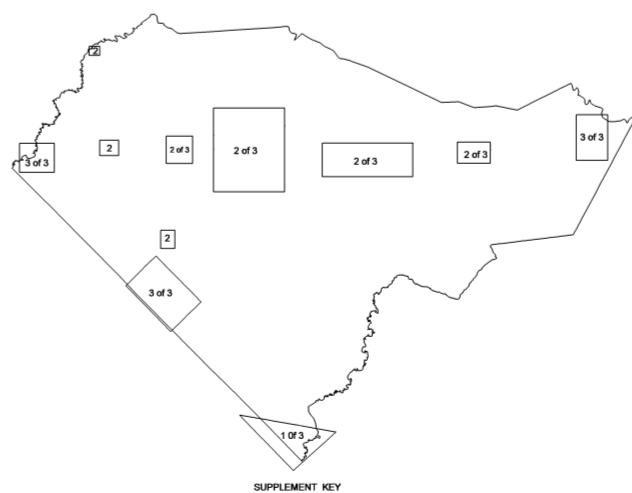
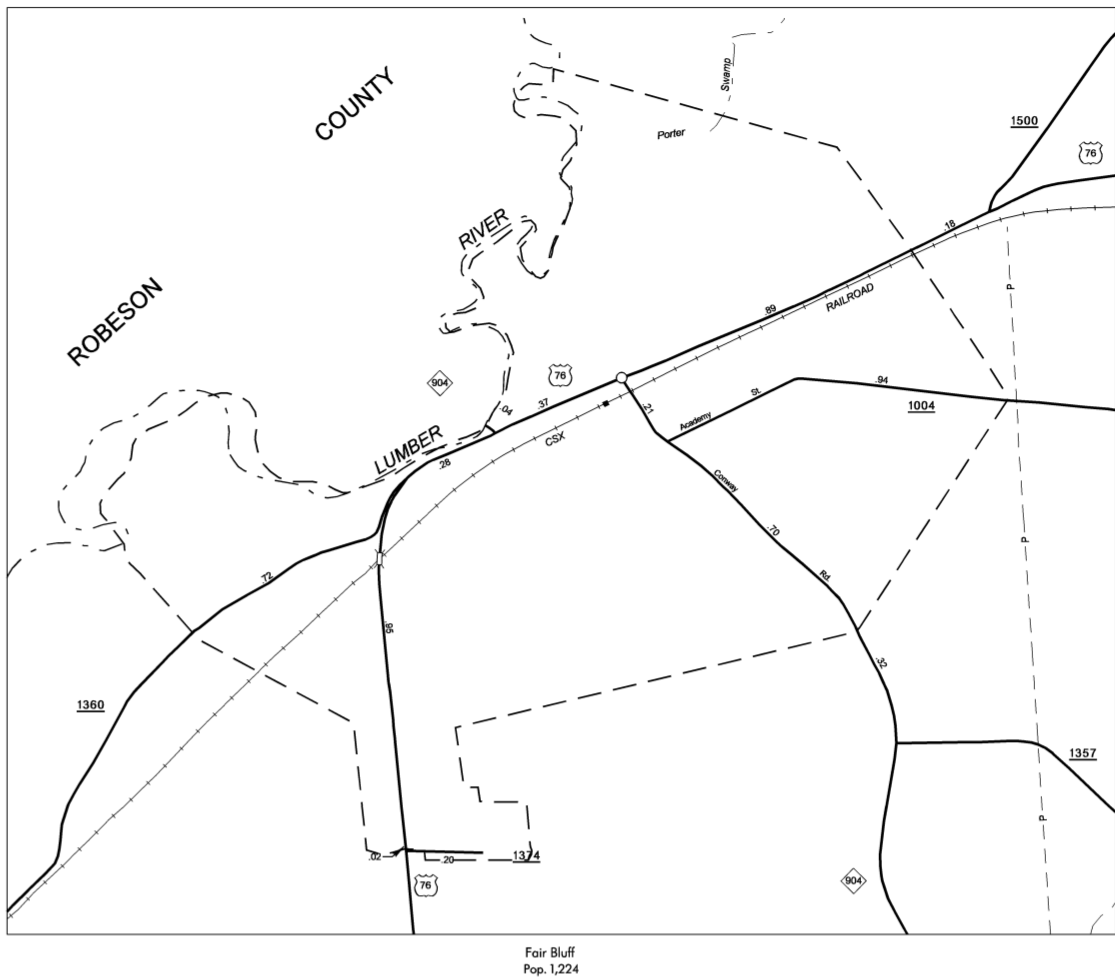
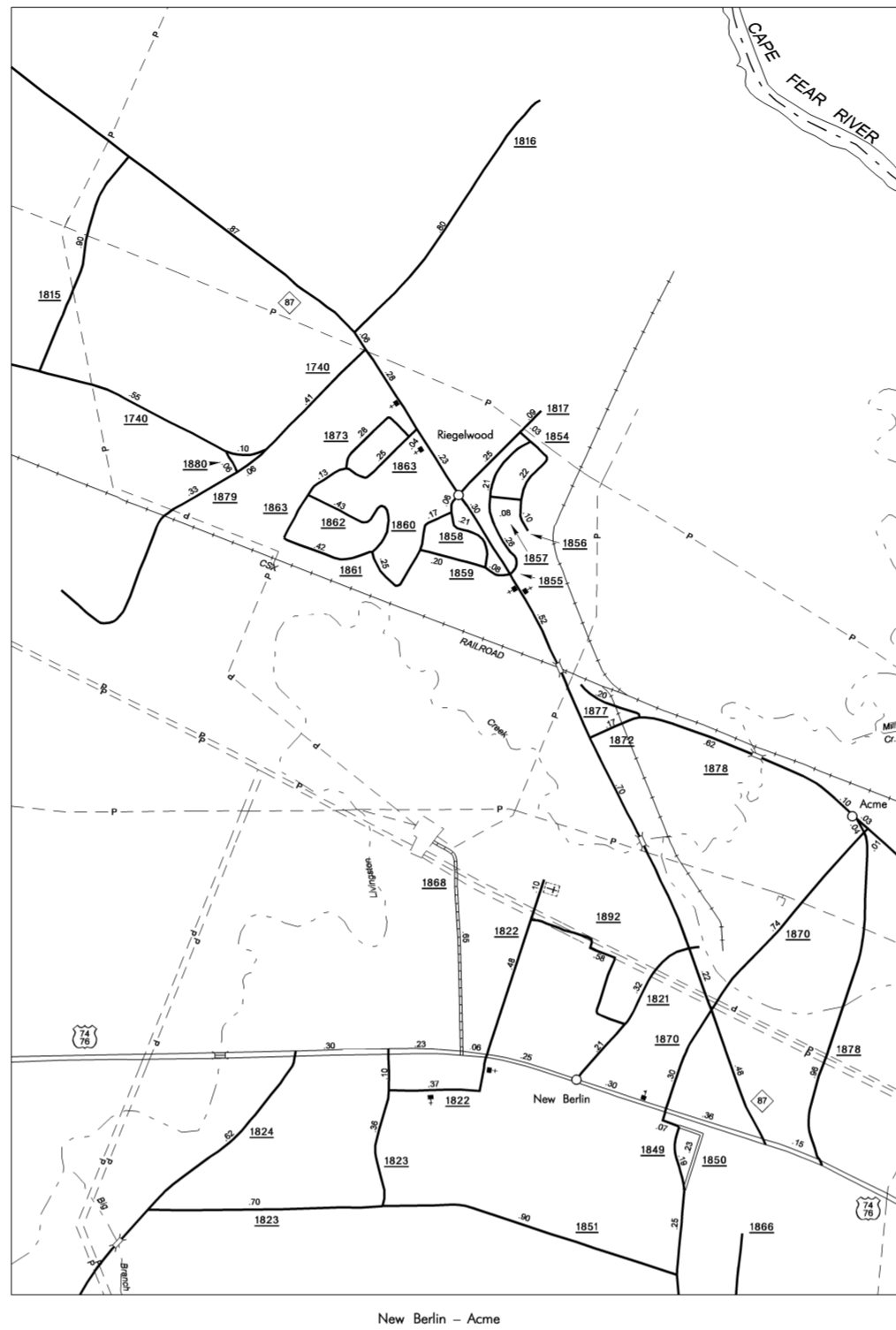
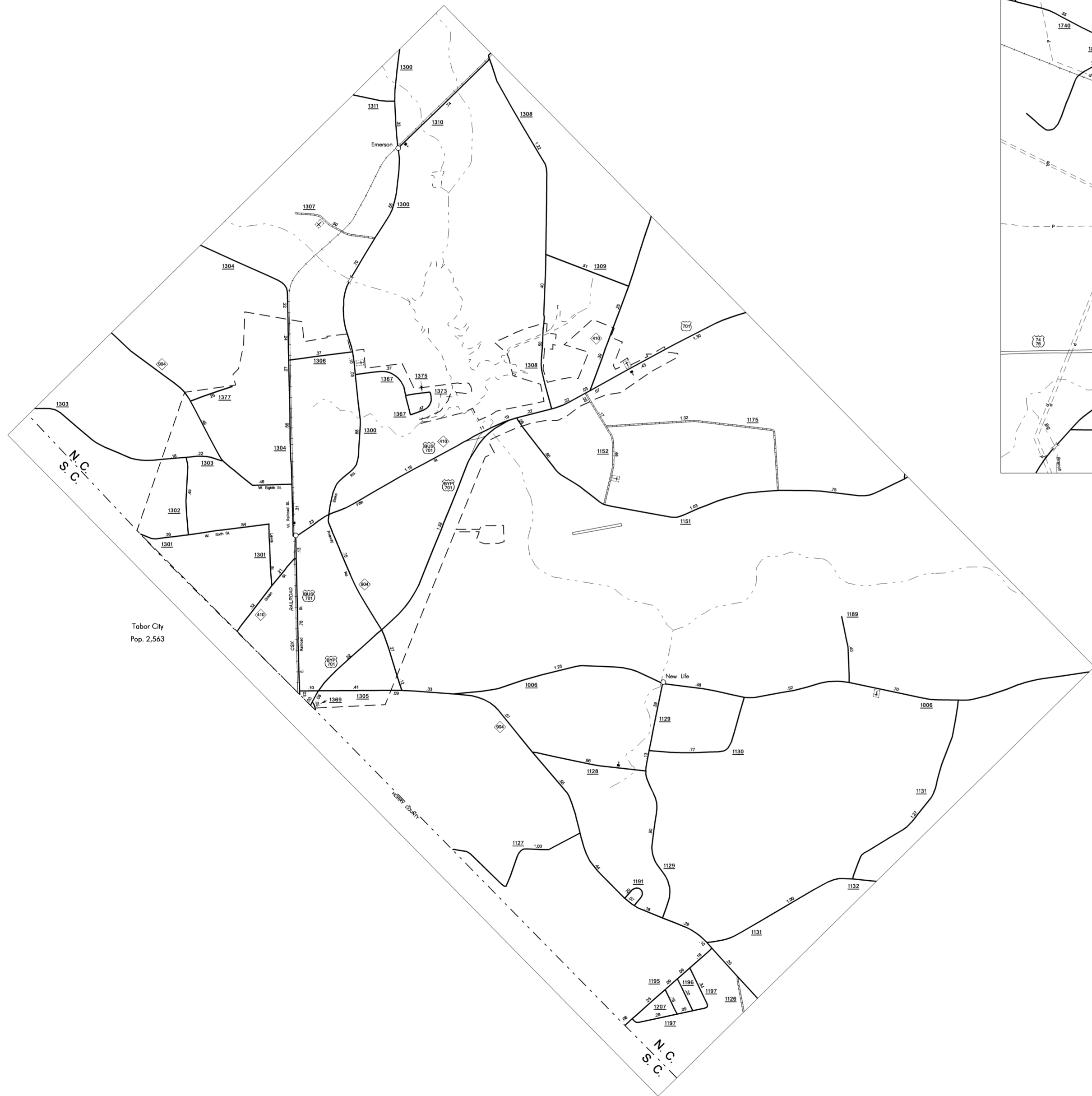


COPIES OF THIS MAP ARE AVAILABLE  
TO THE PUBLIC AT A NOMINAL COST  
ADDRESS:  
N.C. DEPARTMENT OF TRANSPORTATION  
INFORMATION SYSTEMS DIVISION  
3401 CARR SANDBURG CT  
RALEIGH, N.C. 27603

REVISED  
1/26/05 RLK  
6/30/05 MAG  
9/1/06 JMB



ENLARGED MUNICIPAL AND SUBURBAN AREAS  
**COLUMBUS COUNTY**  
NORTH CAROLINA  
PREPARED BY THE  
NORTH CAROLINA DEPARTMENT OF TRANSPORTATION  
INFORMATION TECHNOLOGY - GIS UNIT  
IN COOPERATION WITH THE  
U.S. DEPARTMENT OF TRANSPORTATION  
FEDERAL HIGHWAY ADMINISTRATION

SCALE  
0 1 MILE

10,000 FOOT GRID BASED ON NORTH CAROLINA PLANE COORDINATE SYSTEM  
POLYCONIC PROJECTION