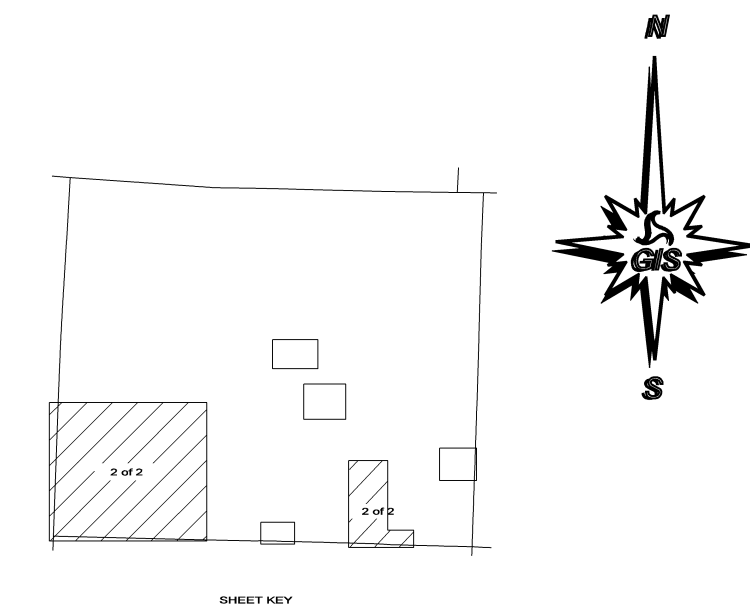
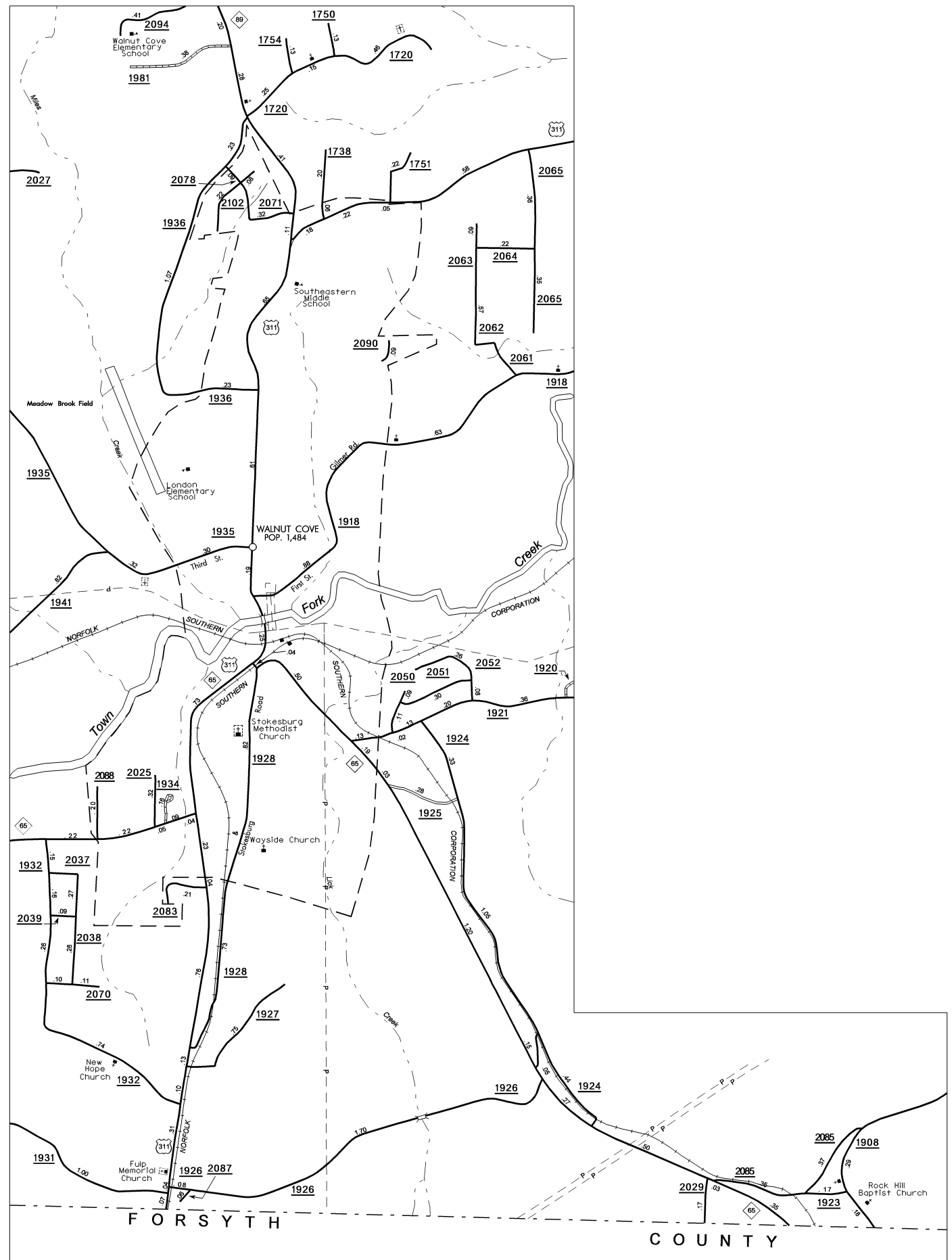


COPIES OF THIS MAP ARE AVAILABLE
TO THE PUBLIC AT A NOMINAL COST
ADDRESS:
N.C. DEPARTMENT OF TRANSPORTATION
SECTION OF INFORMATION SYSTEMS
500 S.W. 10TH AVENUE
RALEIGH, N.C. 27603
REVISED
1/10/00 L.M.
1/2/02 Y.R.T.
6/13/02 Y.R.T.
1/18/02 Y.R.T.
3/20/03 Y.R.T.
8/28/03 Y.R.T.
5/28/04 Y.R.T.
5/31/05 Y.R.T.

SUP. 1

STOKES



ENLARGED MUNICIPAL AND SUBURBAN AREAS

STOKES COUNTY

NORTH CAROLINA

PREPARED BY THE
NORTH CAROLINA DEPARTMENT OF TRANSPORTATION
DIVISION OF HIGHWAYS - GIS UNIT

IN COOPERATION WITH THE
U.S. DEPARTMENT OF TRANSPORTATION
FEDERAL HIGHWAY ADMINISTRATION

SCALE
1 0 1 MILE

10,000 FOOT GRID BASED ON NORTH CAROLINA PLANE COORDINATE SYSTEM
POLYCONIC PROJECTION