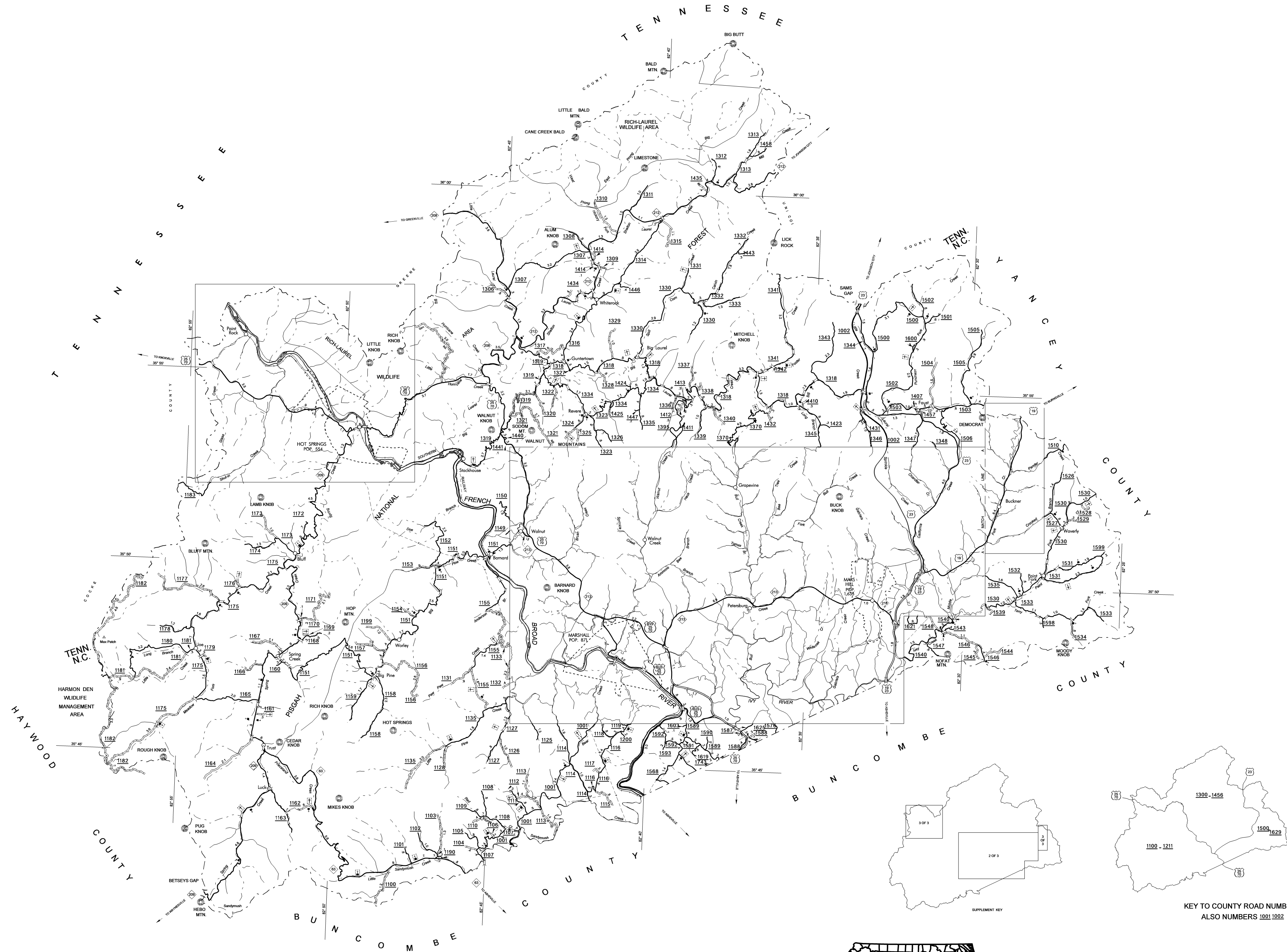


COPY OF THIS MAP ARE AVAILABLE
TO THE PUBLIC AT A NOMINAL COST
ADDRESS:
N.C. DEPARTMENT OF TRANSPORTATION
GIS DATA INFORMATION SYSTEMS
500 S. SHELBY STREET, SUITE 200
RALEIGH, N.C. 27601

REVISED
3/06/02 BOD
5/21/02 BOD
8/23/02 BOD
9/18/02 BOD
1/8/03 BOD
3/31/03 LM
6/10/04 LM
10/15/04 LM

MADISON



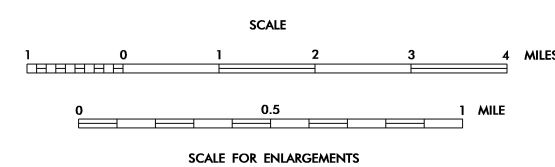
KEY TO COUNTY ROAD NUMBERS
ALSO NUMBERS 1001-1002

NOTE: MAP INCLUDES ONLY STATE MAINTAINED ROADS
OR IMPORTANT NON-SYSTEM ROADS.
ROADS SHOWN AS OF JAN 8, 2003.

MADISON COUNTY

NORTH CAROLINA

PREPARED BY THE
NORTH CAROLINA DEPARTMENT OF TRANSPORTATION
DIVISION OF HIGHWAYS - GIS UNIT
IN COOPERATION WITH THE
U.S. DEPARTMENT OF TRANSPORTATION
FEDERAL HIGHWAY ADMINISTRATION



10,000 FOOT GRID BASED ON NORTH CAROLINA PLANE COORDINATE SYSTEM
POLYCONIC PROJECTION

SHEET 1 OF 3