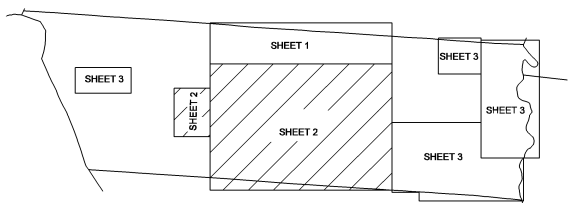
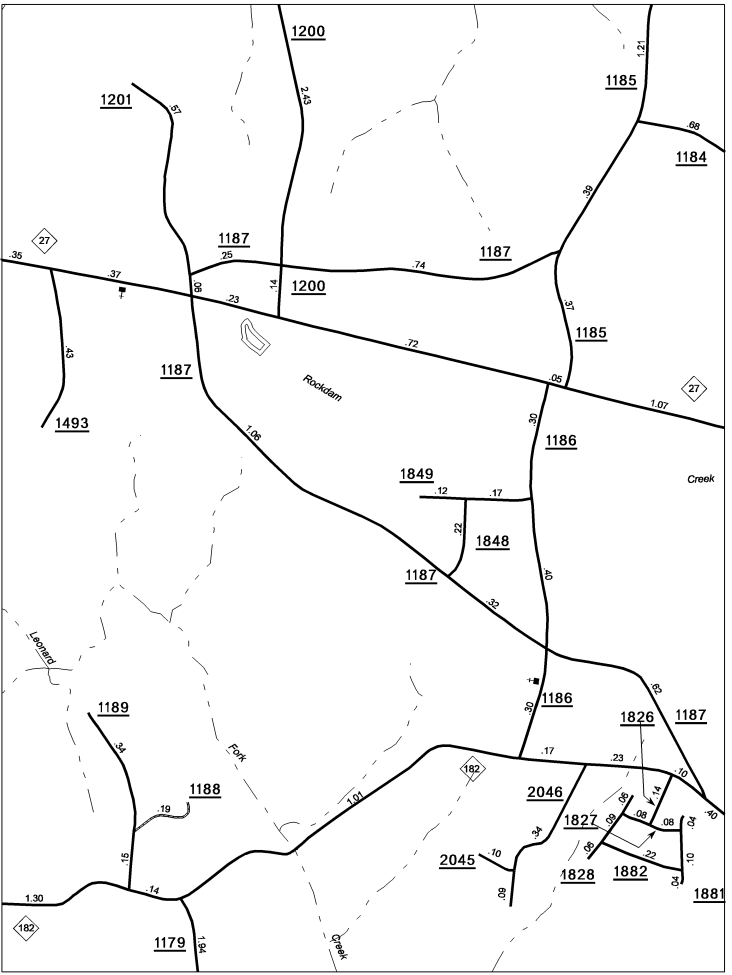
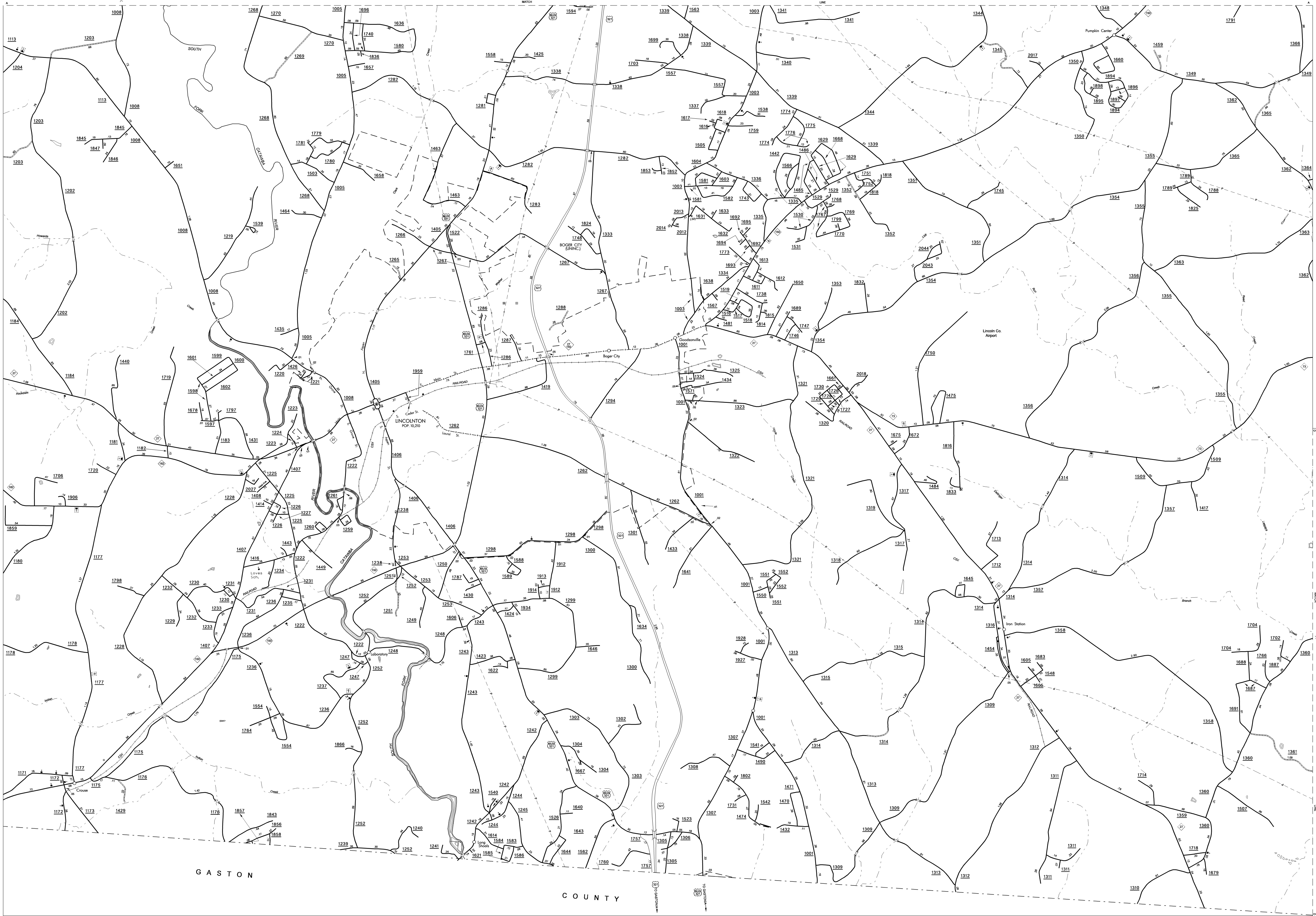


Copies of this map are available  
to the public at a nominal cost.  
ADDRESS:  
N.C. DEPARTMENT OF TRANSPORTATION  
GIS/CARTOGRAPHIC INFORMATION SYSTEMS  
100 SOUTH PARKWAY  
RALEIGH, N.C. 27610

REVISED  
01/02/02 SRC  
10/23/02 SRC  
10/26/02 SRC  
3/11/03 SRC  
12/5/03 SRC  
12/1/04 SRC  
2/5/04 SRC  
3/3/04 SRC  
5/17/04 SRC  
6/10/04 SRC  
7/14/04 SRC  
10/13/04 SRC

SUP. 1

LINCOLN



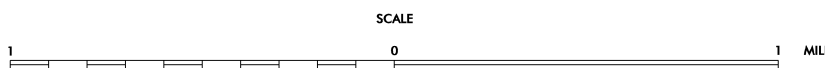
ENLARGED MUNICIPAL AND SUBURBAN AREAS

# LINCOLN COUNTY

## NORTH CAROLINA

PREPARED BY THE  
NORTH CAROLINA DEPARTMENT OF TRANSPORTATION  
DIVISION OF HIGHWAYS - GIS UNIT

IN COOPERATION WITH THE  
U.S. DEPARTMENT OF TRANSPORTATION  
FEDERAL HIGHWAY ADMINISTRATION



POLYCONIC PROJECTION

SHEET 2 OF 3