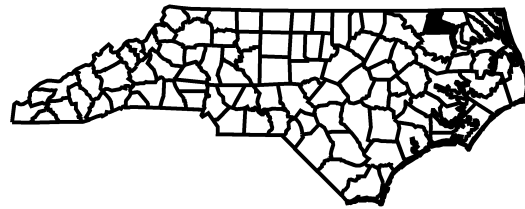
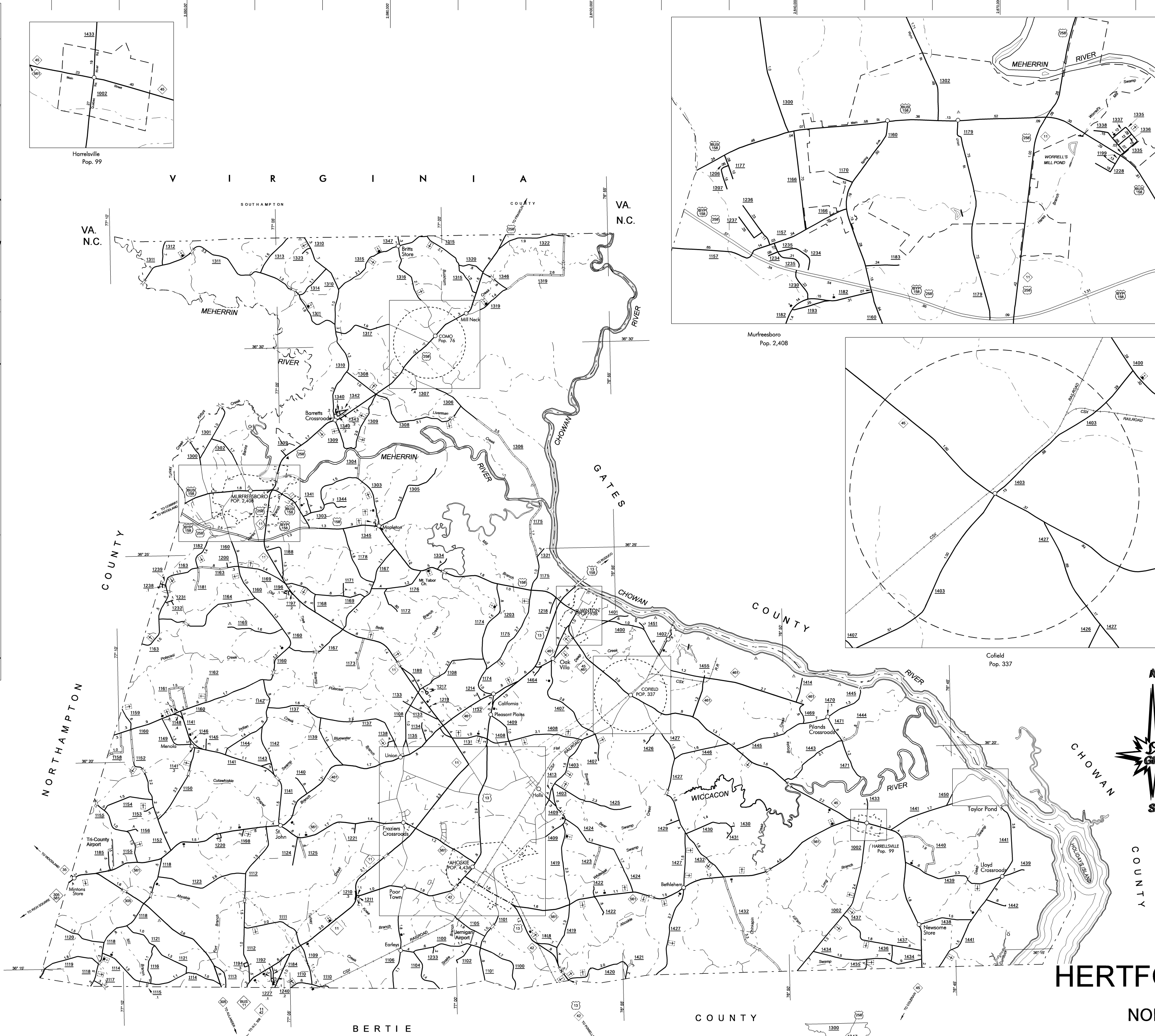
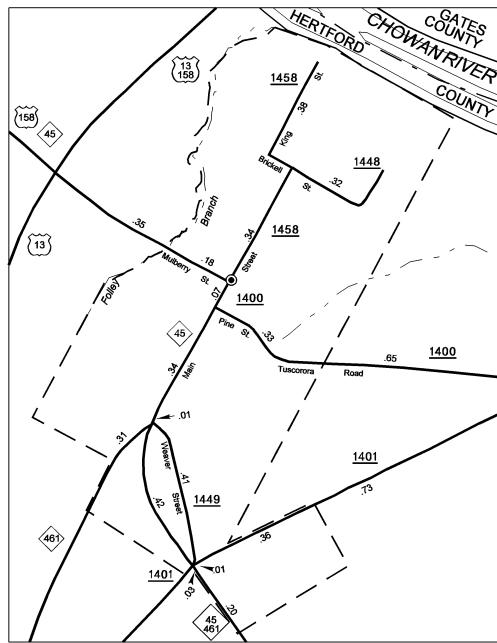
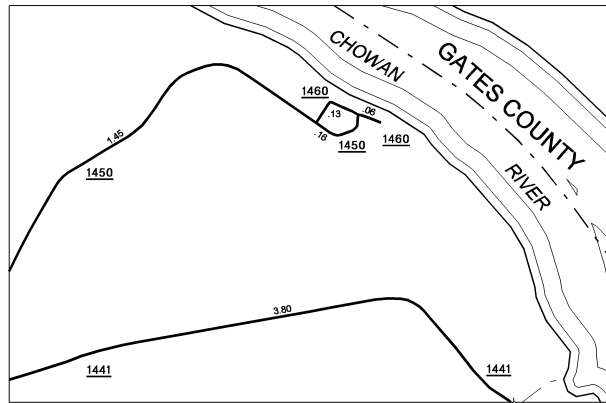
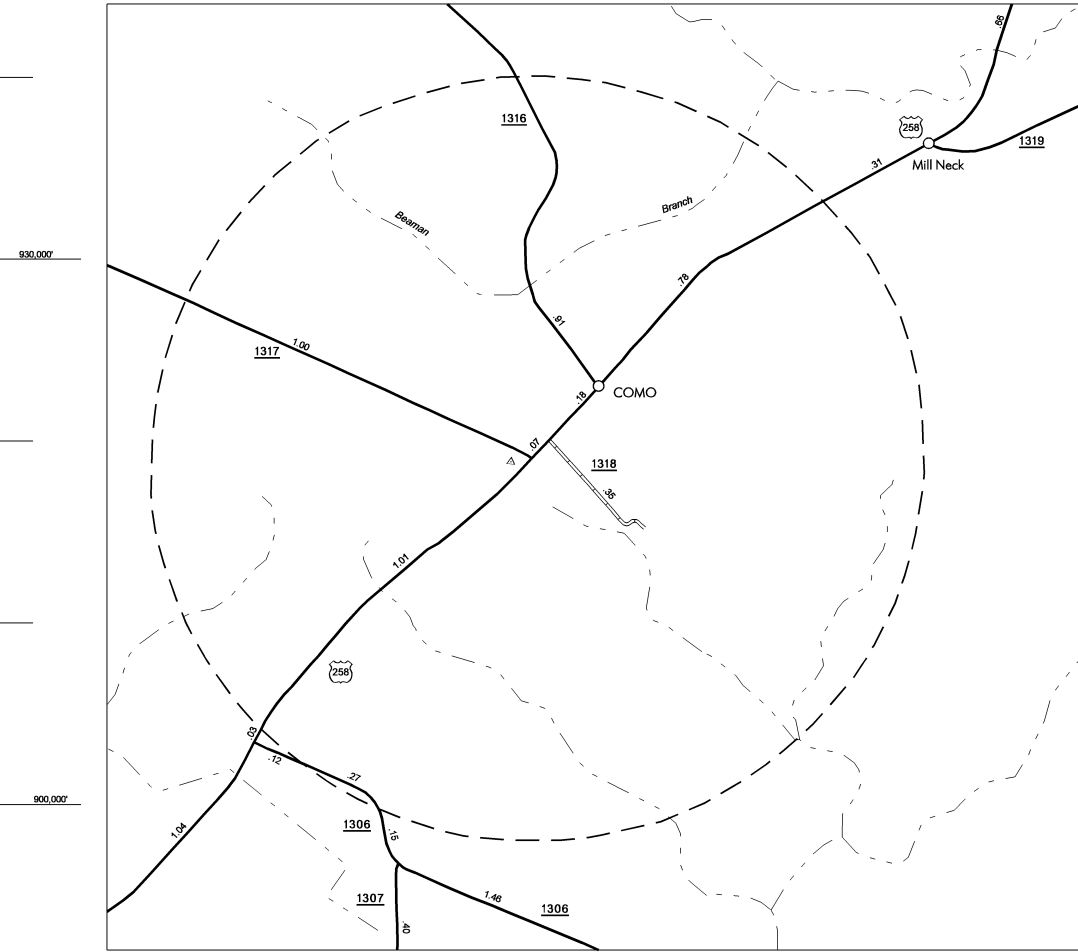
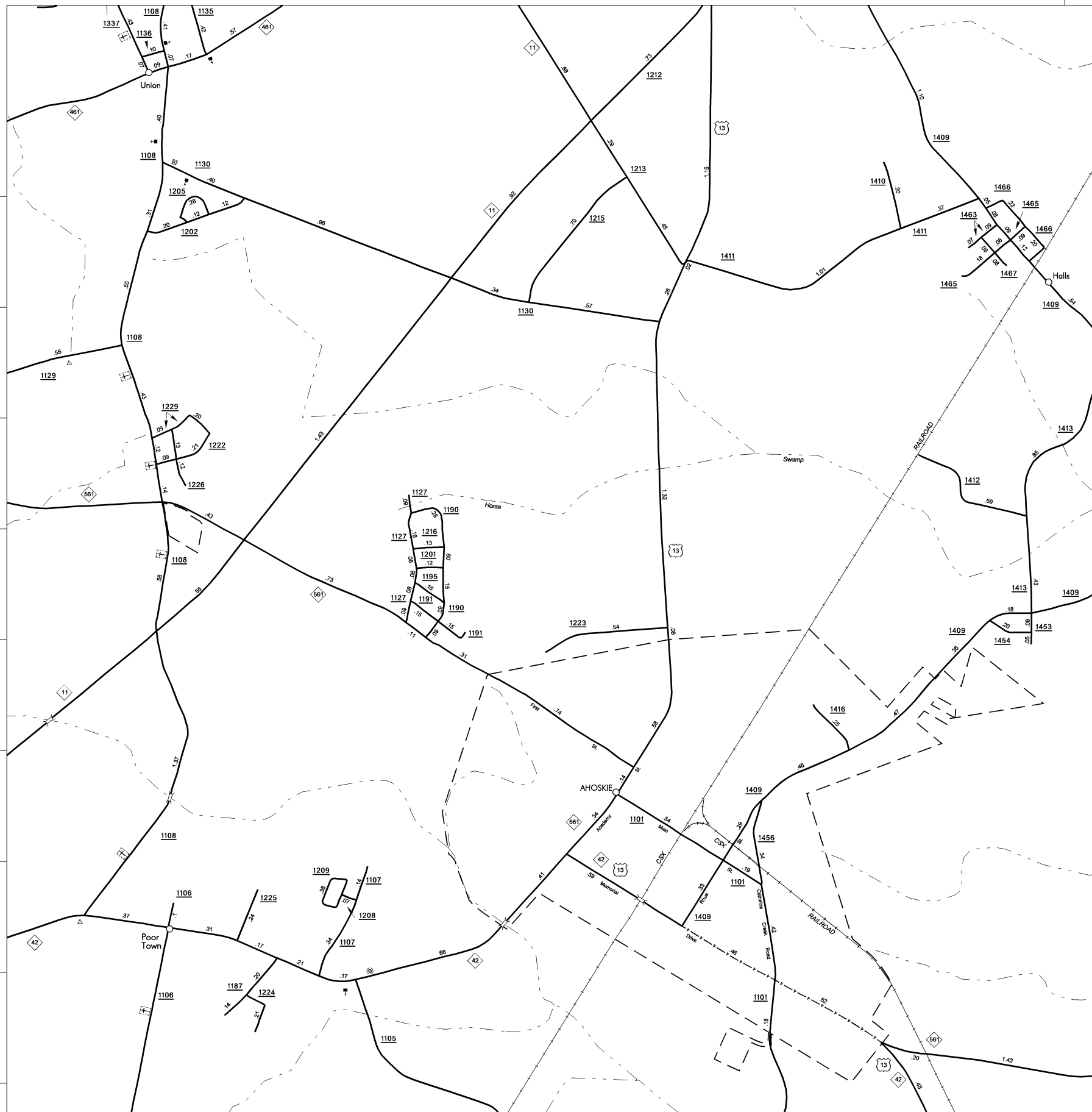


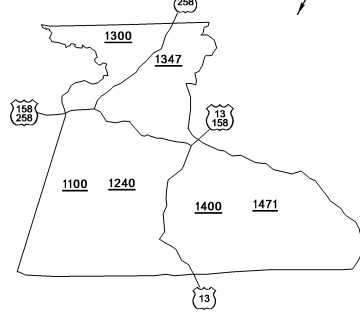
Copies of this map are available
to the public at a nominal cost.
N.C. DEPARTMENT OF TRANSPORTATION
GIS DATA INFORMATION SYSTEMS
RALEIGH, N.C. 27610

REVISION
1/14/02 MSG
3/10/03 MSG
3/17/03 MSG
10/22/03 MSG
4/5/04 MSG
6/30/04 MSG

HERTFORD



NOTE: MAP INCLUDES ONLY STATE MAINTAINED ROADS
OR IMPORTANT NON-SYSTEM ROADS.
ROADS SHOWN AS OF MAR. 17, 2003.



KEY TO COUNTY ROAD NUMBERS
ALSO NUMBER 1002



HERTFORD COUNTY

NORTH CAROLINA

PREPARED BY THE
NORTH CAROLINA DEPARTMENT OF TRANSPORTATION
DIVISION OF HIGHWAYS - GIS UNIT

IN COOPERATION WITH THE
U.S. DEPARTMENT OF TRANSPORTATION
FEDERAL HIGHWAY ADMINISTRATION

SCALE
1 0 1 2 3 4 MILES
0 0.5 1 MILE

SCALE FOR ENLARGEMENTS
10,000 FOOT GRID BASED ON NORTH CAROLINA PLANE COORDINATE SYSTEM
POLYCONIC PROJECTION

SHEET 1 OF 1

DIVISION 1 DISTRICT 2 HERTFORD COUNTY

NORTH CAROLINA