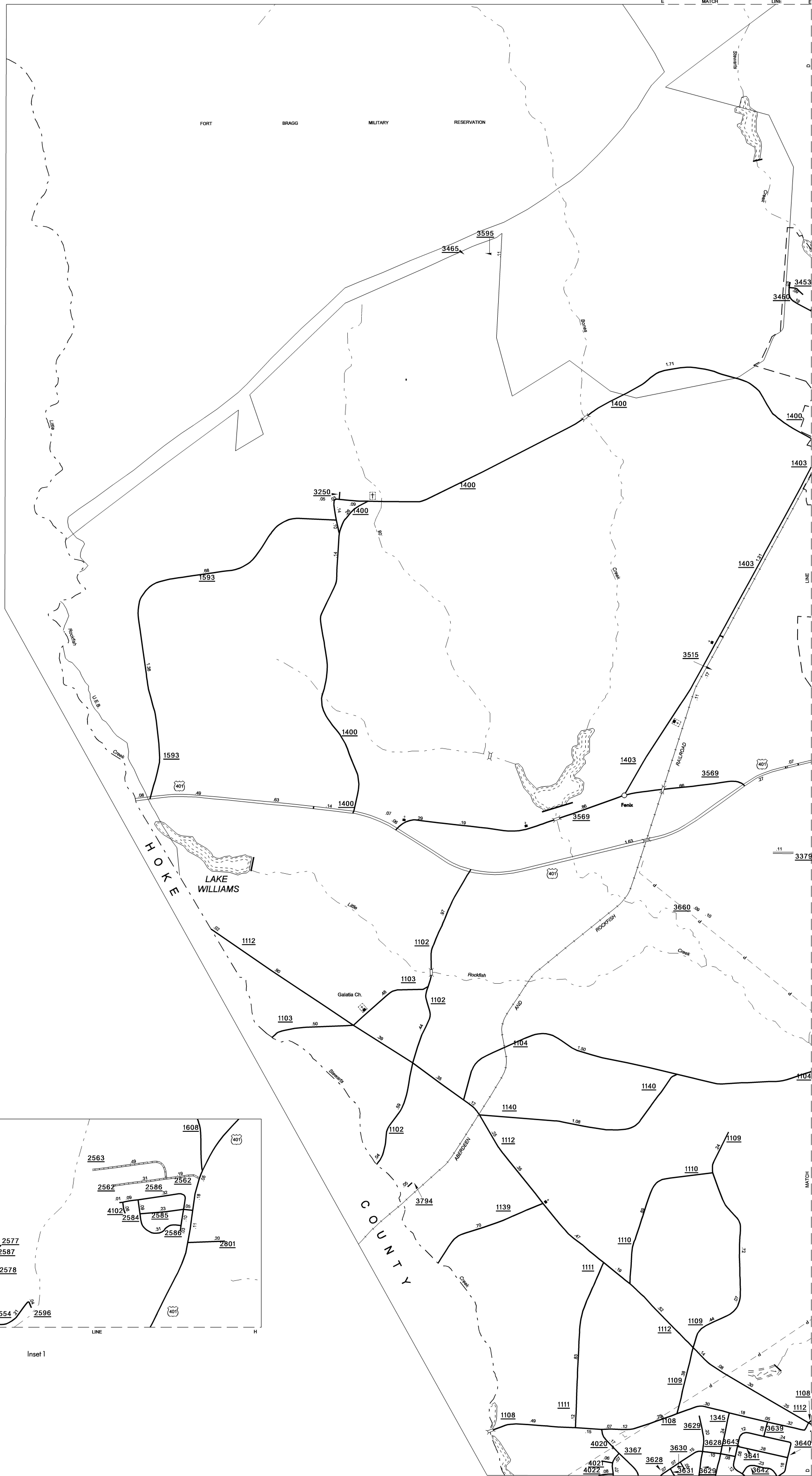
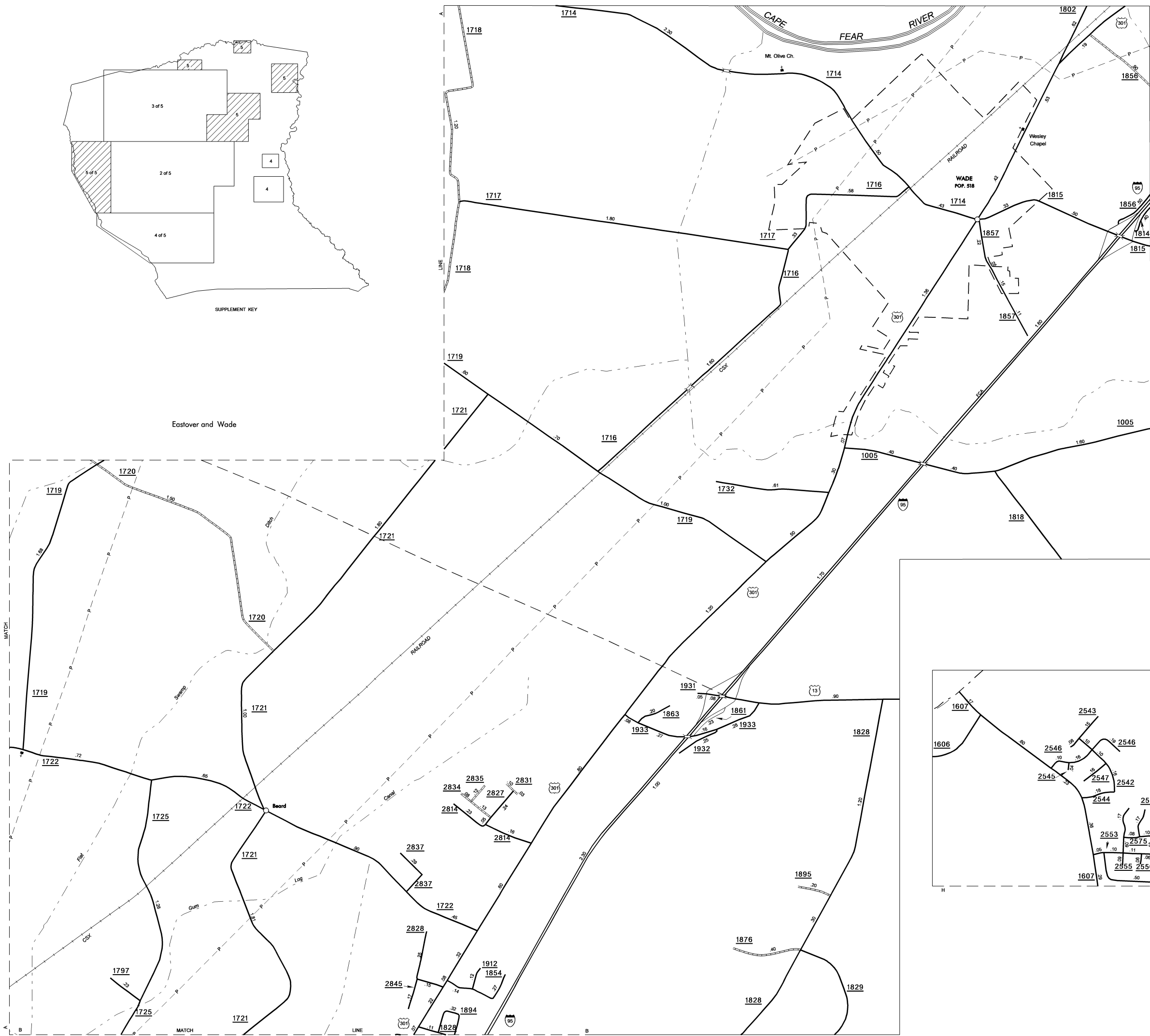


COPIES OF THIS MAP ARE AVAILABLE  
TO THE PUBLIC AT A MINIMAL COST:  
ADDRESS:  
N.C. DEPARTMENT OF TRANSPORTATION  
GEOGRAPHIC INFORMATION SYSTEMS  
DIVISION  
SAULEIGH, N.C. 28150

REVISED
1980/02 BC/S
44/02 BC/S
5/28/02 BC/S
1/29/03 BC/S
8/27/03 PLN
2/5/04 MEM
8/1/05 MAG



ENLARGED MUNICIPAL AND SUBURBAN AREAS

# CUMBERLAND COUNTY

NORTH CAROLINA

PREPARED BY THE  
NORTH CAROLINA DEPARTMENT OF TRANSPORTATION  
DIVISION OF HIGHWAYS - GIS UNIT

IN COOPERATION WITH THE  
U.S. DEPARTMENT OF TRANSPORTATION  
FEDERAL HIGHWAY ADMINISTRATION

SCALE  
0 1 MILE

10,000 FOOT GRID BASED ON NORTH CAROLINA PLANE COORDINATE SYSTEM  
POLYCONIC PROJECTION

SHEET 5 OF 5