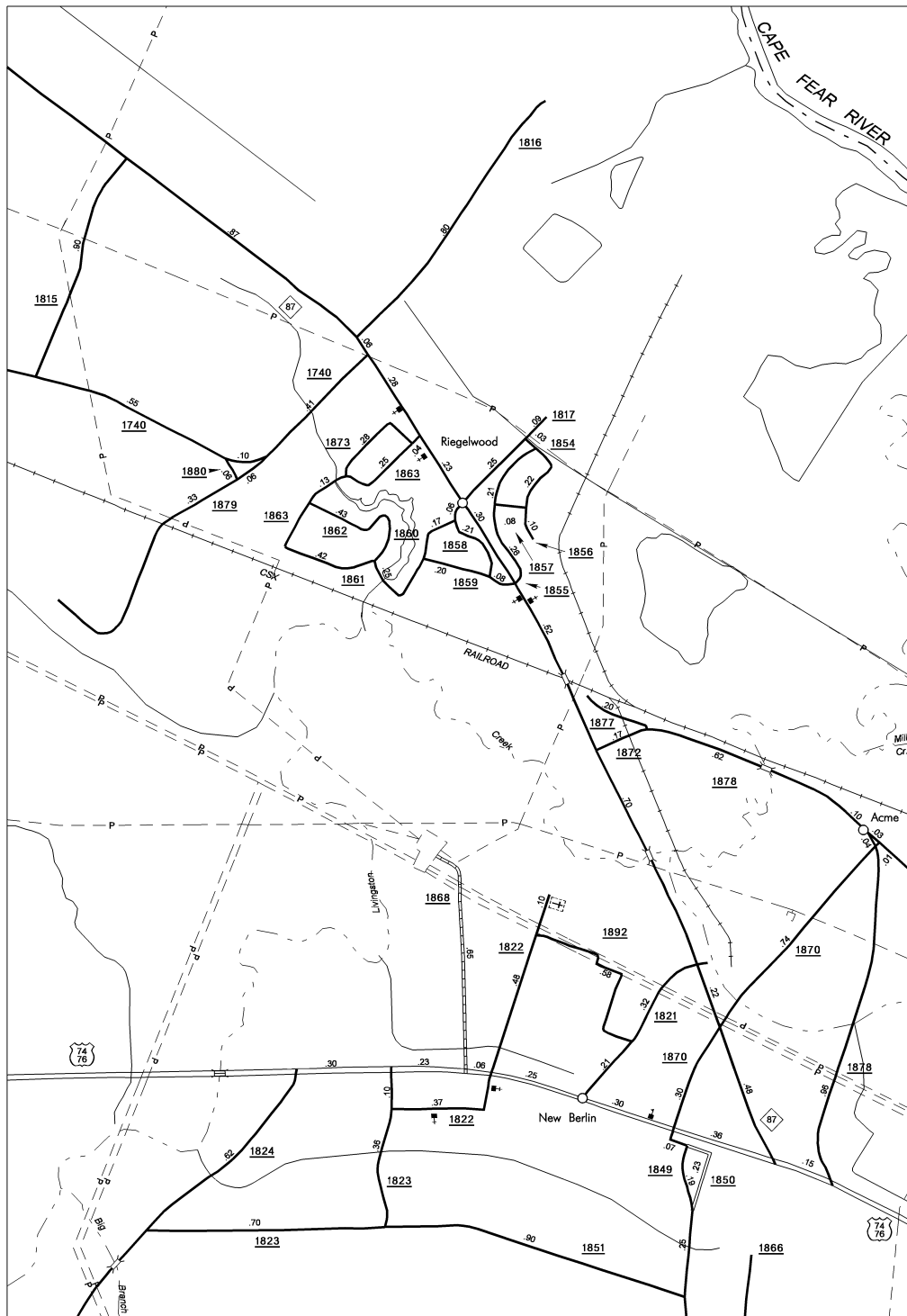


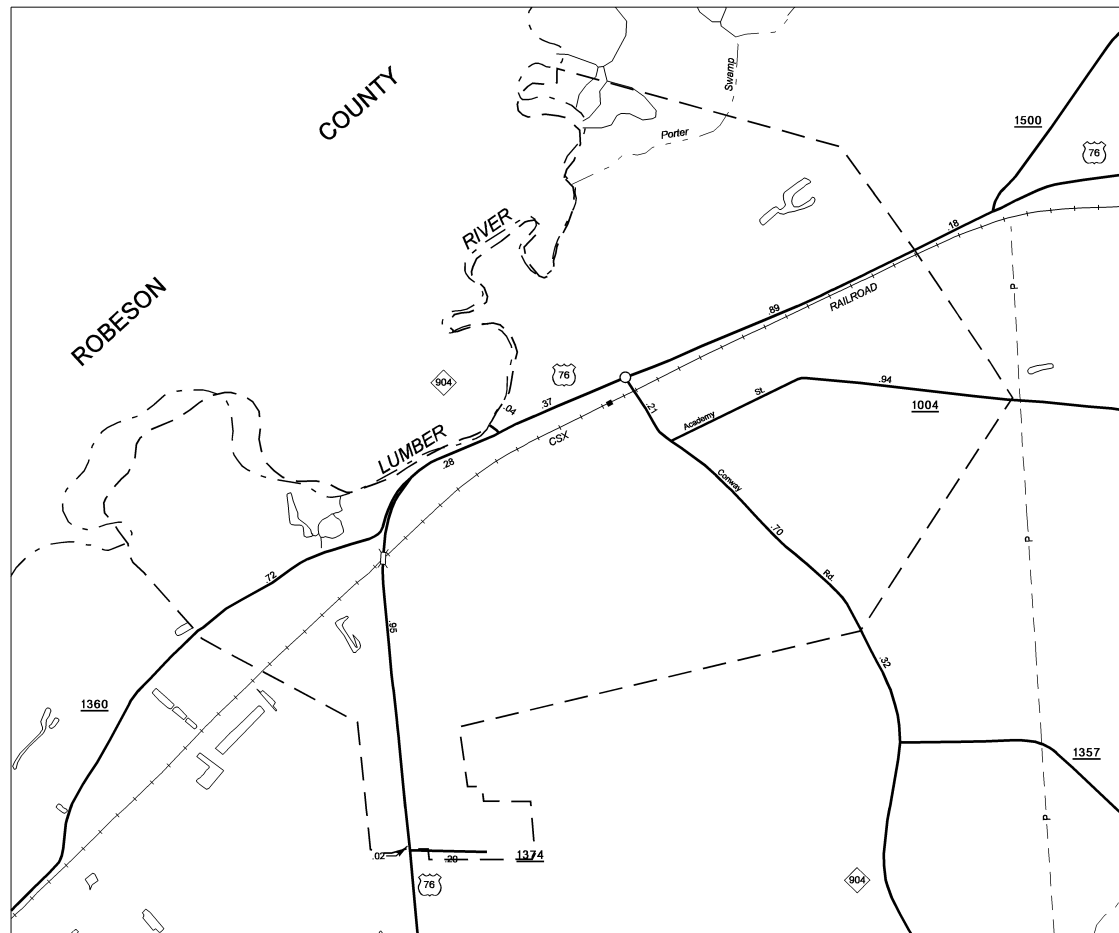
COPY OF THIS MAP ARE AVAILABLE  
TO THE PUBLIC AT A NOMINAL COST  
ADDRESS:  
N.C. DEPARTMENT OF TRANSPORTATION  
SOUTH CAROLINA INFORMATION SYSTEMS  
1000 EAST 4TH STREET  
RALEIGH, N.C. 27610

SUP 2  
COLUMBUS

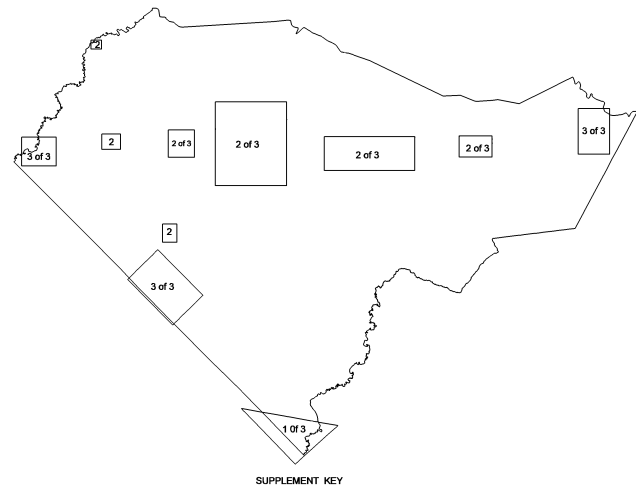
REVISED
1/7/02 BC/S
2/8/02 BC/S
5/28/02 BC/S
10/22/02 BC/S
1/30/03 BC/S
3/11/03 BC/S
1/26/05 PL/N



New Berlin - Acme



Fair Bluff  
Pop. 1,224



SUPPLEMENT KEY



ENLARGED MUNICIPAL AND SUBURBAN AREAS  
**COLUMBUS COUNTY**  
NORTH CAROLINA  
PREPARED BY THE  
NORTH CAROLINA DEPARTMENT OF TRANSPORTATION  
DIVISION OF HIGHWAYS - GIS UNIT  
IN COOPERATION WITH THE  
U.S. DEPARTMENT OF TRANSPORTATION  
FEDERAL HIGHWAY ADMINISTRATION

SCALE  
1 0 1 MILE

10,000 FOOT GRID BASED ON NORTH CAROLINA PLANE COORDINATE SYSTEM  
POLYCONIC PROJECTION