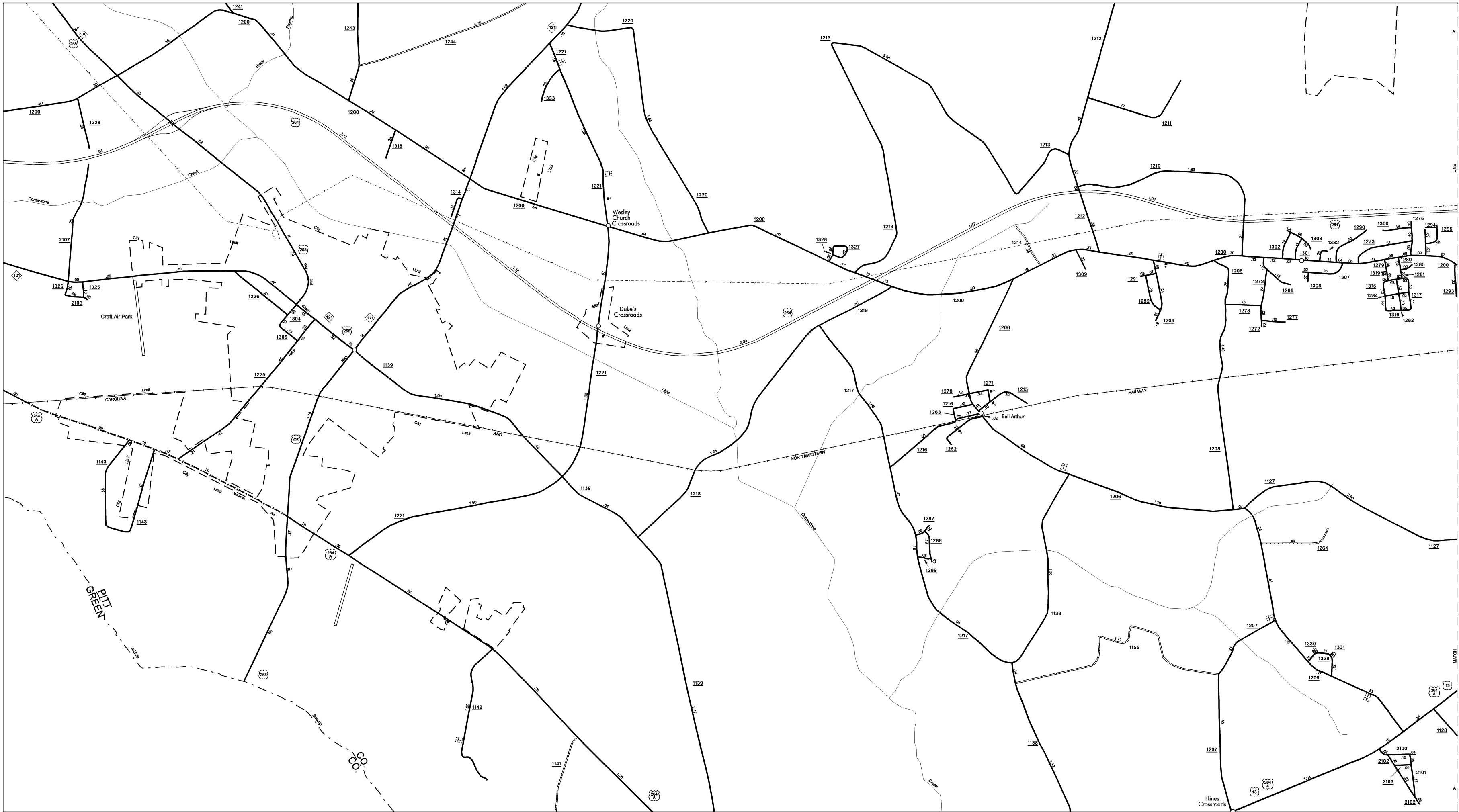


COPIES OF THIS MAP ARE AVAILABLE  
TO THE PUBLIC AT A NOMINAL COST.  
ADDRESS: MAPS, N.C. DEPARTMENT OF TRANSPORTATION  
DIVISION OF HIGHWAYS  
RALEIGH, NORTH CAROLINA 27611

REVISED
12/31/06 DGR
2/12/07 RLN
1/1/08 DGR
6/1/08 DGR
12/1/08
8/1/00 CH
2/15/02 MSG

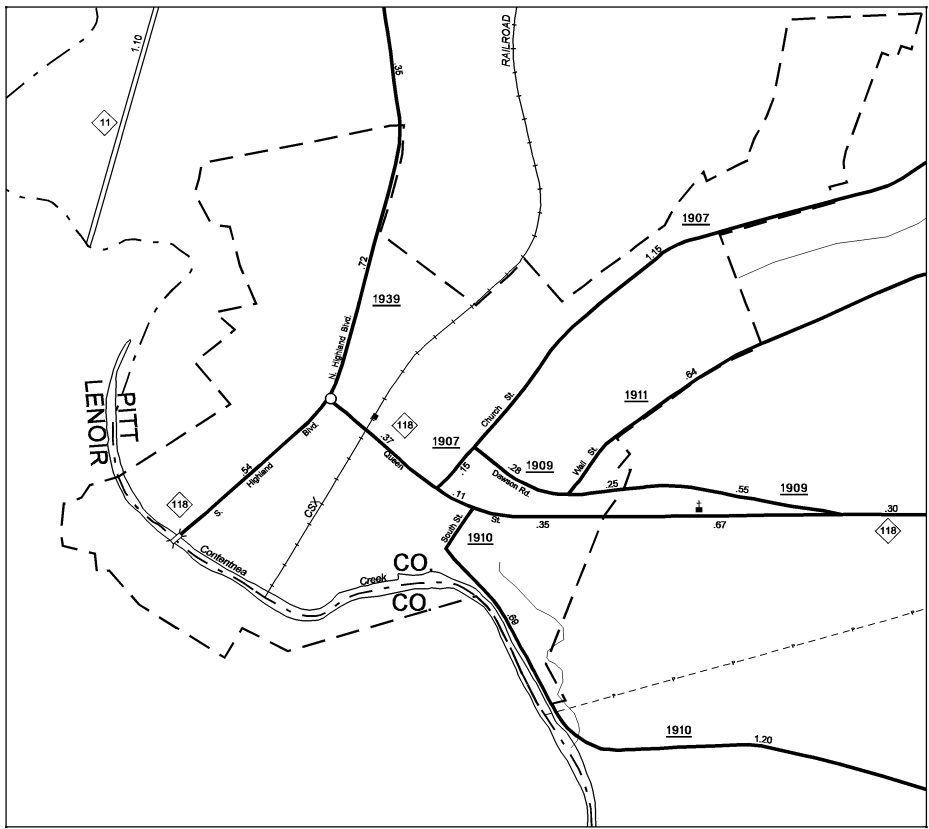
PITT



Farmville  
Pop. 4,398



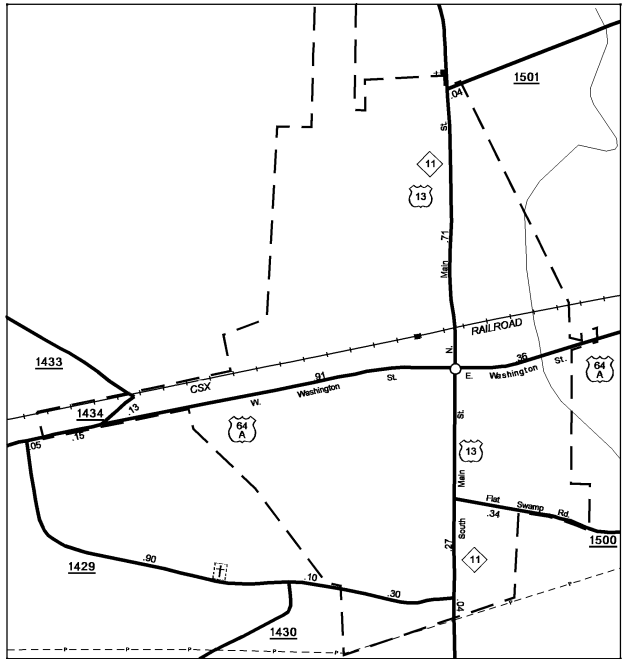
Winterville  
Pop. 3,692



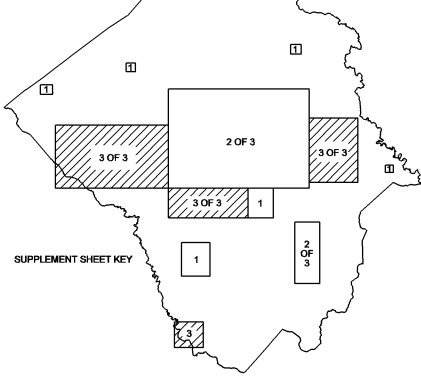
Grifton  
Pop. 2,292



Grimesland  
Pop. 474



Belvoir  
Pop. 1,742



ENLARGED MUNICIPAL AND SUBURBAN AREAS

# PITT COUNTY

## NORTH CAROLINA

PREPARED BY THE  
NORTH CAROLINA DEPARTMENT OF TRANSPORTATION  
DIVISION OF HIGHWAYS - GIS UNIT

IN COOPERATION WITH THE  
U.S. DEPARTMENT OF TRANSPORTATION  
FEDERAL HIGHWAY ADMINISTRATION

