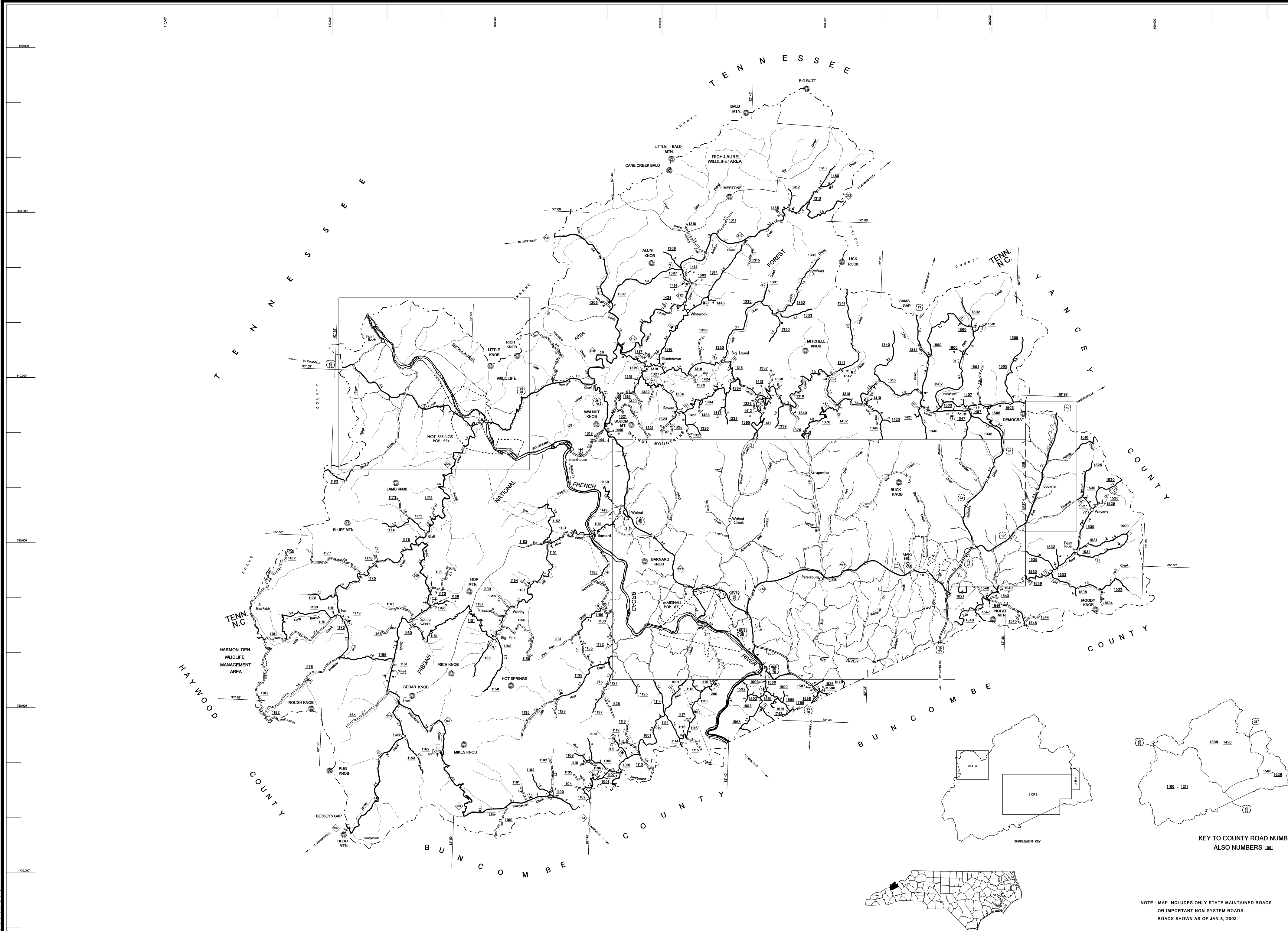


COPIES OF THIS MAP ARE AVAILABLE  
TO THE PUBLIC AT A NOMINAL COST.  
ADDRESS: MAPS, N.C. DEPARTMENT OF TRANSPORTATION  
DIVISION OF HIGHWAYS  
RALEIGH, NORTH CAROLINA 27611

REVISED  
5/28/96 JSJ  
12/22/97 JMB  
3/1/99 JMB  
10/15/99 JMB  
3/26/02 BGG  
5/21/02 BGG  
8/23/02 BGG  
9/18/03 BGG  
1/8/03 BGG  
3/31/03 LM



NOTE: MAP INCLUDES ONLY STATE MAINTAINED ROADS  
OR IMPORTANT NON-SYSTEM ROADS.  
ROADS SHOWN AS OF JAN. 8, 2003.

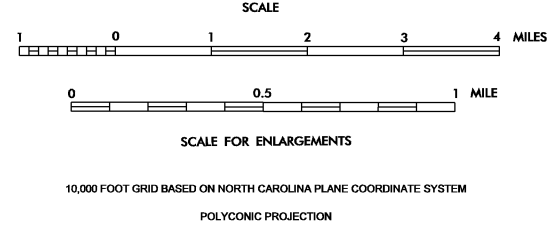
KEY TO COUNTY ROAD NUMBERS  
ALSO NUMBERS 1001

# MADISON COUNTY

## NORTH CAROLINA

PREPARED BY THE  
NORTH CAROLINA DEPARTMENT OF TRANSPORTATION  
DIVISION OF HIGHWAYS - GIS UNIT

IN COOPERATION WITH THE  
U.S. DEPARTMENT OF TRANSPORTATION  
FEDERAL HIGHWAY ADMINISTRATION



- ### LEGEND
- PRIMITIVE OR UNIMPROVED ROAD
  - GRADED AND DRAINED ROAD
  - SOIL, GRAVEL OR STONE SURFACED ROAD
  - HARD SURFACED ROAD
  - 4 LANE UNDIVIDED HIGHWAY
  - DIVIDED HIGHWAY
  - HIGHWAY WITH FRONTAGE ROADS
  - FCA FULL CONTROL ACCESS
  - NS NON-SYSTEM ROAD
  - PROJECTED LOCATION
  - INTERSECTION DISTANCE
  - TRAFFIC CIRCLE
  - HIGHWAY INTERCHANGE
  - DETAILED HIGHWAY INTERCHANGE
  - ROAD THROUGH MOUNTAIN PASS
  - HIGHWAY BRIDGE
  - UNDERPASS
  - OVERPASS
  - DRAW SPAN ON BRIDGE
  - HIGHWAY TUNNEL
  - FORD
  - INTERSTATE HIGHWAY
  - U.S. NUMBERED HIGHWAY
  - N.C. NUMBERED HIGHWAY
  - U.S. NUMBERED BICYCLE ROUTE
  - N.C. NUMBERED BICYCLE ROUTE
  - INTERSTATE INTERCHANGE NUMBER
  - SECONDARY ROAD NUMBER
  - CABLE
  - RAILROAD, ANY NUMBER OF TRACKS
  - USED BY SINGLE OPERATING COMPANY
  - RAILROAD ANY NUMBER OF TRACKS
  - USED BY MORE THAN ONE OPERATION
  - COMPANY OR SAME OR ADJACENT
  - RIGHTS-OF-WAY
  - RAILROAD STATION
  - GRADE CROSSING
  - UNDERPASS
  - OVERPASS
  - RAILROAD TUNNEL
  - INSET AREA
  - URBAN EXTENSION
  - BOUNDARY LINE
  - RESERVATION OR PARK BOUNDARY
  - CITY LIMIT
  - NATIONAL FOREST BOUNDARY
  - STATE FOREST BOUNDARY
  - FEDERAL GAZETTE BOUNDARY
  - STATE GAZETTE BOUNDARY
  - MILITARY RESERVATION BOUNDARY
  - COUNTY LINE
  - STATE LINE
  - INCORPORATED CITY OR VILLAGE, (GENERALIZED)
  - FREE OR TOLL FERRY
  - CANAL
  - NARROW STREAM
  - WIDE STREAM
  - DAM WITH LOCK
  - DAM
  - RESERVOIR, POND, OR LAKE
  - COMMUNITY AND TOWN CENTER
  - COUNTY SEAT
  - SCHOOL
  - COLLEGE OR UNIVERSITY
  - HOSPITAL
  - CHURCH
  - CHURCH WITH CEMETERY
  - CEMETERY
  - PATROL STATION
  - CORRECTIONAL OR PENAL INSTN.
  - HIGHWAY GARAGE OR MAINT. YARD
  - HIGHWAY DRY OR DIST. OFFICE
  - WEIGHT STATION
  - MONUMENT-SMALL HISTORICAL SITE
  - LIGHTHOUSE
  - MOUNTAIN PEAK
  - REST AREA
  - TRIANGULATION STATION
  - COAST GUARD STATION
  - MILITARY AIRFIELD
  - COMMERCIAL OR MUNICIPAL FIELD
  - HANGAR ON FIELD
  - LANDING STRIP
  - MARKED AUXILIARY FIELD

