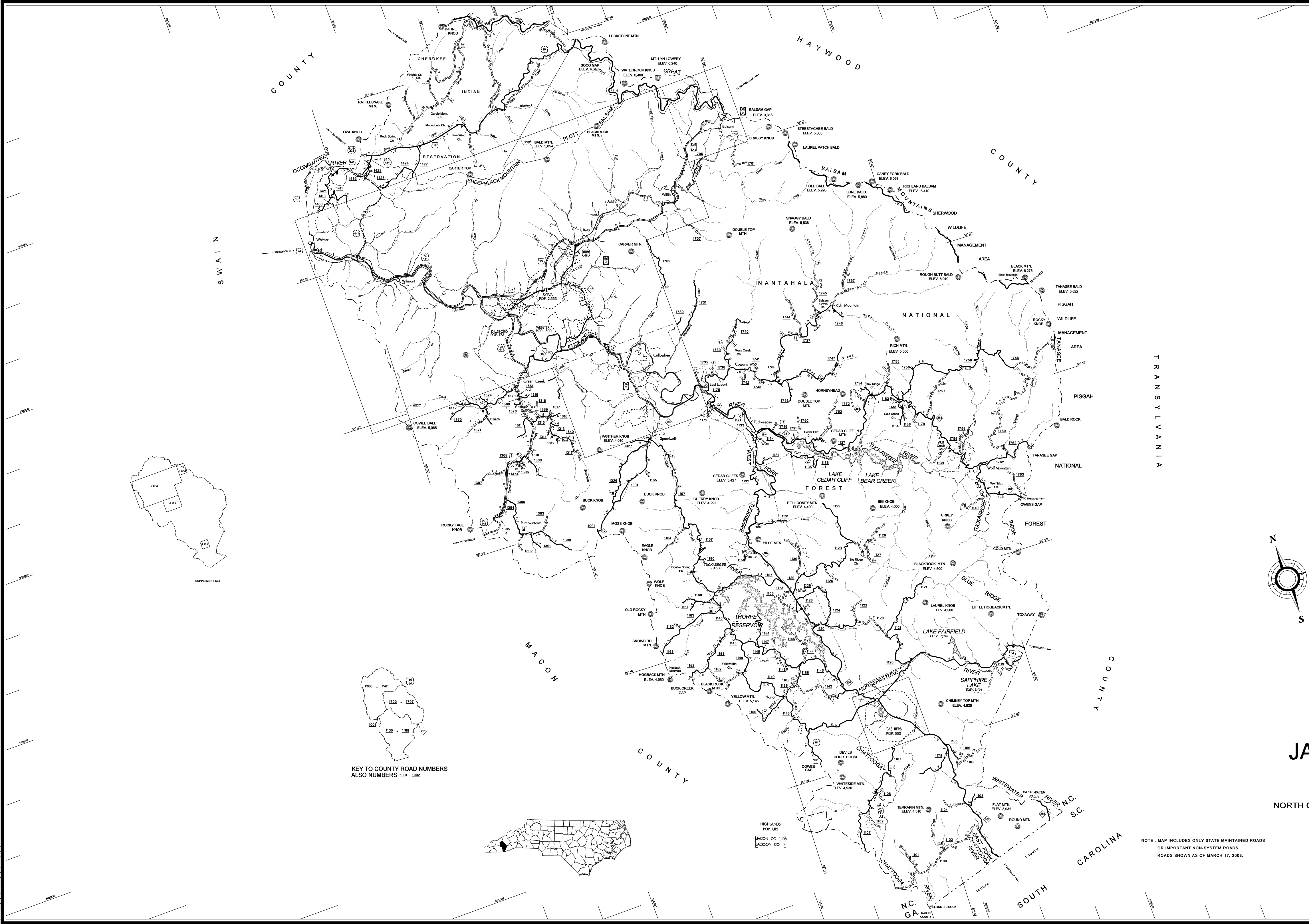


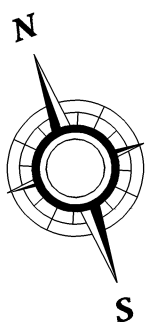
COPIES OF THIS MAP ARE AVAILABLE
TO THE PUBLIC AT A NOMINAL COST.
ADDRESS: MAPS, N.C. DEPARTMENT OF TRANSPORTATION
DIVISION OF HIGHWAYS
RALEIGH, NORTH CAROLINA 27611

REVISIONS

11/1/96	RUN
1/2/99	JMB
1/2/99	JMB
3/15/99	JMB
9/30/99	JMB
5/23/02	BDG
1/8/03	BDG
3/17/03	BDG



- LEGEND**
- PRIMITIVE OR UNIMPROVED ROAD
 - GRADED AND DRAINED ROAD
 - SOIL GRAVEL OR STONE SURFACED ROAD
 - HARD SURFACED ROAD
 - 4 LANE UNDIVIDED HIGHWAY
 - DIVIDED HIGHWAY
 - HIGHWAY WITH FRONTAGE ROADS
 - FULL CONTROL ACCESS
 - NON-SYSTEM ROAD
 - PROJECTED LOCATION
 - INTERSECTION DISTANCE
 - TRAFFIC CIRCLE
 - HIGHWAY INTERCHANGE
 - DETAILED HIGHWAY INTERCHANGE
 - ROAD THROUGH MOUNTAIN PASS
 - HIGHWAY BRIDGE
 - UNDERPASS
 - OVERPASS
 - DRAW SPAN ON BRIDGE
 - HIGHWAY TUNNEL
 - FORD
 - INTERSTATE HIGHWAY
 - U.S. NUMBERED HIGHWAY
 - N.C. NUMBERED HIGHWAY
 - U.S. NUMBERED BICYCLE ROUTE
 - N.C. NUMBERED BICYCLE ROUTE
 - INTERSTATE INTERCHANGE NUMBER
 - SECONDARY ROAD NUMBER
 - CABLE
 - RAILROAD, ANY NUMBER OF TRACKS
USED BY SINGLE OPERATING COMPANY
 - RAILROAD, ANY NUMBER OF TRACKS
USED BY MORE THAN ONE OPERATING
COMPANY ON SAME OR ADJACENT
RIGHTS-OF-WAY
 - RAILROAD STATION
 - GRADE CROSSING
 - UNDERPASS
 - OVERPASS
 - RAILROAD TUNNEL
 - INSET AREA
 - URBAN EXTENSION
 - BOUNDARY LINE
 - RESERVATION OR
PARK BOUNDARY
 - CITY LIMIT
 - NATIONAL FOREST BOUNDARY
 - STATE FOREST BOUNDARY
 - FEDERAL GAMEDLAND BOUNDARY
 - STATE GAMEDLAND BOUNDARY
 - MILITARY RESERVATION BOUNDARY
 - COUNTY LINE
 - STATE LINE
 - INCORPORATED CITY OR VILLAGE,
(GENERALIZED)
 - FREE OR TOLL FERRY
 - CANAL
 - NARROW STREAM
 - WIDE STREAM
 - DAM WITH LOCK
 - DAM
 - RESERVOIR, POND, OR LAKE
 - COMMUNITY AND TOWN CENTER
 - COUNTY SEAT
 - SCHOOL
 - COLLEGE OR UNIVERSITY
 - HOSPITAL
 - CHURCH
 - CHURCH WITH CEMETERY
 - CEMETERY
 - PATROL STATION
 - CORRECTIONAL OR PENAL INSTN.
 - HIGHWAY GARAGE OR MAINT. YARD
 - HIGHWAY DIV. OR DIST. OFFICE
 - WEIGHT STATION
 - MONUMENT-SMALL HISTORICAL SITE
 - LIGHTHOUSE
 - MOUNTAIN PEAK
 - REST AREA
 - TRIANGULATION STATION
 - COAST GUARD STATION
 - MILITARY AIRFIELD
 - COMMERCIAL OR MUNICIPAL FIELD
 - HANGAR ON FIELD
 - LANDING STRIP
 - MARKED AUXILIARY FIELD



JACKSON COUNTY

NORTH CAROLINA

PREPARED BY THE
NORTH CAROLINA DEPARTMENT OF TRANSPORTATION
DIVISION OF HIGHWAYS - GIS UNIT
IN COOPERATION WITH THE
U.S. DEPARTMENT OF TRANSPORTATION
FEDERAL HIGHWAY ADMINISTRATION

NOTE: MAP INCLUDES ONLY STATE MAINTAINED ROADS
OR IMPORTANT NON-SYSTEM ROADS.
ROADS SHOWN AS OF MARCH 17, 2003.

