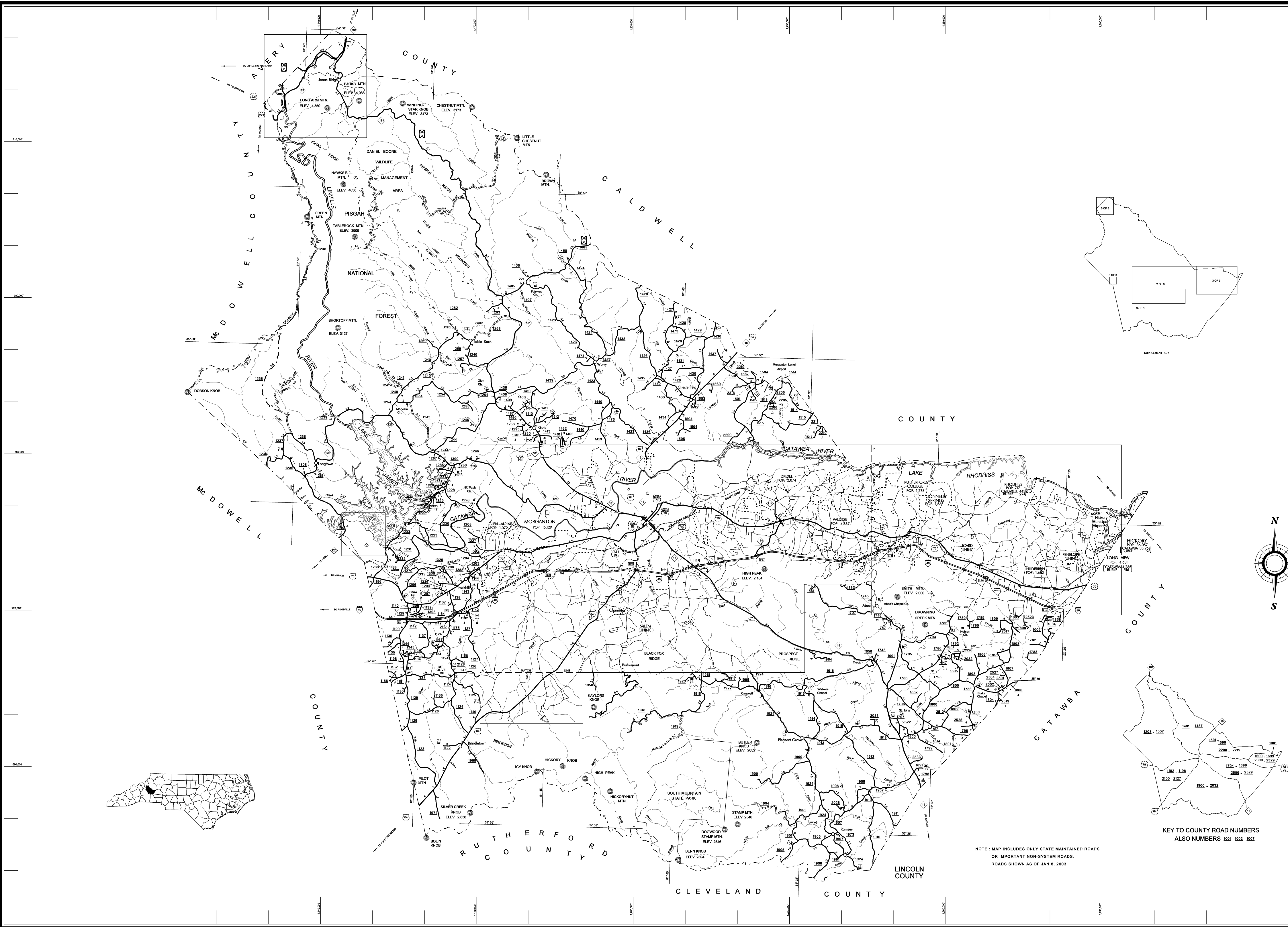


COPIES OF THIS MAP ARE AVAILABLE
TO THE PUBLIC AT A NOMINAL COST.
ADDRESS: MAPS, N.C. DEPARTMENT OF TRANSPORTATION
DIVISION OF HIGHWAYS
RALEIGH, NORTH CAROLINA 27611

REVISED
3/27/02 BDO
5/21/02 BDO
8/23/03 BDO
1/8/05 BDO
3/11/05 LM
3/31/05 LM



BURKE COUNTY

NORTH CAROLINA

PREPARED BY THE
NORTH CAROLINA DEPARTMENT OF TRANSPORTATION
DIVISION OF HIGHWAYS - GIS UNIT

IN COOPERATION WITH THE
U.S. DEPARTMENT OF TRANSPORTATION
FEDERAL HIGHWAY ADMINISTRATION

