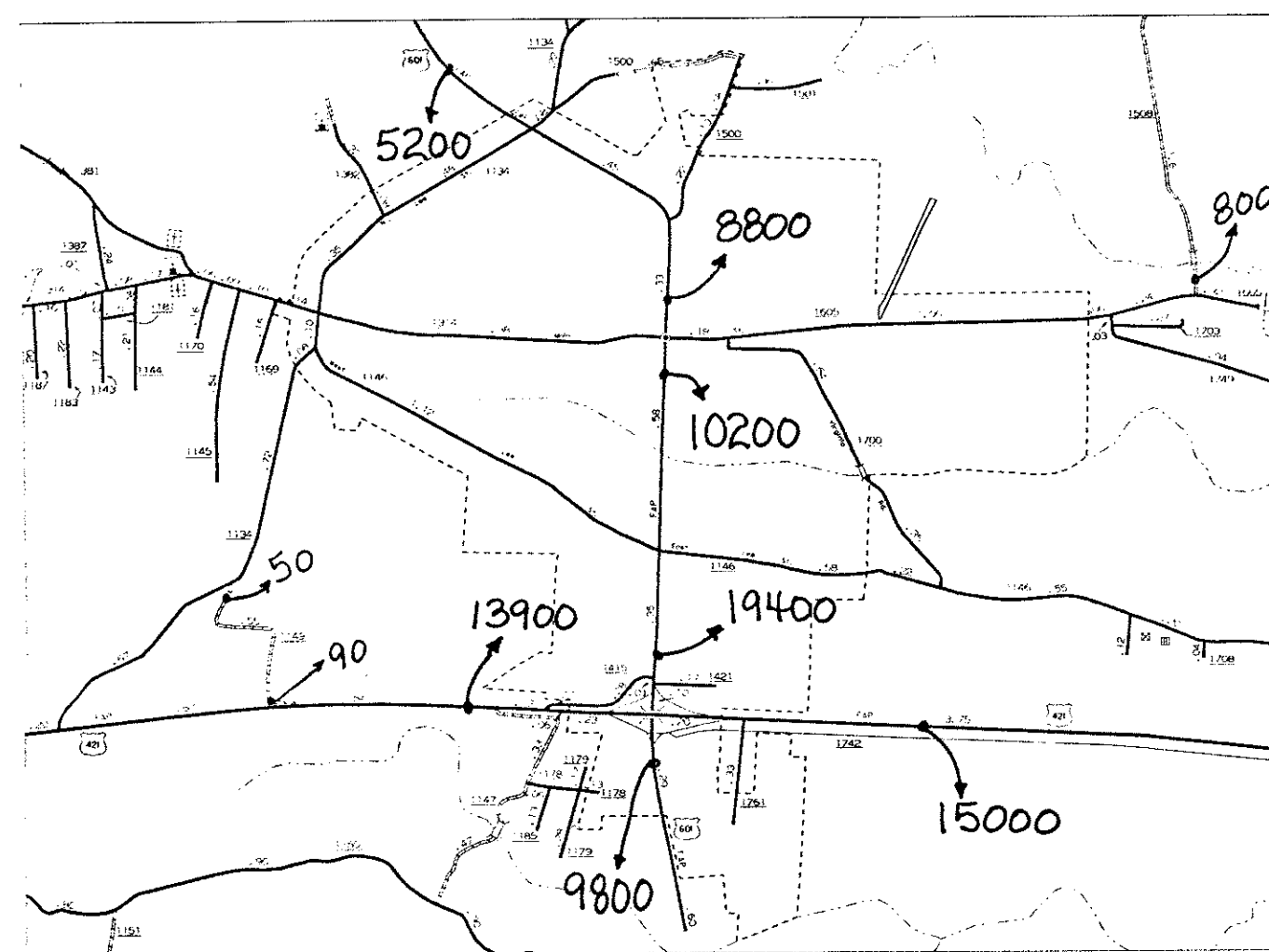
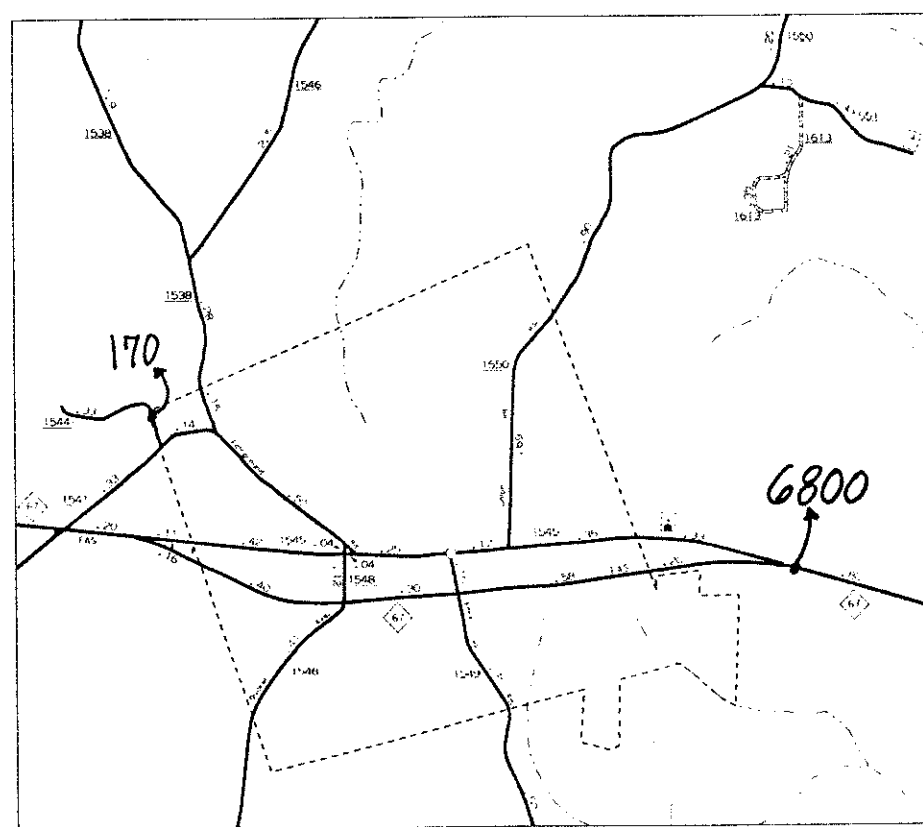


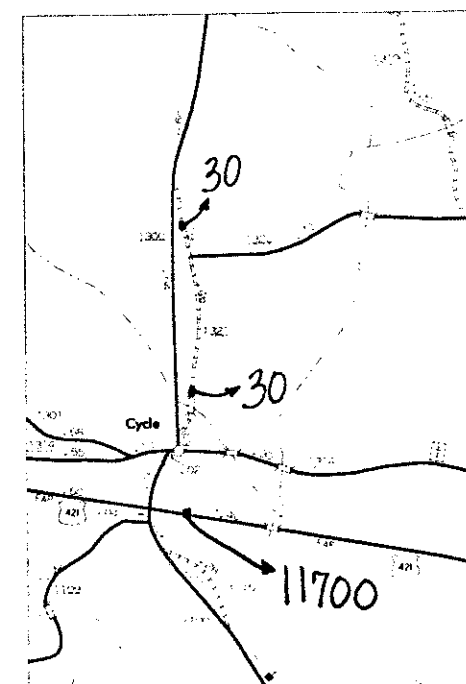
JONESVILLE AND ARLINGTON



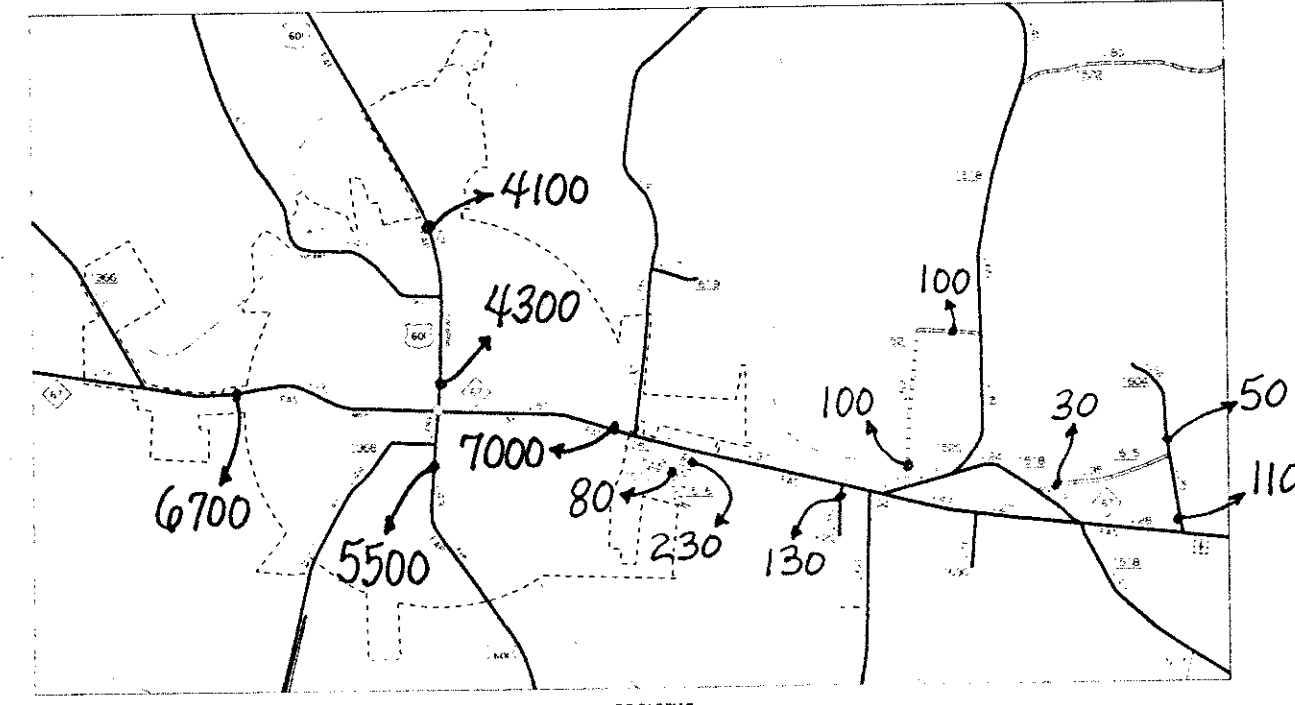
YADKINVILLE



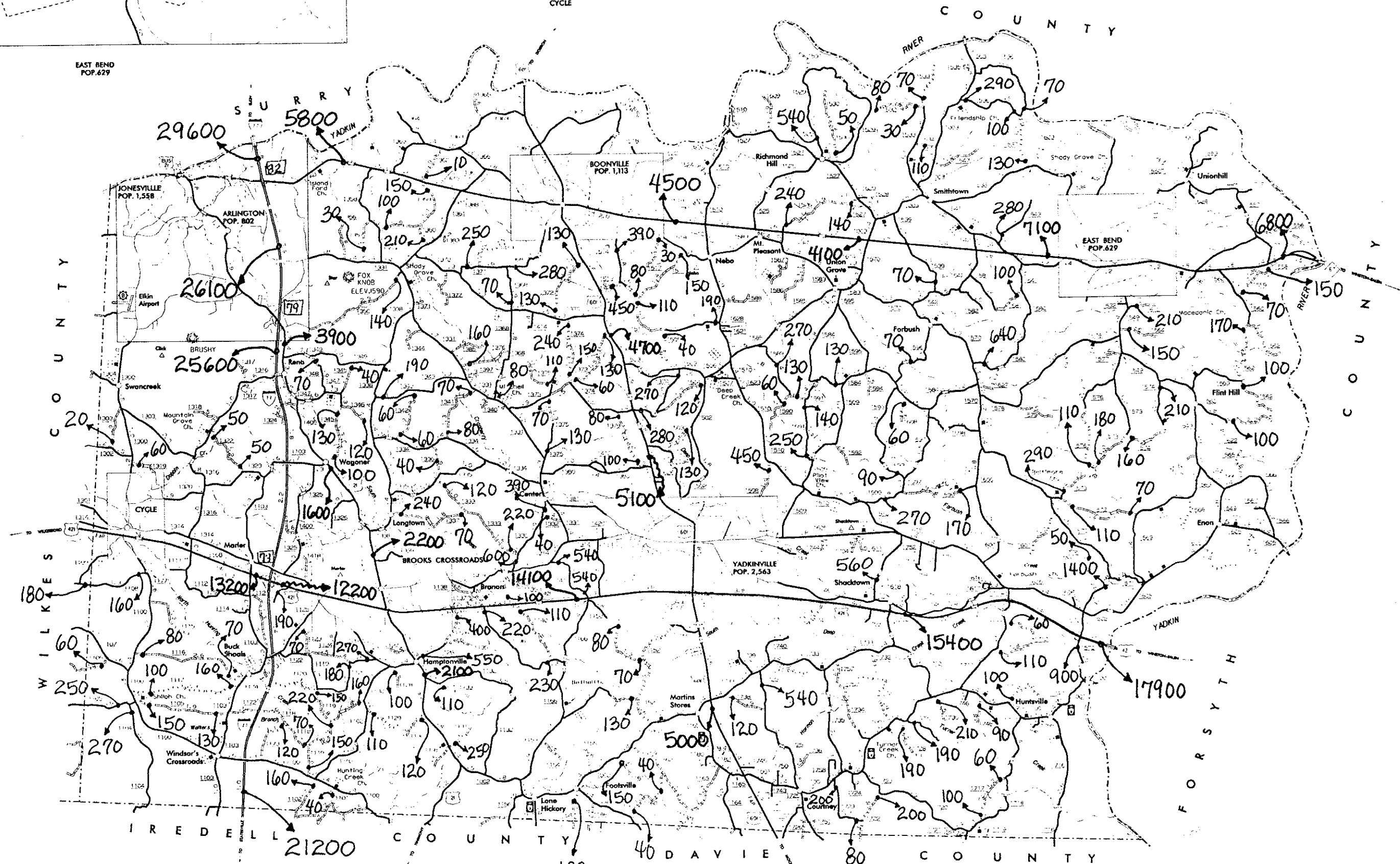
EAST BEND



CYCLE



BOONEVILLE

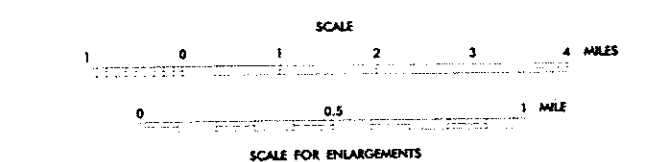


N.C. Department of Transportation
Statewide Planning Branch
Traffic Surveys
P.O. Box 25201
Raleigh, NC 27611

1996
ANNUAL
AVERAGE
DAILY
TRAFFIC

YADKIN COUNTY NORTH CAROLINA

PREPARED BY THE
NORTH CAROLINA DEPARTMENT OF TRANSPORTATION
DIVISION OF HIGHWAYS - GIS BRANCH
IN COOPERATION WITH THE
U.S. DEPARTMENT OF TRANSPORTATION
FEDERAL HIGHWAY ADMINISTRATION



263
SHEET 1 OF 1

COPIES OF THIS MAP ARE AVAILABLE
TO THE PUBLIC AT A NOMINAL COST
FROM THE NORTH CAROLINA DEPARTMENT OF TRANSPORTATION
DIVISION OF HIGHWAYS
RALEIGH, NORTH CAROLINA 27611

REVISED	DATE	BY
6-1-93		

197