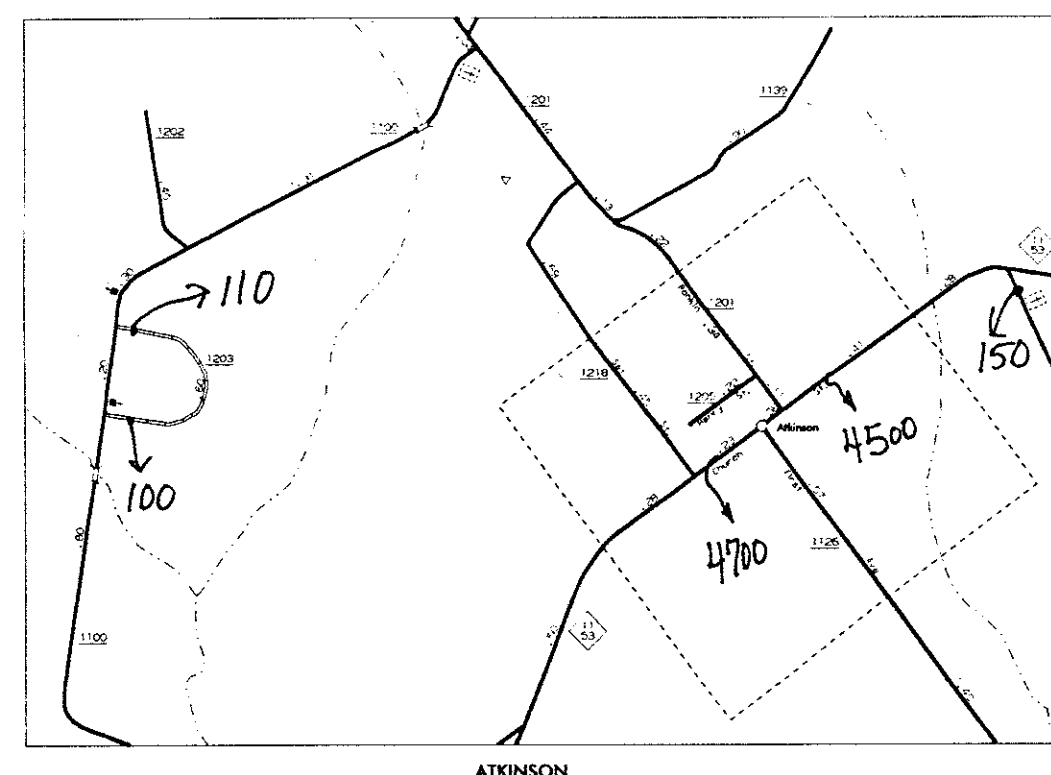
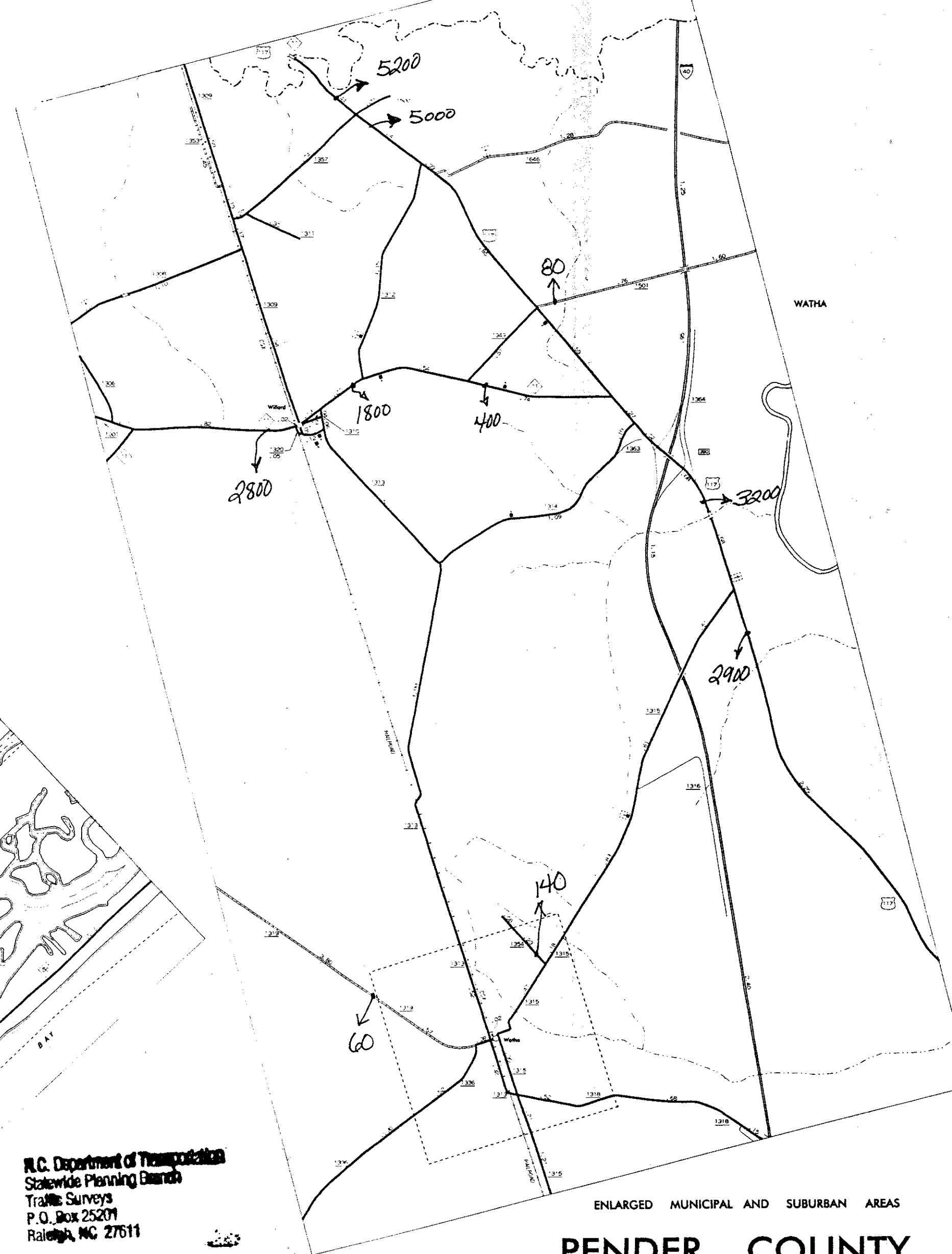


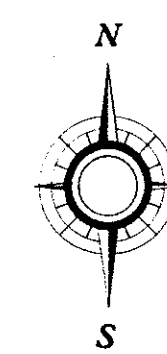
N.C. Department of Transportation
Statewide Planning Branch
Traffic Surveys
P.O. Box 25201
Raleigh, NC 27611

1996
ANNUAL
AVERAGE
DAILY
TRAFFIC



COPIES OF THIS MAP ARE AVAILABLE
TO THE PUBLIC AT A NOMINAL COST
FROM THE NORTH CAROLINA
DEPARTMENT OF TRANSPORTATION
RALEIGH NORTH CAROLINA 27611

REVISED	DATE	BY
1-1-95		

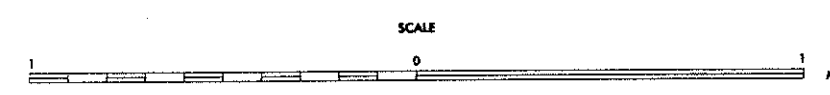


ENLARGED MUNICIPAL AND SUBURBAN AREAS

PENDER COUNTY
NORTH CAROLINA

PREPARED BY THE
NORTH CAROLINA DEPARTMENT OF TRANSPORTATION
DIVISION OF HIGHWAYS - GIS UNIT

IN COOPERATION WITH THE
U.S. DEPARTMENT OF TRANSPORTATION
FEDERAL HIGHWAY ADMINISTRATION



15,000 FOOT GRID BASED ON NORTH CAROLINA PLANE COORDINATE SYSTEM