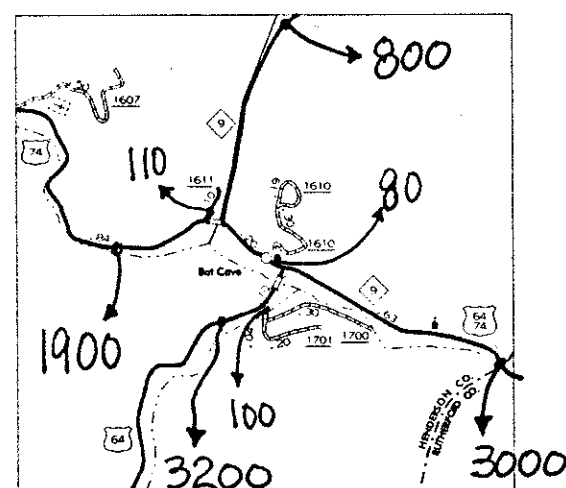
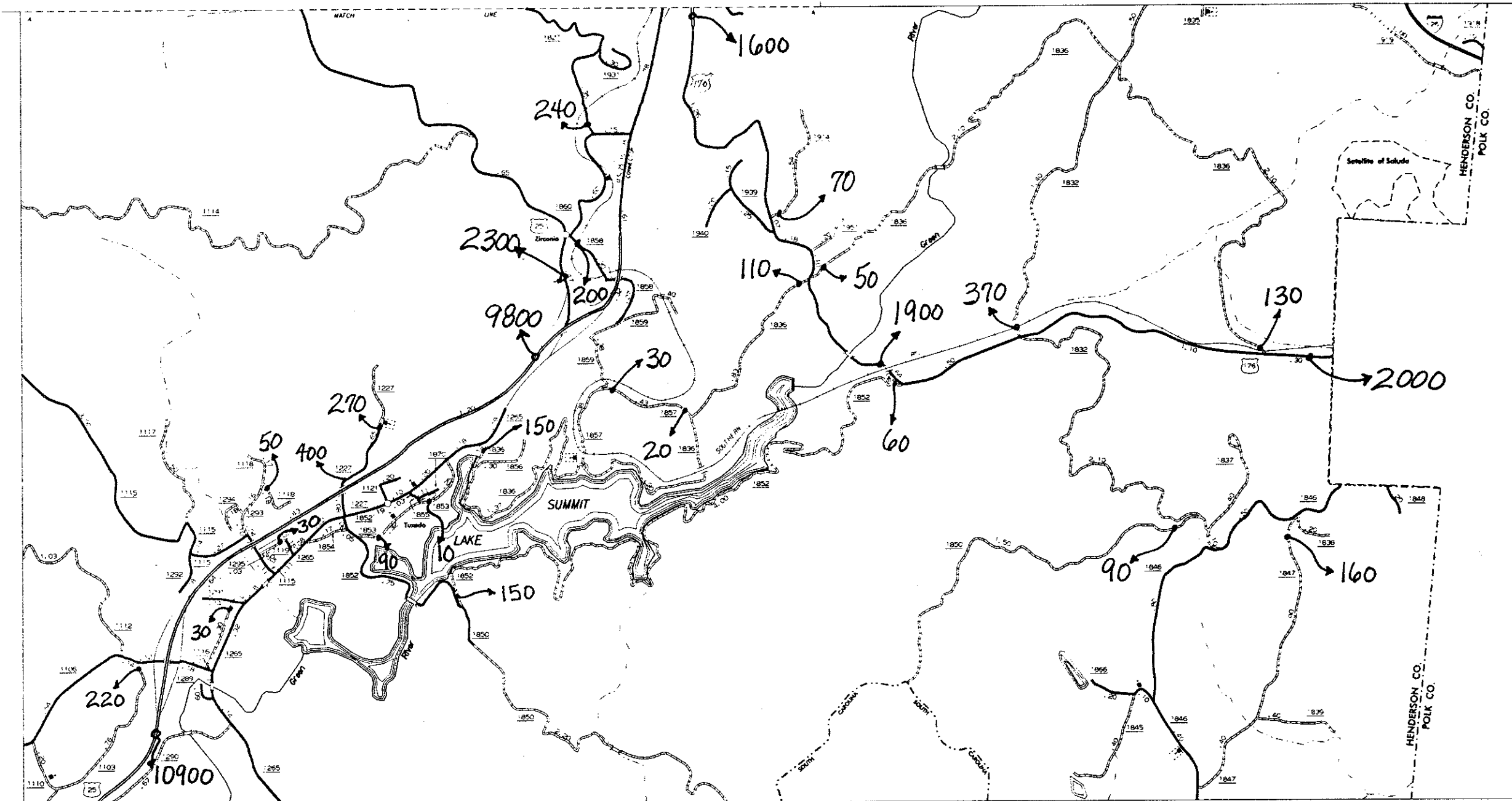
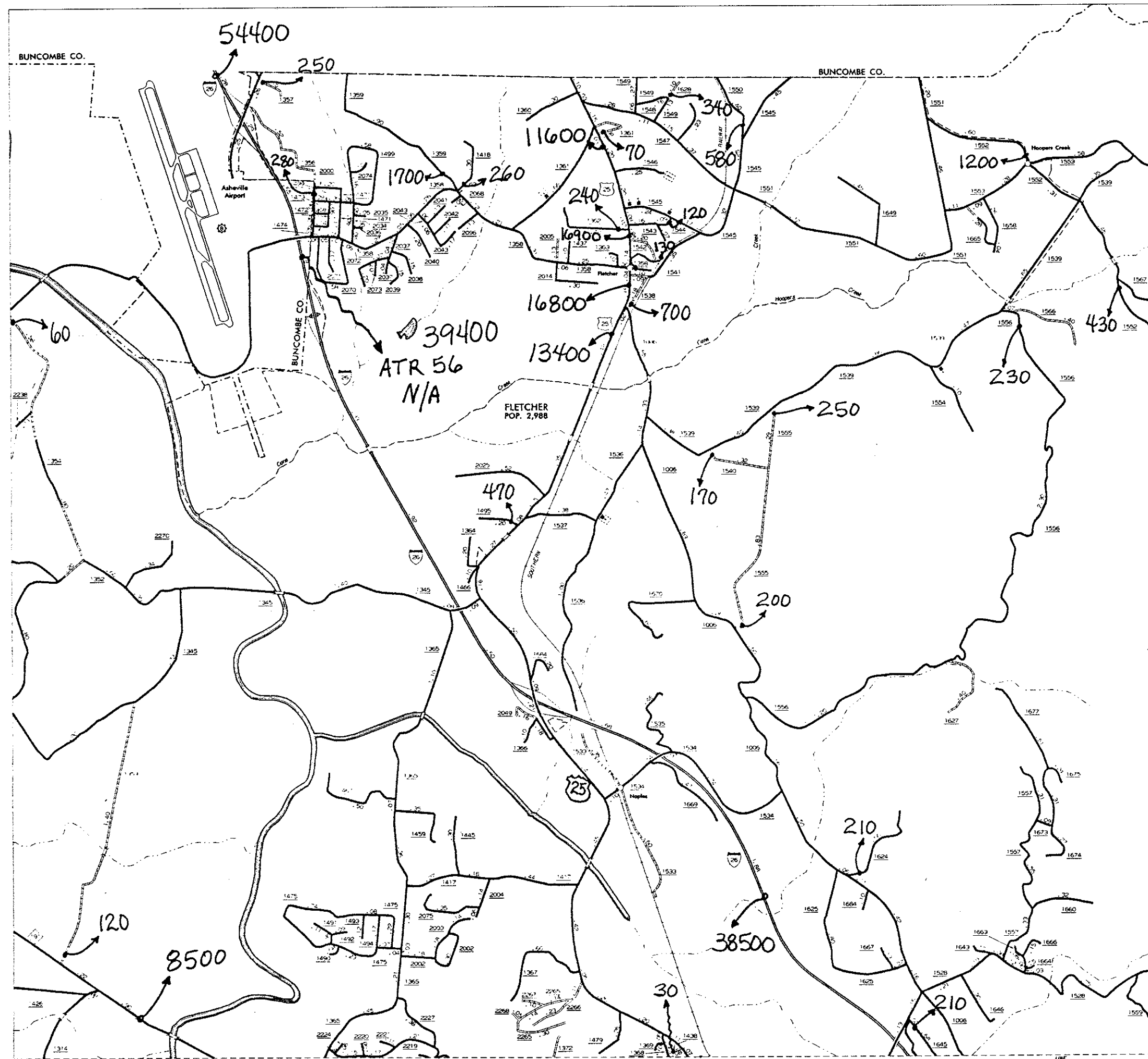


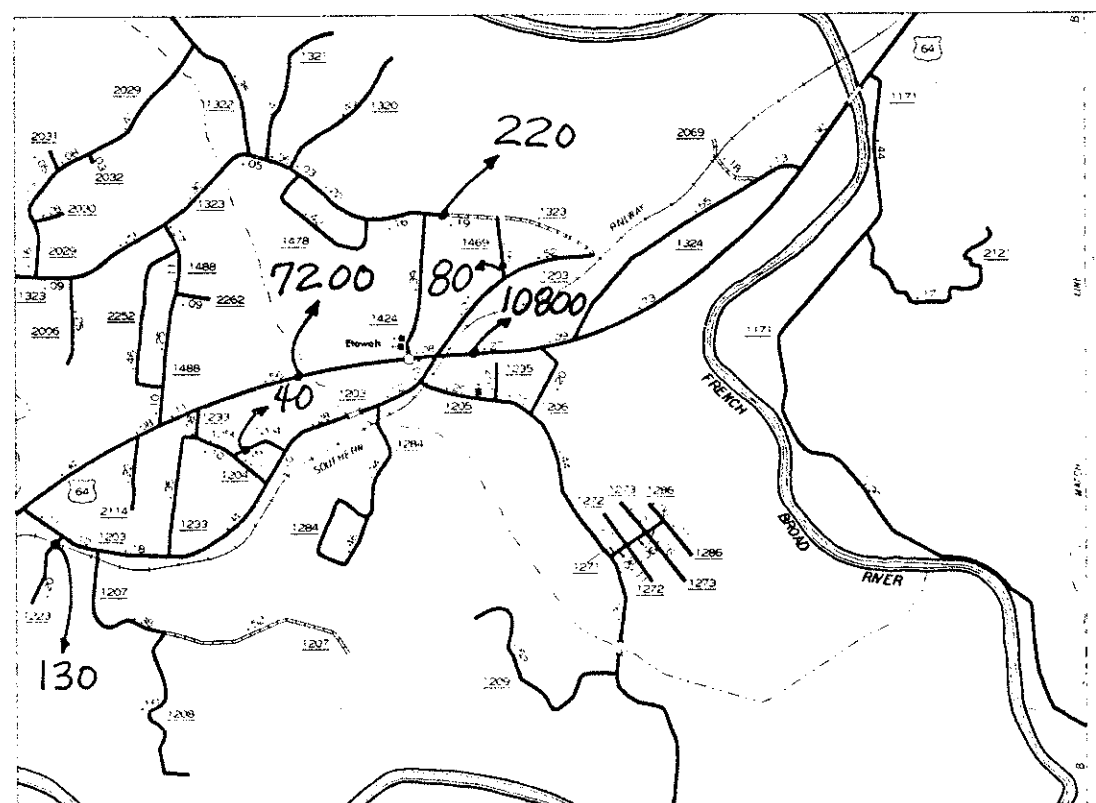
GERTON



BAT CAVE

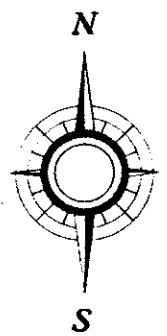


TUXEDO



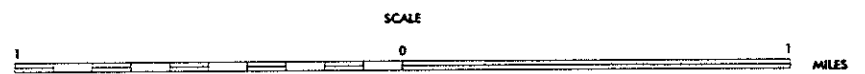
ETOWAH

N.C. Department of Transportation
Statewide Planning Branch
Traffic Surveys
P.O. Box 25201
Raleigh, NC 27611



1996
ANNUAL
AVERAGE
DAILY
TRAFFIC

ENLARGED MUNICIPAL AND SUBURBAN AREAS
HENDERSON COUNTY
NORTH CAROLINA
PREPARED BY THE
NORTH CAROLINA DEPARTMENT OF TRANSPORTATION
DIVISION OF HIGHWAYS - GIS UNIT
IN COOPERATION WITH THE
U.S. DEPARTMENT OF TRANSPORTATION
FEDERAL HIGHWAY ADMINISTRATION



124
SHEET 3 OF 3

REVISIONS
3-1-95 JLS