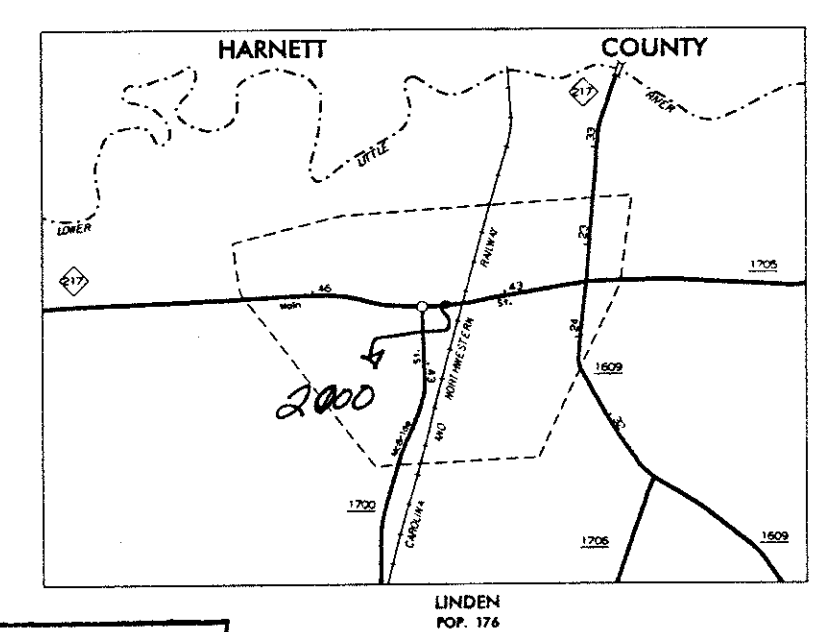
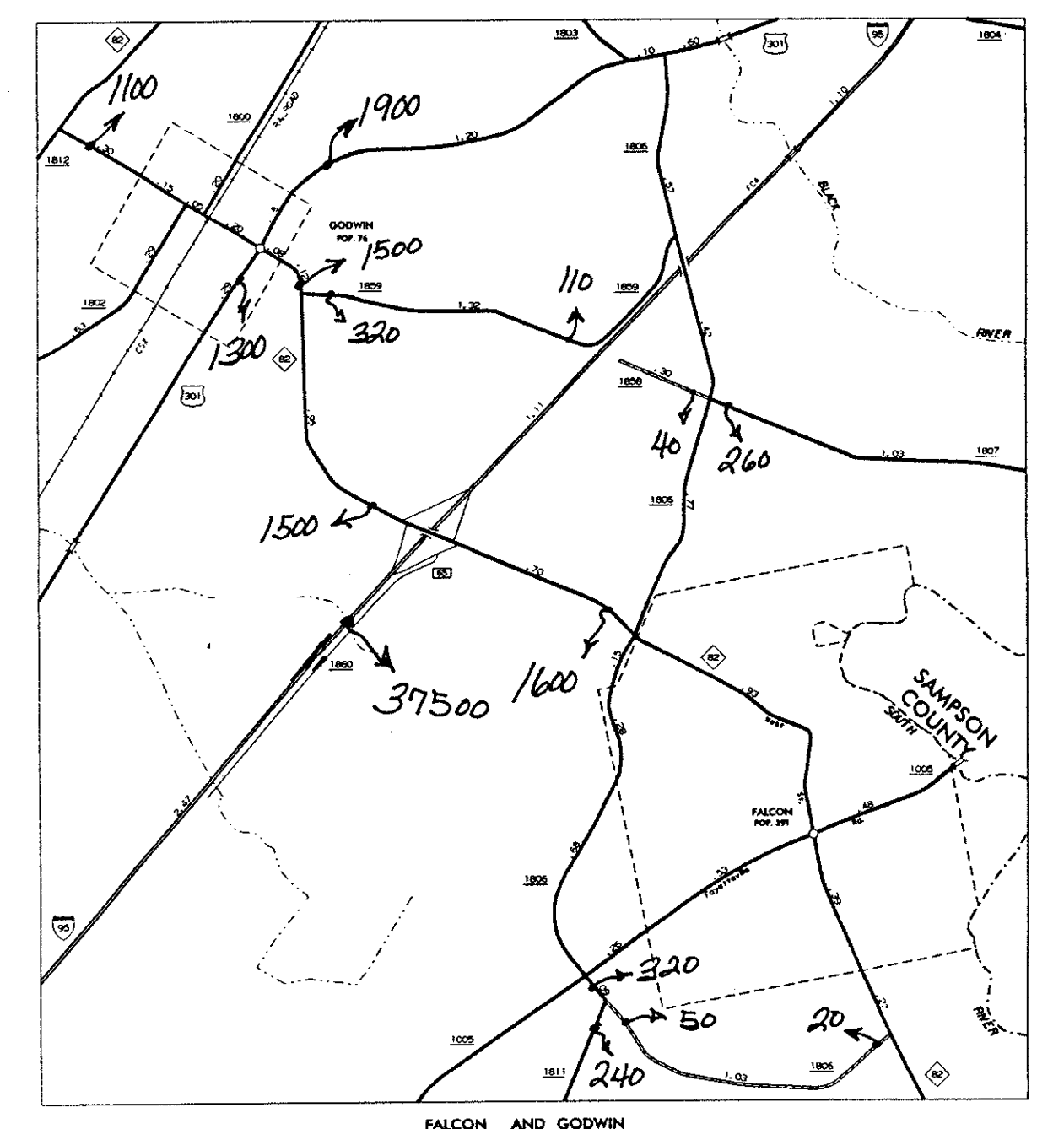
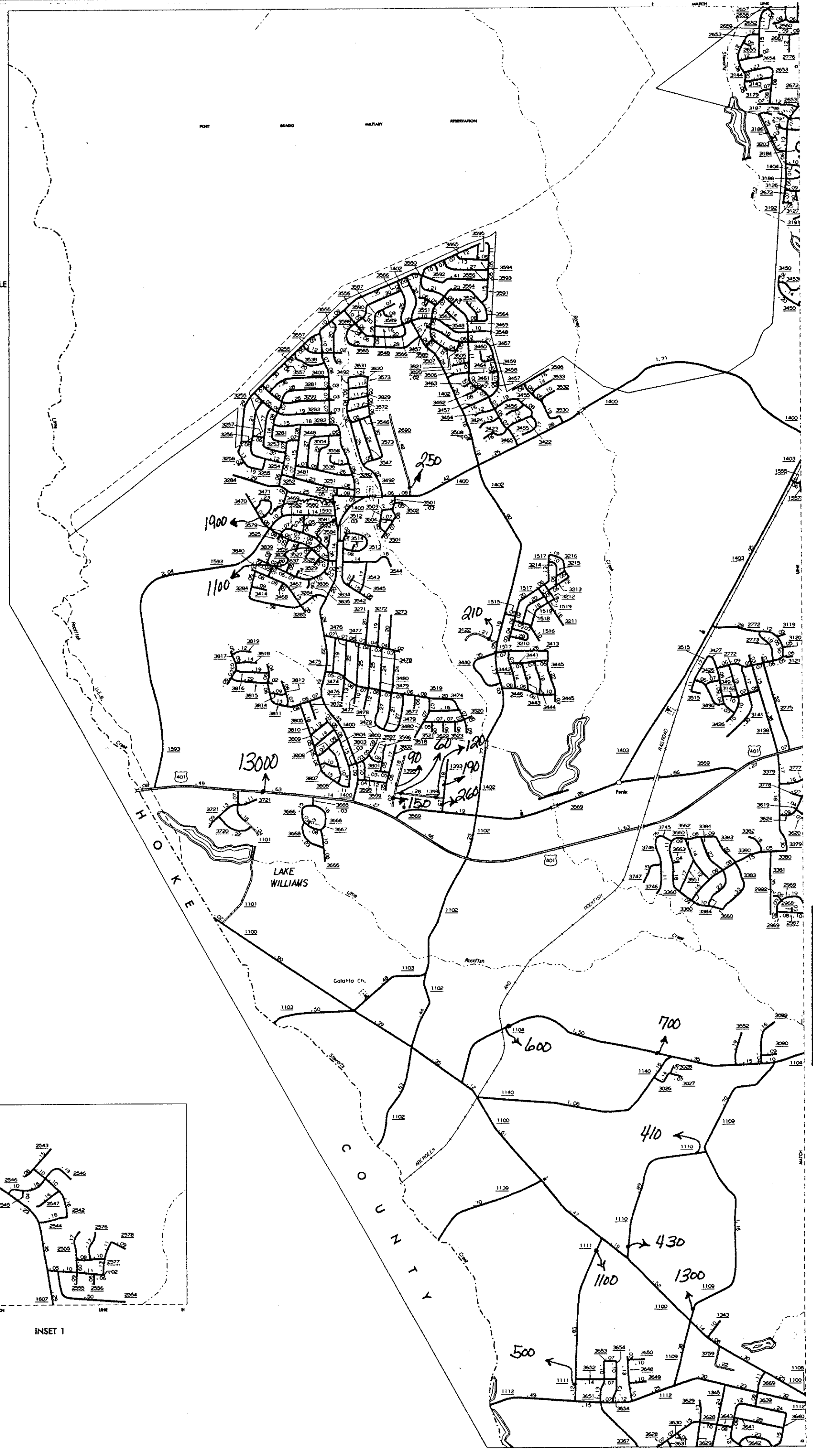
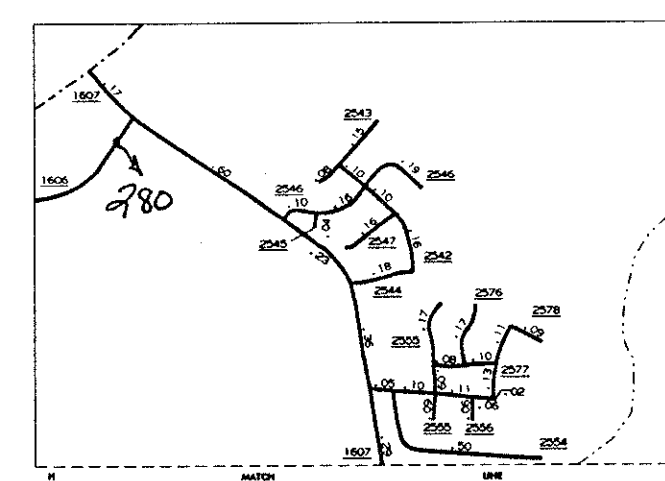
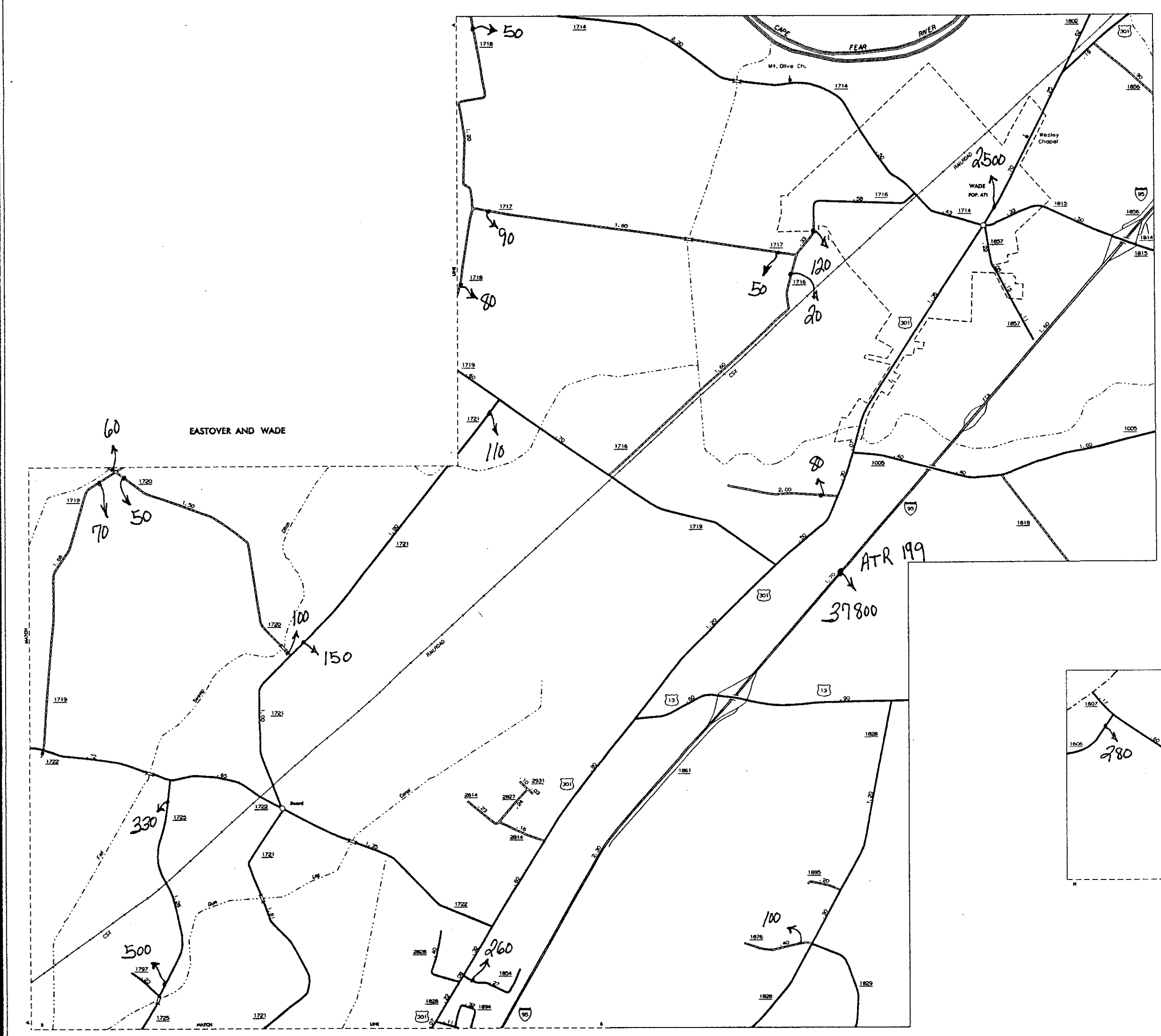
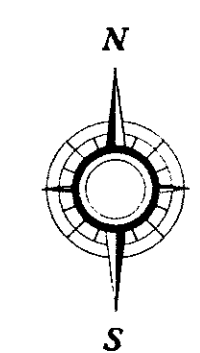


CUMBERLAND COUNTY
 SHEET 4
 CONE OF THIS MAP ARE AVAILABLE
 FOR THE PUBLIC AT A NOMINAL COST
 FROM THE NORTH CAROLINA
 DEPARTMENT OF TRANSPORTATION
 DIVISION OF HIGHWAYS
 RALEIGH, NORTH CAROLINA 27611

REVISION	DATE	BY	APP'D



1996
 ANNUAL
 AVERAGE
 DAILY
 TRAFFIC

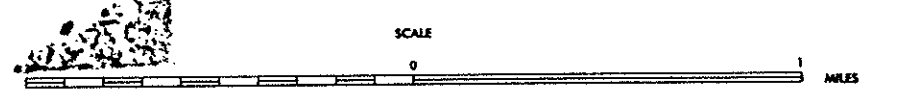


ENLARGED MUNICIPAL AND SUBURBAN AREAS
CUMBERLAND COUNTY
 NORTH CAROLINA

PREPARED BY THE
 NORTH CAROLINA DEPARTMENT OF TRANSPORTATION
 DIVISION OF HIGHWAYS - GIS UNIT

IN COOPERATION WITH THE
 U.S. DEPARTMENT OF TRANSPORTATION
 FEDERAL HIGHWAY ADMINISTRATION

N.C. Department of Transportation
 Statewide Planning Branch
 Traffic Surveys
 P.O. Box 25201
 Raleigh, NC 27611



STATE FOOT GRID BASED ON NORTH CAROLINA PLANE COORDINATE SYSTEM
 NORTH CAROLINA