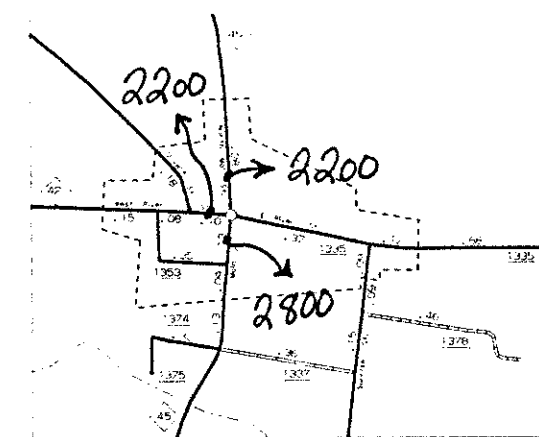
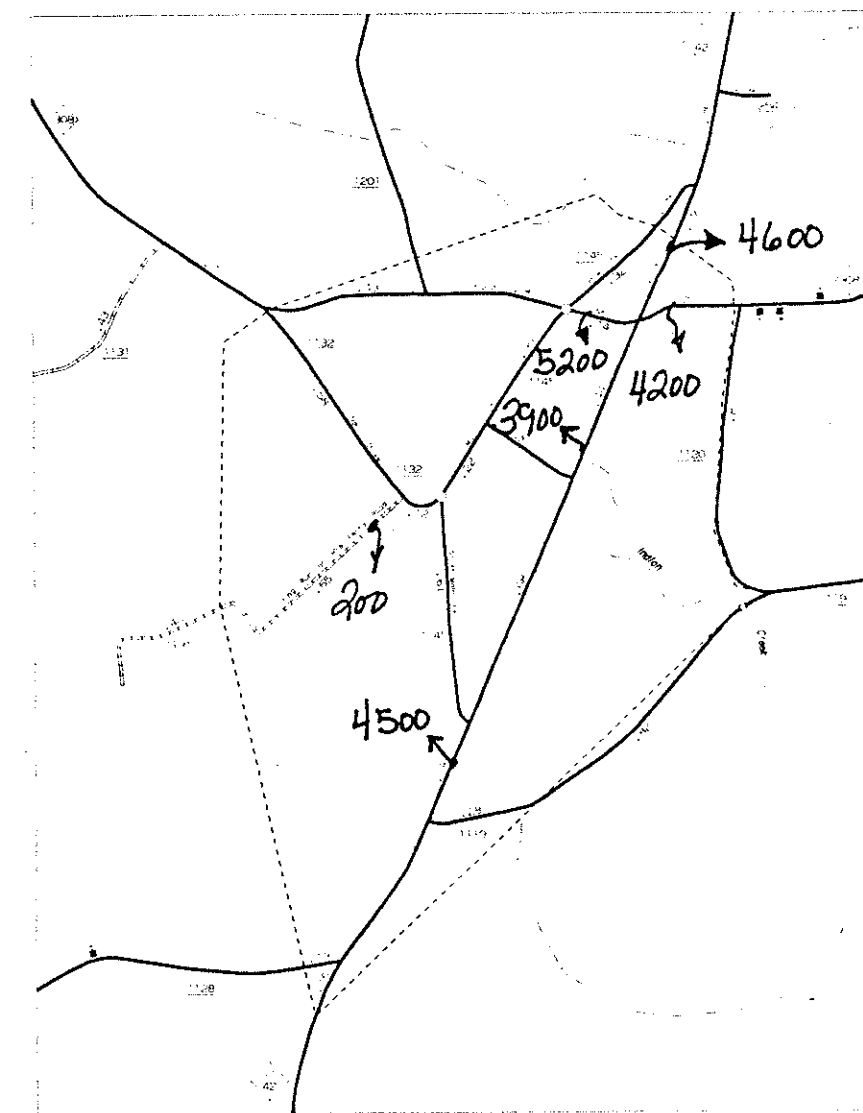


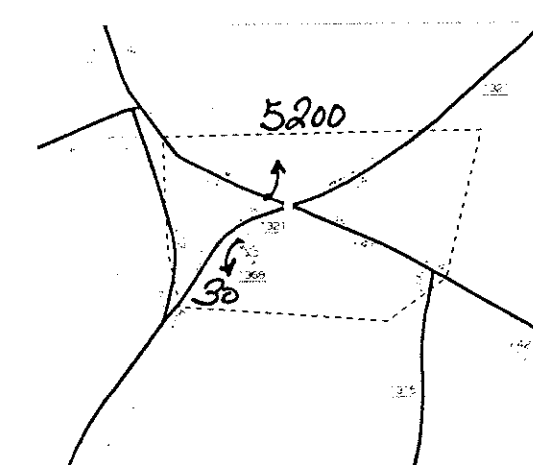
ASKEWVILLE
POP. 327



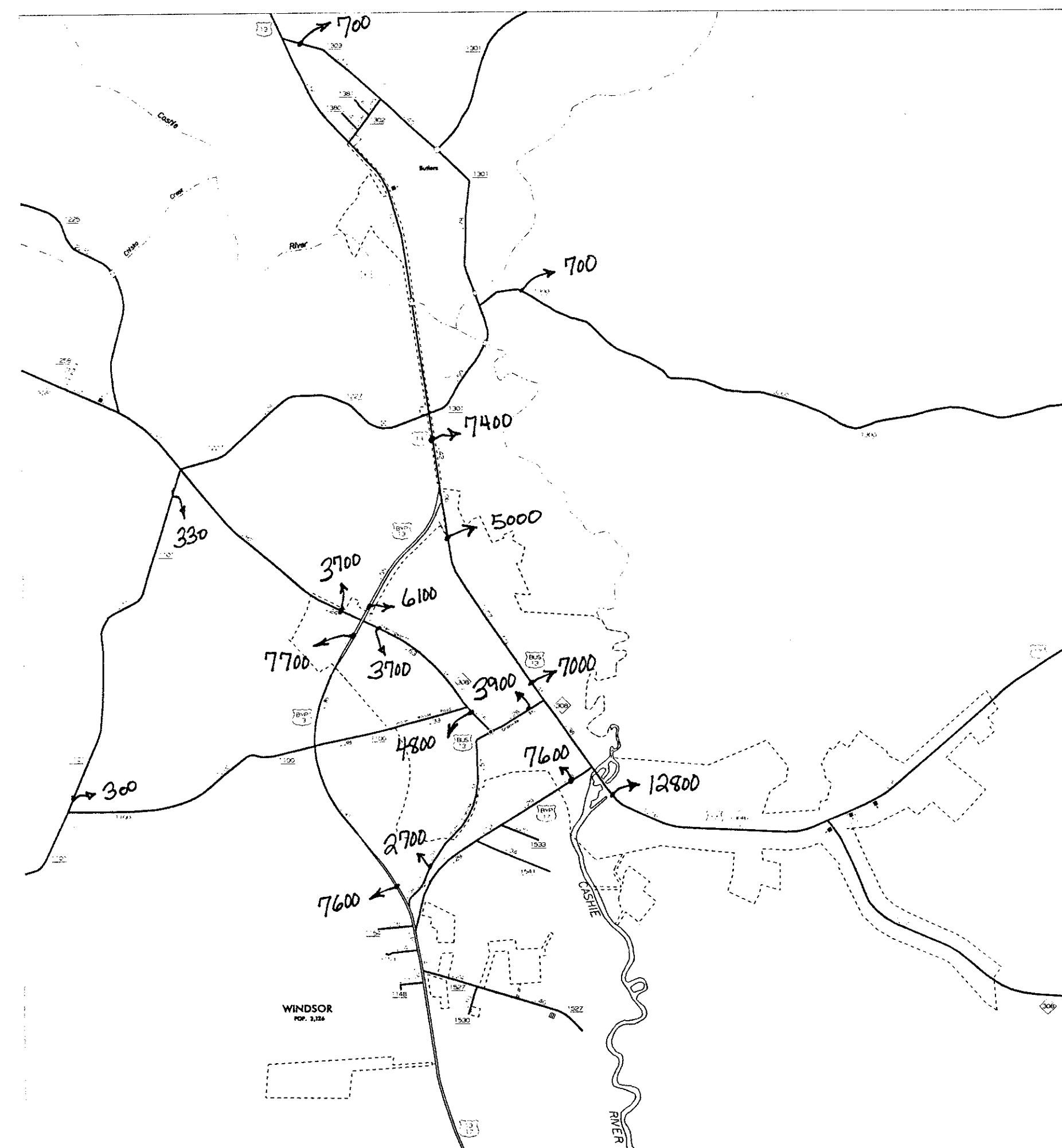
COLERAIN
POP. 284



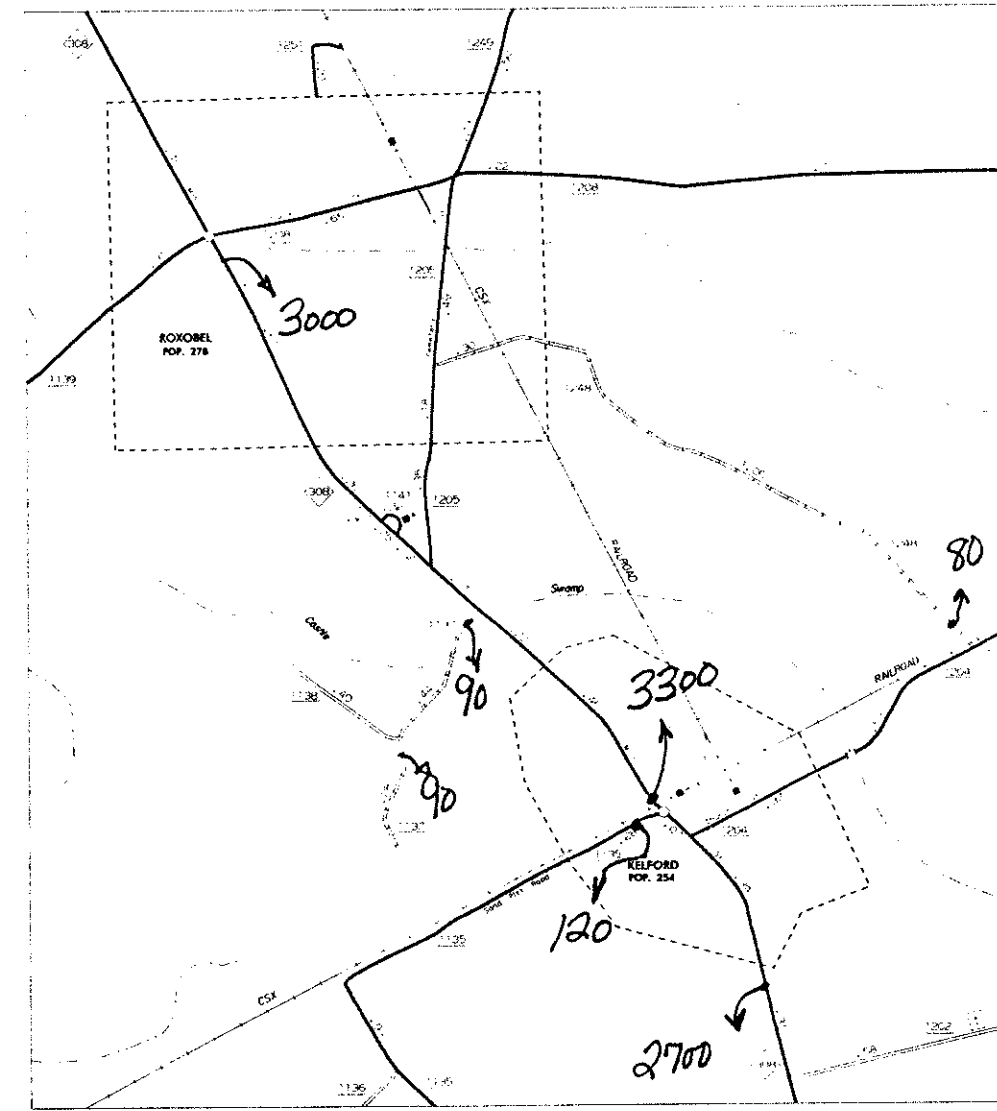
LEWISTON WOODVILLE
POP. 471



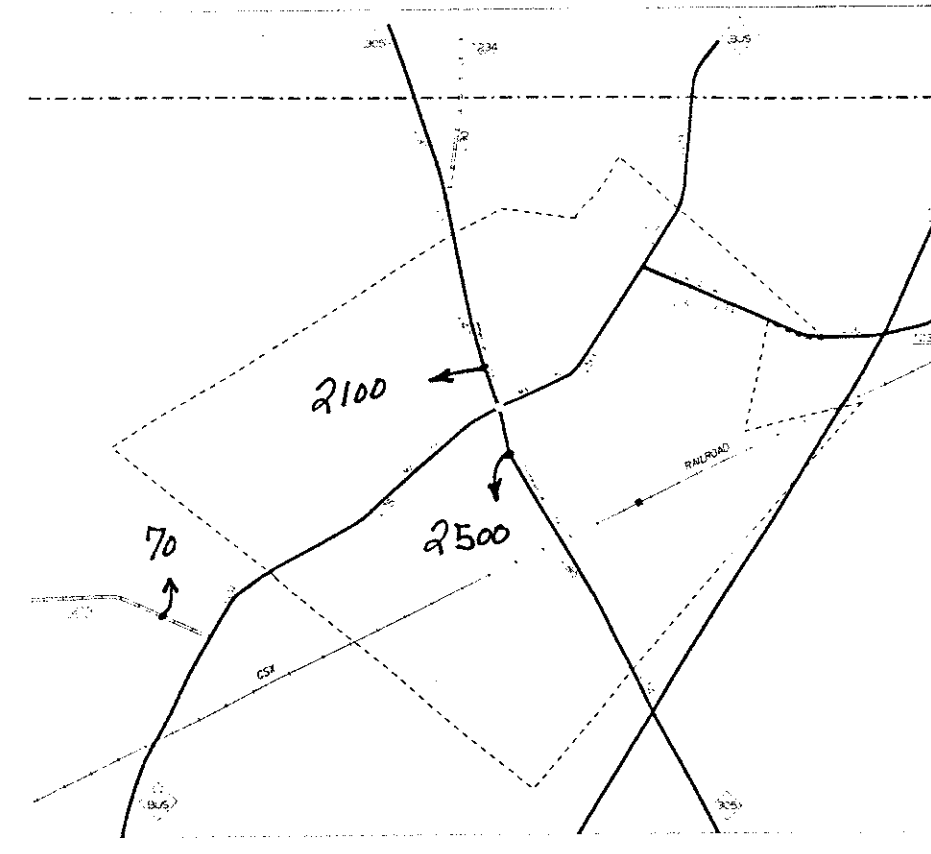
POWELLVILLE
POP. 381



WINDSOR
POP. 324

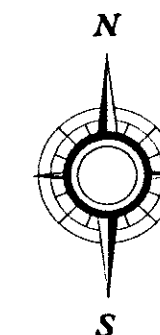


ROXOBEL
POP. 374



AULANDER
POP. 124

1996
ANNUAL
AVERAGE
DAILY
TRAFFIC



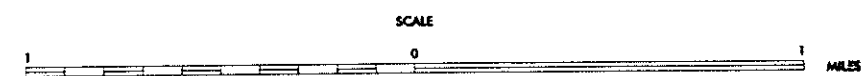
ENLARGED MUNICIPAL AND SUBURBAN AREAS

BERTIE COUNTY NORTH CAROLINA

PREPARED BY THE
NORTH CAROLINA DEPARTMENT OF TRANSPORTATION
DIVISION OF HIGHWAYS - GIS UNIT

IN COOPERATION WITH THE
U.S. DEPARTMENT OF TRANSPORTATION
FEDERAL HIGHWAY ADMINISTRATION

N.C. Department of Transportation
Statewide Planning Branch
Traffic Surveys
P.O. Box 25201
Raleigh, NC 27611



NAD 83 STATE PLANE COORDINATE SYSTEM
NORTH CAROLINA
FEDERAL HIGHWAY ADMINISTRATION

COPIES OF THIS MAP ARE AVAILABLE
TO THE PUBLIC AT A NOMINAL COST
FROM THE
NORTH CAROLINA DEPARTMENT OF TRANSPORTATION
DIVISION OF HIGHWAYS
MAISON, NORTH CAROLINA 27521

REVISED

1996	1997	1998	1999	2000	2001	2002	2003	2004	2005	2006	2007	2008	2009	2010	2011	2012	2013	2014	2015	2016	2017	2018	2019	2020	2021	2022	2023	2024	2025
------	------	------	------	------	------	------	------	------	------	------	------	------	------	------	------	------	------	------	------	------	------	------	------	------	------	------	------	------	------