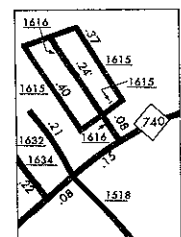
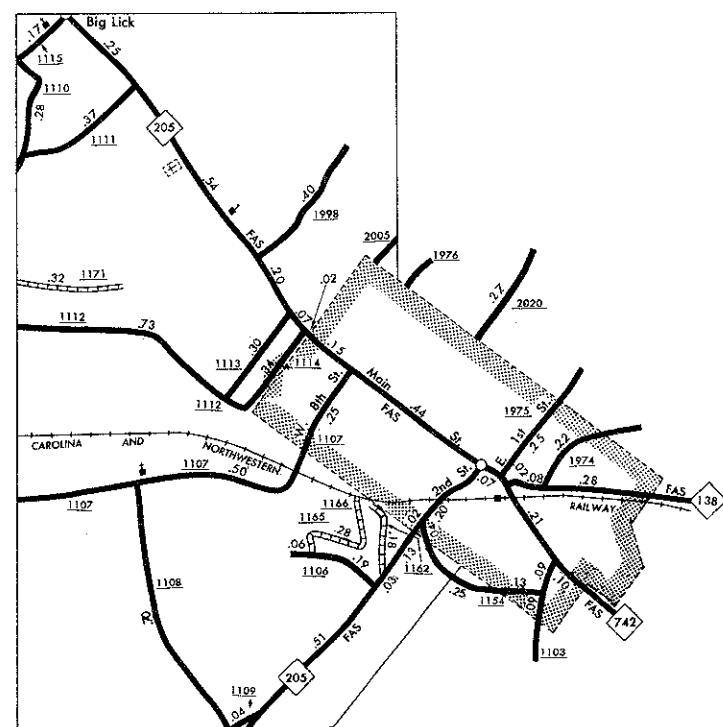


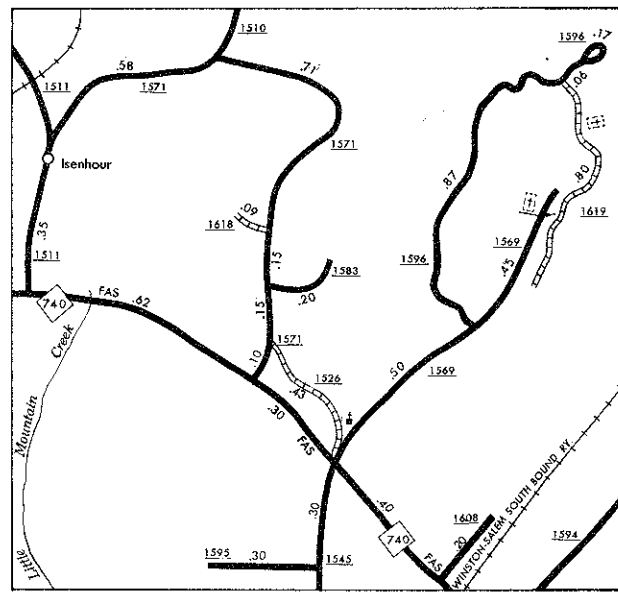
RICHFIELD
POP. 373



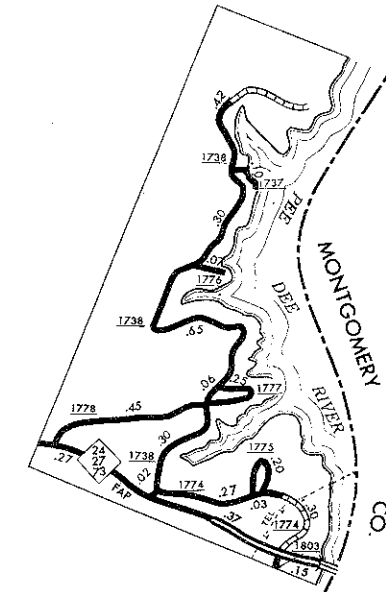
OAKBORO
POP. 587



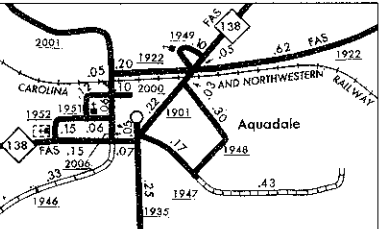
AQUADALE



IKENHOUR



ALBEMARLE

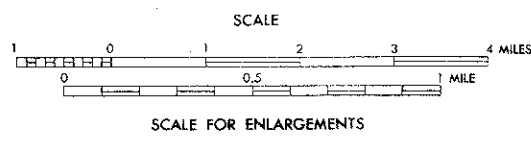


AQUADALE

- LEGEND**
- PRIMITIVE OR UNIMPROVED ROAD
 - GRAVEL AND DRAINED ROAD
 - LOCAL GRAVEL OR STONE SURFACED ROAD
 - HARD SURFACED ROAD
 - LANE UNIMPROVED HIGHWAY
 - EXPOSED HIGHWAY
 - HIGHWAY WITH FRONTAGE ROADS
 - FUEL CONTROL ACCESS
 - FEDERAL AID INTERSTATE ROAD
 - FEDERAL AID PRIMARY ROAD
 - FEDERAL AID SECONDARY ROAD
 - FEDERAL AID URBAN
 - NON-SYSTEM ROAD
 - PROJECTED LOCATION
 - INTERSECTION DISTANCE
 - TRAFFIC CIRCLE
 - DETAILED HIGHWAY INTERCHANGE
 - INTERSTATE HIGHWAY
 - U.S. NUMBERED HIGHWAY
 - U.S. NUMBERED BICYCLE ROUTE
 - N.C. NUMBERED HIGHWAY
 - N.C. NUMBERED BICYCLE ROUTE
 - INTERSTATE INTERCHANGE NUMBER
 - SECONDARY ROAD NUMBER
 - UNDERGROUND CABLE
 - INDICATED ANY NUMBER OF TRACED USED BY SINGLE OPERATING COMPANY
 - INDICATED ANY NUMBER OF TRACED USED BY MORE THAN ONE OPERATING COMPANY ON SEPARATE OR ADJACENT RIGHTS OF WAY
 - RAILROAD STATION
 - GRADE CROSSING
 - UNDERPASS
 - OVERPASS
 - RAILROAD TUNNEL
 - ARMY, NAVY, OR MARINE CORPS FIELD
 - CONV. OR MUNICIPAL AIRPORT
 - MARKED AIRWAY FIELD
 - MARKER OR PROJECT "N" (SUNBOL)
 - FREE OR TOLL FERRY
 - LIGHTHOUSE
 - COAST GUARD STATION
 - CANAL
 - NARROW STREAM
 - WIDE STREAM
 - DAM WITH LOCK
 - DAM
 - RESERVOIR, POND, OR LAKE
 - PROMINENT PEAK, NUMERALS
 - PRECISE ELEVATION
 - ROAD THROUGH MOUNTAIN PASS
 - HIGHWAY BRIDGE OVER 20 FT.
 - DRAW SPAN ON BRIDGE
 - HIGHWAY TUNNEL
 - ROAD
 - STATE LINE
 - COUNTY LINE
 - CITY LIMITS
 - RESERVATION OR PARK BOUNDARY
 - WET AREA
 - UNINCORPORATED CENSUS DISBURSED PLACE
 - COUNTY SEAT
 - OTHER TOWNS AND VILLAGES
 - TRANSMISSION STATION
 - INCORPORATED CITY OR VILLAGE (CENSUS-1950)
 - SCHOOL
 - CHURCH
 - CHURCH WITH CEMETERY
 - CEMETERY
 - HOSPITAL
 - CORRECTIONAL OR PENAL INSTITUTION
 - HIGHWAY GARAGE OR WAREHOUSE
 - HIGHWAY DIV. OR DIST. OFFICE
 - RAILROAD STATION
 - RAILROAD
 - NEST AREA
 - MONUMENT--SMALL HISTORICAL SITE

STANLY COUNTY NORTH CAROLINA

PREPARED BY THE
NORTH CAROLINA DEPARTMENT OF TRANSPORTATION
DIVISION OF HIGHWAYS--PLANNING AND RESEARCH BRANCH
IN COOPERATION WITH THE
U.S. DEPARTMENT OF TRANSPORTATION
FEDERAL HIGHWAY ADMINISTRATION



16200 1000 GRID BASED ON NORTH CAROLINA PLANE COORDINATE SYSTEM
POLYCONIC PROJECTION

COPIES OF THIS MAP ARE AVAILABLE
TO THE PUBLIC AT A NOMINAL COST.
ADDRESS: DIVISION OF HIGHWAYS
RAILROAD, NORTH CAROLINA, 27611

KEY TO COUNTY ROAD NUMBERS
1-1-81
1-1-82
1-1-83
1-1-84
1-1-85
1-1-86
1-1-87
1-1-88
1-1-89
1-1-90
1-1-91
1-1-92
1-1-93
1-1-94
1-1-95
1-1-96
1-1-97
1-1-98
1-1-99
1-1-00

NOTE: MAP INCLUDES ONLY STATE MAINTAINED ROADS
OR IMPORTANT NON-SYSTEM ROADS.
MILEAGE NOT SHOWN ON FRONTAGE ROADS.
ROADS SHOWN AS OF JAN. 1, 1968.

