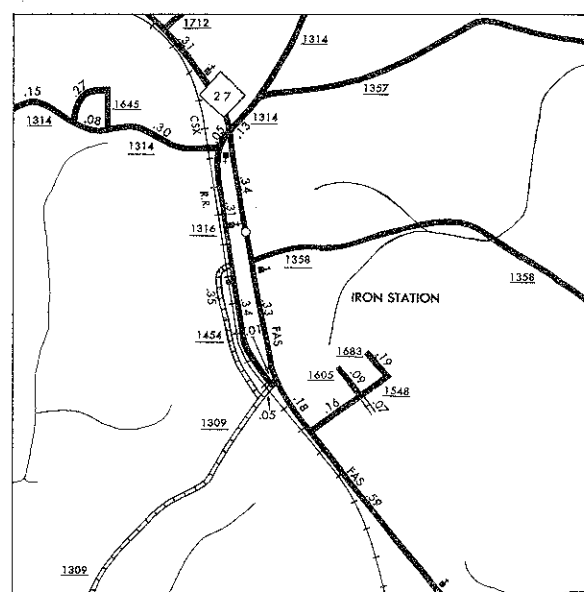
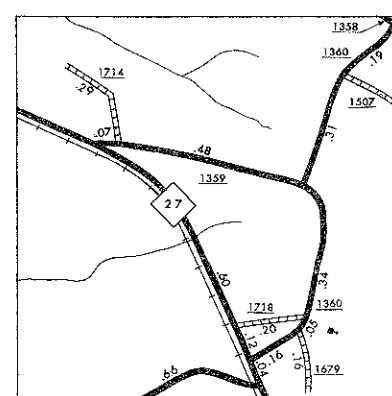


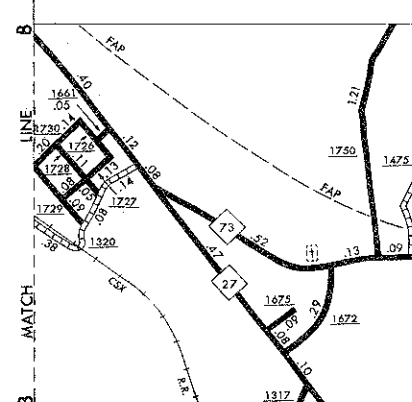
DENVER



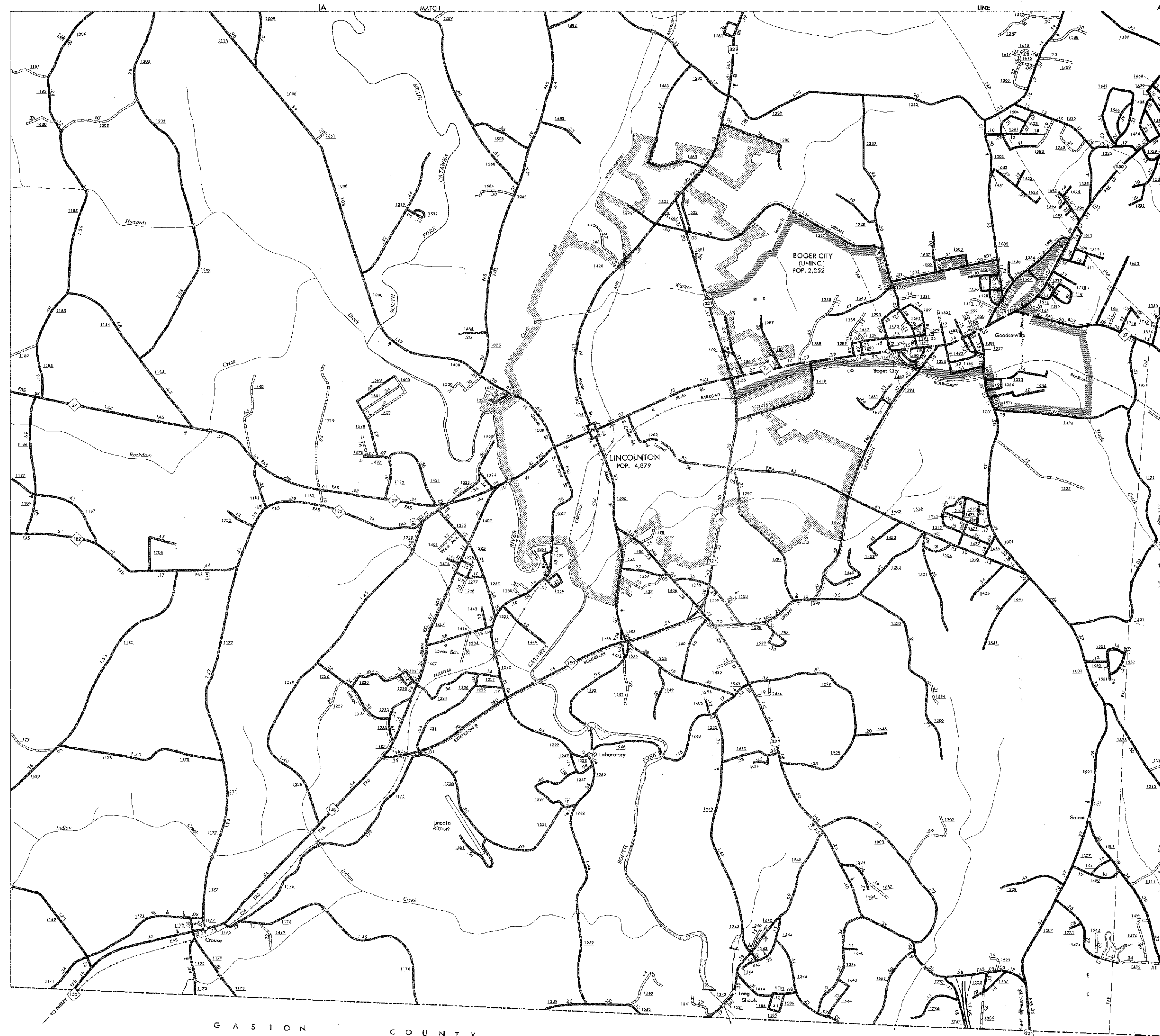
IRON STATION



INSET 1



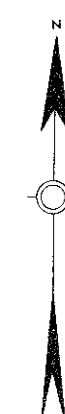
B. MATCH



GASTON COUNTY

LINCOLNTON AND VICINITY

GASTON COUNTY



ENLARGED MUNICIPAL AND SUBURBAN AREAS
LINCOLN COUNTY
NORTH CAROLINA

PREPARED BY THE
NORTH CAROLINA DEPARTMENT OF TRANSPORTATION
DIVISION OF HIGHWAYS - PLANNING AND RESEARCH BRANCH
IN COOPERATION WITH THE
U.S. DEPARTMENT OF TRANSPORTATION
FEDERAL HIGHWAY ADMINISTRATION

SCALE



POLYCONIC PROJECTION

SHEET 2 OF 2

COPIES OF THIS MAP ARE AVAILABLE
TO THE PUBLIC AT A NOMINAL COST.
ADDRESS:
DIVISION OF HIGHWAYS
RALEIGH, NORTH CAROLINA 27611