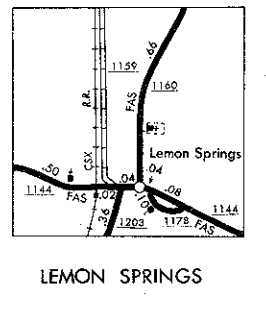
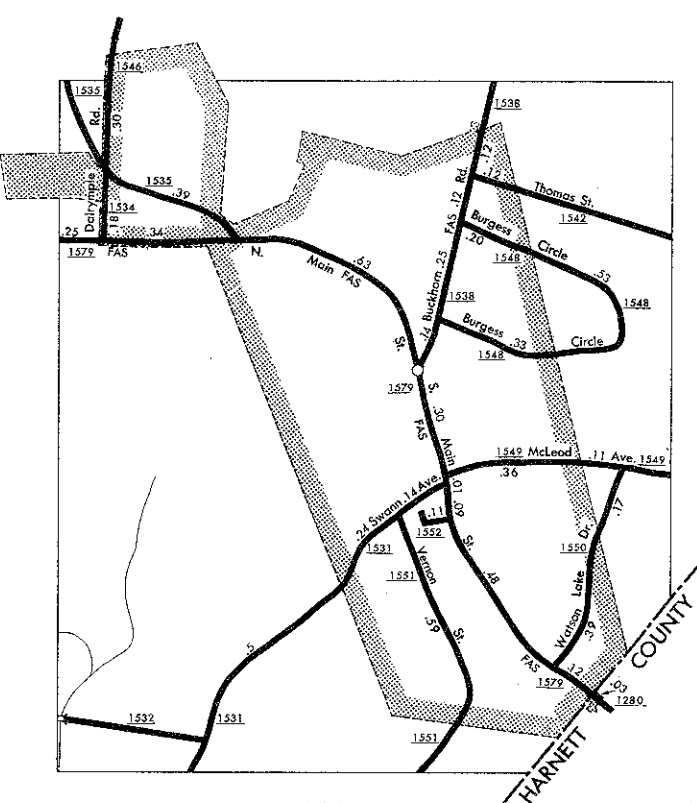
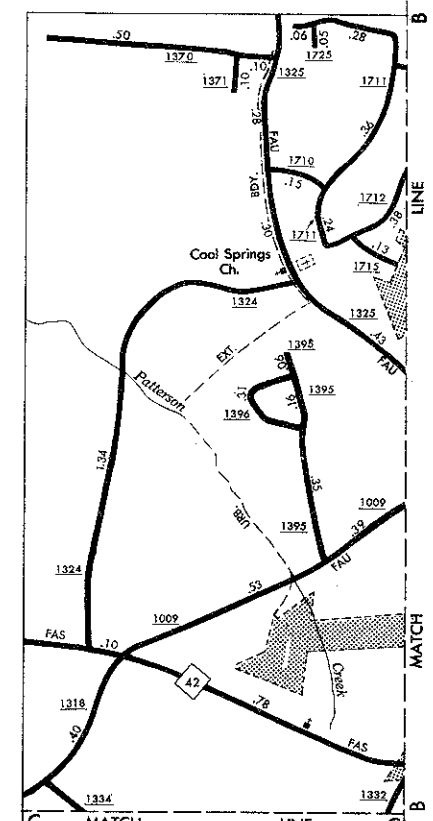
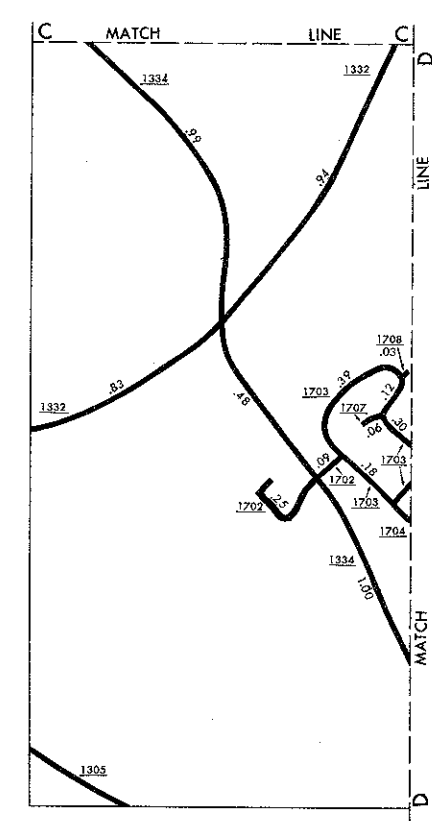


COPIES OF THIS MAP ARE AVAILABLE
TO THE PUBLIC AT A NOMINAL COST.
ADDRESS:
NORTH CAROLINA DEPARTMENT OF TRANSPORTATION
DIVISION OF HIGHWAYS - PLANNING AND RESEARCH BRANCH
RALEIGH, NORTH CAROLINA 27601

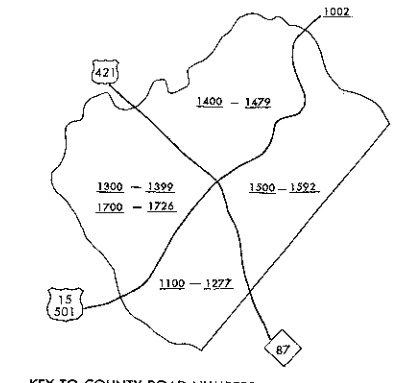
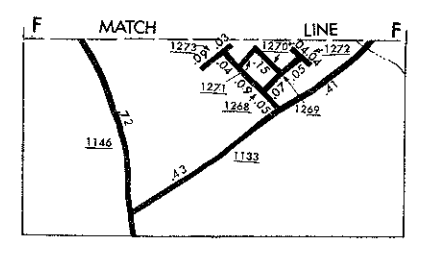
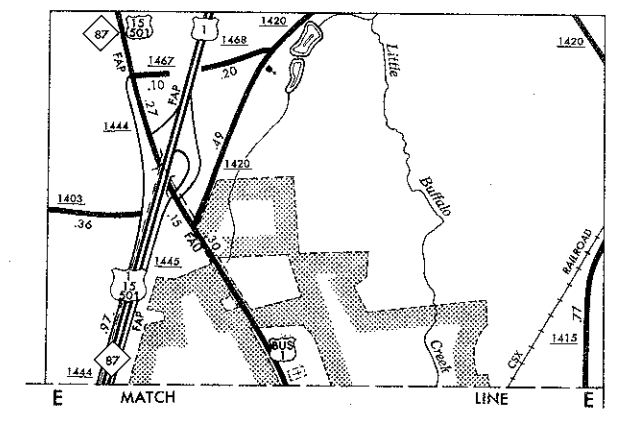
KEY TO COUNTY ROAD NUMBERS	
1-1-42	1-1-42
1-1-43	1-1-43
1-1-44	1-1-44
1-1-45	1-1-45
1-1-46	1-1-46
1-1-47	1-1-47
1-1-48	1-1-48
1-1-49	1-1-49
1-1-50	1-1-50
1-1-51	1-1-51
1-1-52	1-1-52
1-1-53	1-1-53
1-1-54	1-1-54
1-1-55	1-1-55
1-1-56	1-1-56
1-1-57	1-1-57
1-1-58	1-1-58
1-1-59	1-1-59
1-1-60	1-1-60
1-1-61	1-1-61
1-1-62	1-1-62
1-1-63	1-1-63
1-1-64	1-1-64
1-1-65	1-1-65



LEMON SPRINGS



BROADWAY
POP. 908

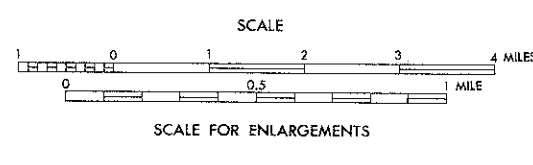


KEY TO COUNTY ROAD NUMBERS
1-1-42 - 1-1-65

NOTE: MAP INCLUDES ONLY STATE MAINTAINED ROADS
OR IMPORTANT NON-STATE ROADS.
ALL OTHER ROADS NOT SHOWN ON THIS MAP.
ROADS SHOWN AS OF JAN. 1, 1988.

LEE COUNTY NORTH CAROLINA

PREPARED BY THE
NORTH CAROLINA DEPARTMENT OF TRANSPORTATION
DIVISION OF HIGHWAYS - PLANNING AND RESEARCH BRANCH
IN COOPERATION WITH THE
U.S. DEPARTMENT OF TRANSPORTATION
FEDERAL HIGHWAY ADMINISTRATION



10,000 FOOT GRID BASED ON NORTH CAROLINA PLANE COORDINATE SYSTEM
POLYCONIC PROJECTION