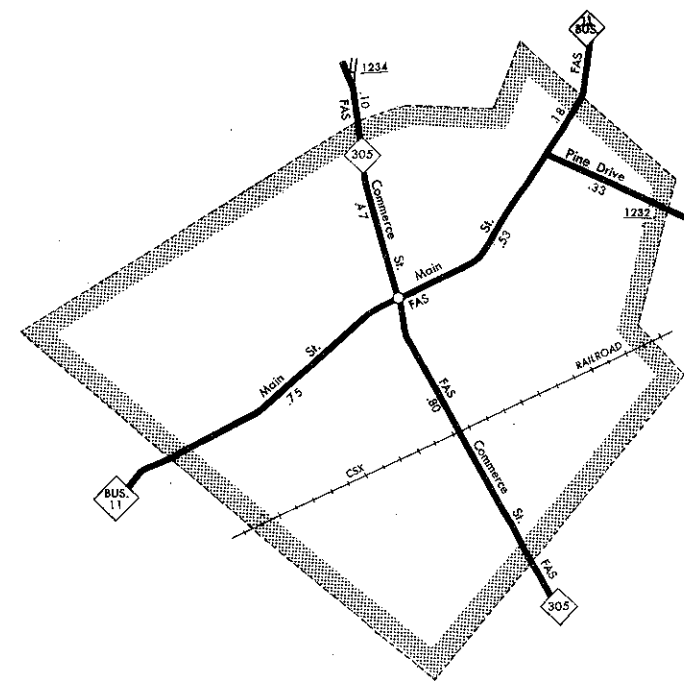
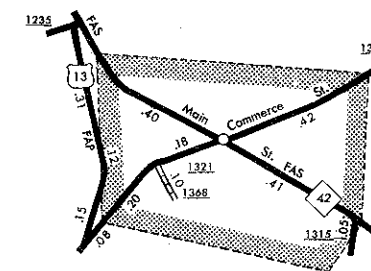


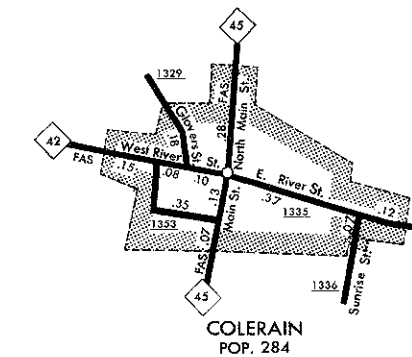
ROXOBEL
POP. 278



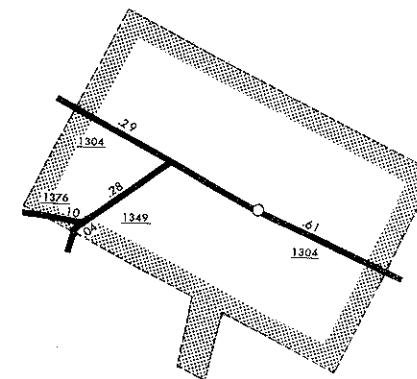
AULANDER
POP. 1,214



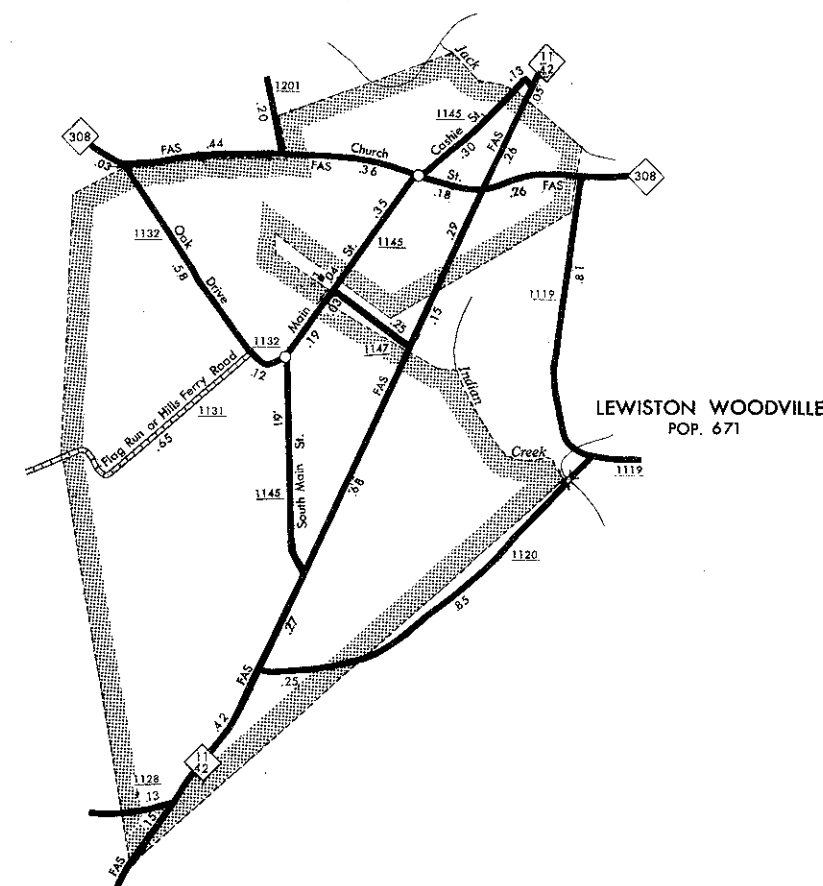
POWELLSVILLE
POP. 320



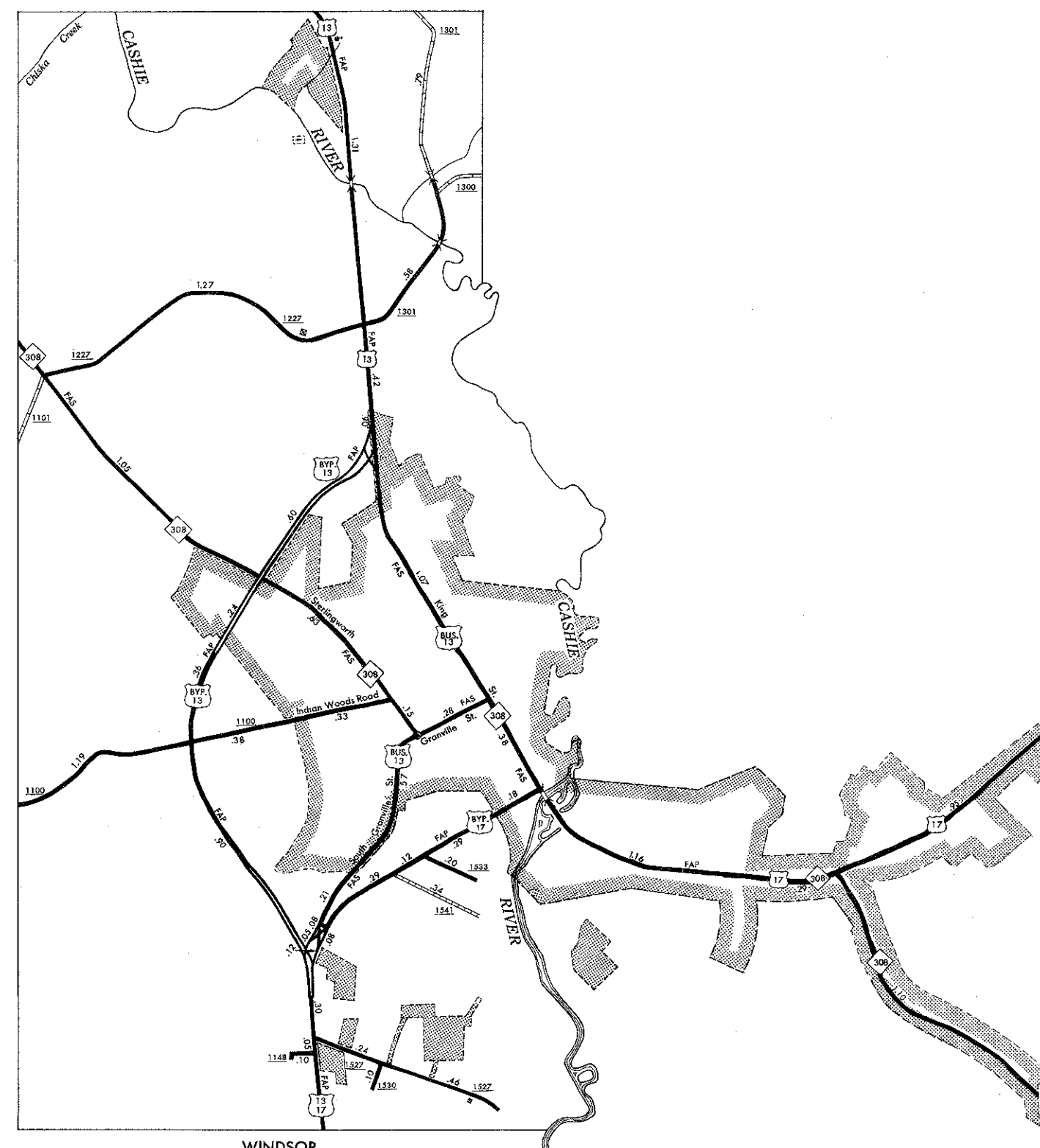
COLERAIN
POP. 284



ASKEWVILLE
POP. 227

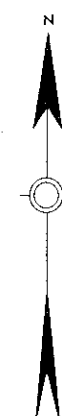


LEWISTON WOODVILLE
POP. 671



WINDSOR
POP. 2,126

REVISED
1-1-62
1-1-64
1-1-66
1-1-68
1-1-70
1-1-72
1-1-74
1-1-76
1-1-78
1-1-80
1-1-82
1-1-84
1-1-86
1-1-88

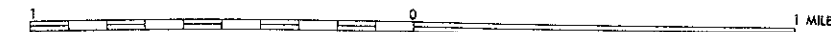


ENLARGED MUNICIPAL AND SUBURBAN AREAS

BERTIE COUNTY NORTH CAROLINA

PREPARED BY THE
NORTH CAROLINA DEPARTMENT OF TRANSPORTATION
DIVISION OF HIGHWAYS—PLANNING AND RESEARCH BRANCH
IN COOPERATION WITH THE
U.S. DEPARTMENT OF TRANSPORTATION
FEDERAL HIGHWAY ADMINISTRATION

SCALE



POLYCONIC PROJECTION

SHEET 2 OF 2