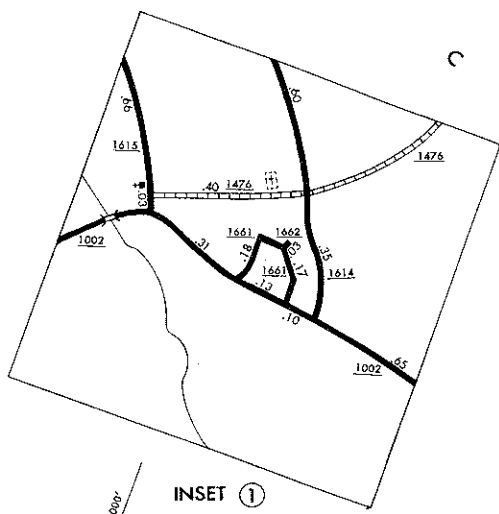


- LEGEND**
- PRIMITIVE OR UNIMPROVED ROAD
 - GRAVEL OR DIRT ROAD
 - SOIL GRAVEL OR STONE SURFACED ROAD
 - HARD SURFACED ROAD
 - 4 LANE UNIMPROVED HIGHWAY
 - DIVIDED HIGHWAY
 - HIGHWAY WITH FRONTAGE ROADS
 - FUEL CONTROL ACCESS
 - FEDERAL AID INTERSTATE ROAD
 - FEDERAL AID PRIMARY ROAD
 - FEDERAL AID SECONDARY ROAD
 - FEDERAL AID URBAN
 - NON-SYSTEM ROAD
 - PROJECTED LOCATION
 - INTERSECTION DISTANCE
 - TRAFFIC CIRCLE
 - HIGHWAY INTERCHANGE
 - DETAILED HIGHWAY INTERCHANGE
 - INTERSTATE HIGHWAY
 - U.S. NUMBERED HIGHWAY
 - U.S. NUMBERED BICYCLE ROUTE
 - N.C. NUMBERED HIGHWAY
 - SECONDARY ROAD NUMBER
 - UNDERGROUND CABLE
 - RAILROAD, ANY NUMBER OF TRACKS
 - RAILROAD, ANY NUMBER OF TRACKS, USED BY SINGLE OPERATING COMPANY
 - RAILROAD, ANY NUMBER OF TRACKS, USED BY MORE THAN ONE OPERATING COMPANY ON SAME OR ADJACENT RIGHTS-OF-WAY
 - RAILROAD STATION
 - CAROL CROSSING
 - UNDERPASS
 - OVERPASS
 - RAILROAD TUNNEL
 - ARMY, NAVY, OR MARINE CORPS FIELD
 - CORPUS OF MUNICIPAL AIRPORT
 - MARKED AUXILIARY FIELD
 - HANGAR ON FIELD, IN SYMBOL
 - FREE OR TOLL BRIDGE
 - LIGHTHOUSE
 - COAST GUARD STATION
 - CANAL
 - NARROW STREAM
 - WIDE STREAM
 - DAM WITH LOCK
 - DAM
 - RESERVOIR, POND, OR LAKE
 - PERMANENT PEAK, MINERALS
 - INSIDE-ICE ELEVATION
 - ROAD THROUGH MOUNTAIN PASS
 - HIGHWAY BRIDGE, OVER 20 FT.
 - DRAW SPAN ON BRIDGE
 - HIGHWAY TUNNEL
 - FOOD
 - STATE LINE
 - COUNTY B.M.
 - CITY LIMITS
 - RESERVATION OR PARK BOUNDARY
 - INSET AREA
 - UNINCORPORATED CENSUS
 - UNINCORPORATED PLACE
 - COUNTY SEAT
 - OTHER TOWNS AND VILLAGES
 - TRANSMISSION STATION
 - INCORPORATED CITY OR VILLAGE (GENERALIZED)
 - SCHOOL
 - CHURCH
 - CHURCH WITH CEMETERY
 - CEMETERY
 - HOSPITAL
 - CORRECTIONAL OR PENAL INSTIT.
 - HIGHWAY GARAGE OR HANDL. YARD
 - HIGHWAY DIV. OR DIST. OFFICE
 - PAVED STATION
 - WEIGHT STATION
 - BEST AREA
 - INCORPORATED - SMALL HISTORICAL SITE

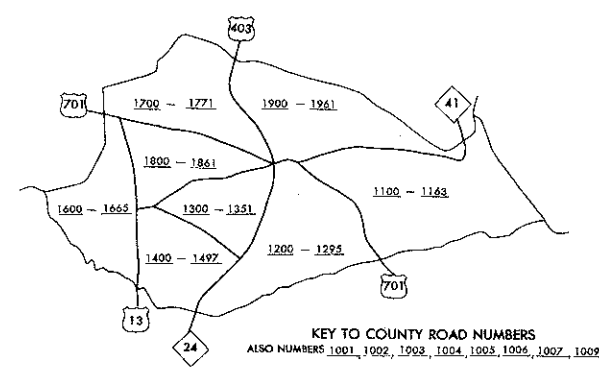
COPY OF THE MAP MAY BE MADE
TO THE PUBLIC AT A NOMINAL COST.
MAPS, N.C. DEPARTMENT OF TRANSPORTATION
ADDRESS:
RALEIGH, NORTH CAROLINA, 27601

REVISED

1-1-42
1-1-44
1-1-46
1-1-48
1-1-50
1-1-52
1-1-54
1-1-56
1-1-58
1-1-60
1-1-62
1-1-64



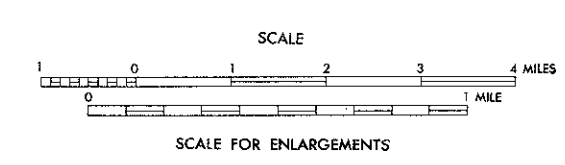
NOTE: MAP INCLUDES ONLY STATE MAINTAINED ROADS
OR IMPORTANT NON-SYSTEM ROADS.
MILEAGE NOT SHOWN ON FRONTAGE ROADS.
ROADS SHOWN AS OF JAN. 1, 1964.



SAMPSON COUNTY

NORTH CAROLINA

PREPARED BY THE
NORTH CAROLINA DEPARTMENT OF TRANSPORTATION
DIVISION OF HIGHWAYS—PLANNING AND RESEARCH BRANCH
IN COOPERATION WITH THE
U.S. DEPARTMENT OF TRANSPORTATION
FEDERAL HIGHWAY ADMINISTRATION



10,000 FOOT GRID BASED ON NORTH CAROLINA PLANE COORDINATE SYSTEM
POLYCONIC PROJECTION