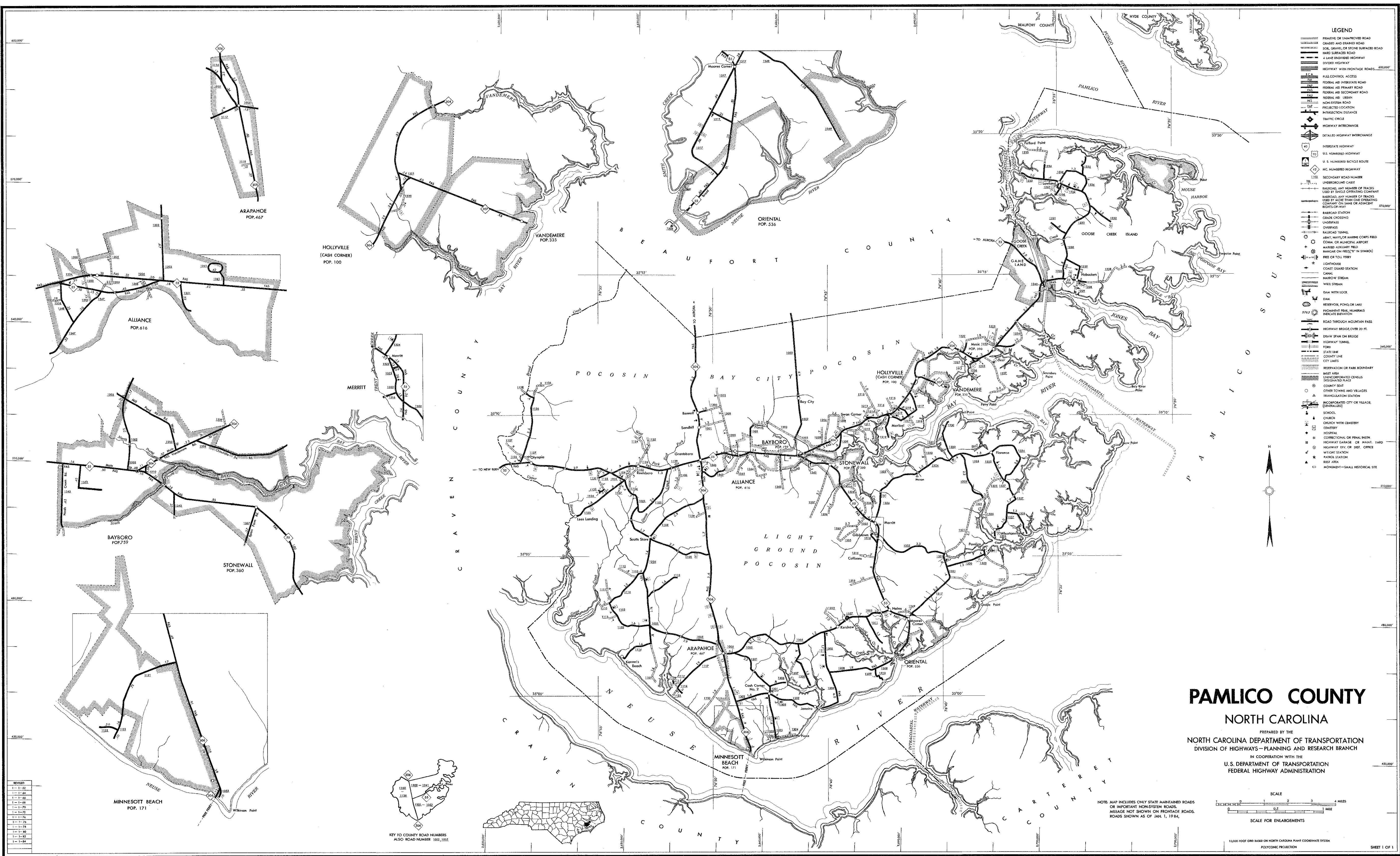


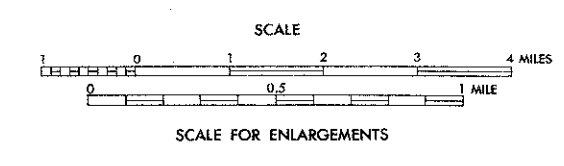
COPIES OF THIS MAP ARE AVAILABLE  
TO THE PUBLIC AT A NOMINAL COST.  
ADDRESS: DIVISION OF HIGHWAYS  
RALEIGH, NORTH CAROLINA 27601

REVISION
1-1-52
1-1-54
1-1-56
1-1-58
1-1-60
1-1-62
1-1-64
1-1-66
1-1-68
1-1-70
1-1-72
1-1-74
1-1-76
1-1-78
1-1-80
1-1-82
1-1-84



# PAMLICO COUNTY NORTH CAROLINA

PREPARED BY THE  
NORTH CAROLINA DEPARTMENT OF TRANSPORTATION  
DIVISION OF HIGHWAYS - PLANNING AND RESEARCH BRANCH  
IN COOPERATION WITH THE  
U.S. DEPARTMENT OF TRANSPORTATION  
FEDERAL HIGHWAY ADMINISTRATION



NOTE: MAP INCLUDES ONLY STATE MAINTAINED ROADS  
OR IMPORTANT NON-SYSTEM ROADS.  
MILEAGE NOT SHOWN ON FRONTAGE ROADS.  
ROADS SHOWN AS OF JAN. 1, 1984.