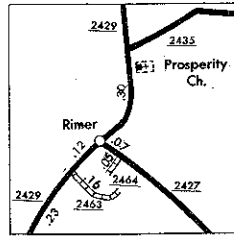
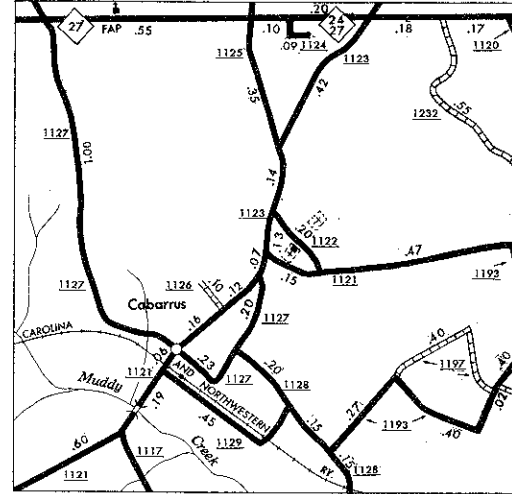
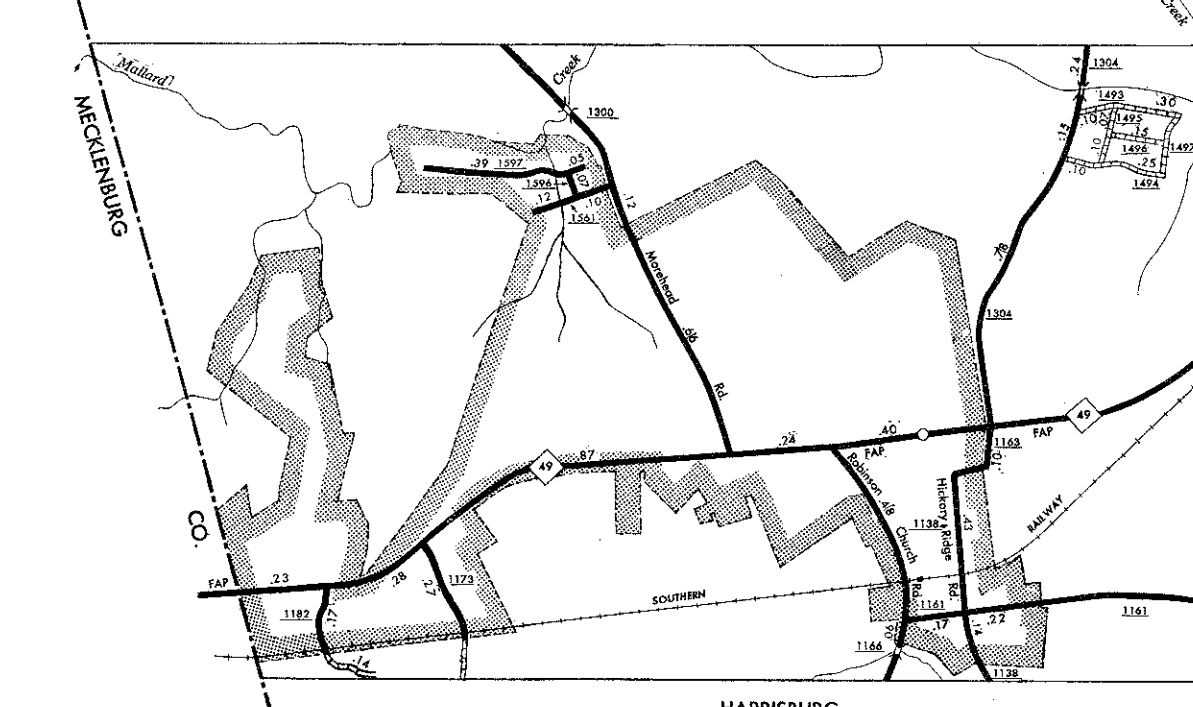
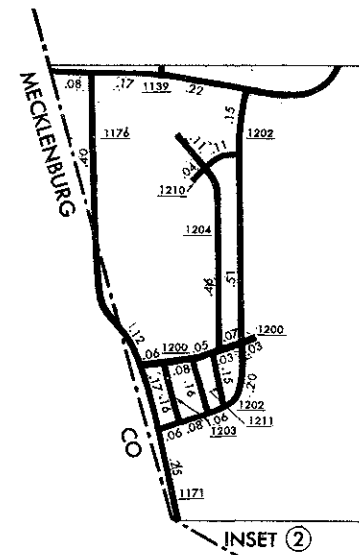


COPIES OF THIS MAP ARE AVAILABLE  
TO THE PUBLIC AT A NOMINAL COST  
ADDRESS: MAPS, N.C. DEPARTMENT OF TRANSPORTATION  
RALEIGH, NORTH CAROLINA 27601

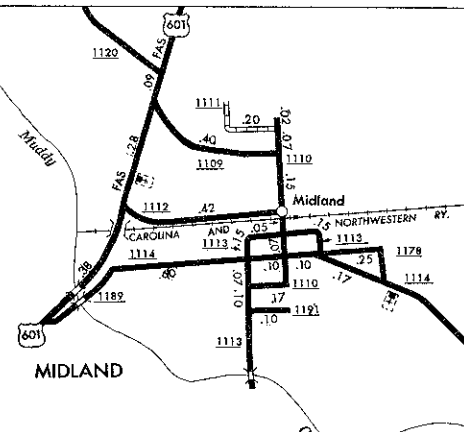
REVISED
1-1-67
1-1-68
1-1-69
1-1-70
1-1-71
1-1-72
1-1-73
1-1-74
1-1-75
1-1-76
1-1-77
1-1-78
1-1-79
1-1-80
1-1-81
1-1-82
1-1-83
1-1-84

CABARRUS



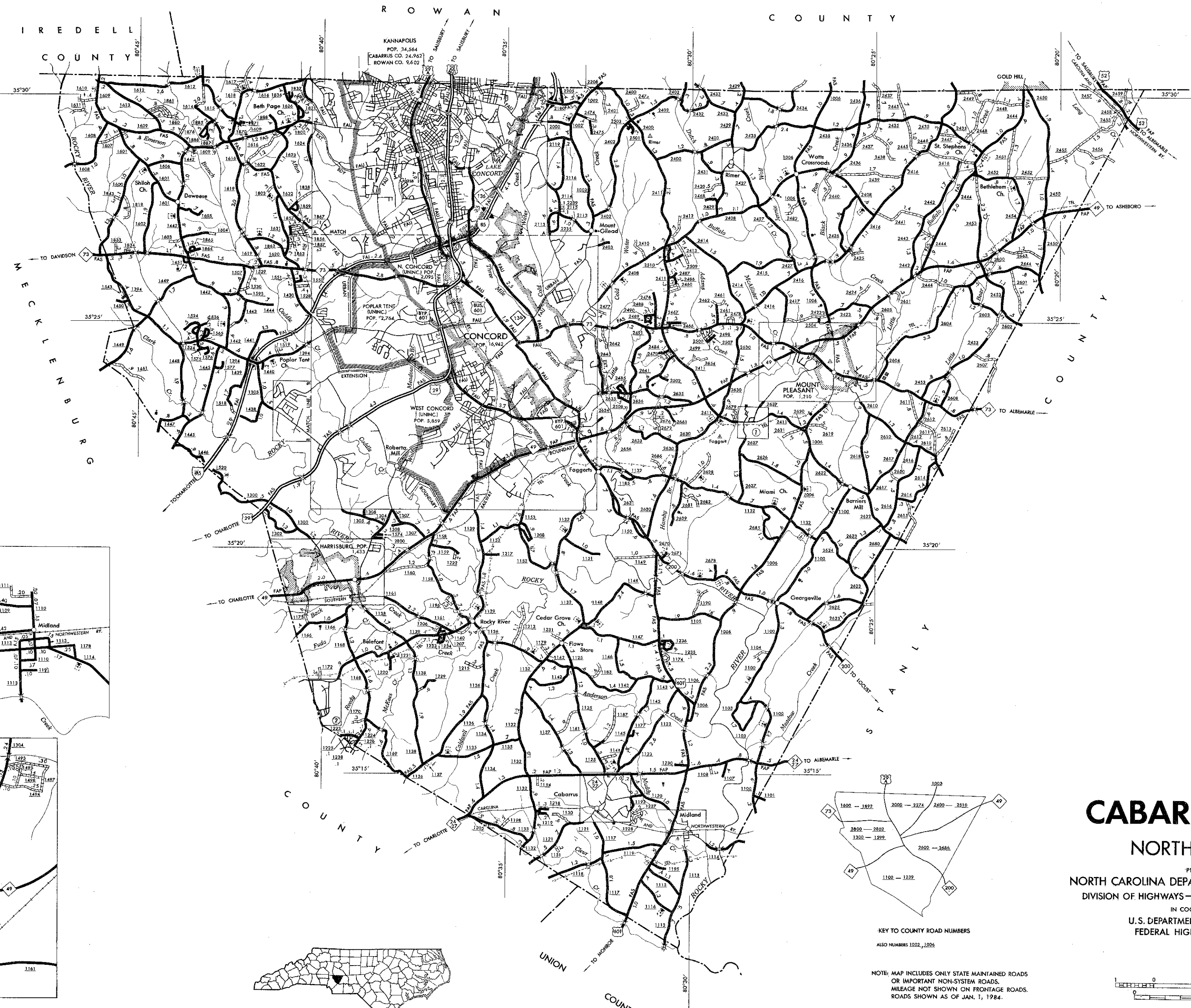
RIMER

CABARRUS



MIDLAND

HARRISBURG  
POP. 1,433



# CABARRUS COUNTY NORTH CAROLINA

PREPARED BY THE  
NORTH CAROLINA DEPARTMENT OF TRANSPORTATION  
DIVISION OF HIGHWAYS—PLANNING AND RESEARCH BRANCH  
IN COOPERATION WITH THE  
U.S. DEPARTMENT OF TRANSPORTATION  
FEDERAL HIGHWAY ADMINISTRATION



KEY TO COUNTY ROAD NUMBERS  
ALSO NUMBERS 1000, 1000

NOTE: MAP INCLUDES ONLY STATE MAINTAINED ROADS  
OR IMPORTANT NON-STATE MAINTAINED ROADS.  
MILEAGE NOT SHOWN ON FRONTAGE ROADS.  
ROADS SHOWN AS OF JAN. 1, 1984.

- LEGEND
- FRONTAGE OR UNIMPROVED ROAD
  - GRAVEL OR DRAINED ROAD
  - SOIL, GRAVEL, OR STONE SURFACED ROAD
  - HARD SURFACED ROAD
  - 4 LANE UNDIVIDED HIGHWAY
  - DIVIDED HIGHWAY
  - HIGHWAY WITH FRONTAGE ROADS
  - RAIL CONTROL, ACCESS
  - FEDERAL AID INTERSTATE ROAD
  - FEDERAL AID PRIMARY ROAD
  - FEDERAL AID SECONDARY ROAD
  - FEDERAL AID USHWAY
  - NON-STATE ROAD
  - PROJECTED LOCATION
  - INTERSECTION DISTANCE
  - TRAFFIC CIRCLE
  - HIGHWAY INTERCHANGE
  - DETAILED HIGHWAY INTERCHANGE
  - INTERSTATE HIGHWAY
  - U.S. NUMBERED HIGHWAY
  - U.S. NUMBERED BICYCLE ROUTE
  - NC. NUMBERED HIGHWAY
  - SECONDARY ROAD NUMBER
  - UNDERGROUND CABLE
  - RAILROAD, ANY NUMBER OF TRACKS
  - USED BY BRIDGE ENGINEERING COMPANY
  - RAILROAD, ANY NUMBER OF TRACKS
  - USED BY POWER THAN ONE OPERATING
  - COMPANY OR SAME OR ADJACENT
  - RIGHTS-OF-WAY
  - RAILROAD STATION
  - GRADE CROSSING
  - UNDERPASS
  - OVERPASS
  - RAILROAD TUNNEL
  - ARMY, NAVY, OR MARINE CORPS FIELD
  - CORRAL OR AIRCRAFT AIRPORT
  - MARKED AIRCRAFT FIELD
  - HANGAR OR FIELD "B" IN SYMBOL
  - FIRE OR TOLL TOWER
  - LIGHTHOUSE
  - COAST GUARD STATION
  - CANAL
  - NARROW STREAM
  - WIDE STREAM
  - DAK WITH LOCK
  - 650,000
  - RESERVOIR, POND, OR LAKE
  - PERMANENT PRAIRIE, NUMBERS
  - INDICATE ELEVATION
  - ROAD THROUGH MOUNTAIN PASS
  - HIGHWAY BRIDGE, OVER 20 FT.
  - DRAW SPAN ON BRIDGE
  - HIGHWAY TUNNEL
  - POW
  - STATE LINE
  - COUNTY LINE
  - CITY LIMITS
  - RESERVATION OR PARK BOUNDARY
  - INSET AREA
  - UNINCORPORATED CENSUS
  - DESIGNATED PLACE
  - COUNTY SEAT
  - OTHER TOWNS AND VILLAGES
  - TRANSLATION STATION
  - UNINCORPORATED CITY OR VILLAGE
  - (GENERALIZED)
  - SCHOOL
  - CHURCH
  - CHURCH WITH CEMETERY
  - CEMETERY
  - HOSPITAL
  - CORRECTIONAL OR PENAL INSTITUTION
  - HIGHWAY GARAGE OR MAINT. YARD
  - HIGHWAY DIV. OR DIST. OFFICE
  - WEIGHT STATION
  - PATCH STATION
  - REST AREA
  - MONUMENT—SMALL HISTORICAL SITE
  - 650,000

