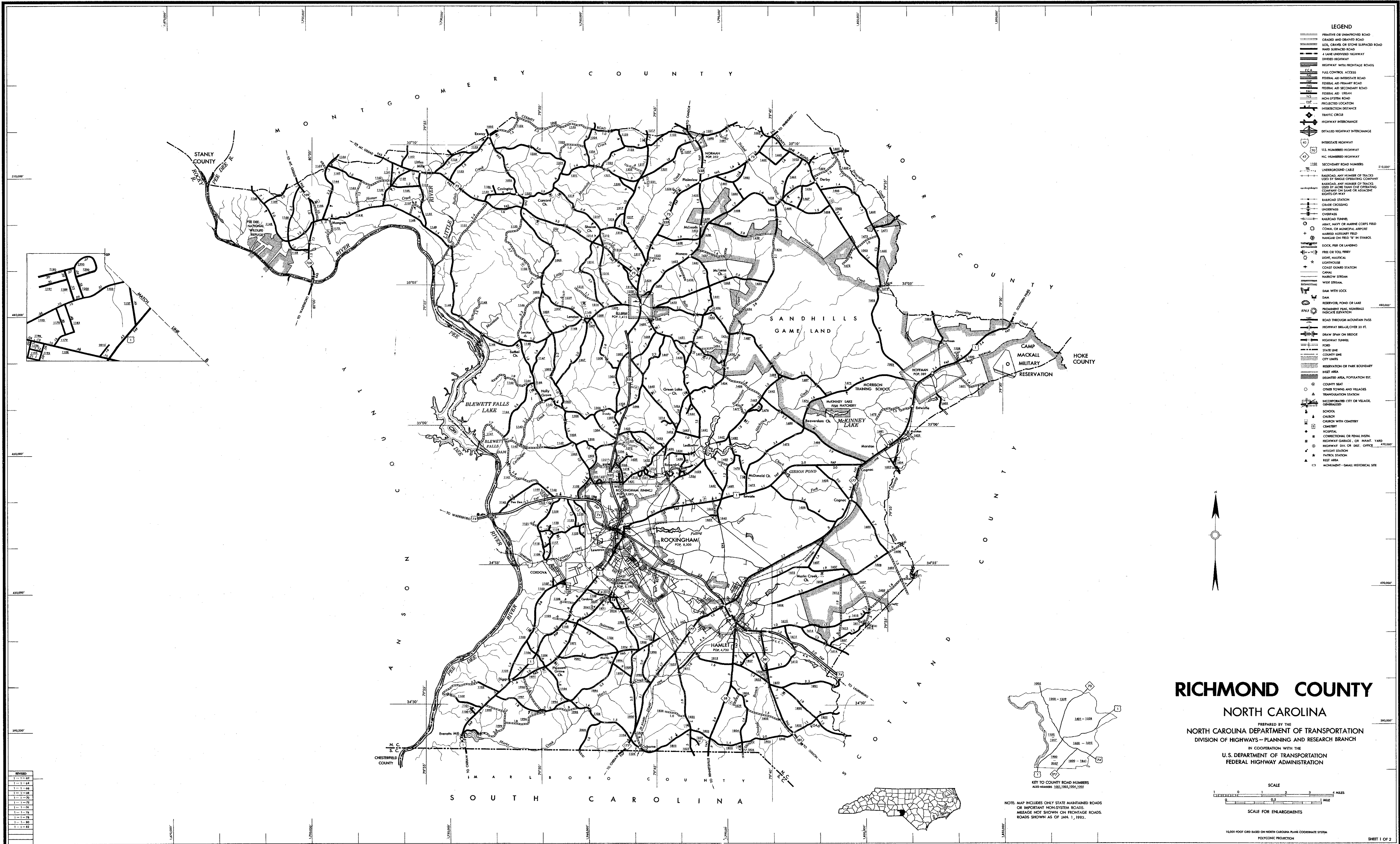


COPIES OF THIS MAP ARE AVAILABLE
TO THE PUBLIC AT A NOMINAL COST
FROM THE DIVISION OF HIGHWAYS
RAILROAD, NORTH CAROLINA, 27611

RICHMOND



- LEGEND**
- PRIMITIVE OR UNIMPROVED ROAD
 - GRADED AND DRAINED ROAD
 - SOIL, GRAVEL OR STONE SURFACED ROAD
 - HARD SURFACED ROAD
 - 4 LANE UNIMPROVED HIGHWAY
 - DIVIDED HIGHWAY
 - HIGHWAY WITH FRONTAGE ROADS
 - RAILROAD ACCESS
 - FEDERAL AID INTERSTATE ROAD
 - FEDERAL AID PRIMARY ROAD
 - FEDERAL AID SECONDARY ROAD
 - FEDERAL AID (USDA)
 - NON-SYSTEM ROAD
 - PROJECTED LOCATION
 - INTERSECTION DISTANCE
 - TRAFFIC CIRCLE
 - HIGHWAY INTERCHANGE
 - DETAILED HIGHWAY INTERCHANGE
 - INTERSTATE HIGHWAY
 - U.S. NUMBERED HIGHWAY
 - N.C. NUMBERED HIGHWAY
 - SECONDARY ROAD NUMBER
 - UNDERGROUND CABLE
 - RAILROAD, ANY NUMBER OF TRACKS
USED BY SINGLE OPERATING COMPANY
 - RAILROAD, ANY NUMBER OF TRACKS
USED BY MORE THAN ONE OPERATING
COMPANY ON SAME OR ADJACENT
RIGHTS-OF-WAY
 - RAILROAD STATION
 - GRADE CROSSING
 - UNDERPASS
 - OVERPASS
 - RAILROAD TUNNEL
 - ARMY, NAVY, OR MARINE CORPS FIELD
 - CIVIL OR MILITARY AIRPORT
 - MARKED AIRFIELD FIELD
 - HANDLARK ON FIELD "IN" STAKE
 - DOCK, PIER OR LANDING
 - PIER OR TOLL FERRY
 - LIGHT, NAUTICAL
 - LIGHTHOUSE
 - COAST GUARD STATION
 - CANAL
 - NARROW STREAM
 - WIDE STREAM
 - DAM WITH LOCK
 - DAM
 - RESERVOIR, POND OR LAKE
 - POWDERMILL PEAK, NUMBERS
INDICATE ELEVATION
 - ROAD THROUGH MOUNTAIN PASS
 - HIGHWAY BRIDGE OVER 20 FT.
 - BRIDGE SPAN ON BRIDGE
 - HIGHWAY TUNNEL
 - FORD
 - STATE LINE
 - COUNTY LINE
 - CITY LIMITS
 - RESERVATION OR PARK BOUNDARY
 - INLET AREA
 - DEVELOPED AREA, POPULATION EST.
 - COUNTY SEAT
 - OTHER TOWNS AND VILLAGES
 - TRIANGULATION STATION
 - INCORPORATED CITY OR VILLAGE
CORPORATE
 - SCHOOL
 - CHURCH
 - CHURCH WITH CEMETERY
 - CEMETERY
 - HOSPITAL
 - CONVENTION OR FERAL INSTN.
 - HIGHWAY GARAGE, OR MAINT. YARD
 - HIGHWAY DIA. OR INST. CORNER (200,000)
 - WEIGHT STATION
 - PATROL STATION
 - REST AREA
 - MONUMENT—SMALL HISTORICAL SITE

RICHMOND COUNTY

NORTH CAROLINA

PREPARED BY THE
NORTH CAROLINA DEPARTMENT OF TRANSPORTATION
DIVISION OF HIGHWAYS—PLANNING AND RESEARCH BRANCH
IN COOPERATION WITH THE
U.S. DEPARTMENT OF TRANSPORTATION
FEDERAL HIGHWAY ADMINISTRATION

