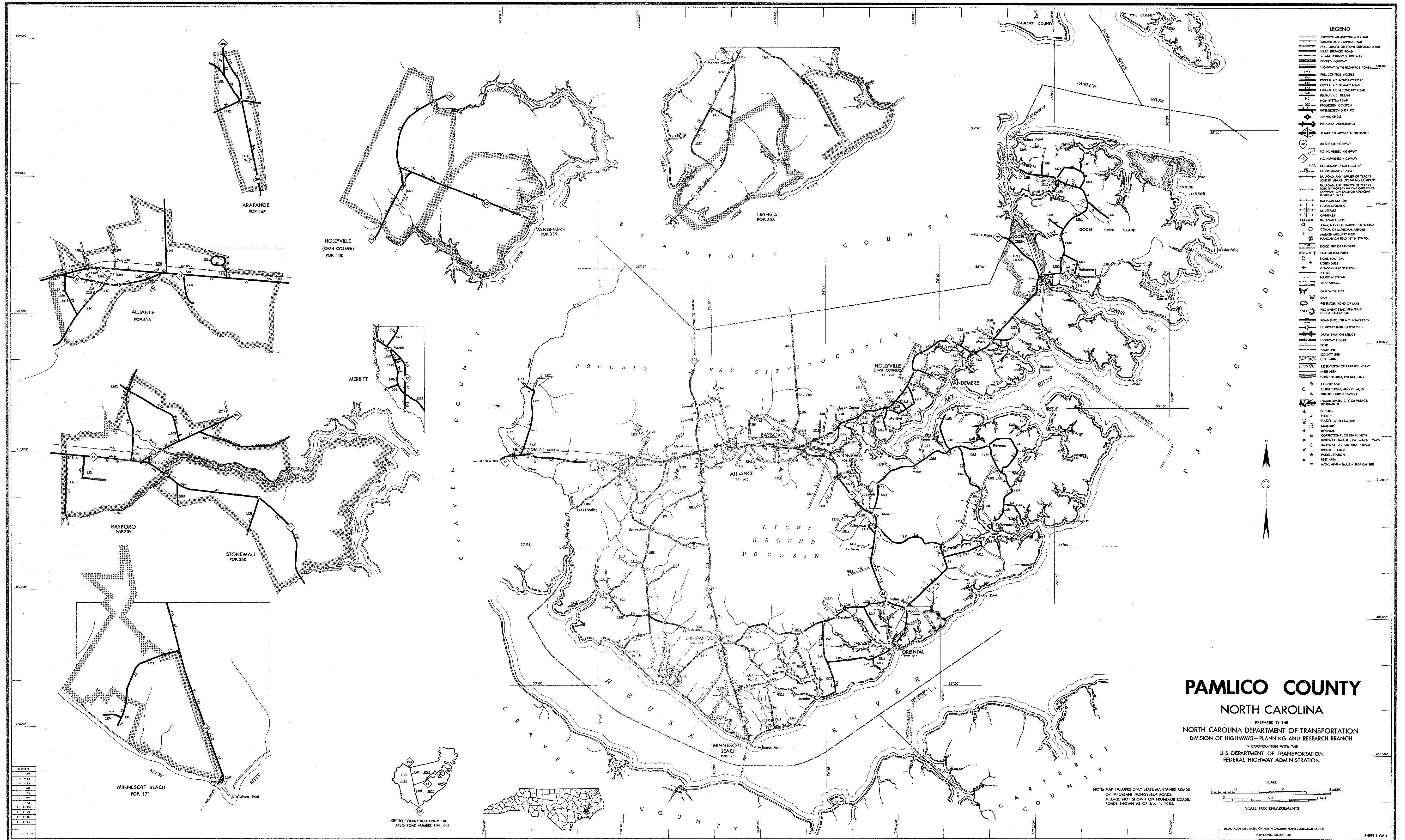
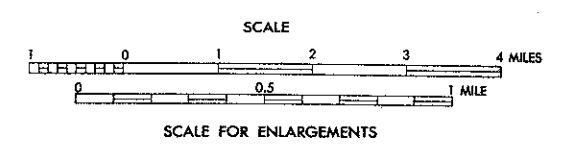


COPIES OF THIS MAP ARE AVAILABLE TO THE PUBLIC AT THE FOLLOWING ADDRESSES: MAPS, N.C. DEPARTMENT OF TRANSPORTATION, DIVISION OF HIGHWAYS, 2701 BAYVIEW DRIVE, RALEIGH, N.C. 27601



- LEGEND**
- PRIMITIVE OR UNIMPROVED ROAD
 - GRAVEL AND DRAINED ROAD
 - PAV. GRAVEL OR STONE SURFACED ROAD
 - PAVED SURFACED ROAD
 - A LANE UNIMPROVED HIGHWAY
 - HYDRO HIGHWAY
 - HIGHWAY WITH FRONTAGE ROADS, 200-500'
 - FULL CONTROL ACCESS
 - FEDERAL AID INTERSTATE ROAD
 - FEDERAL AID PRIMARY ROAD
 - FEDERAL AID SECONDARY ROAD
 - FEDERAL AID URBAN
 - NON-INTERSTATE ROAD
 - PROTECTED LOCATION
 - INTERSECTION DISTANCE
 - TRAFFIC CIRCLE
 - HIGHWAY INTERCHANGE
 - DETAILED HIGHWAY INTERCHANGE
 - INTERSTATE HIGHWAY
 - U.S. NUMBERED HIGHWAY
 - N.C. NUMBERED HIGHWAY
 - SECONDARY ROAD NUMBER
 - UNDERGROUND CASE
 - RAILROAD, ANY NUMBER OF TRACKS, USED BY SINGLE OPERATING COMPANY
 - RAILROAD, ANY NUMBER OF TRACKS, USED BY MORE THAN ONE OPERATING COMPANY ON SAME OR ADJACENT RIGHTS-OF-WAY
 - RAILROAD STATION
 - GRADE CROSSING
 - UNDERPASS
 - OVERPASS
 - RAILROAD TUNNEL
 - ARMY, NAVY OR MARINE CORPS FIELD
 - CORAL OR MUNICIPAL AIRPORT
 - RAILROAD AIRCRAFT FIELD
 - HANGAR ON FIELD "B" IN SYMBOL
 - DOCK, PIER OR LANDING
 - FIRE OR TOLL TOWER
 - LIGHT, NAUTICAL
 - LIGHTHOUSE
 - COAST GUARD STATION
 - CAW
 - NARROW STREAM
 - WIDE STREAM
 - DAM WITH LOCK
 - DAM
 - RESERVOIR, POND OR LAKE
 - PROMINENT PEAK, NUMERALS INDICATE ELEVATION
 - ROAD THROUGH MOUNTAIN PASS
 - HIGHWAY BRIDGE, OVER 50 FT.
 - DRAW SPAN ON BRIDGE
 - HIGHWAY TUNNEL
 - FORD
 - STATE LINE
 - COUNTY LINE
 - CITY LIMITS
 - RESERVATION OR PARK BOUNDARY
 - POST AREA
 - REGISTERED AREA, POPULATION EST.
 - COUNTY SEAT
 - OTHER TOWNS AND VILLAGES
 - TRANSPORTATION STATION
 - INCORPORATED CITY OR VILLAGE, GENERALIZED
 - SCHOOL
 - CHURCH
 - CHURCH WITH CEMETERY
 - CEMETERY
 - HOSPITAL
 - CORRECTIONAL OR PRISON INSTITUTION
 - HIGHWAY GARAGE, OR WAREHOUSE
 - HIGHWAY DIV. OR DIST. OFFICE
 - WEIGH STATION
 - PATROL STATION
 - REST AREA
 - MONUMENT—SMALL HISTORICAL SITE

PAMLICO COUNTY
NORTH CAROLINA
PREPARED BY THE
NORTH CAROLINA DEPARTMENT OF TRANSPORTATION
DIVISION OF HIGHWAYS—PLANNING AND RESEARCH BRANCH
IN COOPERATION WITH THE
U.S. DEPARTMENT OF TRANSPORTATION
FEDERAL HIGHWAY ADMINISTRATION



NOTE: MAP INCLUDES ONLY STATE MAINTAINED ROADS OR IMPORTANT NON-STATE MAINTAINED ROADS. MILEAGE NOT SHOWN ON FRONTAGE ROADS. ROADS SHOWN AS OF JAN. 1, 1962.

