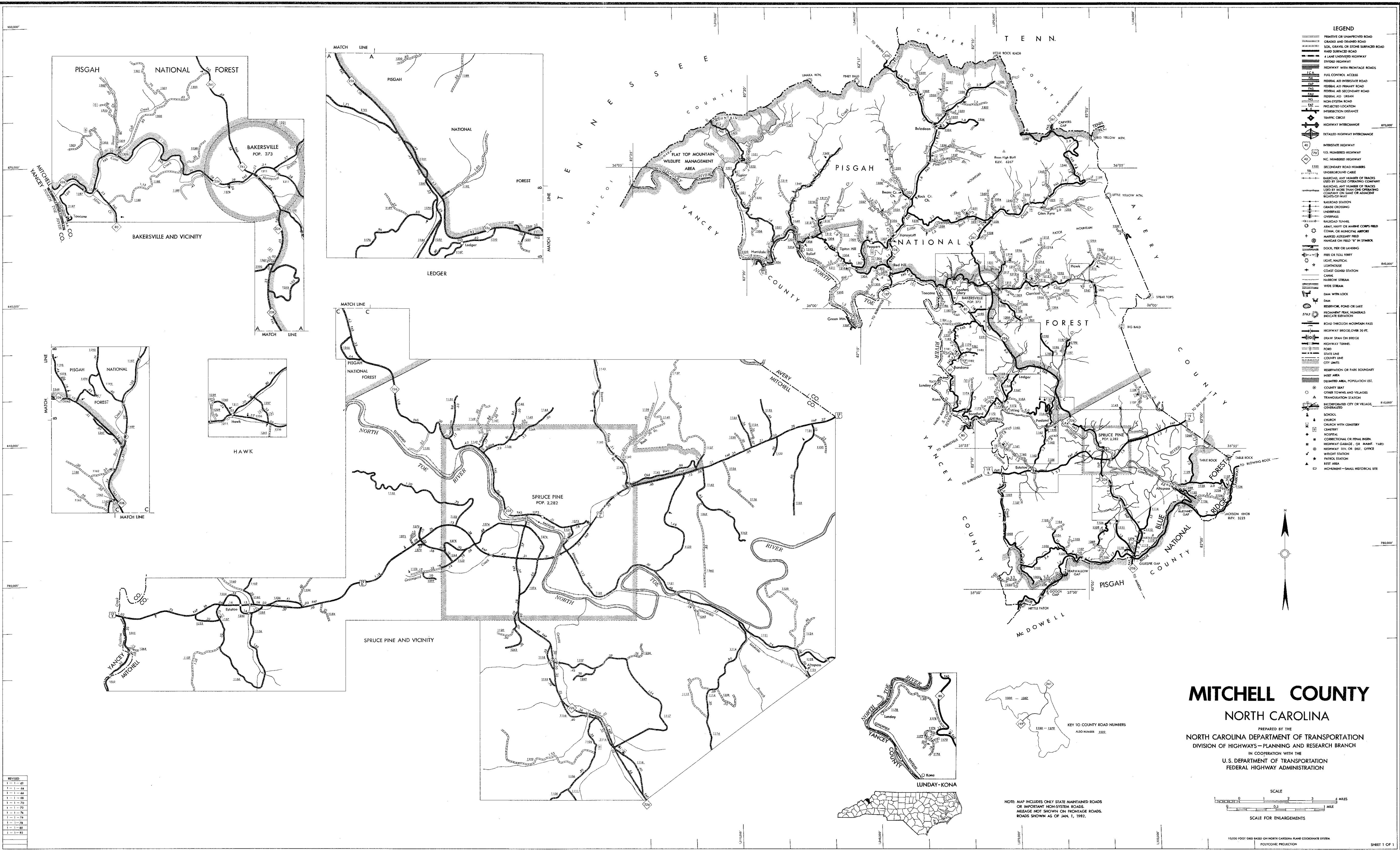


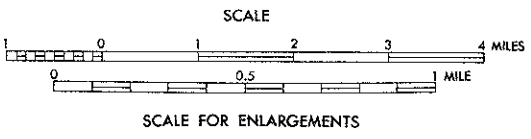
COPIES OF THIS MAP ARE AVAILABLE  
FOR PURCHASE AT A SPECIAL COST  
BY THE DIVISION OF TRANSPORTATION  
ADVISORY BOARD  
RALEIGH, NORTH CAROLINA, 27611

REVISION
1 - 11-65
2 - 11-66
3 - 11-66
4 - 11-66
5 - 11-66
6 - 11-66
7 - 11-66
8 - 11-66
9 - 11-66
10 - 11-66
11 - 11-66
12 - 11-66
13 - 11-66
14 - 11-66
15 - 11-66
16 - 11-66
17 - 11-66
18 - 11-66
19 - 11-66
20 - 11-66
21 - 11-66
22 - 11-66
23 - 11-66
24 - 11-66
25 - 11-66
26 - 11-66
27 - 11-66
28 - 11-66
29 - 11-66
30 - 11-66
31 - 11-66
32 - 11-66
33 - 11-66
34 - 11-66
35 - 11-66
36 - 11-66
37 - 11-66
38 - 11-66
39 - 11-66
40 - 11-66
41 - 11-66
42 - 11-66
43 - 11-66
44 - 11-66
45 - 11-66
46 - 11-66
47 - 11-66
48 - 11-66
49 - 11-66
50 - 11-66
51 - 11-66
52 - 11-66
53 - 11-66
54 - 11-66
55 - 11-66
56 - 11-66
57 - 11-66
58 - 11-66
59 - 11-66
60 - 11-66
61 - 11-66
62 - 11-66
63 - 11-66
64 - 11-66
65 - 11-66
66 - 11-66
67 - 11-66
68 - 11-66
69 - 11-66
70 - 11-66
71 - 11-66
72 - 11-66
73 - 11-66
74 - 11-66
75 - 11-66
76 - 11-66
77 - 11-66
78 - 11-66
79 - 11-66
80 - 11-66
81 - 11-66
82 - 11-66
83 - 11-66
84 - 11-66
85 - 11-66
86 - 11-66
87 - 11-66
88 - 11-66
89 - 11-66
90 - 11-66
91 - 11-66
92 - 11-66
93 - 11-66
94 - 11-66
95 - 11-66
96 - 11-66
97 - 11-66
98 - 11-66
99 - 11-66
100 - 11-66



# MITCHELL COUNTY NORTH CAROLINA

PREPARED BY THE  
NORTH CAROLINA DEPARTMENT OF TRANSPORTATION  
DIVISION OF HIGHWAYS - PLANNING AND RESEARCH BRANCH  
IN COOPERATION WITH THE  
U.S. DEPARTMENT OF TRANSPORTATION  
FEDERAL HIGHWAY ADMINISTRATION



15,000 FOOT GRID BASED ON NORTH CAROLINA PLANE COORDINATE SYSTEM  
POLYCONIC PROJECTION