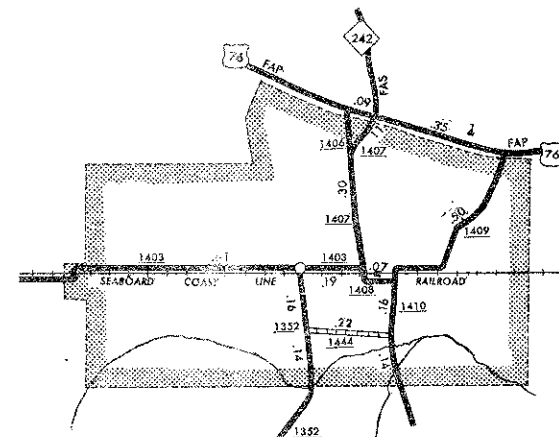
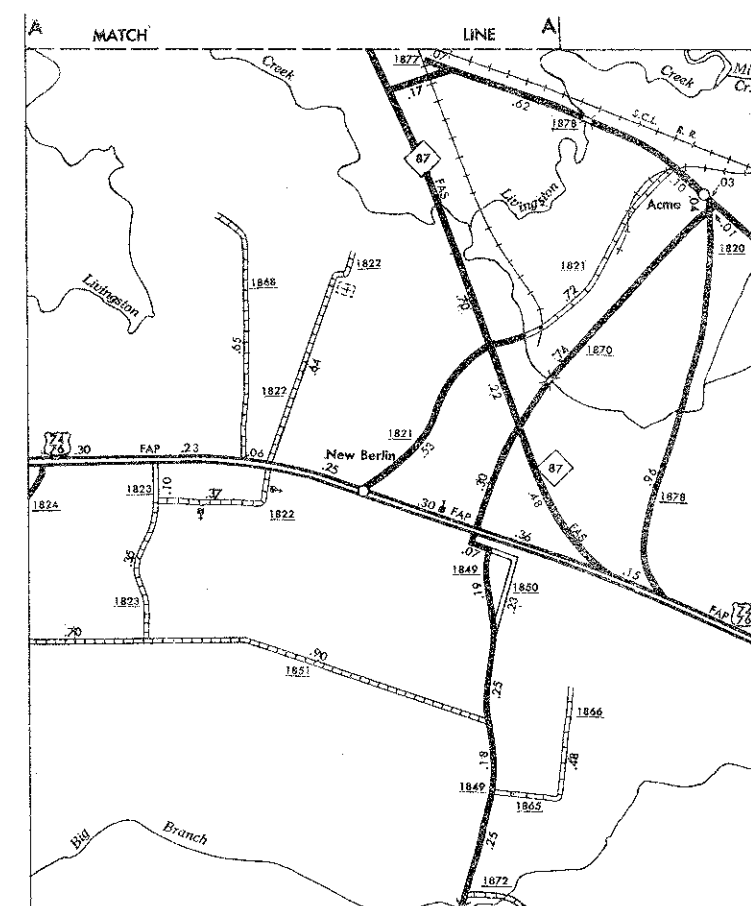


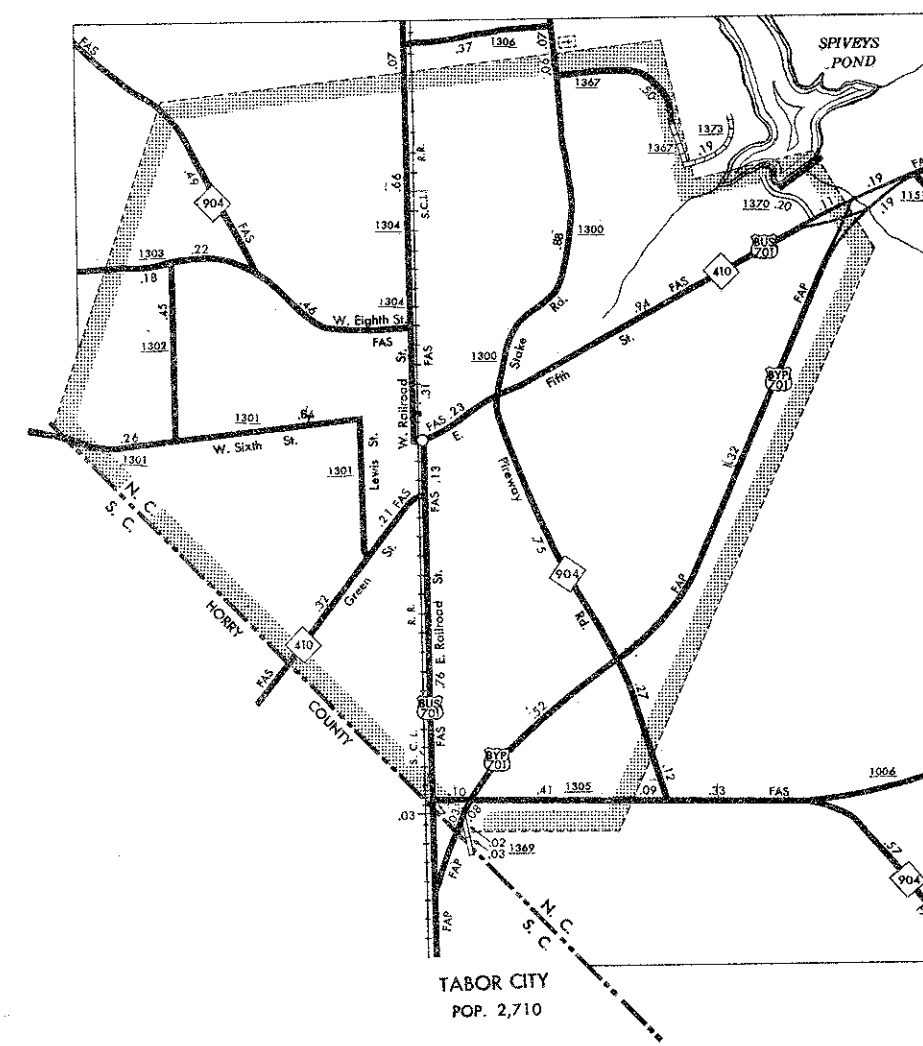
WISCONSIN



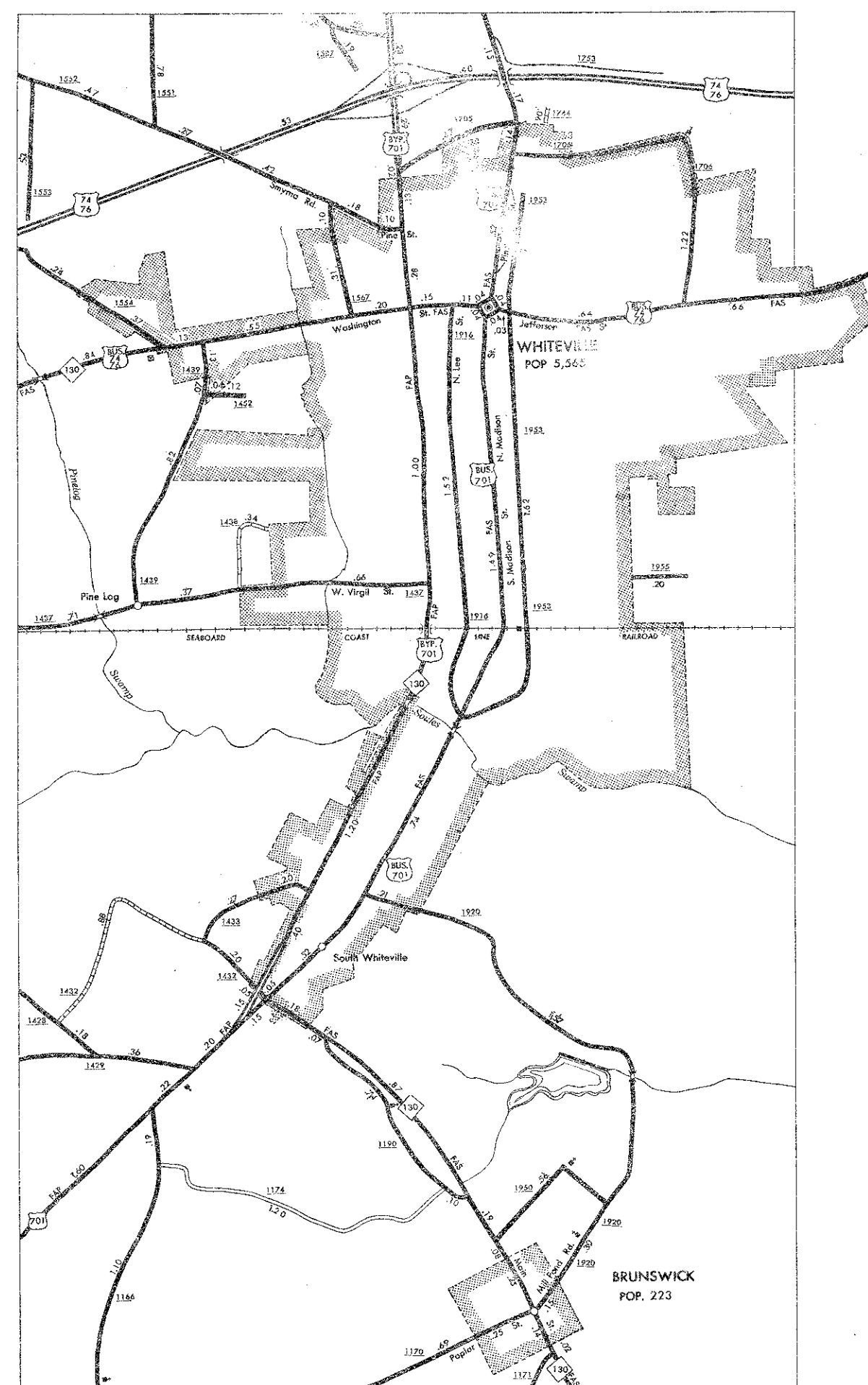
CERRO GORDO
POP. 295



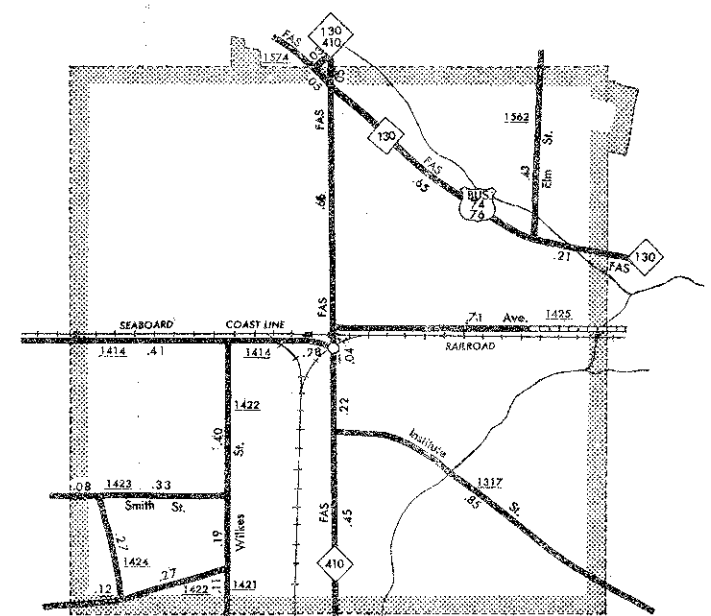
NEW BERLIN — ACME



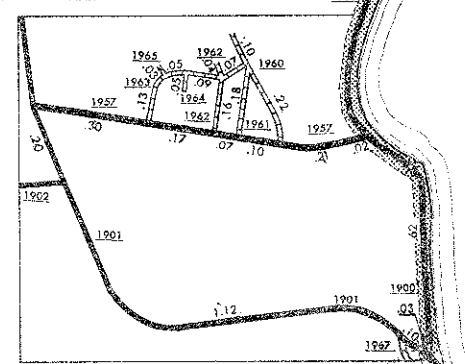
TABOR CITY
POP. 2,710



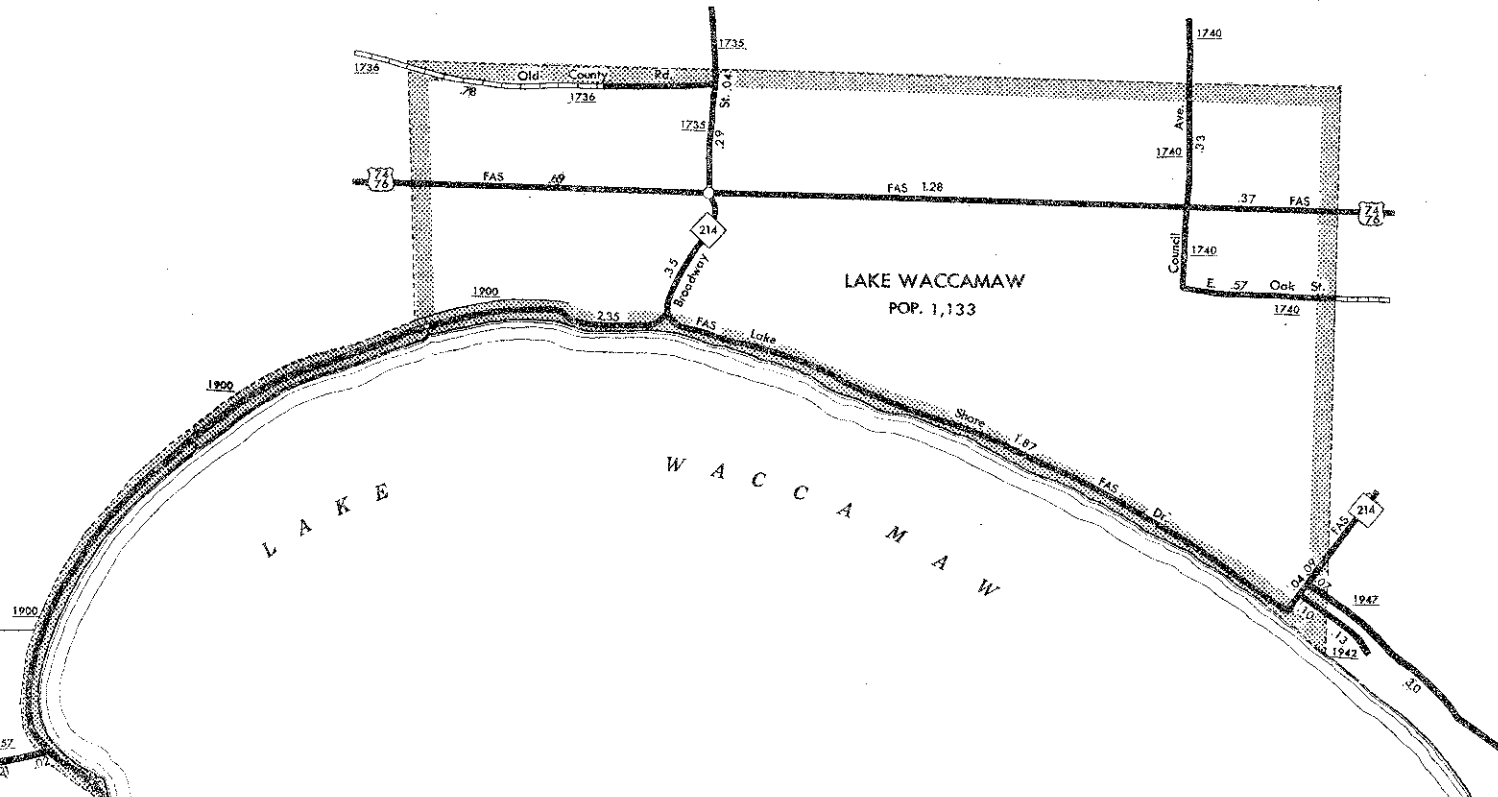
WHITEVILLE — BRUNSWICK



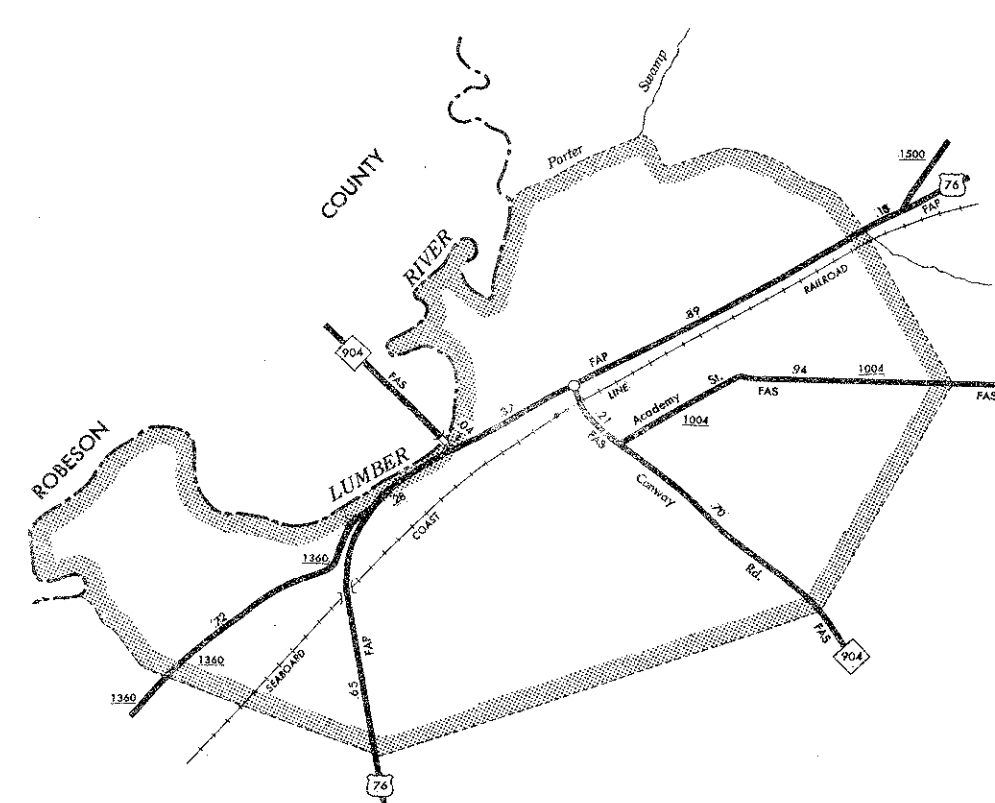
CHADBOURN
POP. 1,975



BOLTON
POP. 563

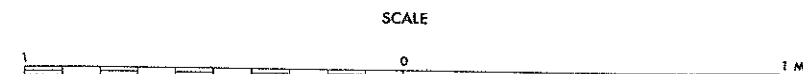


LAKE WACCAMAW
POP. 1,133



FAIR BLUFF
POP. 1,095

ENLARGED MUNICIPAL AND SUBURBAN AREAS
COLUMBUS COUNTY
NORTH CAROLINA
PREPARED BY THE
NORTH CAROLINA DEPARTMENT OF TRANSPORTATION
DIVISION OF HIGHWAYS—PLANNING AND RESEARCH BRANCH
IN COOPERATION WITH THE
U.S. DEPARTMENT OF TRANSPORTATION
FEDERAL HIGHWAY ADMINISTRATION



POLYCONIC PROJECTION

SHEET 2 OF 2

REVISION	DATE	BY	CHKD
1-1-61			
1-1-64			
1-1-66			
1-1-68			
1-1-70			
1-1-72			
1-1-74			
1-1-76			
1-1-78			
1-1-80			
1-1-82			