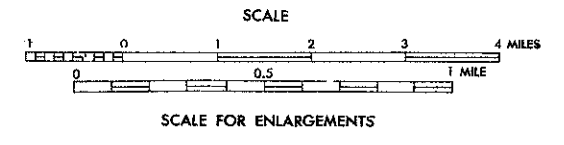


- LEGEND**
- PAVEMENT OR UNPAVEMENT ROAD
  - GRAVEL OR BRANDED ROAD
  - SOIL GRAVEL OR STONE SURFACED ROAD
  - PAVED SURFACED ROAD
  - 4 LANE UNPAVED HIGHWAY
  - DIVIDED HIGHWAY
  - HIGHWAY WITH FRONTAGE ROADS
  - PAID CONTROL ACCESS
  - FEDERAL AID INTERSTATE ROAD
  - FEDERAL AID PRIMARY ROAD
  - FEDERAL AID SECONDARY ROAD
  - FEDERAL AID USHWAY
  - NON-SYSTEM ROAD
  - PROJECTED LOCATION
  - INTERSECTION DISTANCE
  - TRAFFIC CIRCLE
  - HIGHWAY INTERCHANGE
  - DETAILED HIGHWAY INTERCHANGE
  - INTERSTATE HIGHWAY
  - U.S. NUMBERED HIGHWAY
  - N.C. NUMBERED HIGHWAY
  - SECONDARY ROAD NUMBER
  - UNDERGROUND CABLE
  - RAILROAD, ANY NUMBER OF TRACKS
  - RAILROAD, ANY NUMBER OF TRACKS USED BY SINGLE OPERATING COMPANY
  - RAILROAD, ANY NUMBER OF TRACKS USED BY MORE THAN ONE OPERATING COMPANY OR SAME OR ADJACENT RIGHTS-OF-WAY
  - RAILROAD STATION
  - GRADE CROSSING
  - UNDERPASS
  - OVERPASS
  - RAILROAD TUNNEL
  - ARMY, NAVY OR MARINE CORPS FIELD
  - CORAL OR MUNICIPAL AIRPORT
  - HARBORED AIRFIELD
  - HANGAR ON FIELD 1/2 IN STROKE
  - DOCK, PIER OR LANDING
  - FREE OR TOLL FERRY
  - LIGHT, NAUTICAL
  - BOATHOUSE
  - COAST GUARD STATION
  - CANAL
  - WATERSHED
  - WIDE STREAM
  - DAM WITH LOCK
  - DAM
  - RESERVOIR, POND OR LAKE
  - PROHIBITED FISH, NUMBERS INDICATE ELEVATION
  - ROAD THROUGH MOUNTAIN PASS
  - HIGHWAY BRIDGE OVER 20 FT.
  - GRAVE SPAN ON BRIDGE
  - HIGHWAY TUNNEL
  - FORD
  - STATE LINE
  - COUNTY LINE
  - CITY LIMITS
  - RESERVATION OF PARK BOUNDARY
  - POST AREA
  - DELIMITED AREA, POPULATION EST.
  - COUNTY SEAT
  - OTHER TOWNS AND VILLAGES
  - TRIANGULATION STATION
  - INCORPORATED CITY OR VILLAGE, CONTINUED
  - SCHOOL
  - CHURCH
  - CHURCH WITH CEMETERY
  - CEMETERY
  - HOSPITAL
  - CORRECTIONAL OR PENAL INSTITUTION
  - HIGHWAY GARAGE, OR WAREHOUSE, YARD
  - HIGHWAY DIV. OR DEPOT, OFFICE
  - WEIGHT STATION
  - PATROL STATION
  - REST AREA
  - MONUMENT - SMALL HISTORICAL SITE

# SAMPSON COUNTY

## NORTH CAROLINA

PREPARED BY THE  
NORTH CAROLINA DEPARTMENT OF TRANSPORTATION  
DIVISION OF HIGHWAYS - PLANNING AND RESEARCH BRANCH  
IN COOPERATION WITH THE  
U.S. DEPARTMENT OF TRANSPORTATION  
FEDERAL HIGHWAY ADMINISTRATION

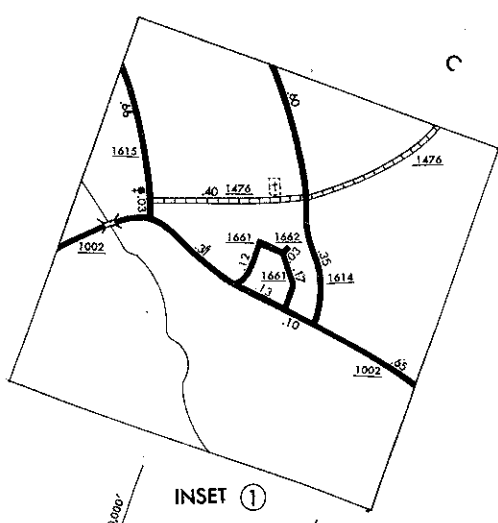


KEY TO COUNTY ROAD NUMBERS  
ALSO NUMBERS 1001, 1002, 1003, 1004, 1005, 1006, 1007, 1008, 1009

NOTE: MAP INCLUDES ONLY STATE MAINTAINED ROADS OR IMPORTANT NON-SYSTEM ROADS. MILEAGE NOT SHOWN ON FRONTAGE ROADS. ROADS SHOWN AS OF JAN. 1, 1978

REVISED

1-1-68
1-1-68
1-1-68
1-1-68
1-1-68
1-1-68
1-1-68
1-1-68
1-1-68
1-1-68



COPY OF THIS MAP IS AVAILABLE TO THE PUBLIC AT A NOMINAL COST. MAPS, N.C. DEPARTMENT OF TRANSPORTATION ADDRESS: RALEIGH, NORTH CAROLINA, 27611