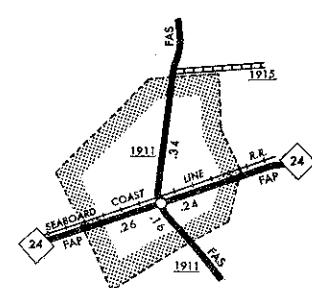
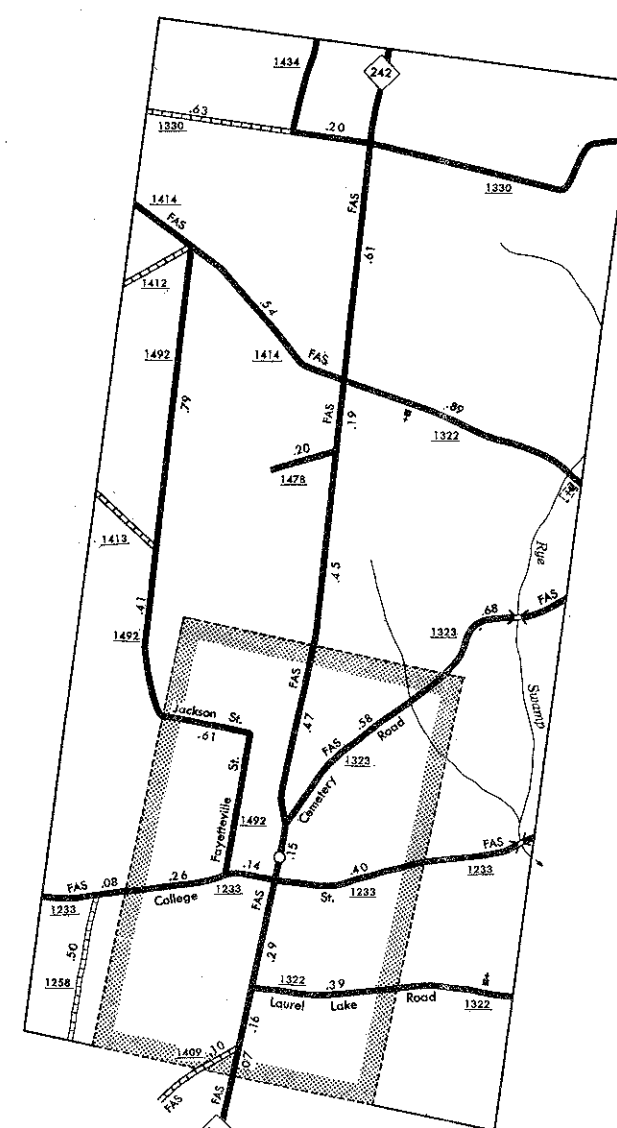


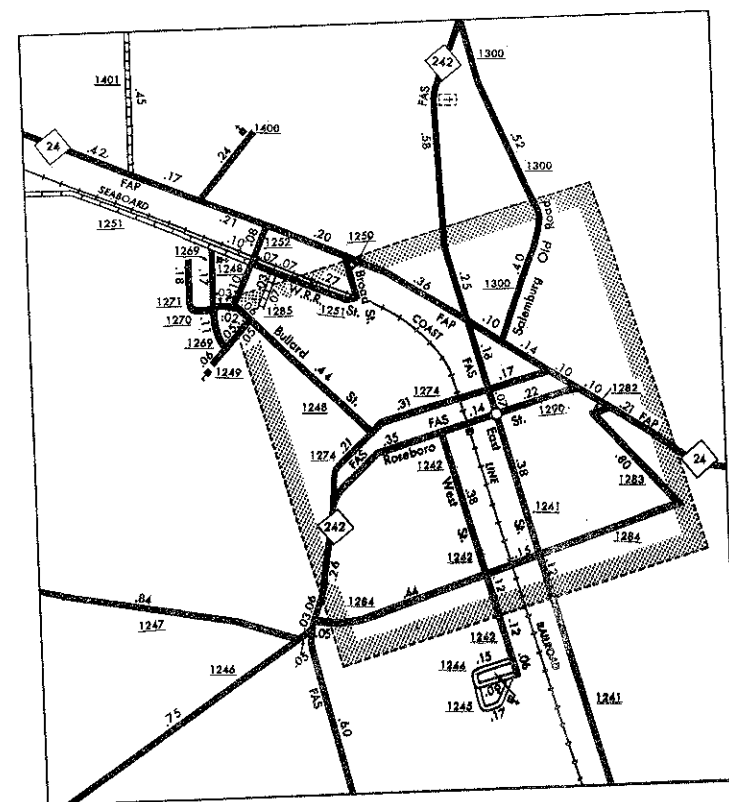
NEWTON GROVE
POP. 546



TURKEY
POP. 329



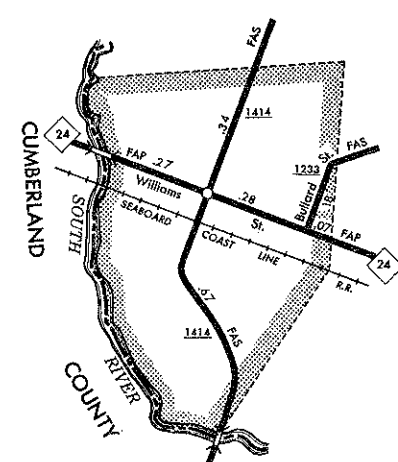
SALEMBURG
POP. 669



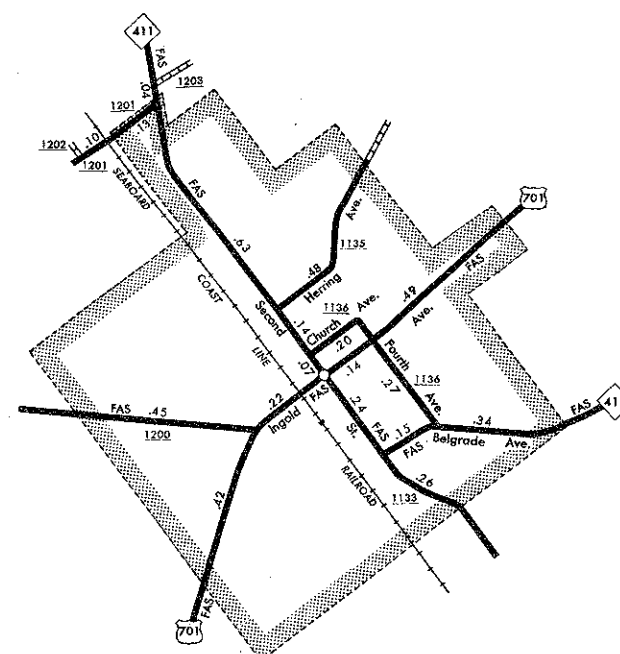
ROSEBORO
POP. 1,235



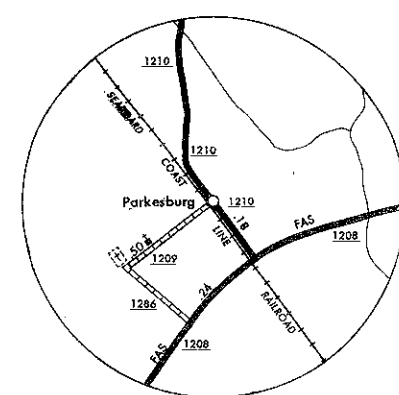
CLINTON
POP. 7,157



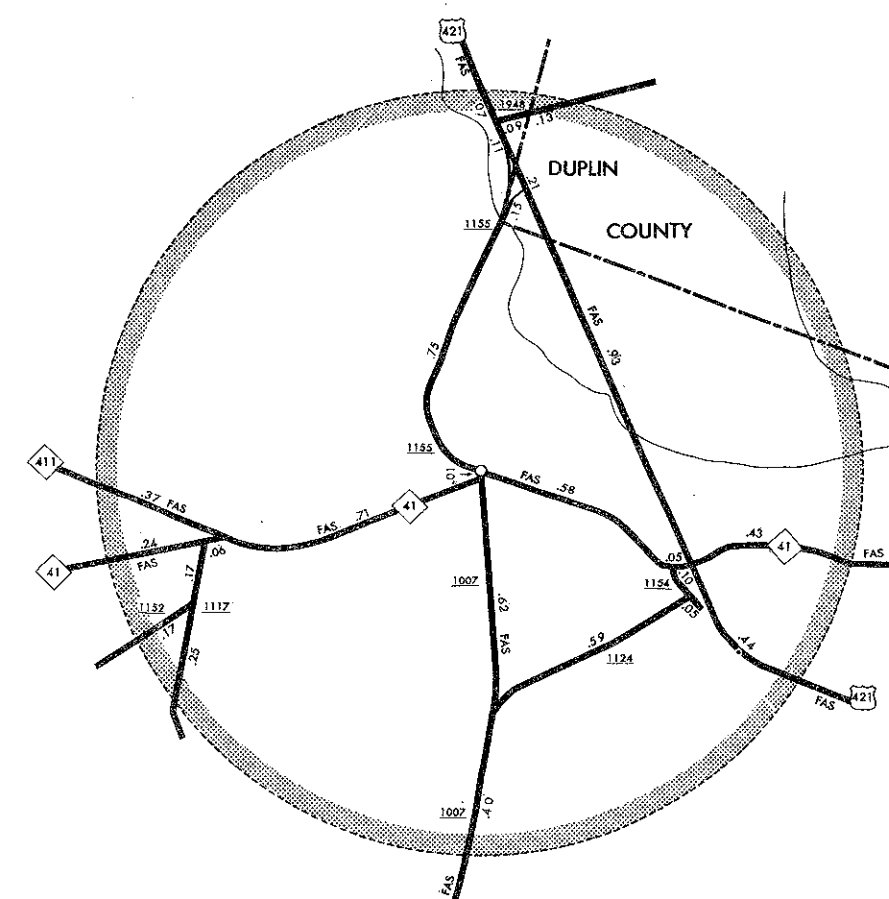
AUTRYVILLE
POP. 213



GARLAND
POP. 656



PARKERSBURG



HARRELLS
POP. 249

ENLARGED MUNICIPAL AND SUBURBAN AREAS **SAMPSON COUNTY** NORTH CAROLINA

PREPARED BY THE
NORTH CAROLINA DEPARTMENT OF TRANSPORTATION
DIVISION OF HIGHWAYS—PLANNING AND RESEARCH BRANCH
IN COOPERATION WITH THE
U.S. DEPARTMENT OF TRANSPORTATION
FEDERAL HIGHWAY ADMINISTRATION

SCALE
1" = 1 MILE

POLYCONIC PROJECTION

SHEET 2 OF 2