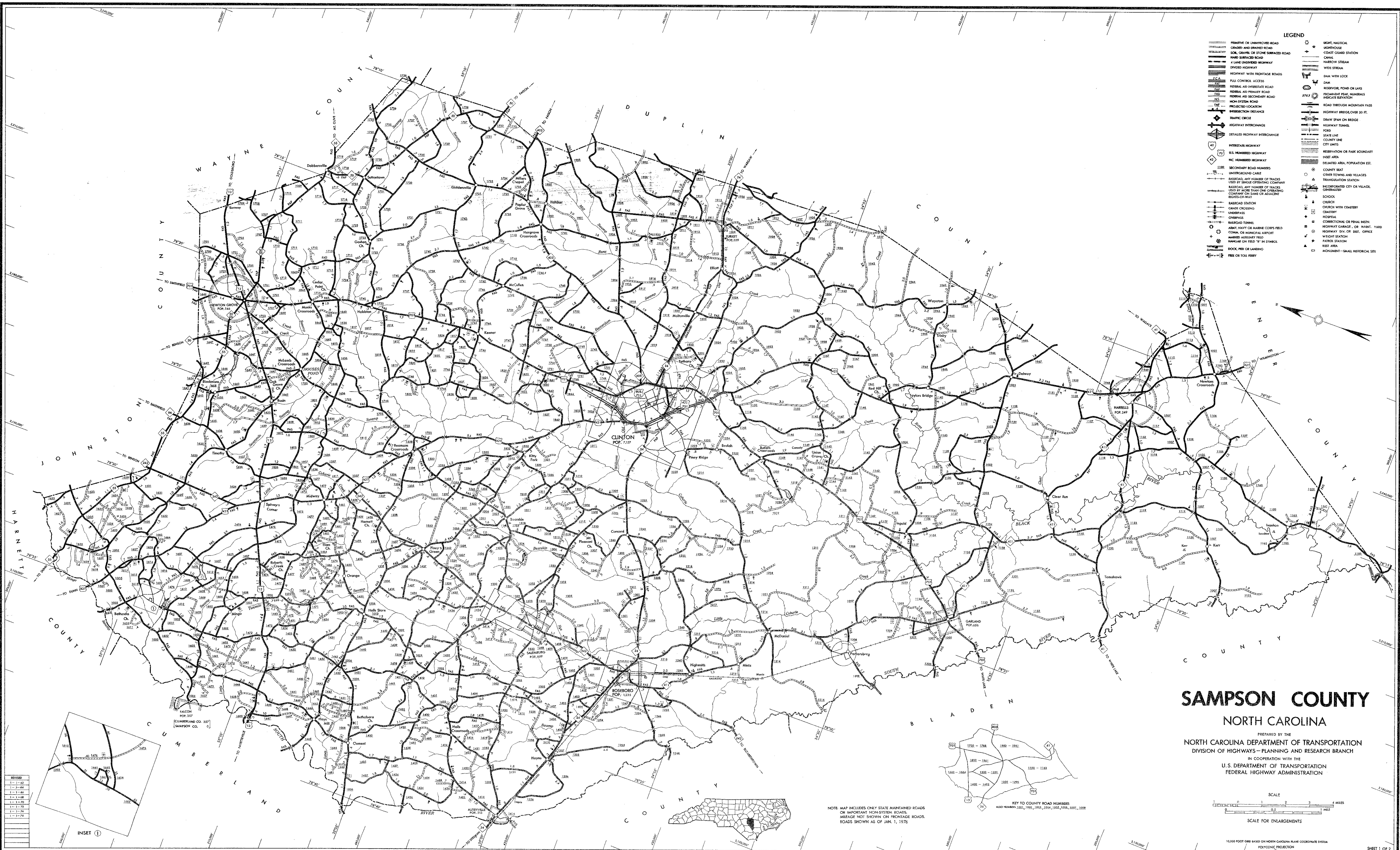
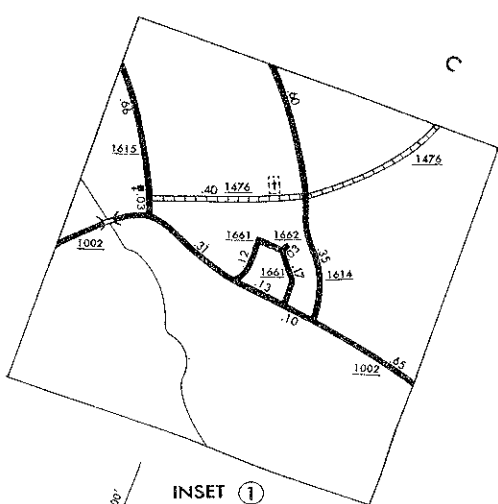


COPIES OF THIS MAP ARE AVAILABLE  
TO THE PUBLIC AT A NOMINAL COST.  
MAILS, ACC. DEPARTMENT OF TRANSPORTATION  
ADDRESS:  
RALEIGH, NORTH CAROLINA, 27611

REVISION
1-1-62
1-1-64
1-1-66
1-1-68
1-1-70
1-1-72
1-1-74
1-1-76



- LEGEND**
- PRIMITIVE OR UNIMPROVED ROAD
  - GRADED OR GRAVEL ROAD
  - SOIL, GRAVEL, OR STONE SURFACED ROAD
  - PAVED SURFACED ROAD
  - 1 LANE UNIMPROVED HIGHWAY
  - 2 LANE UNIMPROVED HIGHWAY
  - 2 LANE UNIMPROVED HIGHWAY WITH FRONTAGE ROADS
  - FULL CONTROL ACCESS
  - FEDERAL AID INTERSTATE ROAD
  - FEDERAL AID PRIMARY ROAD
  - FEDERAL AID SECONDARY ROAD
  - NON-SYSTEM ROAD
  - PROPOSED LOCATION
  - INTERSECTION DISTANCE
  - TRAFFIC CIRCLE
  - HIGHWAY INTERCHANGE
  - DETAILED HIGHWAY INTERCHANGE
  - INTERSTATE HIGHWAY
  - U.S. NUMBERED HIGHWAY
  - NC NUMBERED HIGHWAY
  - SECONDARY ROAD NUMBER
  - UNDERGROUND CABLE
  - RAILROAD, ANY NUMBER OF TRACKS USED BY SPOUSE OPERATING COMPANY
  - RAILROAD, ANY NUMBER OF TRACKS USED BY SPOUSE OTHER THAN ONE OPERATING RIGHTS-OF-WAY
  - RAILROAD STATION
  - GRADE CROSSING
  - UNDERPASS
  - CROSSING
  - RAILROAD TUNNEL
  - ARMY, NAVY, OR MARINE CORPS FIELD
  - CORRAL, OR MARINE AIRPORT
  - ARMED AUXILIARY FIELD
  - ARMED ON FIELD "H" IN SYMBOL
  - ROCK, REEF, OR LANDING
  - FREE OR FUEL FERRY
  - MOBILE, NAUTICAL
  - BOATHOUSE
  - COAST GUARD STATION
  - CHANNEL
  - NARROW STREAM
  - WHITE STREAM
  - DAM WITH LOCK
  - DAM
  - RESERVOIR, POND, OR LAKE
  - PROMINENT PEAK, HILLS, MOUNTAINS, INDICATE ELEVATION
  - ROAD THROUGH MOUNTAIN PASS
  - HIGHWAY BRIDGE OVER 30 FT.
  - DRAW SPAN ON BRIDGE
  - POOD
  - STATE LINE
  - COUNTY LINE
  - CITY LIMITS
  - RESERVATION OR PARK BOUNDARY
  - INSET AREA
  - DECEASED AREA, POPULATION EST.
  - COUNTY SEAT
  - OTHER TOWNS AND VILLAGES
  - TRANSPORTATION STATION
  - INCORPORATED CITY OR VILLAGE, GROUNDWATER
  - SCHOOL
  - CHURCH
  - CHURCH WITH CEMETERY
  - CEMETERY
  - HOSPITAL
  - CORRECTIONAL OR PENAL INST.
  - HIGHWAY GARAGE, OR MARINE, YARD
  - HIGHWAY DOCK, OR DOCK, OFFICE
  - WEIGHT STATION
  - PANORAMA STATION
  - REST AREA
  - MONUMENT - SMALL HISTORICAL SITE

# SAMPSON COUNTY

## NORTH CAROLINA

PREPARED BY THE  
NORTH CAROLINA DEPARTMENT OF TRANSPORTATION  
DIVISION OF HIGHWAYS - PLANNING AND RESEARCH BRANCH  
IN COOPERATION WITH THE  
U.S. DEPARTMENT OF TRANSPORTATION  
FEDERAL HIGHWAY ADMINISTRATION



NOTE: MAP INCLUDES ONLY STATE MAINTAINED ROADS  
OR IMPORTANT NON-SYSTEM ROADS.  
MILEAGE NOT SHOWN ON FRONTAGE ROADS.  
ROADS SHOWN AS OF JAN. 1, 1975.

