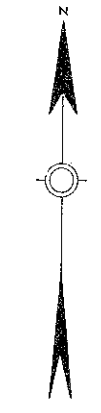
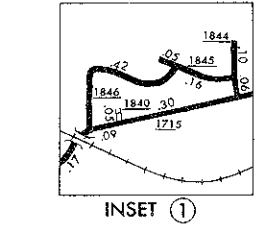
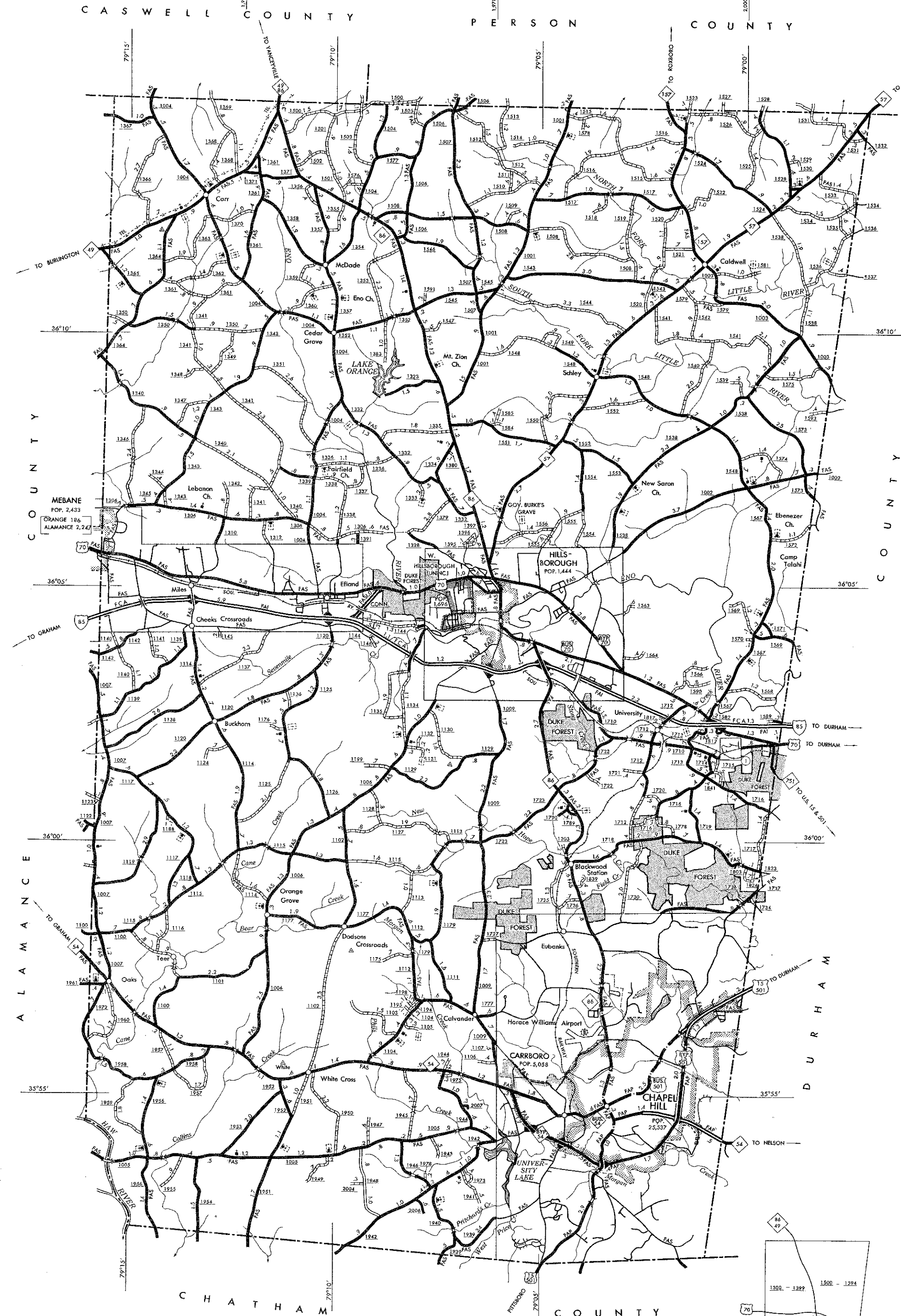


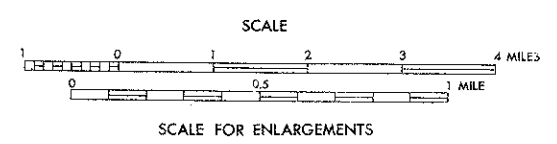
COPIES OF THIS MAP ARE AVAILABLE
TO THE PUBLIC AT A NOMINAL COST
FROM THE DIVISION OF HIGHWAYS
ADDRESS
RALEIGH, NORTH CAROLINA, 27611

REVISION
1 - 1 - 61
2 - 1 - 64
3 - 1 - 64
4 - 1 - 64
5 - 1 - 64
6 - 1 - 64
7 - 1 - 64
8 - 1 - 64
9 - 1 - 64
10 - 1 - 64
11 - 1 - 64
12 - 1 - 64
13 - 1 - 64
14 - 1 - 64
15 - 1 - 64
16 - 1 - 64
17 - 1 - 64
18 - 1 - 64
19 - 1 - 64
20 - 1 - 64
21 - 1 - 64
22 - 1 - 64
23 - 1 - 64
24 - 1 - 64
25 - 1 - 64
26 - 1 - 64
27 - 1 - 64
28 - 1 - 64
29 - 1 - 64
30 - 1 - 64
31 - 1 - 64
32 - 1 - 64
33 - 1 - 64
34 - 1 - 64
35 - 1 - 64
36 - 1 - 64
37 - 1 - 64
38 - 1 - 64
39 - 1 - 64
40 - 1 - 64
41 - 1 - 64
42 - 1 - 64
43 - 1 - 64
44 - 1 - 64
45 - 1 - 64
46 - 1 - 64
47 - 1 - 64
48 - 1 - 64
49 - 1 - 64
50 - 1 - 64
51 - 1 - 64
52 - 1 - 64
53 - 1 - 64
54 - 1 - 64
55 - 1 - 64
56 - 1 - 64
57 - 1 - 64
58 - 1 - 64
59 - 1 - 64
60 - 1 - 64
61 - 1 - 64
62 - 1 - 64
63 - 1 - 64
64 - 1 - 64
65 - 1 - 64
66 - 1 - 64
67 - 1 - 64
68 - 1 - 64
69 - 1 - 64
70 - 1 - 64
71 - 1 - 64
72 - 1 - 64
73 - 1 - 64
74 - 1 - 64
75 - 1 - 64
76 - 1 - 64
77 - 1 - 64
78 - 1 - 64
79 - 1 - 64
80 - 1 - 64
81 - 1 - 64
82 - 1 - 64
83 - 1 - 64
84 - 1 - 64
85 - 1 - 64
86 - 1 - 64
87 - 1 - 64
88 - 1 - 64
89 - 1 - 64
90 - 1 - 64
91 - 1 - 64
92 - 1 - 64
93 - 1 - 64
94 - 1 - 64
95 - 1 - 64
96 - 1 - 64
97 - 1 - 64
98 - 1 - 64
99 - 1 - 64
100 - 1 - 64



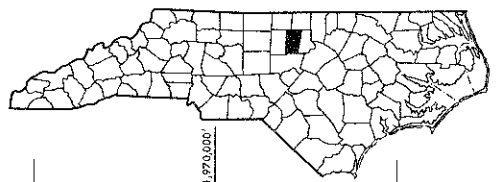
ORANGE COUNTY NORTH CAROLINA

PREPARED BY THE
NORTH CAROLINA DEPARTMENT OF TRANSPORTATION
DIVISION OF HIGHWAYS—PLANNING AND RESEARCH BRANCH
IN COOPERATION WITH THE
U.S. DEPARTMENT OF TRANSPORTATION
FEDERAL HIGHWAY ADMINISTRATION



KEY TO COUNTY ROAD NUMBERS
ALSO NUMBERS 1001, 1002, 1003, 1004, 1005, 1006, 1007, 1008, 1009

NOTE: MAP INCLUDES ONLY STATE MAINTAINED ROADS
OR IMPORTANT NON-STATE MAINTAINED ROADS.
MILEAGE NOT SHOWN ON FRONTAGE ROADS.
ROADS SHOWN AS OF JAN. 1, 1976



1:62,500 (1:62,500) BASED ON NORTH CAROLINA PLANE COORDINATE SYSTEM
POLYCONIC PROJECTION