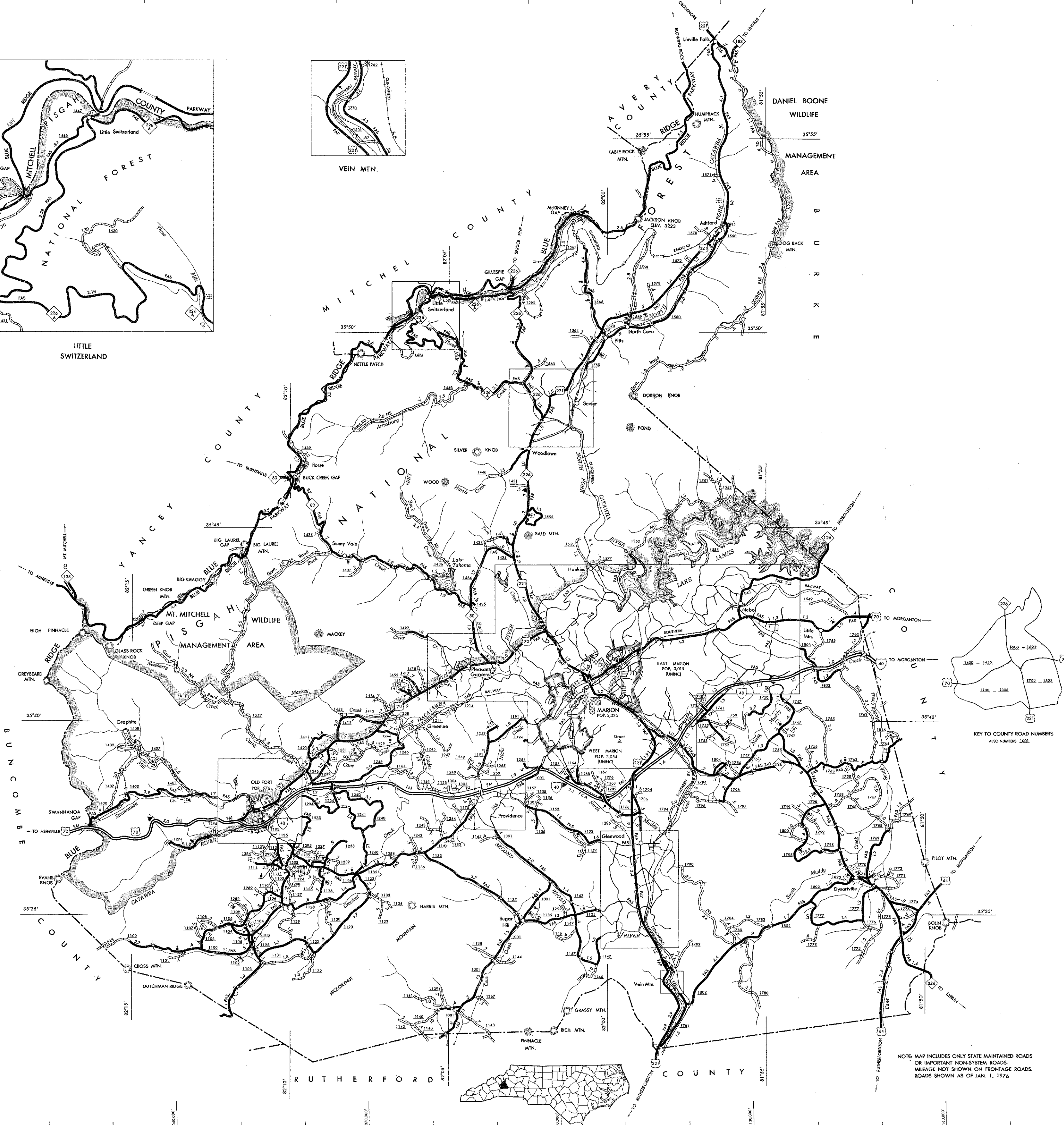
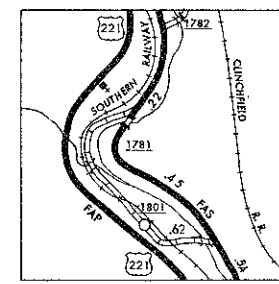
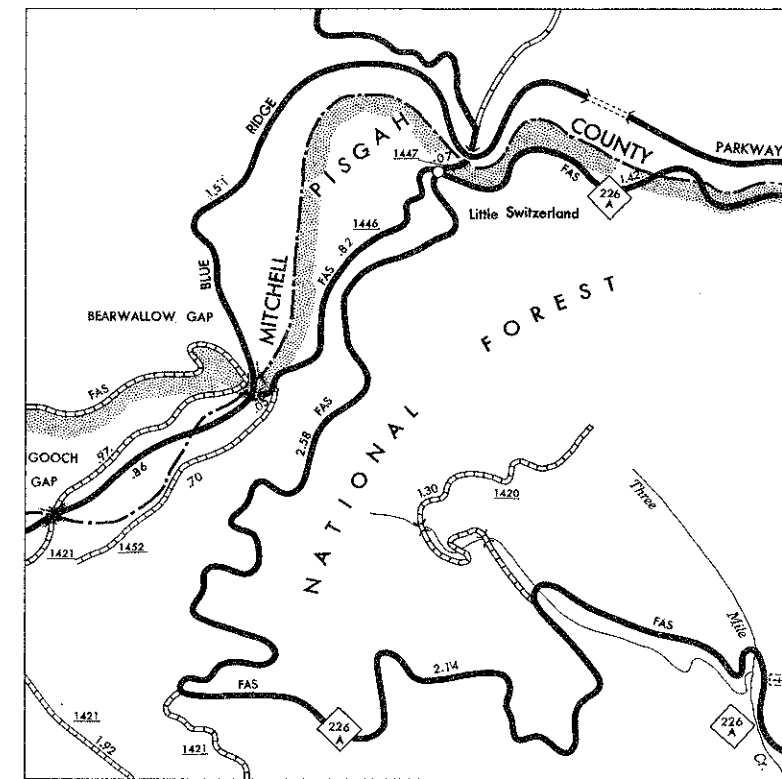
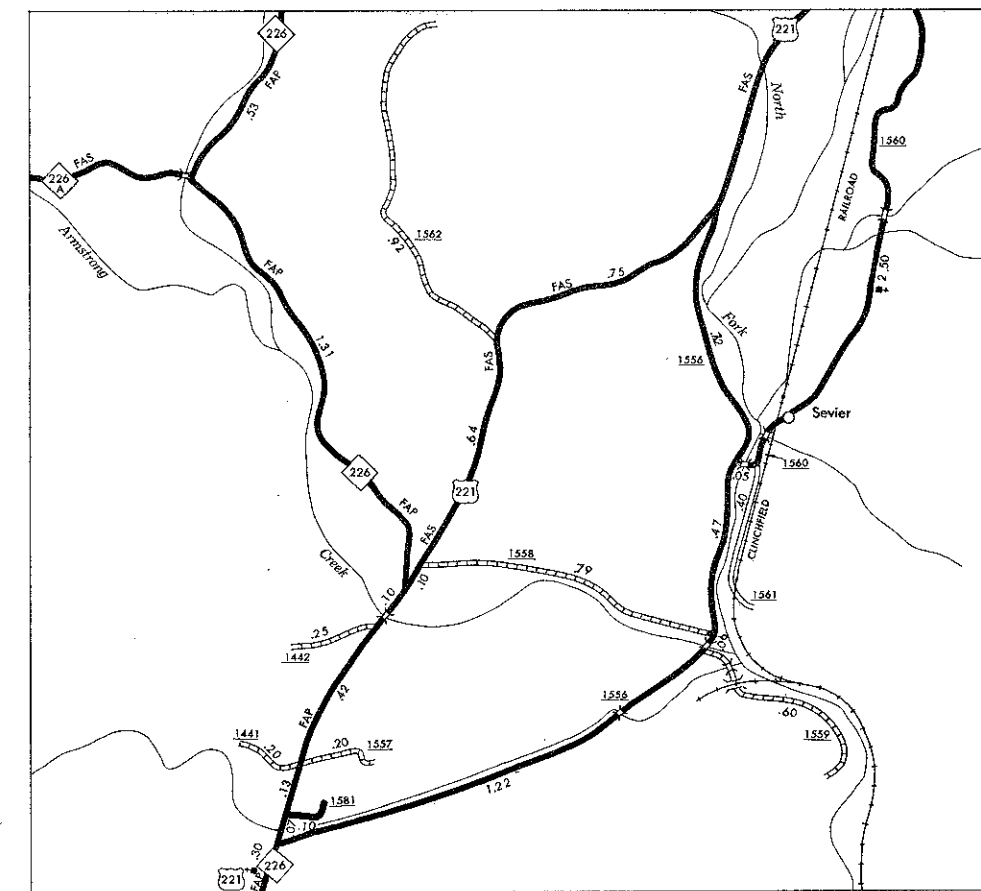
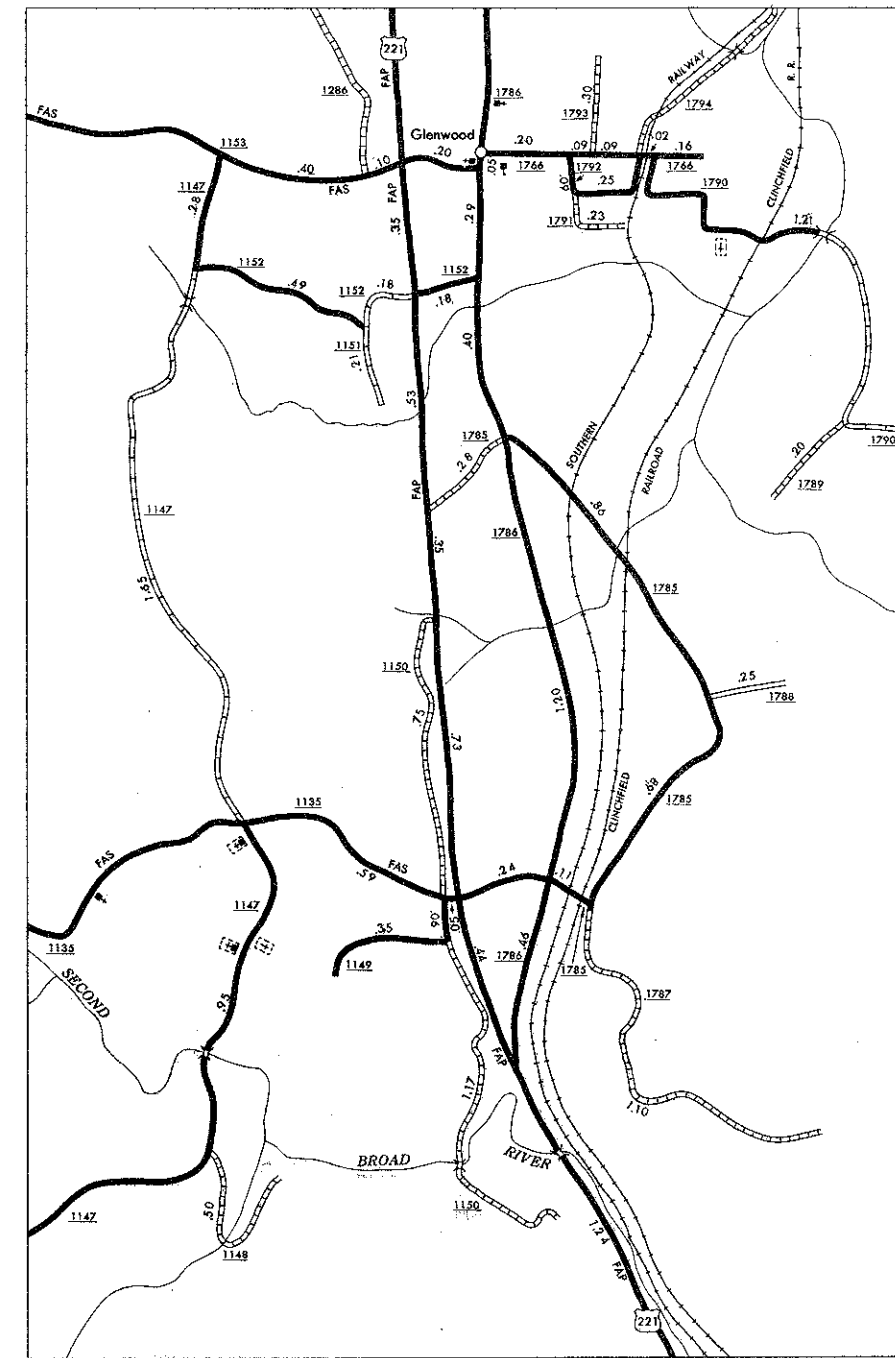
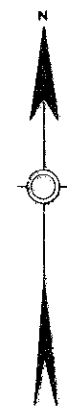


COPIES OF THIS MAP ARE AVAILABLE
FROM THE NATIONAL COAST
AND GEODETIC SURVEY
DIVISION OF HIGHWAYS
ALEXANDRIA, VIRGINIA 22304

MC DOWELL



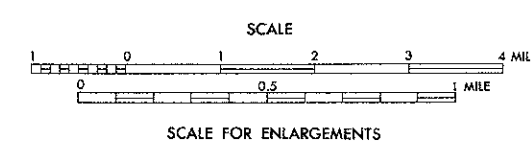
- LEGEND
- PRIMITIVE OR UNIMPROVED ROAD
 - GRADED AND DRAINED ROAD
 - SOL. GRAVEL OR STONE SURFACED ROAD
 - HARD SURFACED ROAD
 - 4 LANE UNDIVIDED HIGHWAY
 - DIVIDED HIGHWAY
 - HIGHWAY WITH FRONTAGE ROADS
 - FULL CONTROL ACCESS
 - FEDERAL AID INTERSTATE ROAD
 - FEDERAL AID PRIMARY ROAD
 - FEDERAL AID SECONDARY ROAD
 - NON-SYSTEM ROAD
 - PROPOSED LOCATION
 - INTERSECTION DISTANCE
 - TRAFFIC CIRCLE
 - HIGHWAY INTERCHANGE
 - DETAILED HIGHWAY INTERCHANGE
 - INTERSTATE HIGHWAY
 - U.S. NUMBERED HIGHWAY
 - N.C. NUMBERED HIGHWAY
 - SECONDARY ROAD NUMBER
 - UNDERGROUND CABLE
 - RAILROAD, ANY NUMBER OF TRACKS
USED BY SINGLE OPERATING COMPANY
 - RAILROAD, ANY NUMBER OF TRACKS
USED BY MORE THAN ONE OPERATING
COMPANY ON SAME OR ADJACENT
RIGHTS-OF-WAY
 - RAILROAD STATION
 - CRAZE CROSSING
 - UNDERPASS
 - OVERPASS
 - RAILROAD TUNNEL
 - ARMY, NAVY OR MARINE CORPS FIELD
 - CONAL OR MARINE AIRPORT
 - HARBOR AUXILIARY FIELD
 - HARBOR ON FIELD "B" IN SERVICE
 - DOCK, PIER OR LANDING
 - FREE OR TOLL FERRY
 - LIGHT, NAUTICAL
 - LIGHTHOUSE
 - COAST GUARD STATION
 - CANAL
 - NARROW STREAM
 - WIDE STREAM
 - DAM WITH LOCK
 - DAM
 - RESERVOIR, POND OR LAKE
 - POWDERMILL FALL, NUMBERS
INDICATE ELEVATION
 - ROAD THROUGH MOUNTAIN PASS
 - HIGHWAY BRIDGE OVER 50 FT.
 - DRAW SPAN ON BRIDGE
 - HIGHWAY TUNNEL
 - ROAD
 - STATE LINE
 - COUNTY LINE
 - CITY LIMITS
 - RESERVATION OR PARK BOUNDARY
 - WOLF AREA
 - DELMETER AREA, POPULATION EST.
 - COUNTY SEAT
 - OTHER TOWNS AND VILLAGES
 - TRANSCONTINENTAL STATION
 - INCORPORATED CITY OR VILLAGE
GENERALIZED
 - SCHOOL
 - CHURCH
 - CHURCH WITH CEMETERY
 - CEMETERY
 - HOSPITAL
 - CORRECTIONAL OR PENAL INST.
 - HIGHWAY GARAGE, C.P. WAREHOUSE
 - HIGHWAY DEV. OR DIST. OFFICE
 - WATER STATION
 - WATER STATION
 - REST AREA
 - MONUMENT—SMALL HISTORICAL SITE



MC DOWELL COUNTY

NORTH CAROLINA

PREPARED BY THE
NORTH CAROLINA DEPARTMENT OF TRANSPORTATION
DIVISION OF HIGHWAYS—PLANNING AND RESEARCH BRANCH
IN COOPERATION WITH THE
U.S. DEPARTMENT OF TRANSPORTATION
FEDERAL HIGHWAY ADMINISTRATION



15,000 FOOT GRID BASED ON NORTH CAROLINA PLANE COORDINATE SYSTEM
POLYCONIC PROJECTION

SHEET 1 OF 2

MC DOWELL COUNTY NORTH CAROLINA 111