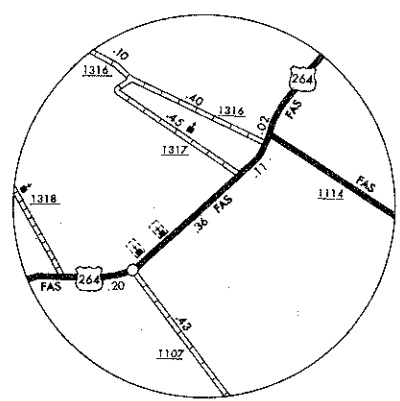
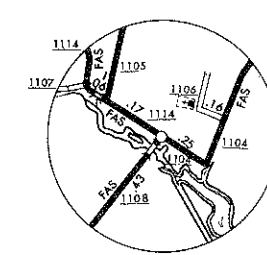


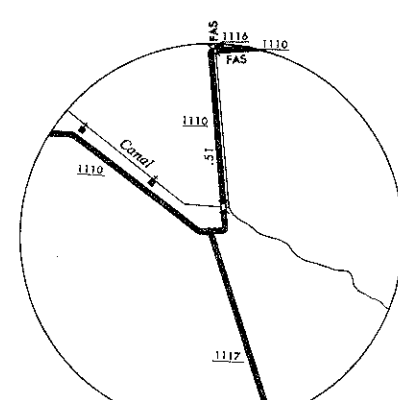
ENGELHARD



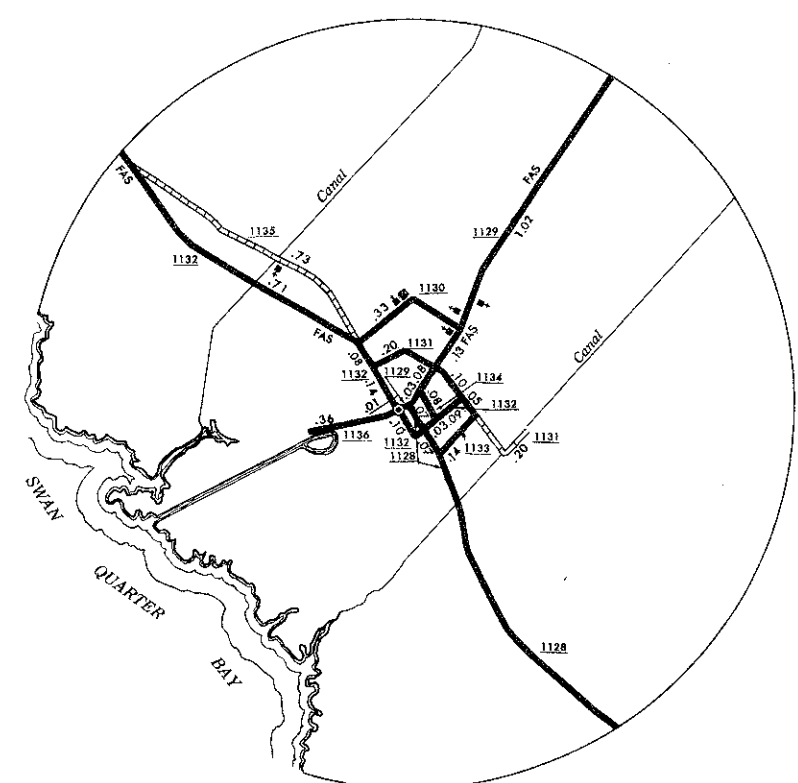
AMITY



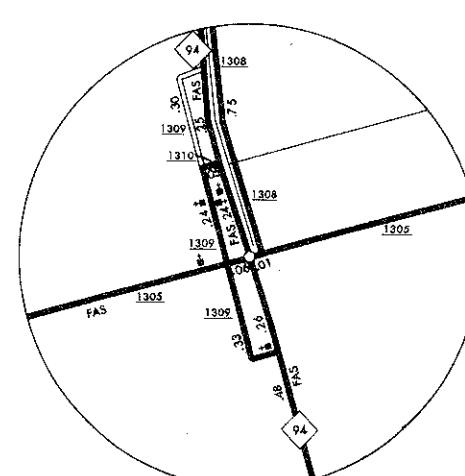
MIDDLETOWN



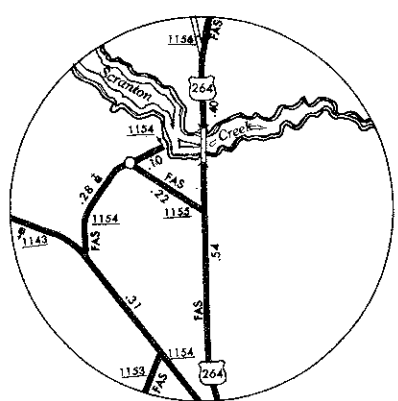
INSET ①



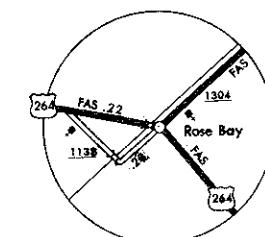
SWAN QUARTER



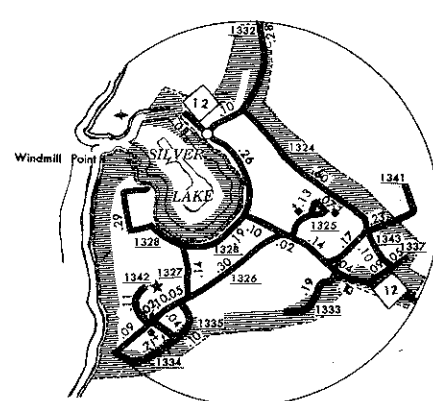
FAIRFIELD



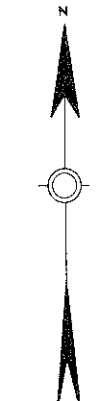
SCRANTON



ROSE BAY



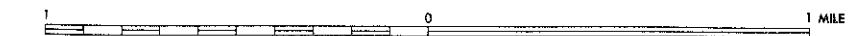
OCRACOKE
(UNINC.)
POP. 541



ENLARGED MUNICIPAL AND SUBURBAN AREAS
HYDE COUNTY
NORTH CAROLINA

PREPARED BY THE
DEPARTMENT OF TRANSPORTATION AND HIGHWAY SAFETY
DIVISION OF HIGHWAYS—PLANNING AND RESEARCH BRANCH
IN COOPERATION WITH THE
U.S. DEPARTMENT OF TRANSPORTATION
FEDERAL HIGHWAY ADMINISTRATION

SCALE



POLYCONIC PROJECTION

SHEET 2 OF 2

COPIES OF THIS MAP ARE AVAILABLE
TO THE PUBLIC AT A NOMINAL COST.
ADDRESS: FEDERAL BUREAU OF HIGHWAYS
WASHINGTON, D.C. 20541
RALEIGH, NORTH CAROLINA, 27611

REVISED
1-1-43
1-1-44
1-1-45
1-1-46
1-1-47
1-1-48
1-1-49
1-1-50
1-1-51
1-1-52
1-1-53
1-1-54
1-1-55
1-1-56
1-1-57
1-1-58
1-1-59
1-1-60
1-1-61
1-1-62
1-1-63
1-1-64
1-1-65
1-1-66
1-1-67
1-1-68
1-1-69
1-1-70
1-1-71
1-1-72
1-1-73
1-1-74
1-1-75
1-1-76
1-1-77
1-1-78
1-1-79
1-1-80
1-1-81
1-1-82
1-1-83
1-1-84
1-1-85
1-1-86
1-1-87
1-1-88
1-1-89
1-1-90
1-1-91
1-1-92
1-1-93
1-1-94
1-1-95
1-1-96
1-1-97
1-1-98
1-1-99
1-1-00

HYDE SUP.