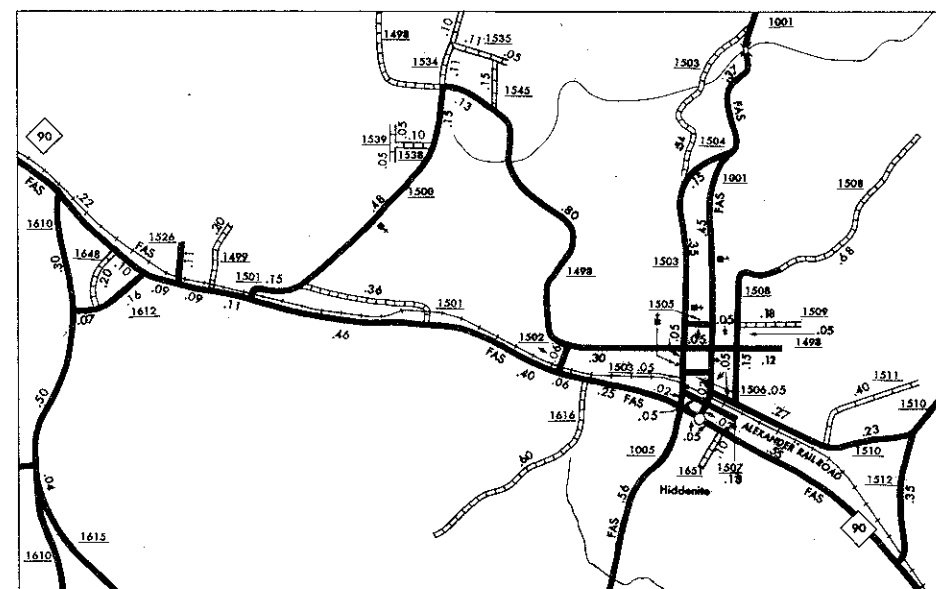
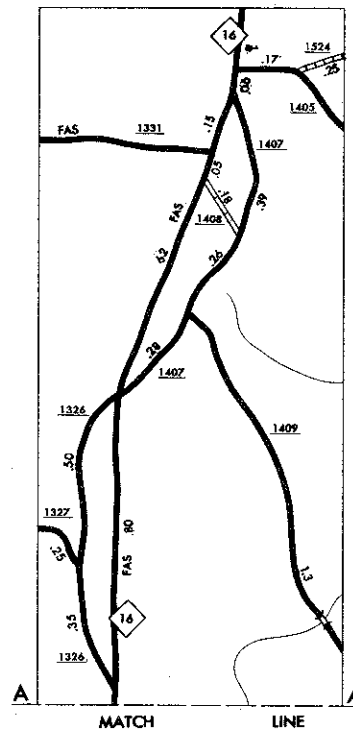
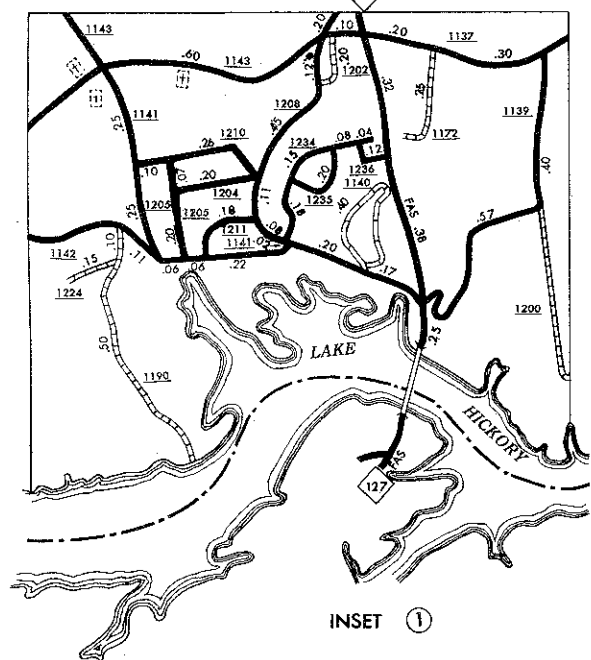


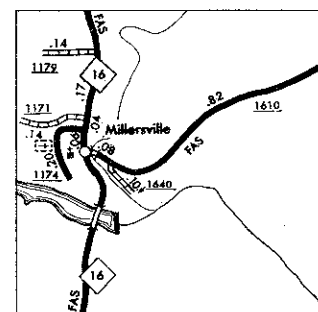
TAYLORSVILLE
POP. 1,231



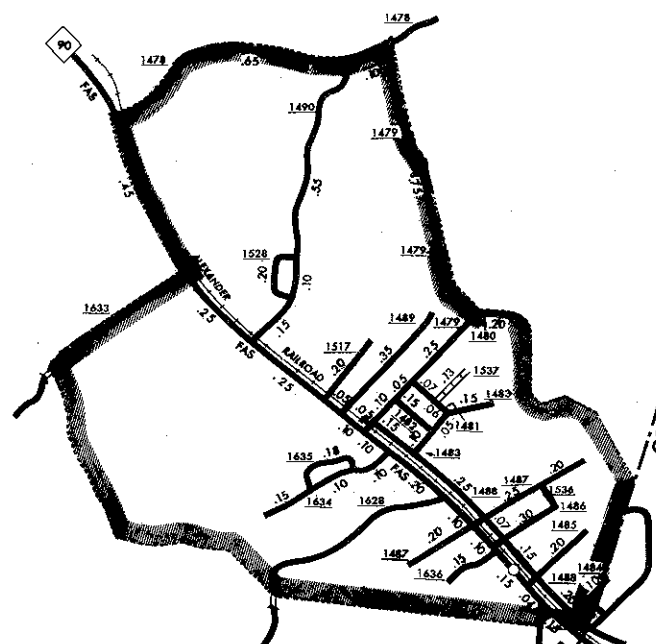
HIDDENITE



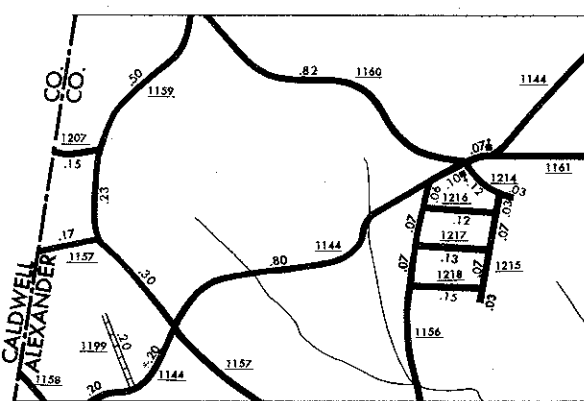
INSET ①



MILLERSVILLE



STONY POINT
(UNINC.)
POP. 1,001

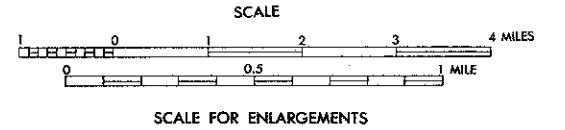


INSET ②



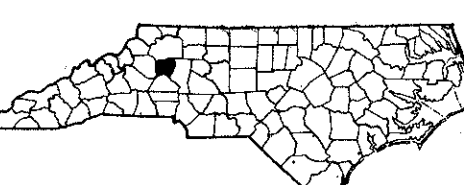
ALEXANDER COUNTY NORTH CAROLINA

PREPARED BY THE
DEPARTMENT OF TRANSPORTATION AND HIGHWAY SAFETY
DIVISION OF HIGHWAYS - PLANNING AND RESEARCH BRANCH
IN COOPERATION WITH THE
U.S. DEPARTMENT OF TRANSPORTATION
FEDERAL HIGHWAY ADMINISTRATION



KEY TO COUNTY ROAD NUMBERS
ALSO NUMBERS 1300, 1302, 1303

NOTE: MAP INCLUDES ONLY STATE MAINTAINED ROADS
OR IMPORTANT NON-STATE MAINTAINED ROADS.
MILEAGE NOT SHOWN ON FRONTAGE ROADS.
ROADS SHOWN AS OF JAN. 1, 1974



COPY OF THIS MAP ARE AVAILABLE
FROM THE
U.S. DEPARTMENT OF TRANSPORTATION
DIVISION OF HIGHWAYS - PLANNING AND RESEARCH BRANCH
WASHINGTON, D.C. 20540

ALEXANDER