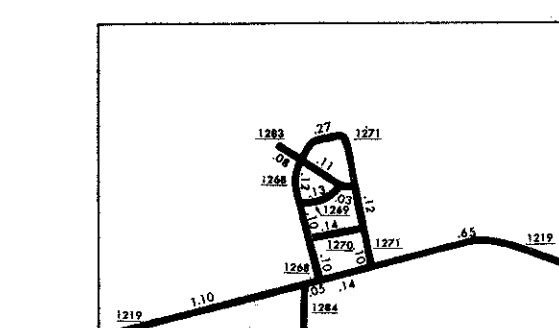


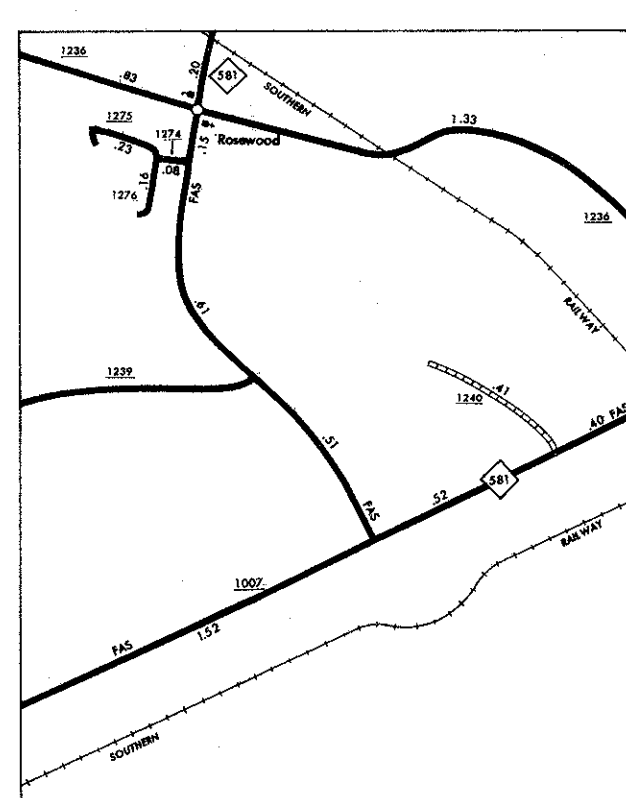
COPY OF THIS MAP ARE AVAILABLE
JAMES HARRIS, N.C. STATE HIGHWAY COMMISSION
RALEIGH, NORTH CAROLINA 27611

WAYNE

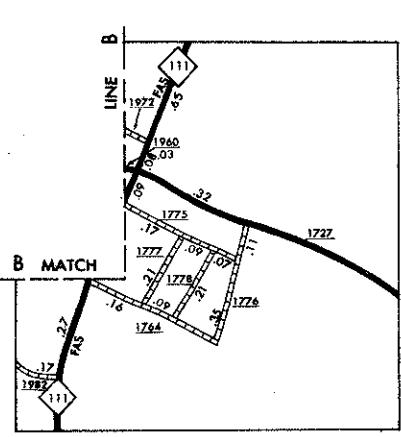
Scale
1" = 1-00'
1" = 1-200'
1" = 1-400'
1" = 1-600'
1" = 1-800'
1" = 1-1000'
1" = 1-1200'
1" = 1-1400'
1" = 1-1600'
1" = 1-1800'
1" = 1-2000'



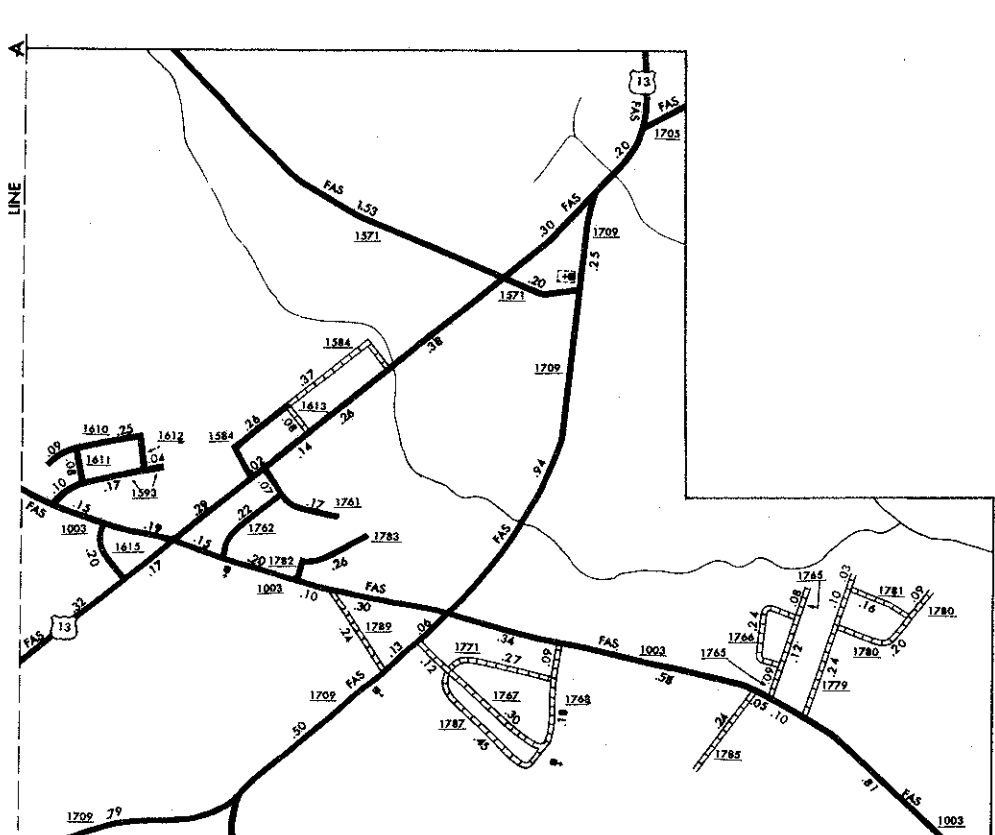
INSET ③ MATCH



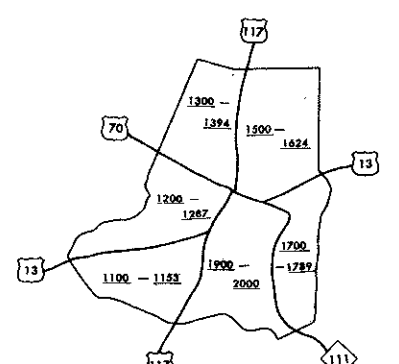
ROSEWOOD



INSET ②

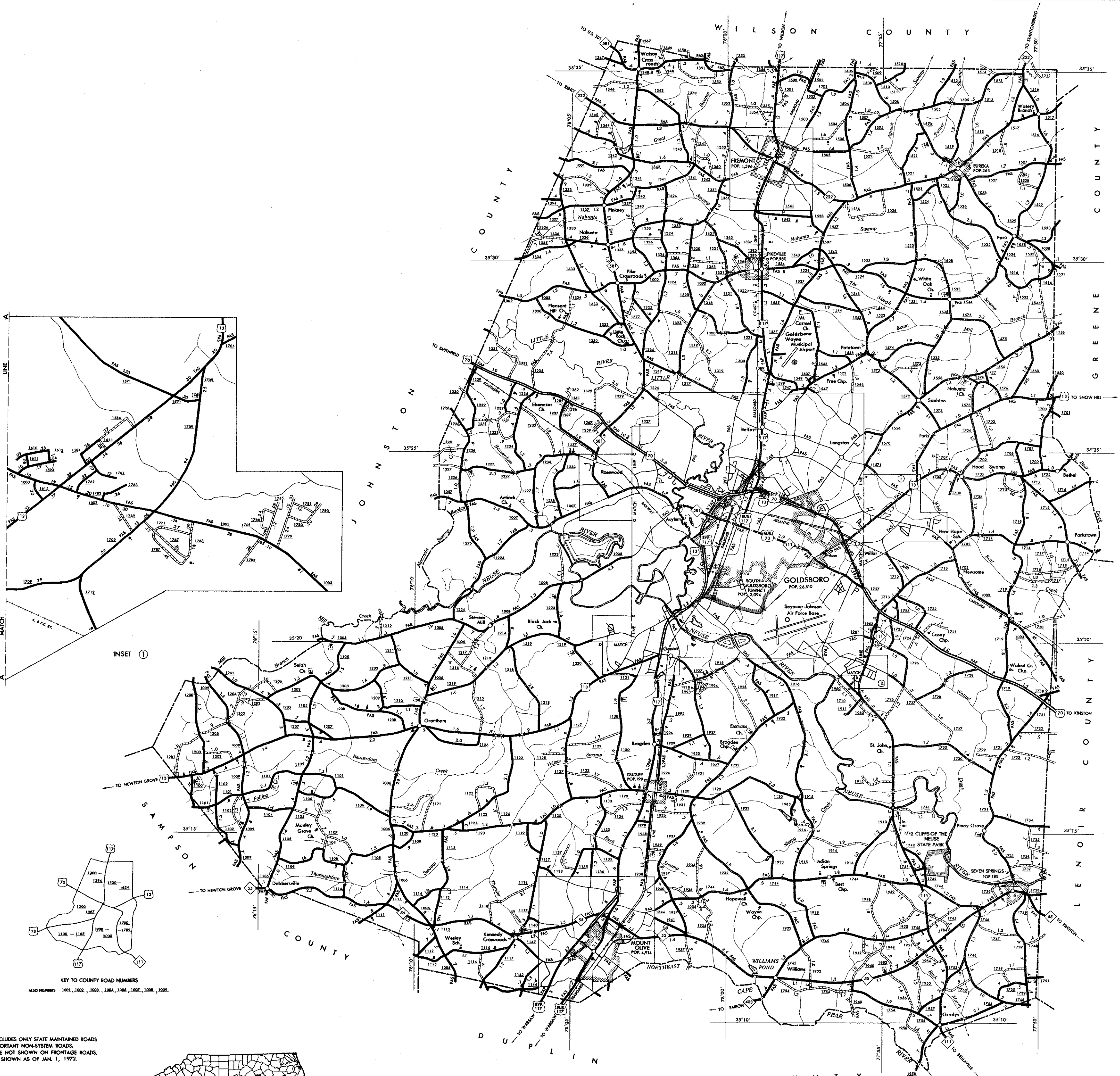
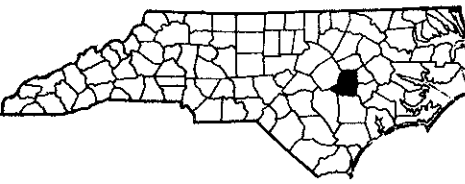


INSET ①



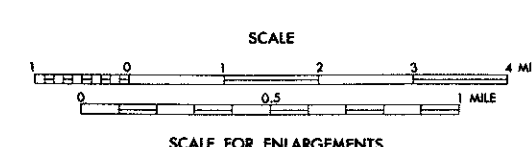
KEY TO COUNTY ROAD NUMBERS
ALSO NUMBERS 1001, 1002, 1003, 1004, 1005, 1006, 1007, 1008, 1009

NOTE: MAP INCLUDES ONLY STATE MAINTAINED ROADS
OR IMPORTANT NON-STATE MAINTAINED ROADS.
ROADS NOT SHOWN ON FRONTAGE ROADS.
ROADS SHOWN AS OF JAN. 1, 1972.



WAYNE COUNTY NORTH CAROLINA

PREPARED BY THE
NORTH CAROLINA STATE HIGHWAY COMMISSION
PLANNING AND RESEARCH DEPARTMENT
IN COOPERATION WITH THE
U.S. DEPARTMENT OF TRANSPORTATION
FEDERAL HIGHWAY ADMINISTRATION



POLYCONIC PROJECTION
SHEET 1 OF 2

- LEGEND
- UNPAVED ROAD OR TRAIL
 - PRIVATE OR UNPAVED ROAD
 - GRAVEL AND GRAVEL ROAD
 - SOIL GRAVEL OR STONE SURFACE ROAD
 - ROAD SURFACE ROAD
 - 4 LANE UNPAVED HIGHWAY
 - DIVIDED HIGHWAY
 - HIGHWAY WITH FRONTAGE ROADS
 - PAV. CONTROL ACCESS
 - FEDERAL AID INTERSTATE ROAD
 - FEDERAL AID PRIMARY ROAD
 - FEDERAL AID SECONDARY ROAD
 - NON-FEDERAL ROAD
 - PROJECTED LOCATION
 - INTERSECTION DISTANCE
 - TRAFFIC CIRCLE
 - HIGHWAY INTERCHANGE
 - DETAILED HIGHWAY INTERCHANGE
 - INTERSTATE HIGHWAY
 - U.S. NUMBERED HIGHWAY
 - U.S. NUMBERED HIGHWAY
 - 1196 SECONDARY ROAD NUMBER
 - RAILROAD, ANY NUMBER OF TRACKS
USED BY SINGLE OPERATING COMPANY
 - RAILROAD, ANY NUMBER OF TRACKS
OPERATED BY MORE THAN ONE OPERATING
COMPANY ON SAME OR ADJACENT
PORTIONS OF WAY
 - RAILROAD STATION
 - GRADE CROSSING
 - UNDERPASS
 - OVERPASS
 - RAILROAD TUNNEL
 - ARMY, NAVY OR MARINE CORPS FIELD
 - CORAL OR MUNICIPAL AIRPORT
 - ARMED AIRCRAFT FIELD
 - HANGAR ON FIELD "B" IN SYMBOL
 - DOCK, PIER OR LANDING
 - FERRY OR TOLL FERRY
 - LIGHT, NAUTICAL
 - LIGHTHOUSE
 - COAST GUARD STATION
 - CANAL
 - NARROW STREAM
 - WIDE STREAM
 - DAM WITH LOCK
 - DAM
 - RESERVOIR, POND OR LAKE
 - POWDER MILL, NUMERALS
INDICATE ELEVATION
 - ROAD THROUGH HIGHWAY PASS
 - HIGHWAY BRIDGE OVER 20 FT
 - DRAW SPAN ON BRIDGE
 - HIGHWAY TUNNEL
 - POWDER MILL
 - STATE LINE
 - COUNTY LINE
 - CITY LIMITS
 - RESERVATION OR PARK BOUNDARY
 - INSET AREA
 - DELIMITED AREA, POPULATION EST.
 - COUNTY SEAT
 - OTHER TOWNS AND VILLAGES
 - TRANSCALCULATION STATION
 - INCORPORATED CITY OR VILLAGE
 - CENSUS
 - CHURCH
 - CHURCH WITH CEMETERY
 - SCHOOLS
 - CORRECTIONAL OR PENAL INSTIT.
 - STATE HIGHWAY GARAGE
 - HIGHWAY SUB-OFFICE
 - REST AREA