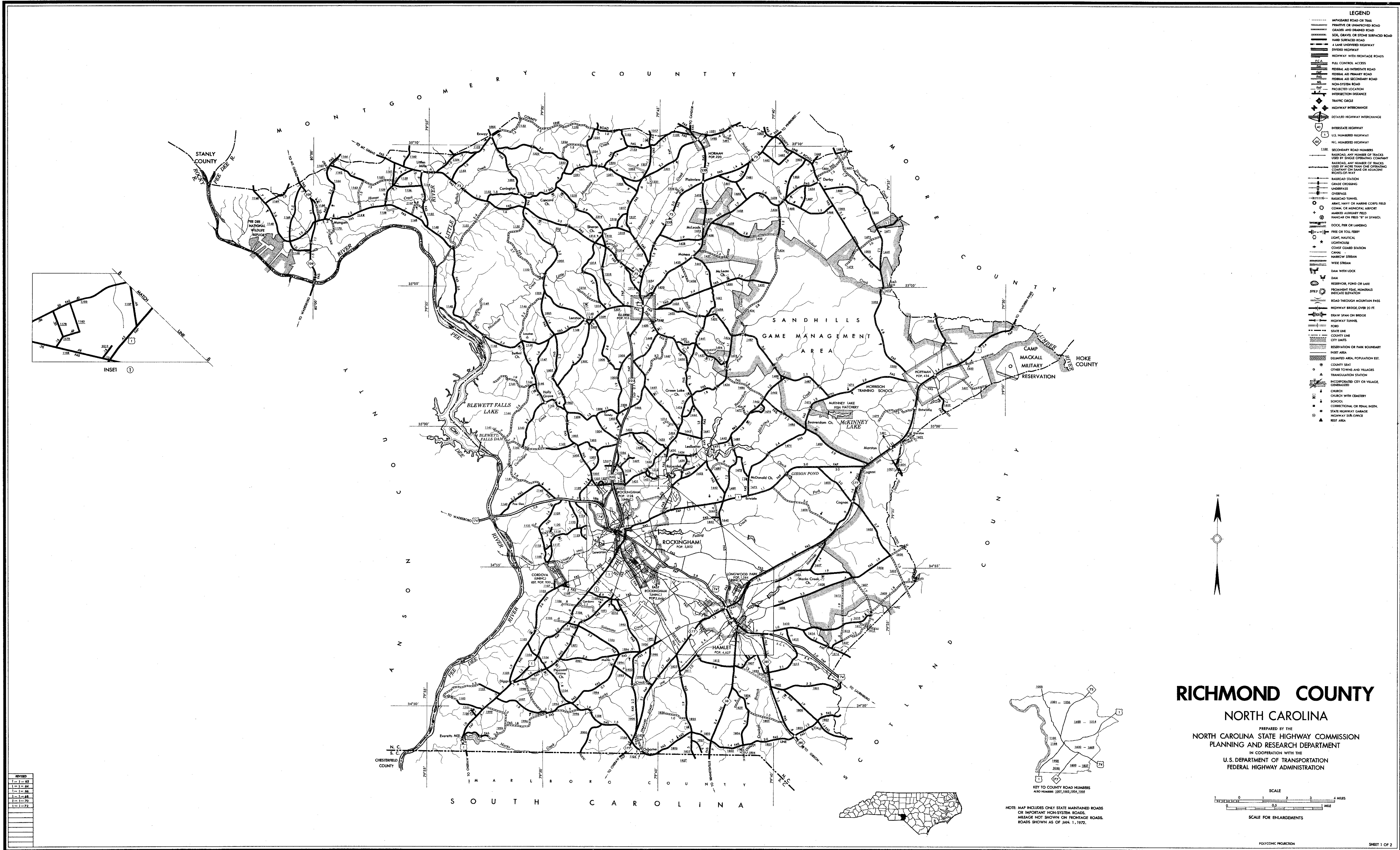


REVISION
1-1-62
1-1-64
1-1-66
1-1-68
1-1-70
1-1-72

CORRES OF THIS MAP ARE AVAILABLE  
FROM THE NORTH CAROLINA HIGHWAY COMMISSION  
1000 W. MAIN ST., Rm. 200, RALEIGH, N.C. 27601



- LEGEND**
- IMPASSABLE ROAD OR TRAIL
  - PRIVATE OR UNIMPROVED ROAD
  - GRADED AND DRAINED ROAD
  - SOIL, GRAVEL OR STONE SURFACED ROAD
  - HARD SURFACED ROAD
  - A LANE UNIMPROVED HIGHWAY
  - DIVIDED HIGHWAY
  - RIGHTWAY WITH FRONTAGE ROADS
  - PUL CONTROL ACCESS
  - FEDERAL AID INTERSTATE ROAD
  - FEDERAL AID PRIMARY ROAD
  - FEDERAL AID SECONDARY ROAD
  - NON-SYSTEM ROAD
  - PROJECTED LOCATION
  - INTERSECTION DISTANCE
  - TRAFFIC CIRCLE
  - HIGHWAY INTERCHANGE
  - DETAILED HIGHWAY INTERCHANGE
  - INTERSTATE HIGHWAY
  - U.S. NUMBERED HIGHWAY
  - N.C. NUMBERED HIGHWAY
  - SECONDARY ROAD NUMBER
  - RAILROAD, ANY NUMBER OF TRACKS
  - RAILROAD, ANY NUMBER OF TRACKS, USED BY SINGLE OPERATING COMPANY
  - RAILROAD, ANY NUMBER OF TRACKS, USED BY MORE THAN ONE OPERATING COMPANY OR AS A JUNCTION
  - RIGHTS-OF-WAY
  - RAILROAD STATION
  - GRADE CROSSING
  - UNDERPASS
  - OVERPASS
  - RAILROAD TUNNEL
  - ARMY, NAVY OR MARINE CORPS FIELD
  - CORRAL OR AIRCRAFT AIRPORT
  - MAINTAINED ADJUTANT FIELD
  - HATCHERY ON FRESH OR SALT WATER
  - DOCK, PIER OR LANDING
  - FREE OR TOLL FERRY
  - LIGHT, NAUTICAL
  - LIGHTHOUSE
  - COAST GUARD STATION
  - CANAL
  - NARROW STREAM
  - WIDE STREAM
  - DAM WITH LOCK
  - DAM
  - RESERVOIR, POND OR LAKE
  - PROHIBITED FISH, NUMBERS INDICATE ELEVATION
  - ROAD THROUGH MOUNTAIN PASS
  - HIGHWAY BRIDGE, OVER 50 FT.
  - DRAW SPAN OR BRIDGE
  - HIGHWAY TUNNEL
  - FORD
  - COUNTY LINE
  - CITY LIMITS
  - RESERVATION OR PARK BOUNDARY
  - POST AREA
  - DELIMITED AREA, POPULATION EST.
  - COUNTY SEAT
  - OTHER TOWNS AND VILLAGES
  - TRIANGULATION STATION
  - INCORPORATED CITY OR VILLAGE, CENSUS
  - CHURCH
  - CHURCH WITH CEMETERY
  - SCHOOL
  - CORRECTIONAL OR PENAL INST.
  - STATE HIGHWAY GARAGE
  - HIGHWAY SERVICE
  - REST AREA

# **RICHMOND COUNTY**

## **NORTH CAROLINA**

PREPARED BY THE  
NORTH CAROLINA STATE HIGHWAY COMMISSION  
PLANNING AND RESEARCH DEPARTMENT  
IN COOPERATION WITH THE  
U.S. DEPARTMENT OF TRANSPORTATION  
FEDERAL HIGHWAY ADMINISTRATION

