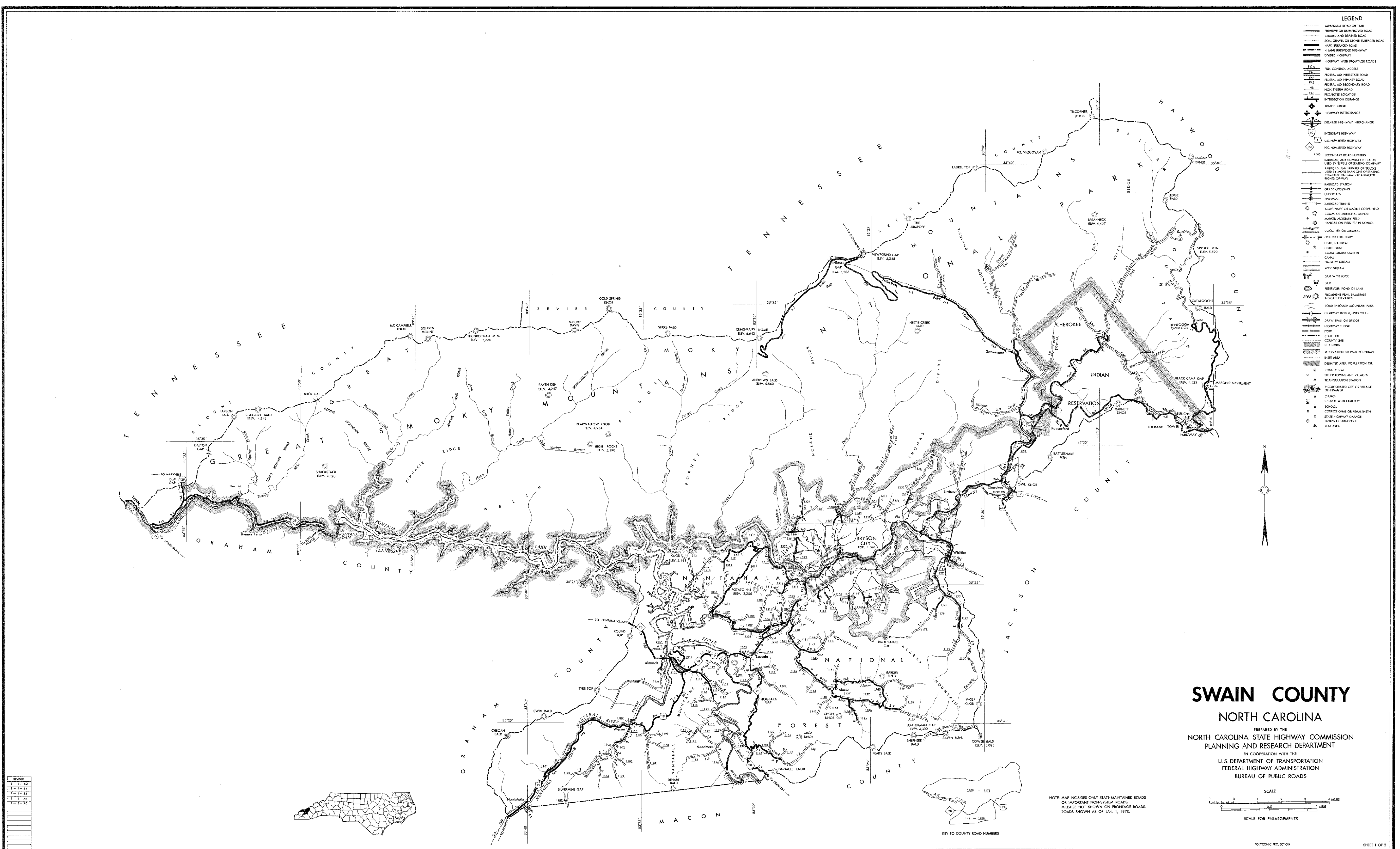


REVISION	DATE	BY	APP
1	1-62		
2	1-64		
3	1-66		
4	1-68		
5	1-70		

SWAIN



SWAIN COUNTY
NORTH CAROLINA
 PREPARED BY THE
 NORTH CAROLINA STATE HIGHWAY COMMISSION
 PLANNING AND RESEARCH DEPARTMENT
 IN COOPERATION WITH THE
 U.S. DEPARTMENT OF TRANSPORTATION
 FEDERAL HIGHWAY ADMINISTRATION
 BUREAU OF PUBLIC ROADS