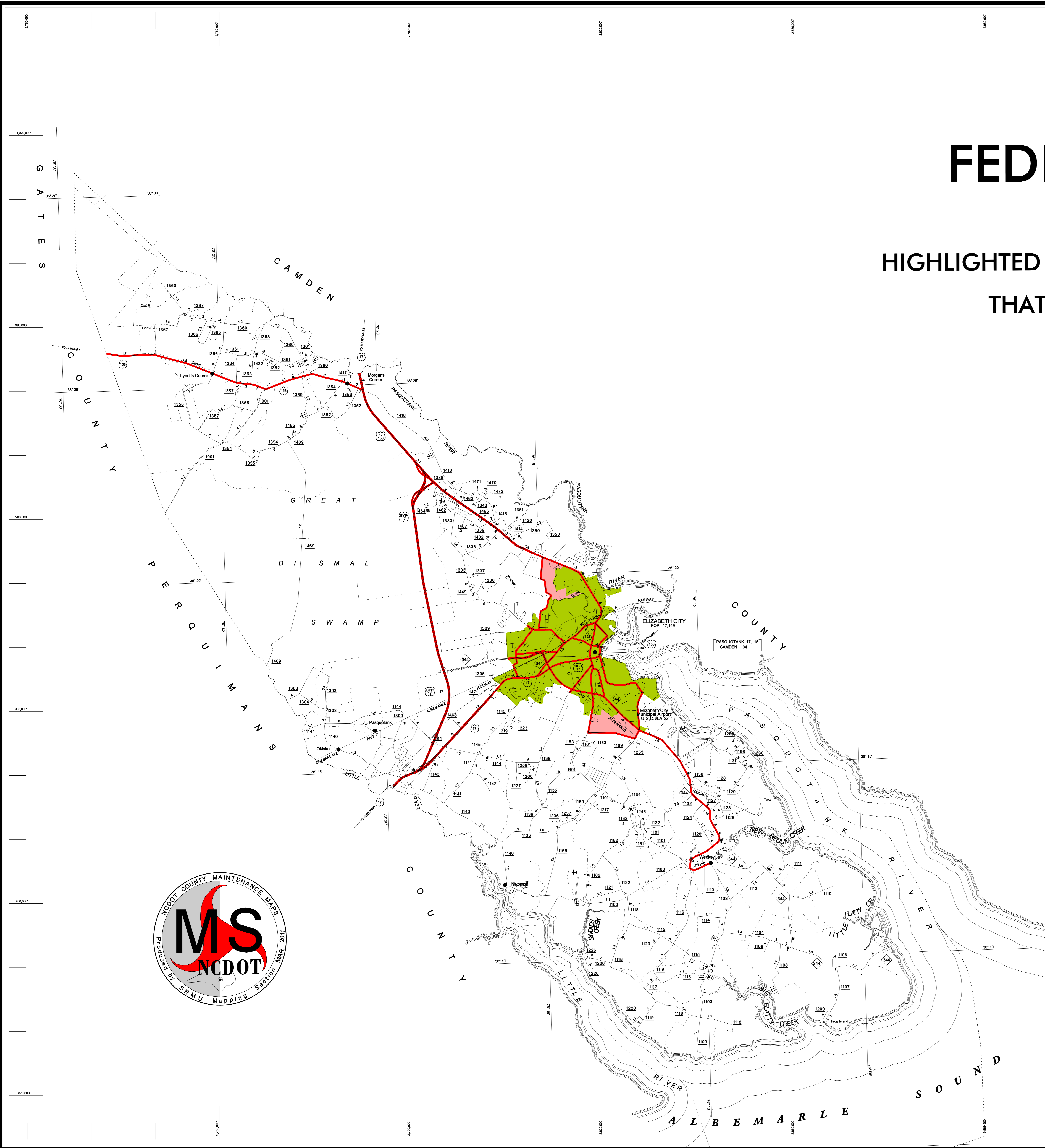


FEDERAL AID ROUTES

ATTACHMENT A

HIGHLIGHTED ROUTES REPRESENT FEDERAL AID ROUTES
THAT ARE NOT ELIGIBLE FOR RELEASE



FEDERAL AID ROUTES

INCLUDES: INTERSTATES, FREEWAYS, EXPRESSWAYS, PRINCIPAL ARTERIALS, MINOR ARTERIALS & MAJOR COLLECTORS

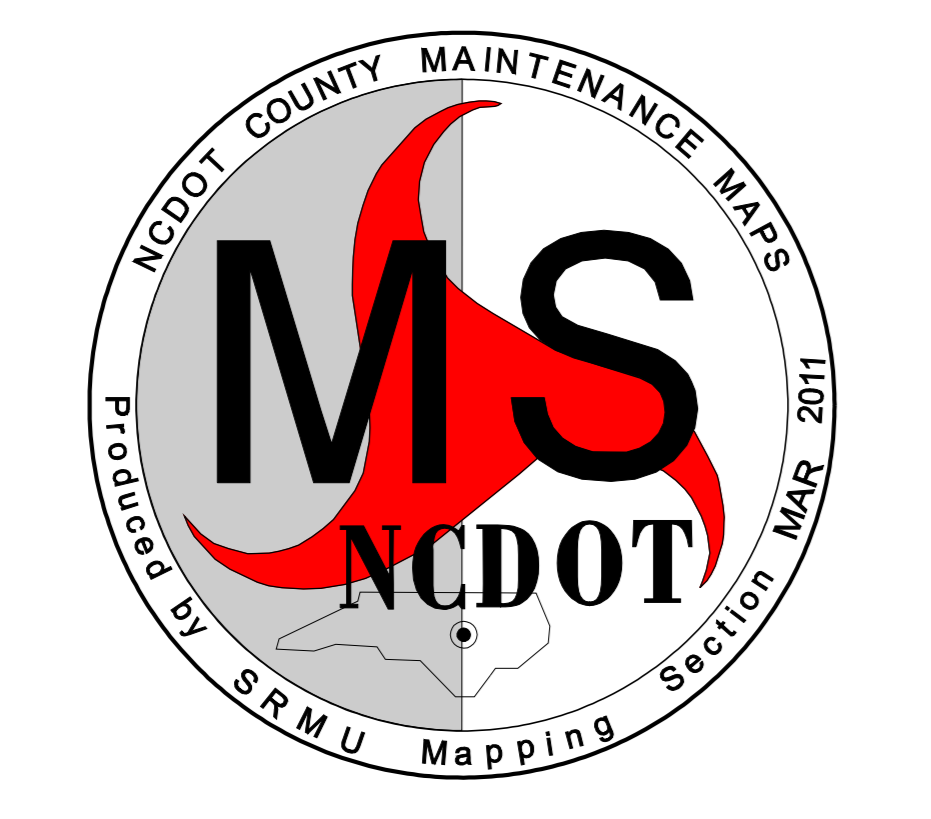
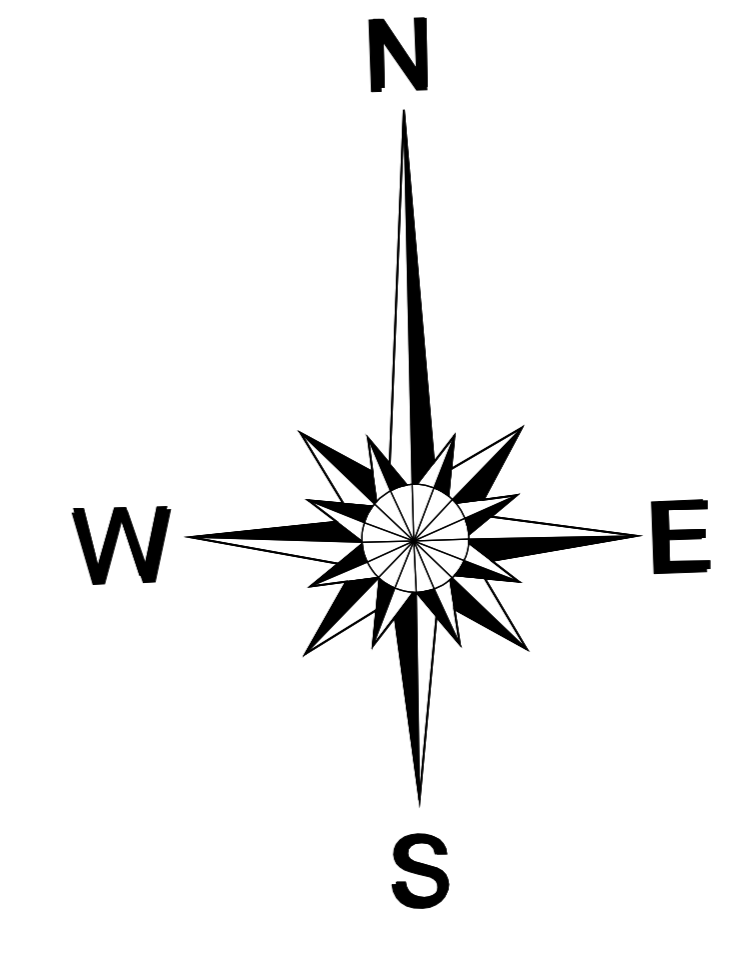
EXISTING URBAN AREA

SMOOTHED AREA

APPROVED BY FHWA FEB. 14, 2006

LEGEND

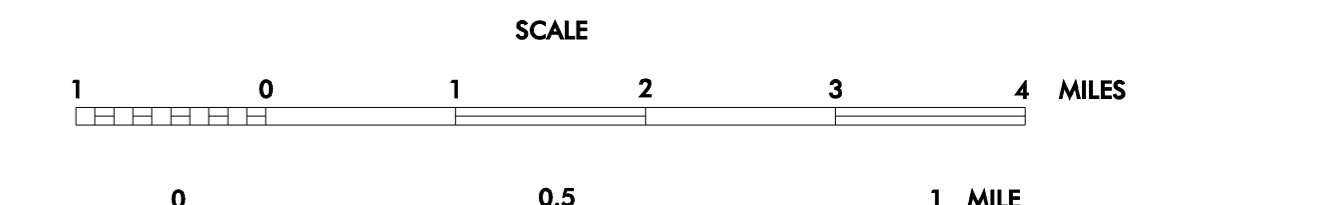
	PRIMITIVE OR UNIMPROVED ROAD
	GRADED AND DRAINED ROAD
	SOIL GRAVEL OR STONE SURFACED ROAD
	HARD SURFACED ROAD
	4 LANE UNDIVIDED HIGHWAY
	DIVIDED HIGHWAY
	HIGHWAY WITH FRONTAGE ROADS
	FCA
	NON-SYSTEM ROAD
	PROJECTED LOCATION
	INTERSECTION DISTANCE
	TRAFFIC CIRCLE
	HIGHWAY INTERCHANGE
	DETAILED HIGHWAY INTERCHANGE
	ROAD THROUGH MOUNTAIN PASS
	HIGHWAY BRIDGE
	UNDERPASS
	OVERPASS
	DRAW SPAN ON BRIDGE
	HIGHWAY TUNNEL
	FORD
	INTERSTATE HIGHWAY
	U.S. NUMBERED HIGHWAY
	N.C. NUMBERED HIGHWAY
	U.S. NUMBERED BICYCLE ROUTE
	N.C. NUMBERED BICYCLE ROUTE
	INTERSTATE INTERCHANGE NUMBER
	SECONDARY ROAD NUMBER
	CABLE
	RAILROAD ANY NUMBER OF TRACKS
	RAILROAD ANY NUMBER OF TRACKS USED BY MORE THAN ONE OPERATION
	RAILROAD ANY NUMBER OF TRACKS USED BY SINGLE OPERATING COMPANY
	RAILROAD STATION
	GRADE CROSSING
	UNDERPASS
	OVERPASS
	RAILROAD TUNNEL
	INSET AREA
	URBAN EXTENSION BOUNDARY LINE
	RESERVATION OR PARK BOUNDARY
	CITY LIMIT
	NATIONAL FOREST BOUNDARY
	STATE FOREST BOUNDARY
	FEDERAL GAME LAND BOUNDARY
	STATE GAME LAND BOUNDARY
	MILITARY RESERVATION BOUNDARY
	COUNTY LINE
	STATE LINE
	INCORPORATED CITY OR VILLAGE (GENERALIZED)
	FREE OR TOLL FERRY
	CANAL NARROW STREAM
	WIDE STREAM
	DAM WITH LOCK
	DAM
	RESERVOIR, POND, OR LAKE
	COMMUNITY AND TOWN CENTER
	COUNTY SEAT
	SCHOOL
	COLLEGE OR UNIVERSITY
	HOSPITAL
	CHURCH
	CHURCH WITH CEMETERY
	CEMETERY
	PATROL STATION
	CORRECTIONAL OR PENAL INSTN.
	HIGHWAY GARAGE OR MAINT. YARD
	HIGHWAY DIV. OR DIST. OFFICE
	WEIGHT STATION
	MONUMENT-SMALL HISTORICAL SITE
	LIGHTHOUSE
	MOUNTAIN PEAK
	REST AREA
	TRIANGULATION STATION
	COAST GUARD STATION
	MILITARY AIRFIELD
	COMMERCIAL OR MUNICIPAL FIELD
	HANGAR ON FIELD
	LANDING STRIP
	MARKED AUXILIARY FIELD



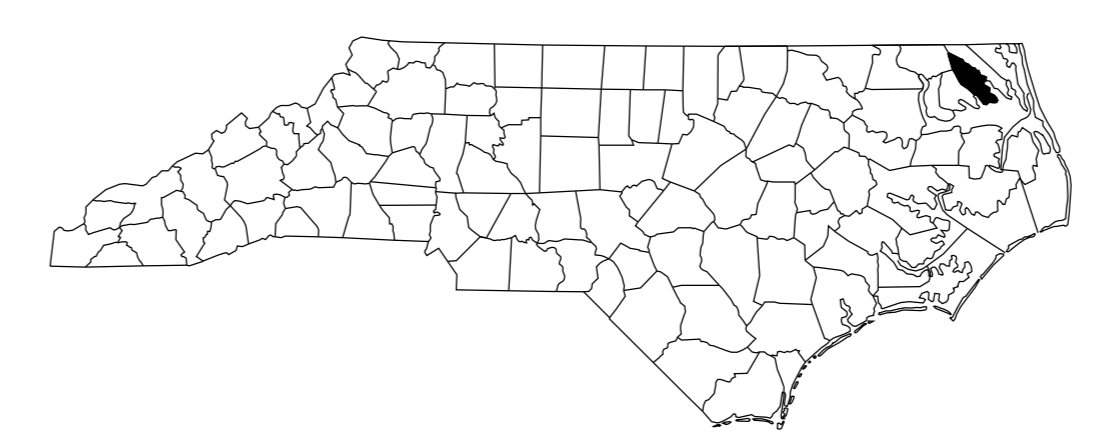
PASQUOTANK COUNTY NORTH CAROLINA

PREPARED BY THE
NORTH CAROLINA DEPARTMENT OF TRANSPORTATION
STATE ROAD MAINTENANCE UNIT - MAPPING AND INFORMATION SECTION

IN COOPERATION WITH THE
U.S. DEPARTMENT OF TRANSPORTATION
FEDERAL HIGHWAY ADMINISTRATION



10,000 FOOT GRID BASED ON NORTH CAROLINA PLANE COORDINATE SYSTEM
POLYCONIC PROJECTION



COPIES OF THIS MAP ARE AVAILABLE
TO THE PUBLIC AT A NOMINAL COST.
ADDRESS:
STATE ROAD MAINTENANCE UNIT
MAPPING AND INFORMATION SECTION
3001 CARL LAMBERT DR.
RANDOLPH, NC 28134

PASQUOTANK

REVISED