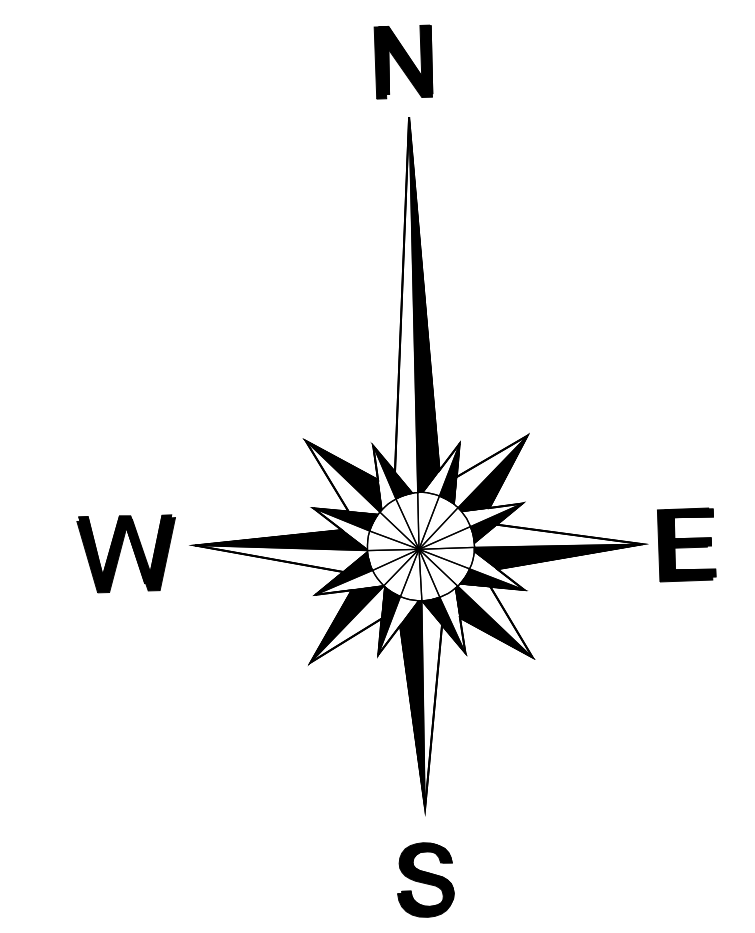
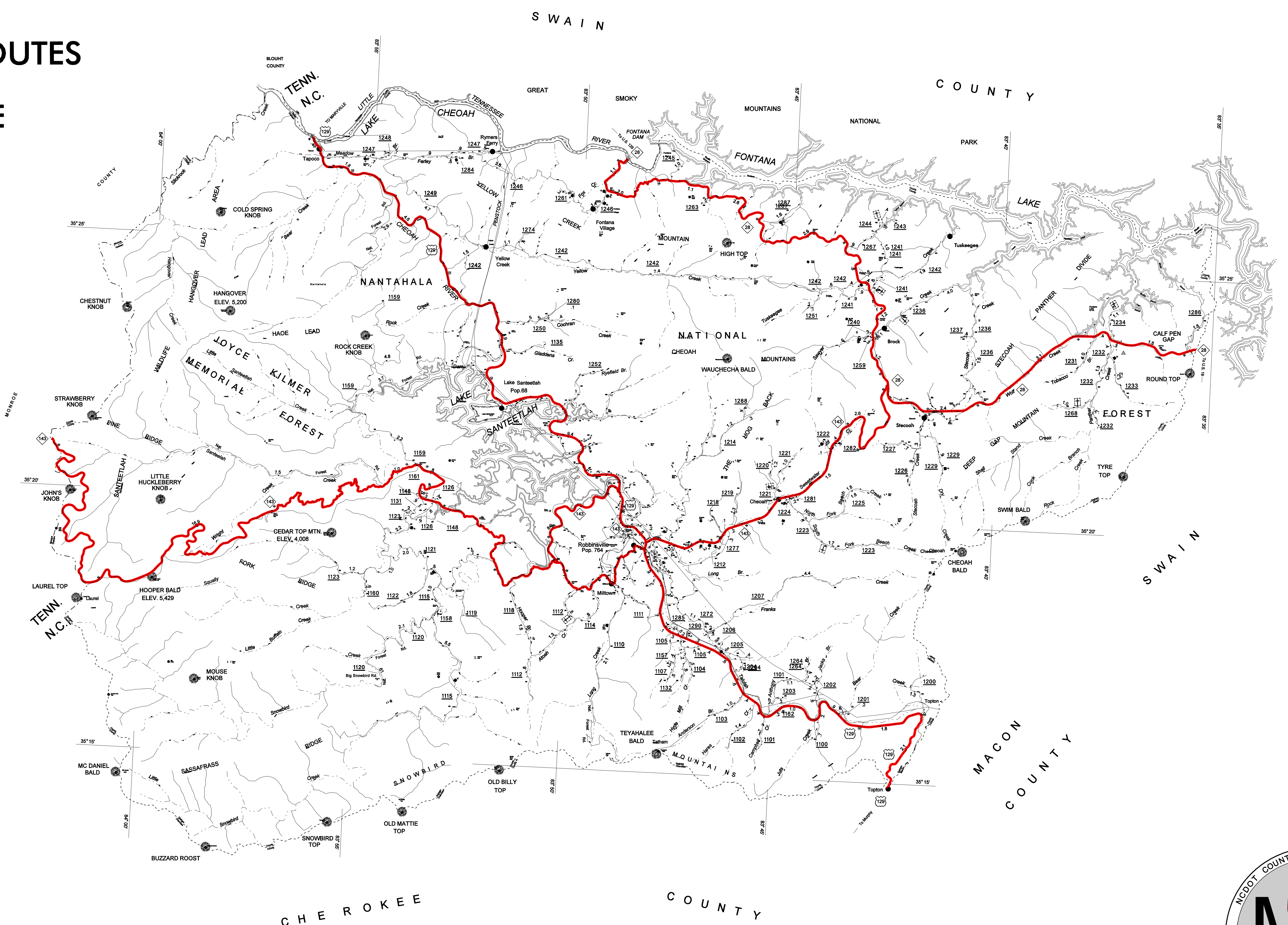


FEDERAL AID ROUTES

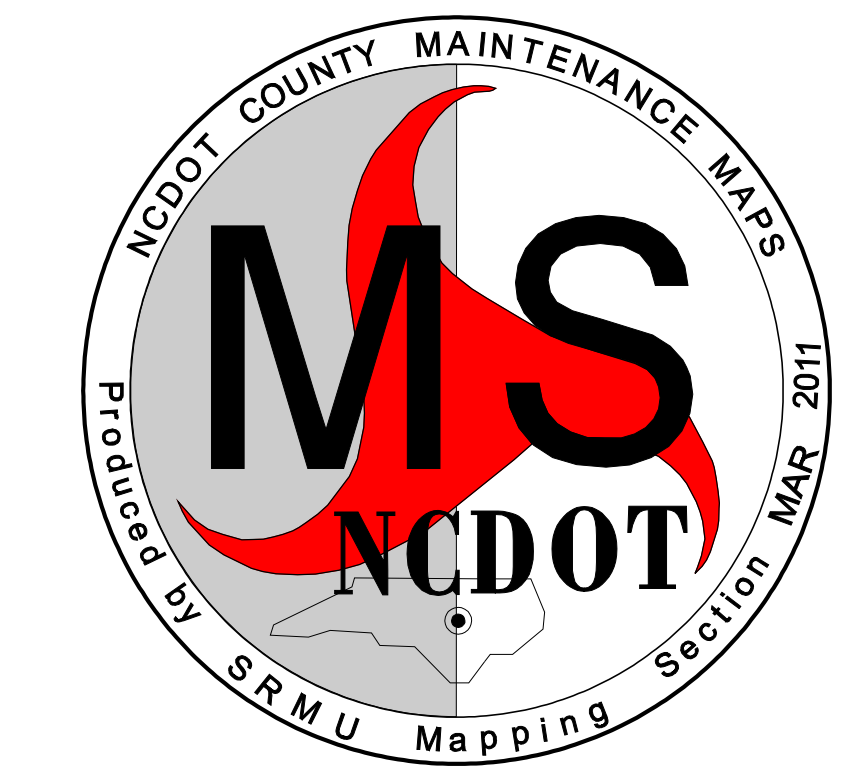
ATTACHMENT A

HIGHLIGHTED ROUTES
REPRESENT FEDERAL AID ROUTES
THAT ARE NOT ELIGIBLE
FOR RELEASE



[Symbol]	PRIMITIVE OR UNIMPROVED ROAD
[Symbol]	GRADED AND DRAINED ROAD
[Symbol]	SOIL/GRAVEL OR STONE SURFACED ROAD
[Symbol]	HARD SURFACED ROAD
[Symbol]	4 LANE UNDIVIDED HIGHWAY
[Symbol]	DIVIDED HIGHWAY
[Symbol]	HIGHWAY WITH FRONTAGE ROADS
[Symbol]	FCA FULL CONTROL ACCESS
[Symbol]	NON-SYSTEM ROAD
[Symbol]	PROJECTED LOCATION
[Symbol]	INTERSECTION DISTANCE
[Symbol]	TRAFFIC CIRCLE
[Symbol]	HIGHWAY INTERCHANGE
[Symbol]	DETAILED HIGHWAY INTERCHANGE
[Symbol]	ROAD THROUGH MOUNTAIN PASS
[Symbol]	HIGHWAY BRIDGE
[Symbol]	UNDERPASS
[Symbol]	OVERPASS
[Symbol]	DRAW SPAN ON BRIDGE
[Symbol]	HIGHWAY TUNNEL
[Symbol]	FORD
[Symbol]	INTERSTATE HIGHWAY
[Symbol]	U.S. NUMBERED HIGHWAY
[Symbol]	N.C. NUMBERED HIGHWAY
[Symbol]	U.S. NUMBERED BICYCLE ROUTE
[Symbol]	N.C. NUMBERED BICYCLE ROUTE
[Symbol]	INTERSTATE INTERCHANGE NUMBER
[Symbol]	SECONDARY ROAD NUMBER
[Symbol]	CABLE
[Symbol]	RAILROAD ANY NUMBER OF TRACKS USED BY SINGLE OPERATING COMPANY
[Symbol]	RAILROAD ANY NUMBER OF TRACKS USED BY MORE THAN ONE OPERATION COMPANY ON SAME OR ADJACENT RIGHTS-OF-WAY
[Symbol]	RAILROAD STATION
[Symbol]	RAILROAD TUNNEL
[Symbol]	RAILROAD TUNNEL
[Symbol]	INSET AREA
[Symbol]	URBAN EXTENSION
[Symbol]	BOUNDARY LINE
[Symbol]	RESERVATION OR PARK BOUNDARY
[Symbol]	CITY LIMIT
[Symbol]	NATIONAL FOREST BOUNDARY
[Symbol]	STATE FOREST BOUNDARY
[Symbol]	FEDERAL GAMELAND BOUNDARY
[Symbol]	STATE GAMELAND BOUNDARY
[Symbol]	MILITARY RESERVATION BOUNDARY
[Symbol]	COUNTY LINE
[Symbol]	STATE LINE
[Symbol]	INCORPORATED CITY OR VILLAGE, (GENERALIZED)
[Symbol]	FREE OR TOLL FERRY
[Symbol]	CANAL
[Symbol]	NARROW STREAM
[Symbol]	WIDE STREAM
[Symbol]	DAM WITH LOCK
[Symbol]	DAM
[Symbol]	RESERVOIR, POND, OR LAKE
[Symbol]	COMMUNITY AND TOWN CENTER
[Symbol]	COUNTY SEAT
[Symbol]	SCHOOL
[Symbol]	COLLEGE OR UNIVERSITY
[Symbol]	HOSPITAL
[Symbol]	CHURCH
[Symbol]	CHURCH WITH CEMETERY
[Symbol]	CEMETERY
[Symbol]	PATROL STATION
[Symbol]	CORRECTIONAL OR PENAL INSTN.
[Symbol]	HIGHWAY GARAGE OR MAINT. YARD
[Symbol]	HIGHWAY DIV. OR DIST. OFFICE
[Symbol]	WEIGHT STATION
[Symbol]	MONUMENT-SMALL, HISTORICAL SITE
[Symbol]	LIGHTHOUSE
[Symbol]	MOUNTAIN PEAK
[Symbol]	REST AREA
[Symbol]	TRIANGULATION STATION
[Symbol]	COAST GUARD STATION
[Symbol]	MILITARY AIRFIELD
[Symbol]	COMMERCIAL OR MUNICIPAL FIELD
[Symbol]	HANGAR ON FIELD
[Symbol]	LANDING STRIP
[Symbol]	MARKED AUXILIARY FIELD

[Red Line]	INCLUDES: INTERSTATES, FREEWAYS, EXPRESSWAYS, PRINCIPAL ARTERIALS, MINOR ARTERIALS & MAJOR COLLECTORS
[Green Area]	EXISTING URBAN AREA
[Orange Area]	SMOOTHED AREA
APPROVED BY FHWA FEB. 14, 2006	

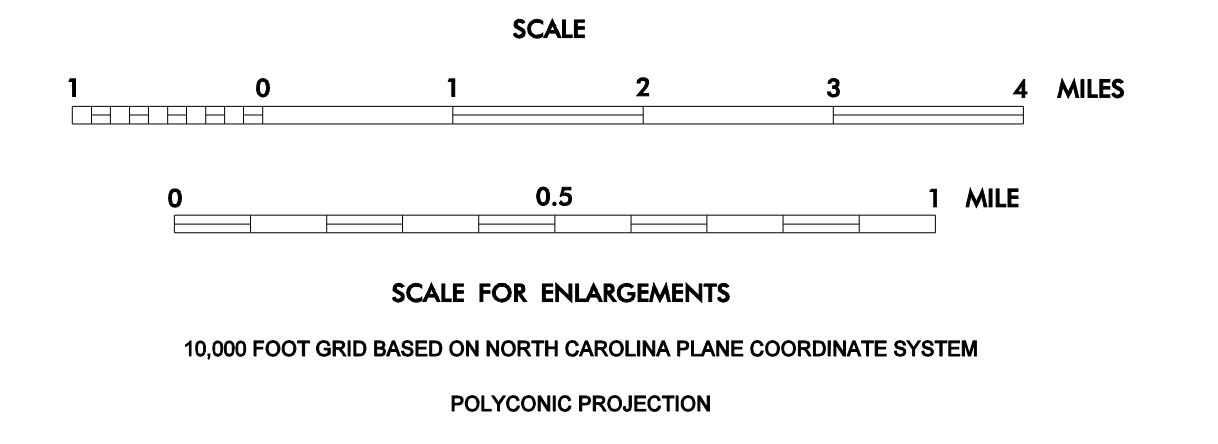


GRAHAM COUNTY

NORTH CAROLINA

PREPARED BY THE
NORTH CAROLINA DEPARTMENT OF TRANSPORTATION
STATE ROAD MAINTENANCE UNIT - MAPPING AND INFORMATION SECTION

IN COOPERATION WITH THE
U.S. DEPARTMENT OF TRANSPORTATION
FEDERAL HIGHWAY ADMINISTRATION



COPIES OF THIS MAP ARE AVAILABLE TO THE PUBLIC AT A NOMINAL COST. ADDRESS: N.C. DEPARTMENT OF TRANSPORTATION, STATE ROAD MAINTENANCE UNIT, 3801 CARE SANDHURST CT., ROLAND, N.C. 27090

REVISED