



STATE OF NORTH CAROLINA
DEPARTMENT OF TRANSPORTATION

MICHAEL F. EASLEY
GOVERNOR

Thursday, 13 November, 2008

LYNDO TIPPETT
SECRETARY

MEMORANDUM TO: Mr. Richard E. Greene, Jr., P.E.
Division Engineer
Division 4

FROM: Information, Mapping, and Graphics Unit

SUBJECT: 2008 District 2 Road Sytem Changes

The Road Inventory Information Section has been authorized to make the following changes to the state road system as indicated below. We request that you make similar changes to the related maps and files in your Division and District offices, and install appropriate road number signs if necessary. We have updated our records and county maps accordingly. If our system changes do not conform to the actual conditions in the field, please return this memorandum with recommendations.

Municipality	County	Approval Date
ROCKY MOUNT	NASH	9/4/2008

Inquires about changes should be referred to one of the following: Ron Tucker at (919) 212-6080 or Tom Schroder at (919) 212-6090. If you have further questions, please contact Hardee Cox, Road Inventory Information Section Manager at (919) 212-6060. Thank you for your assistance.

HRC
enclosures ()

- cc: BSIP
- Bridge Maintenance
- Division Right of Way
- GIS
- Pavement Management
- Permit Unit
- State Road Maintenance
- Traffic Engineering
- Traffic Surveys

2008 ROAD SYSTEM CHANGES

MUNICIPALITY	COUNTY	APPROVAL DATE	NEW NUMBER	EXISTING NUMBER	STREET NAME	LENGTH (miles)	TYPE OF CHANGE	REMARKS (See Attached Map)
ROCKY MOUNT	EDGEcombe	9/4/2008		SR 1167		0.10	SYSTEM DELETION VIA MUNICIPAL AGREEMENT	MAP , SEGMENT
ROCKY MOUNT	EDGEcombe	9/4/2008		SR 1234		0.52	SYSTEM DELETION VIA MUNICIPAL AGREEMENT	MAP , SEGMENT
ROCKY MOUNT	EDGEcombe	9/4/2008		SR 1401		1.60	SYSTEM DELETION VIA MUNICIPAL AGREEMENT	MAP , SEGMENT
ROCKY MOUNT	EDGEcombe	9/4/2008		SR 1442		1.20	SYSTEM DELETION VIA MUNICIPAL AGREEMENT	MAP , SEGMENT
ROCKY MOUNT	EDGEcombe	9/4/2008		SR 1443		0.10	SYSTEM DELETION VIA MUNICIPAL AGREEMENT	MAP , SEGMENT
ROCKY MOUNT	EDGEcombe	9/4/2008		SR 1444		0.16	SYSTEM DELETION VIA MUNICIPAL AGREEMENT	MAP , SEGMENT
ROCKY MOUNT	EDGEcombe	9/4/2008		SR 1158		1.42	SYSTEM DELETION VIA MUNICIPAL AGREEMENT	MAP , SEGMENT
ROCKY MOUNT	NASH	9/4/2008		SR 1781		0.17	SYSTEM DELETION VIA MUNICIPAL AGREEMENT	MAP , SEGMENT
ROCKY MOUNT	NASH	9/4/2008		SR 1598		0.47	SYSTEM DELETION VIA MUNICIPAL AGREEMENT	MAP , SEGMENT
ROCKY MOUNT	NASH	9/4/2008		SR 1611		0.71	SYSTEM DELETION VIA MUNICIPAL AGREEMENT	MAP , SEGMENT
ROCKY MOUNT	NASH	9/4/2008		SR 1667		0.35	SYSTEM DELETION VIA MUNICIPAL AGREEMENT	MAP , SEGMENT
ROCKY MOUNT	NASH	9/4/2008		SR 1694		0.30	SYSTEM DELETION VIA MUNICIPAL AGREEMENT	MAP , SEGMENT
ROCKY MOUNT	NASH	9/4/2008		SR 1780		0.11	SYSTEM DELETION VIA MUNICIPAL AGREEMENT	MAP , SEGMENT

MUNICIPALITY	COUNTY	APPROVAL DATE	NEW NUMBER	EXISTING NUMBER	STREET NAME	LENGTH (miles)	TYPE OF CHANGE	REMARKS (See Attached Map)
ROCKY MOUNT	NASH	9/4/2008		SR 2318		0.24	SYSTEM DELETION VIA MUNICIPAL AGREEMENT	MAP , SEGMENT
ROCKY MOUNT	NASH	9/4/2008		SR 1782		0.21	SYSTEM DELETION VIA MUNICIPAL AGREEMENT	MAP , SEGMENT
ROCKY MOUNT	NASH	9/4/2008		SR 1829		0.11	SYSTEM DELETION VIA MUNICIPAL AGREEMENT	MAP , SEGMENT
ROCKY MOUNT	NASH	9/4/2008		SR 1830		0.13	SYSTEM DELETION VIA MUNICIPAL AGREEMENT	MAP , SEGMENT
ROCKY MOUNT	NASH	9/4/2008		SR 1845		0.40	SYSTEM DELETION VIA MUNICIPAL AGREEMENT	MAP , SEGMENT
ROCKY MOUNT	NASH	9/4/2008		SR 2302		0.13	SYSTEM DELETION VIA MUNICIPAL AGREEMENT	MAP , SEGMENT
ROCKY MOUNT	NASH	9/4/2008		SR 2307		0.18	SYSTEM DELETION VIA MUNICIPAL AGREEMENT	MAP , SEGMENT
ROCKY MOUNT	NASH	9/4/2008		SR 2308		0.13	SYSTEM DELETION VIA MUNICIPAL AGREEMENT	MAP , SEGMENT
ROCKY MOUNT	NASH	9/4/2008		SR 2309		0.24	SYSTEM DELETION VIA MUNICIPAL AGREEMENT	MAP , SEGMENT
ROCKY MOUNT	NASH	9/4/2008		SR 2316		0.22	SYSTEM DELETION VIA MUNICIPAL AGREEMENT	MAP , SEGMENT
ROCKY MOUNT	NASH	9/4/2008		SR 2317		0.26	SYSTEM DELETION VIA MUNICIPAL AGREEMENT	MAP , SEGMENT
ROCKY MOUNT	NASH	9/4/2008		SR 1699		0.47	SYSTEM DELETION VIA MUNICIPAL AGREEMENT	MAP , SEGMENT

MUN AGR: 32/0431/09-08

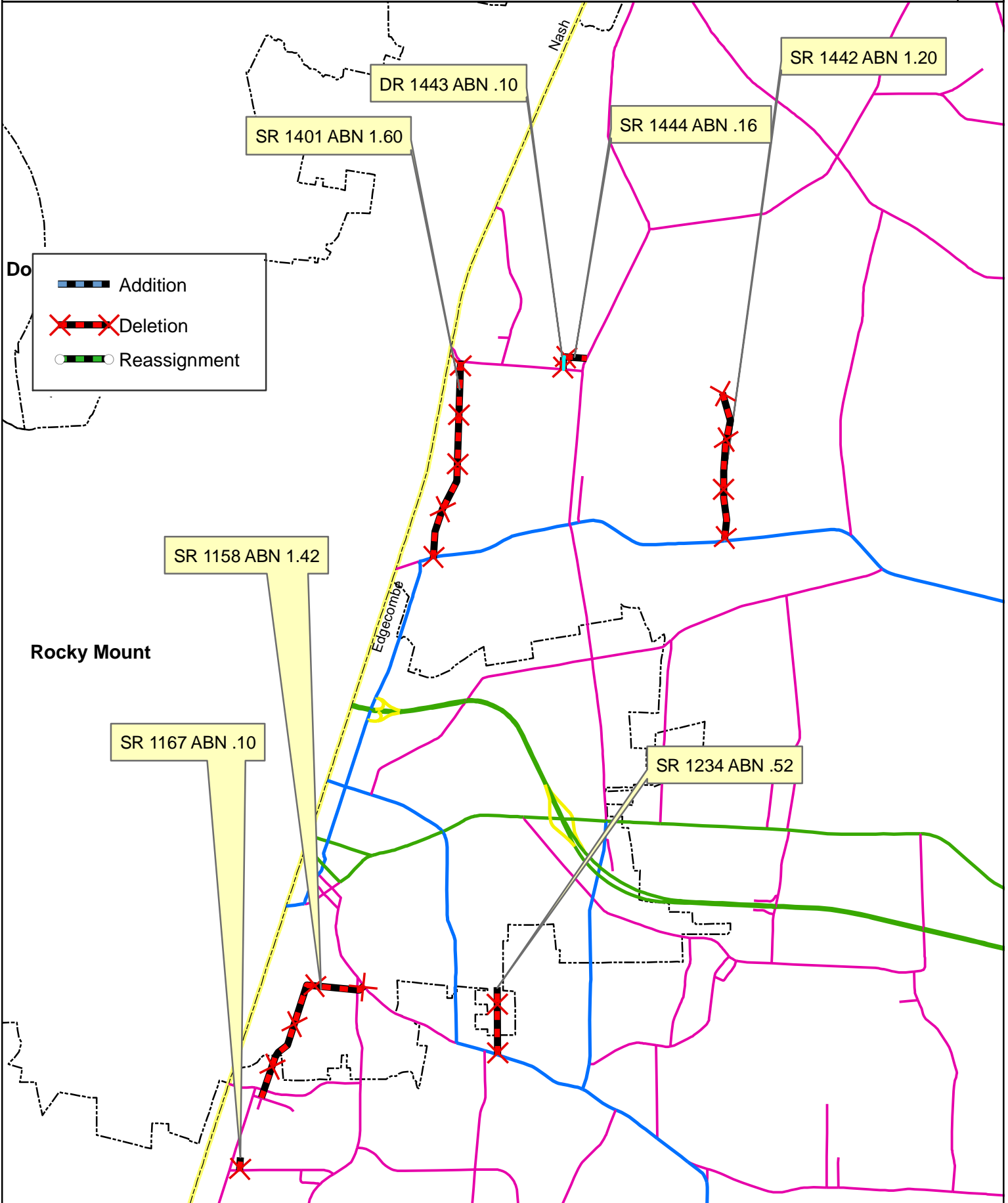
CO: EDGECOMBE

SR #: 1158 1167 1234 1401 1442




Approval Date: 09/04/08

Map Date: 11/07/08

1443 1444



Do

-  Addition
-  Deletion
-  Reassignment

DR 1443 ABN .10

SR 1401 ABN 1.60

SR 1444 ABN .16

SR 1442 ABN 1.20

SR 1158 ABN 1.42

Rocky Mount

SR 1167 ABN .10

SR 1234 ABN .52

Source: XXXXXXXX

NAME: GBW

SCALE: XXX

Map: X

MUN AGR: 32/0431/09-08

CO: NASH

SR #: 1694 1699 1611 1667 2302

Approval Date: 09/04/08

Map Date: 11/12/08

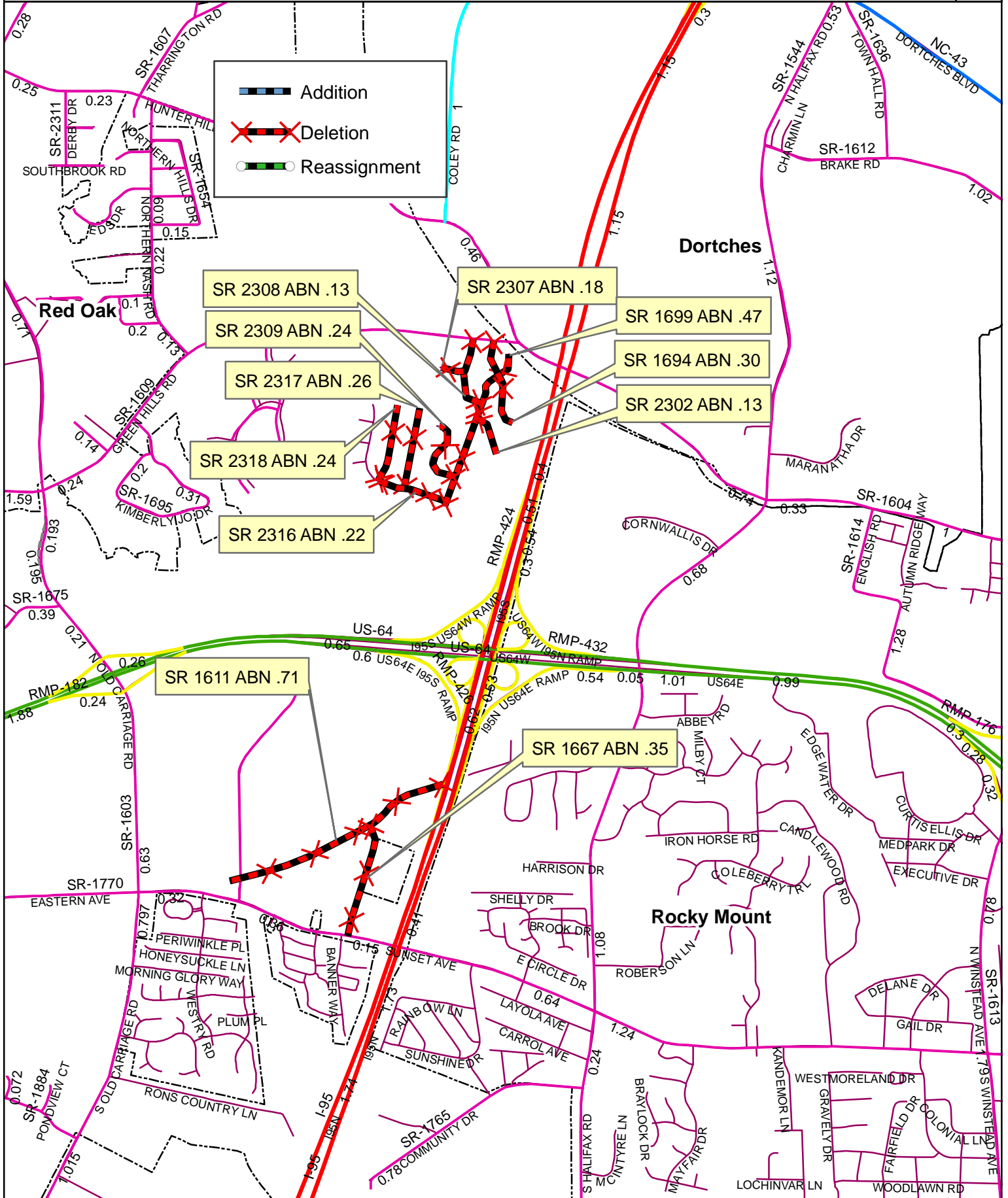
2307 2308 2309 2316 2317

2318



Legend:

- Addition
- Deletion
- Reassignment



Source: XXXXXXXX

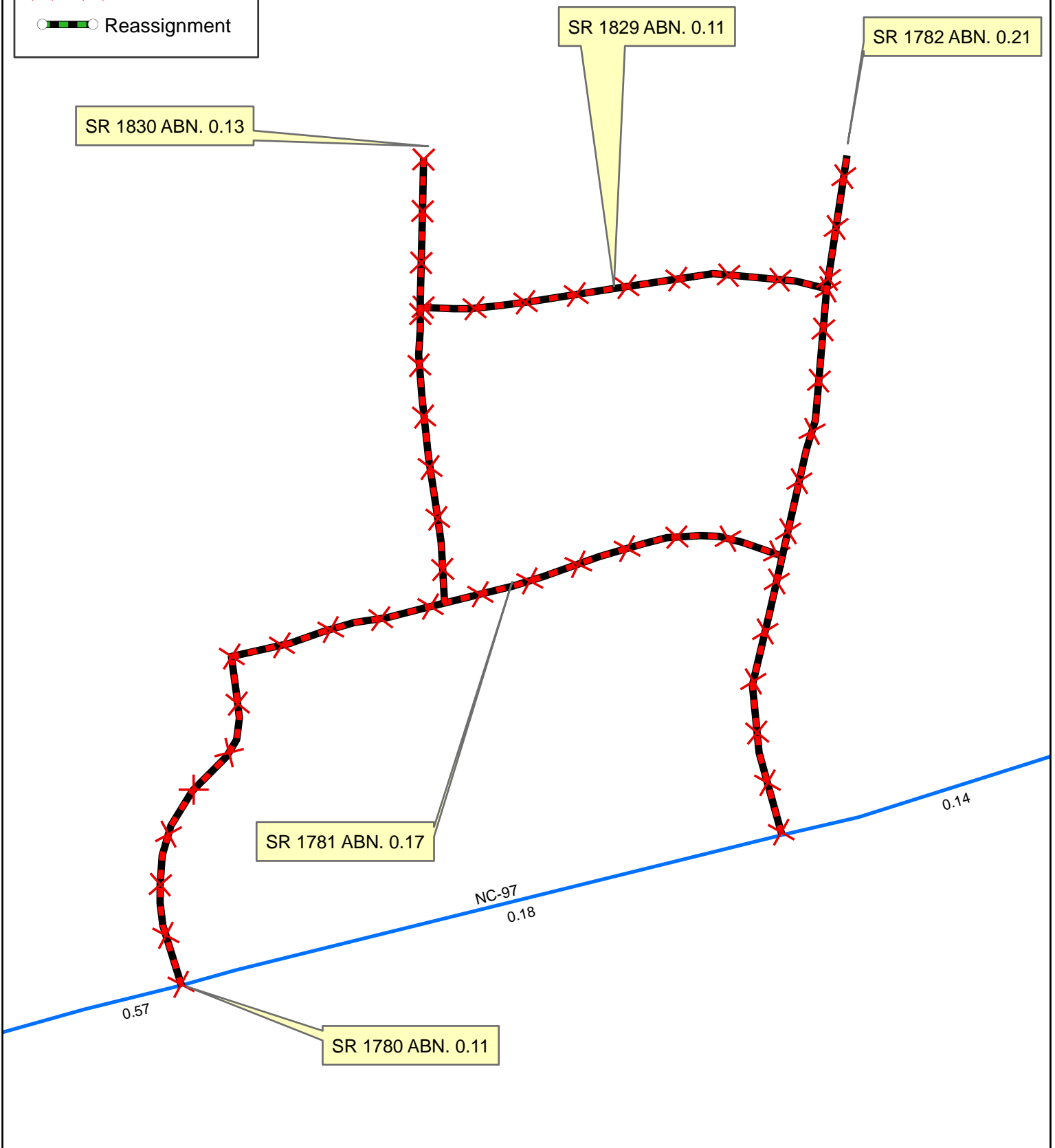
NAME: GBW

SCALE: XXX

Map: X



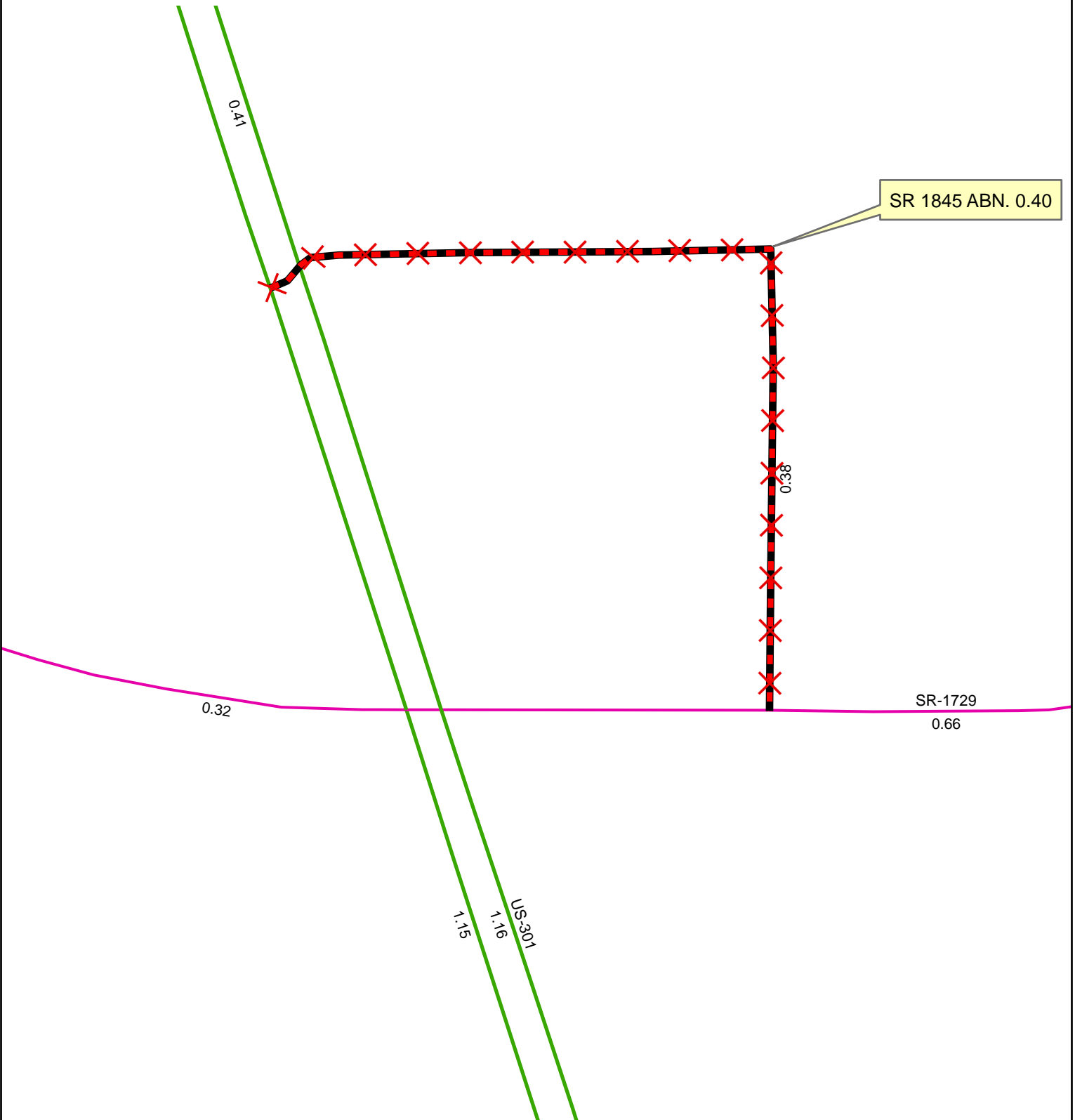
■ Addition
✕ Deletion
○ Reassignment





Legend:

- Addition
- Deletion
- Reassignment



MUN AGR: 32/0431/09-08

CO: NASH

SR #: 1598

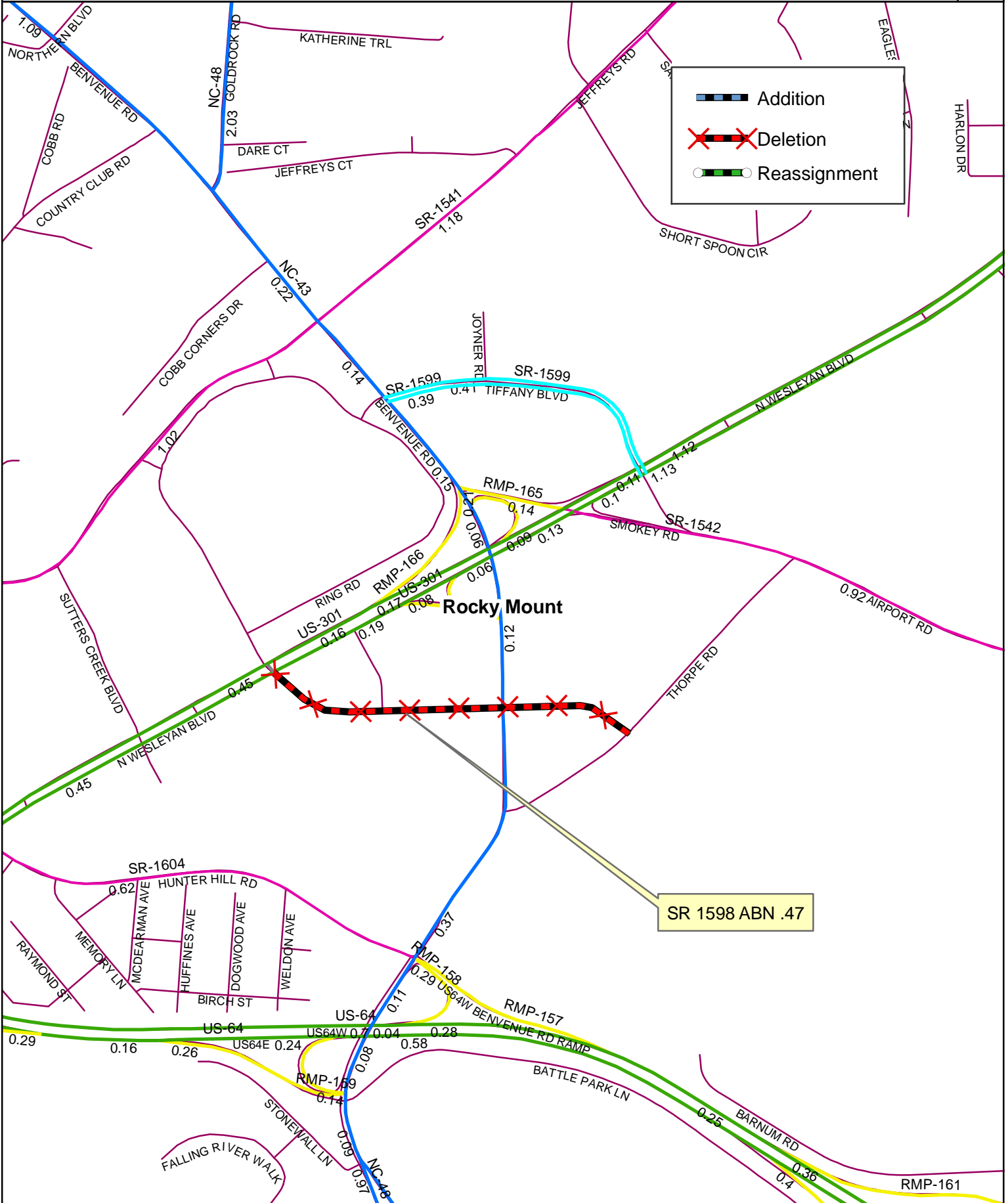
Approval Date: 09/04/08

Map Date: 11/12/08



Legend:

- Addition
- Deletion
- Reassignment



Rocky Mount

SR 1598 ABN .47

Source: XXXXXXXX

NAME: GBW

SCALE: XXX

Map: X