



STATE OF NORTH CAROLINA  
DEPARTMENT OF TRANSPORTATION

MICHAEL F. EASLEY  
GOVERNOR

Tuesday, 13 January, 2009

LYNDO TIPPETT  
SECRETARY

**MEMORANDUM TO:** Mr. Barry S. Moose, PE  
Division Engineer  
Division 10

**FROM:** Information, and Mapping Unit

**SUBJECT:** 2008 District 2 Road System Changes

The Road Inventory Information Section has been authorized to make the following changes to the state road system as indicated below. We request that you make similar changes to the related maps and files in your Division and District offices, and install appropriate road number signs if necessary. We have updated our records and county maps accordingly. If our system changes do not conform to the actual conditions in the field, please return this memorandum with recommendations.

Petition Number	County	Approval Date
48944	MECKLENBURG	12/11/2008

Inquires about changes should be referred to one of the following: For Primary Roads call Paulette Smith at (919)-212-6100, and for Secondary Roads call Ron Tucker at (919)-212-6085. Thank you for your assistance.

JLC  
enclosures ( )

cc: BSIP  
Bridge Maintenance  
Division Right of Way  
GIS  
Pavement Management  
Permit Unit  
State Road Maintenance  
Traffic Engineering  
Traffic Surveys

# 2008 ROAD SYSTEM CHANGES

<b>PETITION NUMBER</b>	<b>COUNTY</b>	<b>APPROVAL DATE</b>	<b>NEW NUMBER</b>	<b>EXISTING NUMBER</b>	<b>STREET NAME</b>	<b>LENGT H</b>	<b>TYPE OF CHANGE</b>	<b>REMARKS (See Attached Map)</b>
48944	MECKLENBURG	12/11/2008	SR 5935		BARRANDS LANE	0.50	SYSTEM ADDITION VIA PETITION	MAP , SEGMENT
48944	MECKLENBURG	12/11/2008	SR 5934		ROWE COURT	0.07	SYSTEM ADDITION VIA PETITION	MAP , SEGMENT
48944	MECKLENBURG	12/11/2008	SR 5933		GAILES DRIVE	0.18	SYSTEM ADDITION VIA PETITION	MAP , SEGMENT
48944	MECKLENBURG	12/11/2008	SR 5932		SEDGEBURN DRIVE	0.28	SYSTEM ADDITION VIA PETITION	MAP , SEGMENT
48944	MECKLENBURG	12/11/2008	SR 5931		HERMSLEY ROAD	0.47	SYSTEM ADDITION VIA PETITION	MAP , SEGMENT

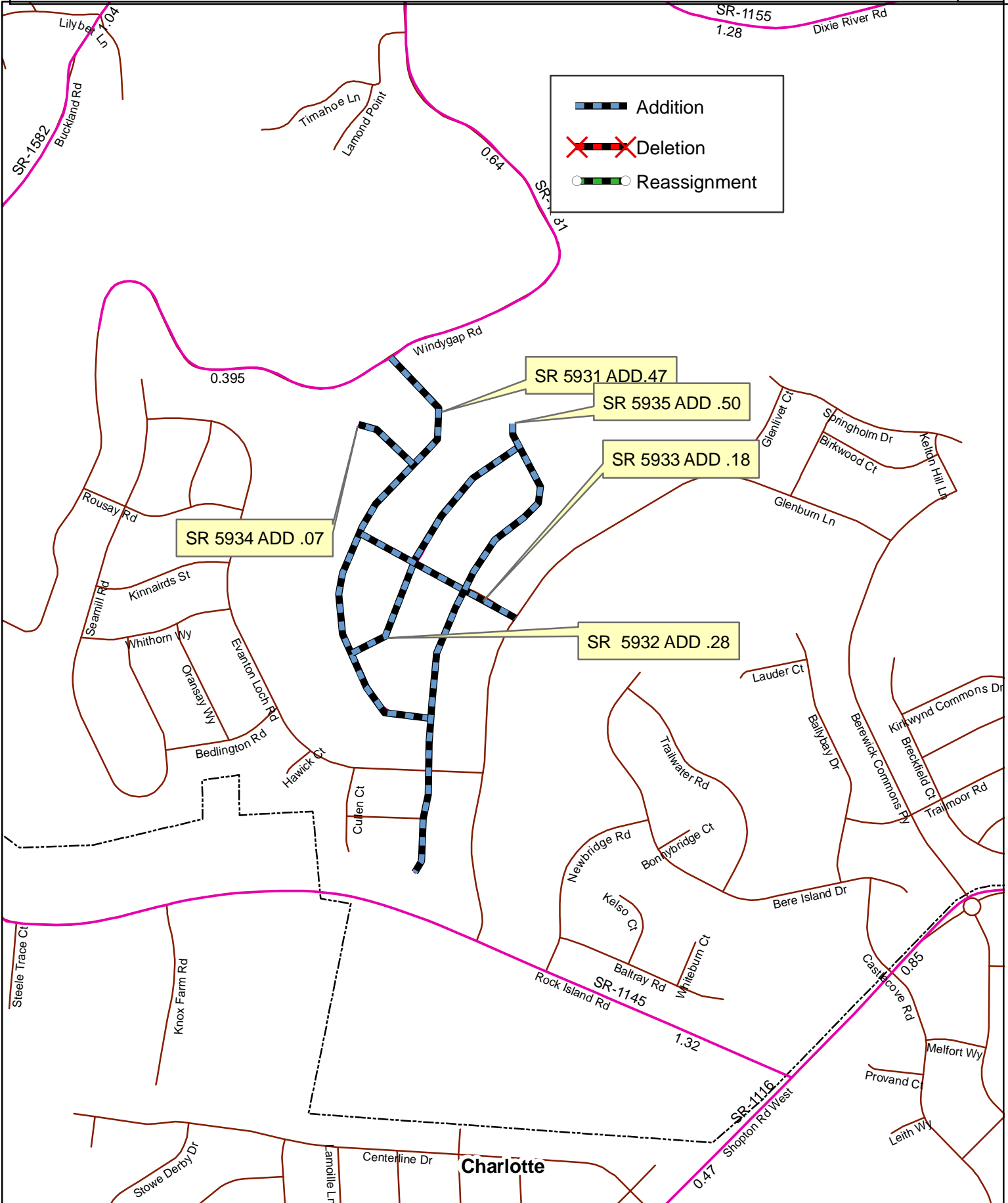
PETITION: 48944

CO: MECKLENBURG

SR #: 5931 5932 5933 5934 5935

Approval Date: 12/11/08

Map Date: 12/23/08



Source: XXXXXXXX

NAME: GBW

SCALE: XXX

Map: X