



STATE OF NORTH CAROLINA
DEPARTMENT OF TRANSPORTATION

Beverly Eaves Perdue
GOVERNOR

Thursday, 21 May, 2009

EUGENE A. CONTI, JR.
SECRETARY

MEMORANDUM TO: Mr. Terry R. Gibson, PE
Division Engineer
Division 6

FROM: Information, and Mapping Unit

SUBJECT: 2009 District 2 Road System Changes

The Road Inventory Information Section has been authorized to make the following changes to the state road system as indicated below. We request that you make similar changes to the related maps and files in your Division and District offices, and install appropriate road number signs if necessary. We have updated our records and county maps accordingly. If our system changes do not conform to the actual conditions in the field, please return this memorandum with recommendations.

Petition Number	County	Approval Date
49076	HARNETT	4/2/2009

Inquires about changes should be referred to one of the following: For Primary Roads call Paulette Smith at (919)-212-6100, and for Secondary Roads call Ron Tucker at (919)-212-6085. Thank you for your assistance.

JLC
enclosures ()

- cc: BSIP
Bridge Maintenance
Division Right of Way
GIS
Pavement Management
Permit Unit
State Road Maintenance
Traffic Engineering
Traffic Surveys

2009 ROAD SYSTEM CHANGES

PETITION NUMBER	COUNTY	APPROVAL DATE	NEW NUMBER	EXISTING NUMBER	STREET NAME	LENGT H	TYPE OF CHANGE	REMARKS (See Attached Map)
49076	HARNETT	4/2/2009	SR 2497		NUT TREE CIRCLE	0.05	SYSTEM ADDITION VIA PETITION	MAP A, SEGMENT 1
49076	HARNETT	4/2/2009	SR 2496		COTTONADE CIRCLE	0.11	SYSTEM ADDITION VIA PETITION	MAP A, SEGMENT 1
49076	HARNETT	4/2/2009	SR 2495		UNION CIRCLE	0.22	SYSTEM ADDITION VIA PETITION	MAP A, SEGMENT 1
49076	HARNETT	4/2/2009	SR 2494		RED BID CIRCLE	0.04	SYSTEM ADDITION VIA PETITION	MAP A, SEGMENT 1
49076	HARNETT	4/2/2009	SR 2493		SILVER OAKS DRIVE	0.16	SYSTEM ADDITION VIA PETITION	MAP A, SEGMENT 1

PETITION: 49076




CO: Harnett

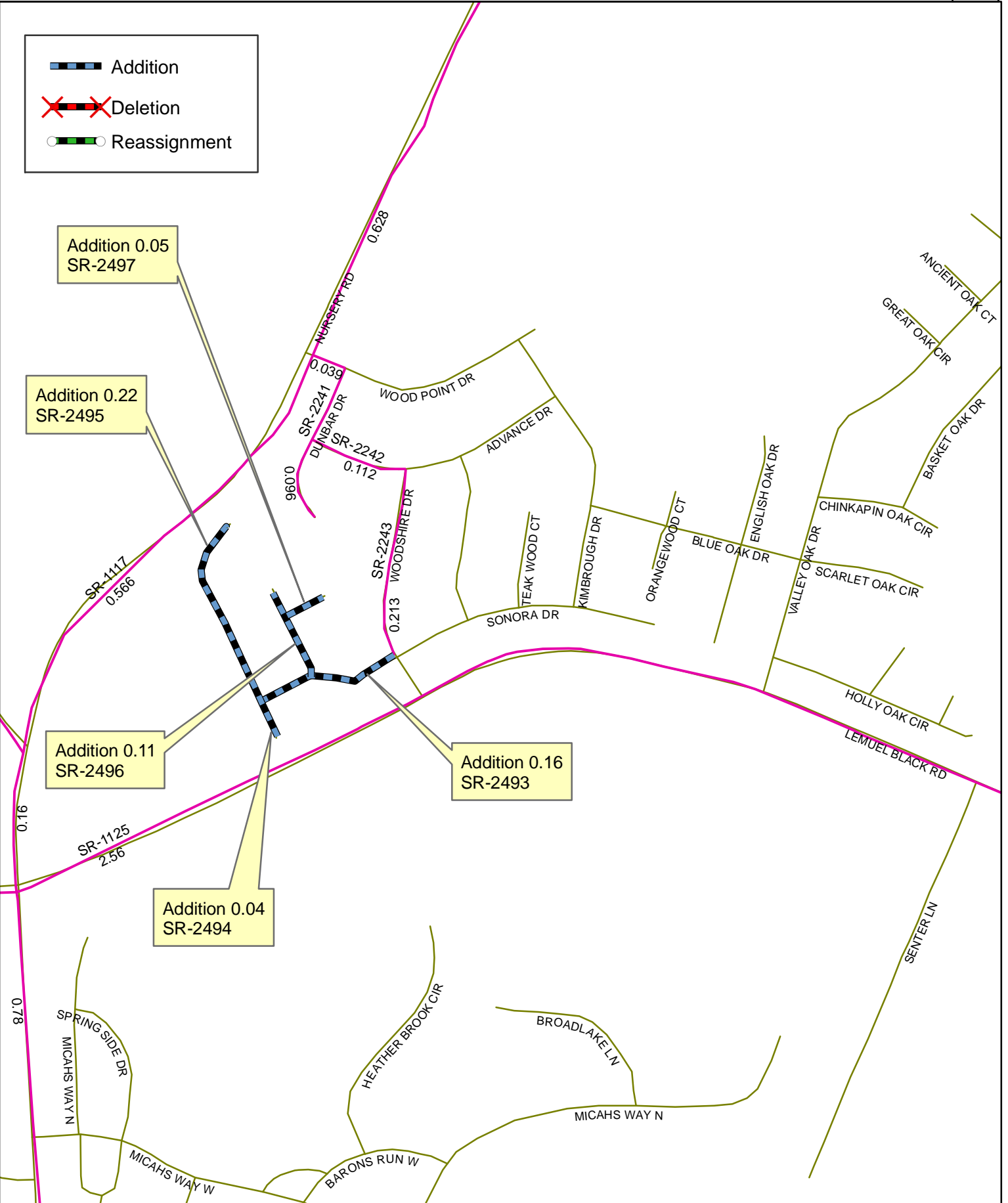
SR #: 2493, 2494, 2495, 2496, 2497

Approval Date: 04/02/2009 Map Date: 05/06/2009

Additions



 Addition
 Deletion
 Reassignment



Source: GIS

NAME: tjb

SCALE: N/A

Map: A