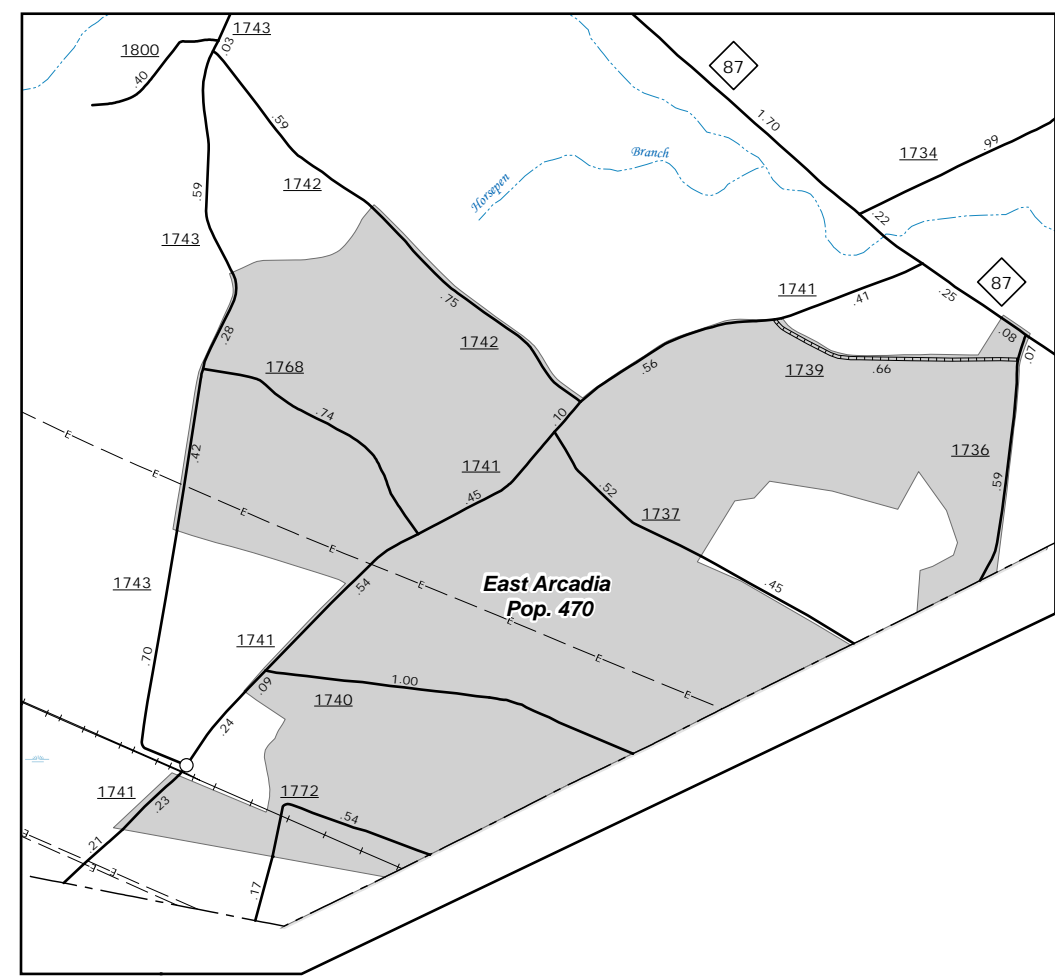
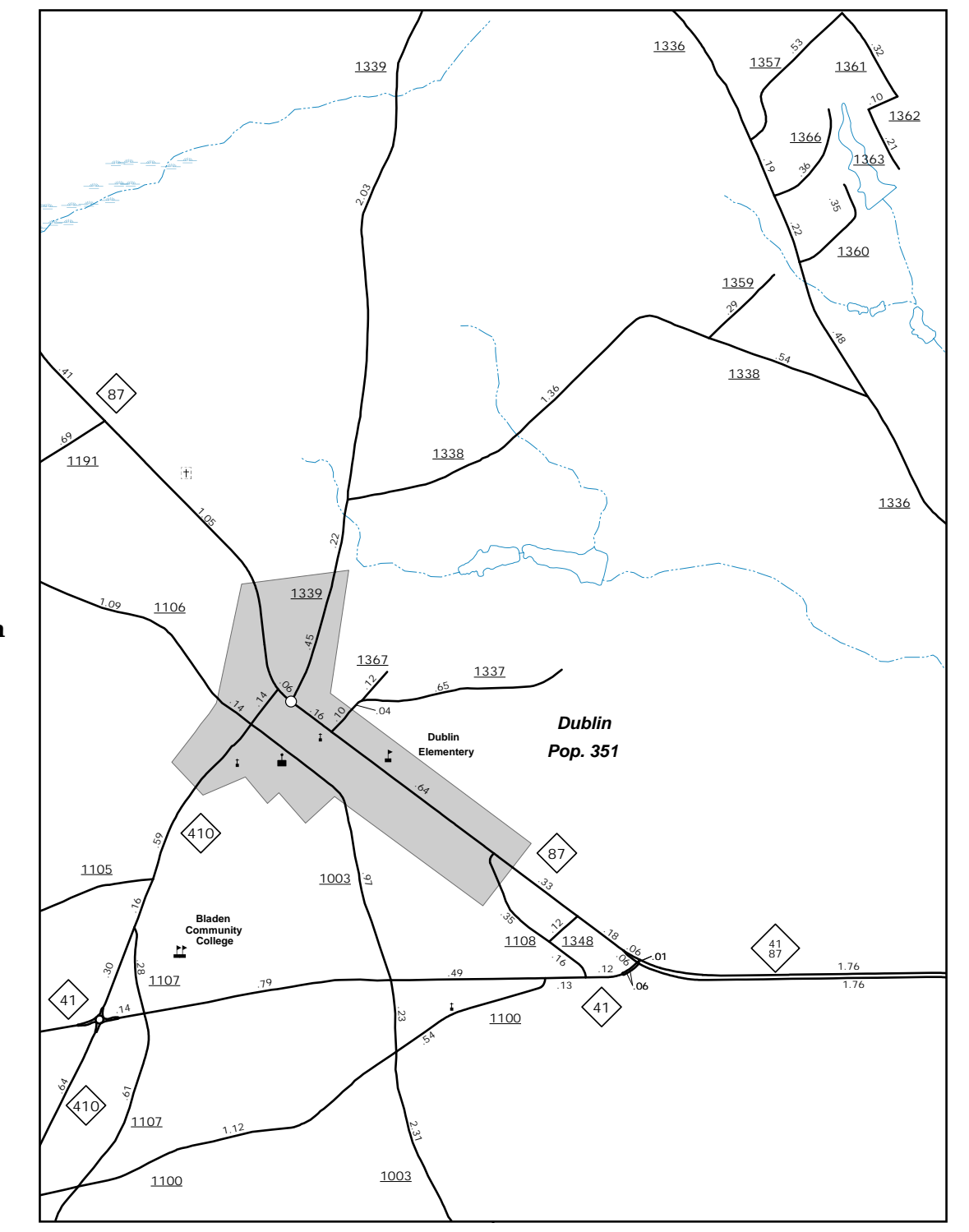


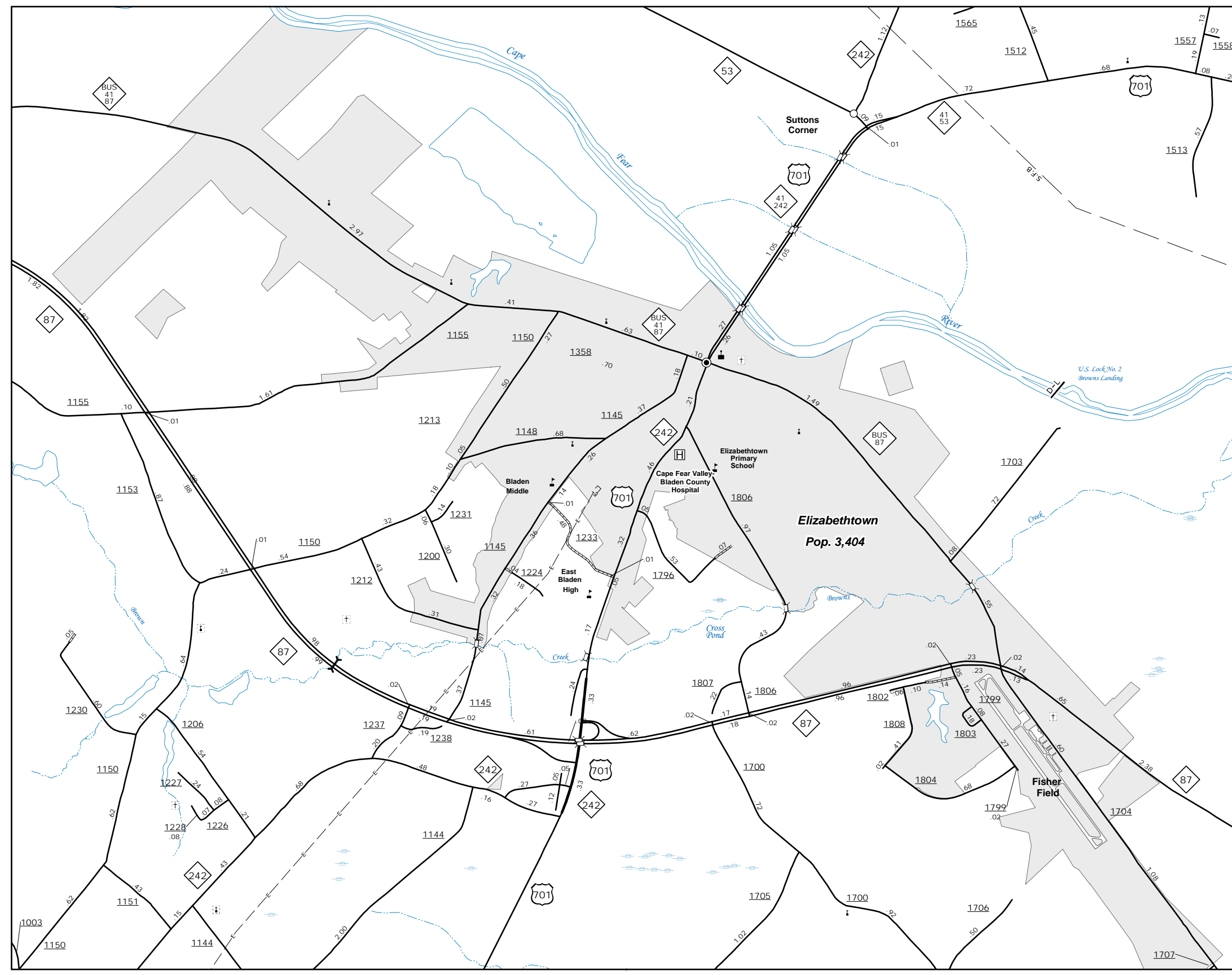
Clarkton
Pop. 820



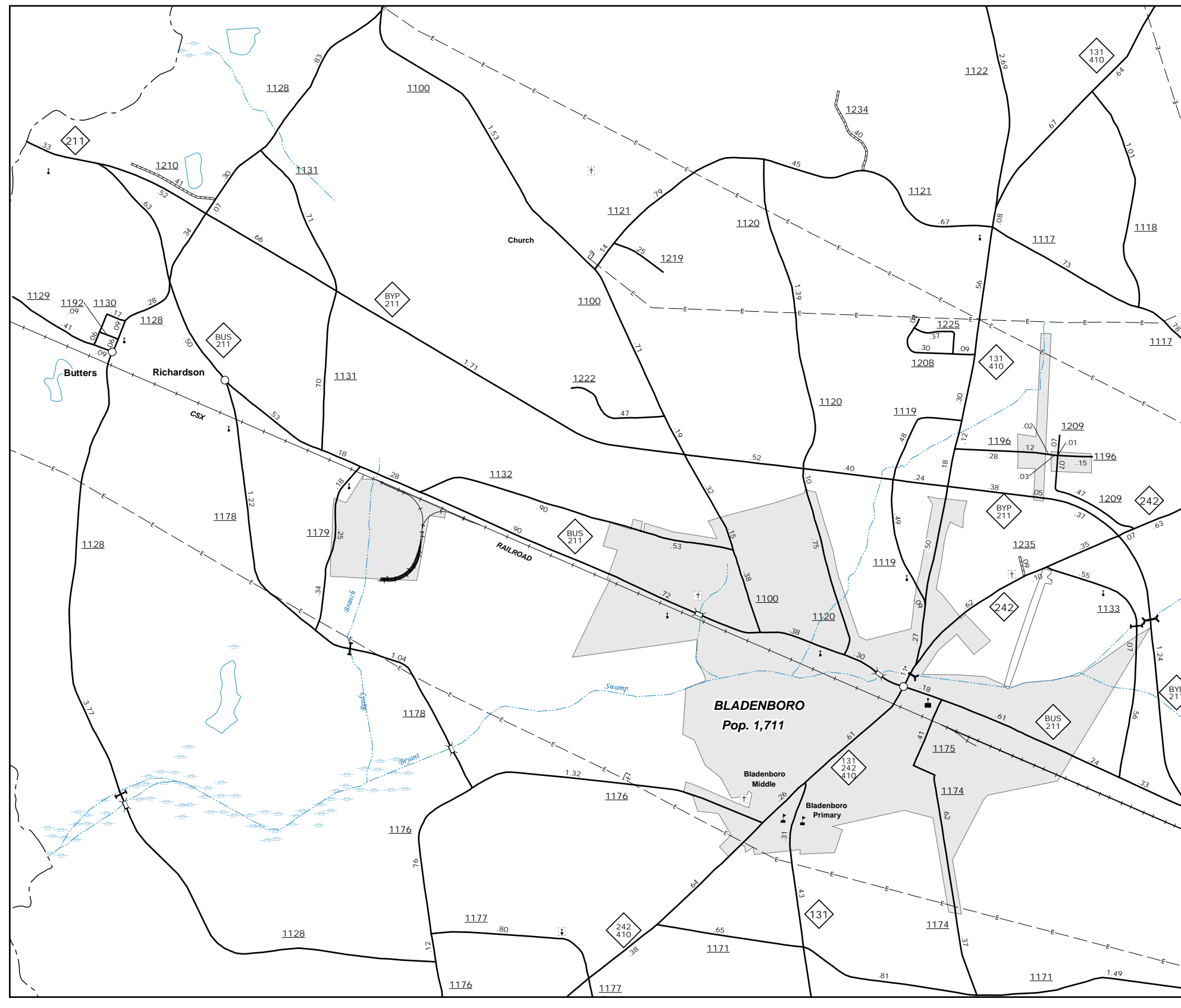
East Arcadia
Pop. 470



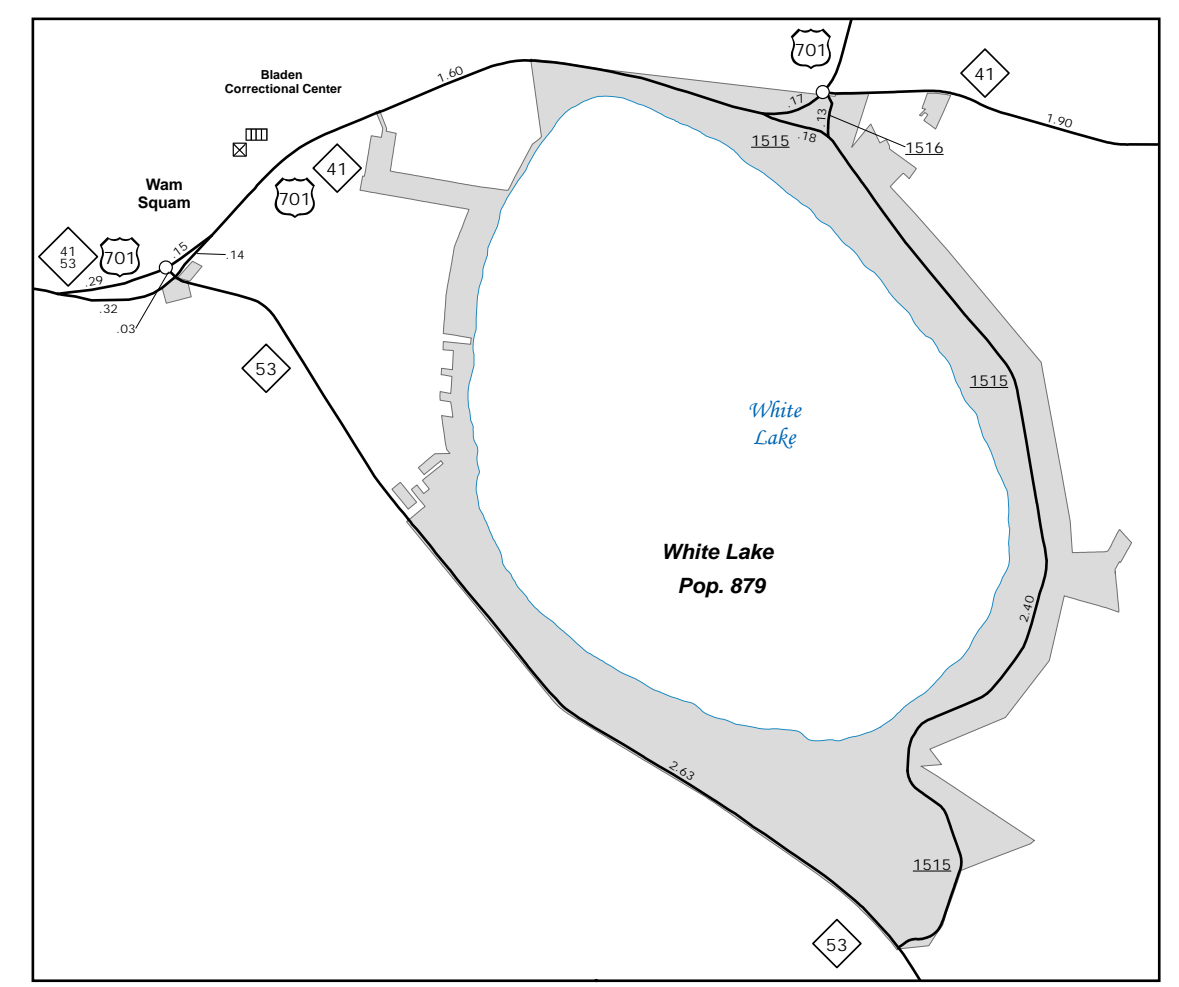
Dublin
Pop. 351



Elizabethtown
Pop. 3,404



Bladenboro
Pop. 1,711



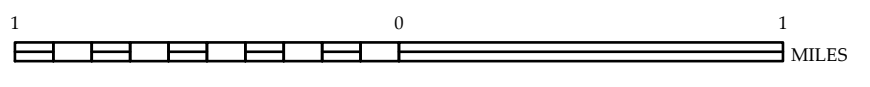
White Lake
Pop. 879

The Mapping Section's goal is to provide the most accurate and current information possible. Map data is compiled from various sources and is subject to change. The Mapping Section is not responsible for errors or omissions in the data. The Mapping Section is not responsible for errors or omissions in the data. The Mapping Section is not responsible for errors or omissions in the data.

COPIES OF THIS MAP ARE AVAILABLE FROM THE N.C. DEPARTMENT OF TRANSPORTATION, ADDRESS: MAPPING SECTION, 4809 BERRY LANE, RALEIGH, NC 27606



ENLARGED MUNICIPAL AND SUBURBAN AREAS
BLADEN COUNTY
NORTH CAROLINA
 PREPARED BY THE
 NORTH CAROLINA DEPARTMENT OF TRANSPORTATION
 OPERATIONS PROGRAM MANAGEMENT UNIT - MAPPING SECTION
 IN COOPERATION WITH THE
 U.S. DEPARTMENT OF TRANSPORTATION
 FEDERAL HIGHWAY ADMINISTRATION
 SCALE
 10,000 FOOT GRID BASED ON NORTH CAROLINA PLANE COORDINATE SYSTEM
 LAMBERT CONFORMAL CONIC PROJECTION



10,000 FOOT GRID BASED ON NORTH CAROLINA PLANE COORDINATE SYSTEM
LAMBERT CONFORMAL CONIC PROJECTION