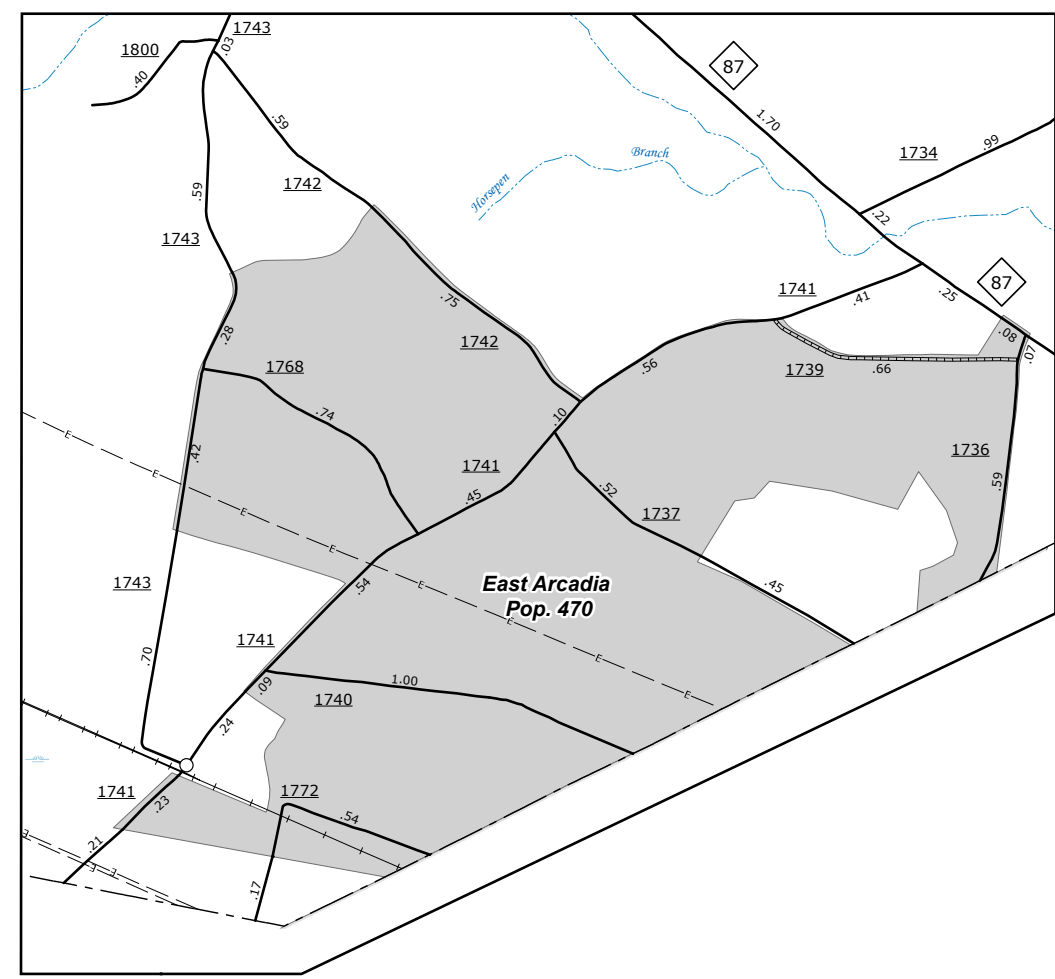
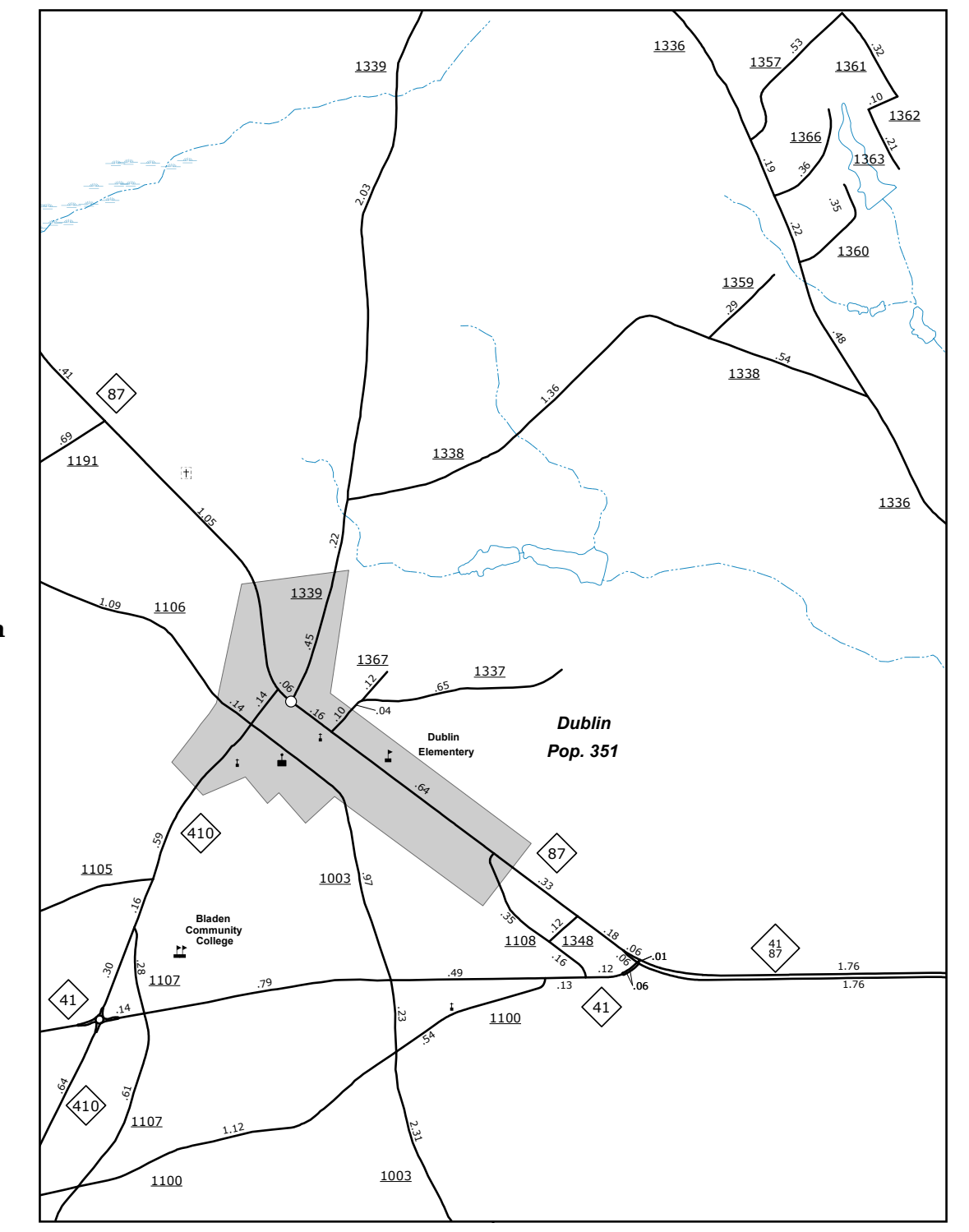


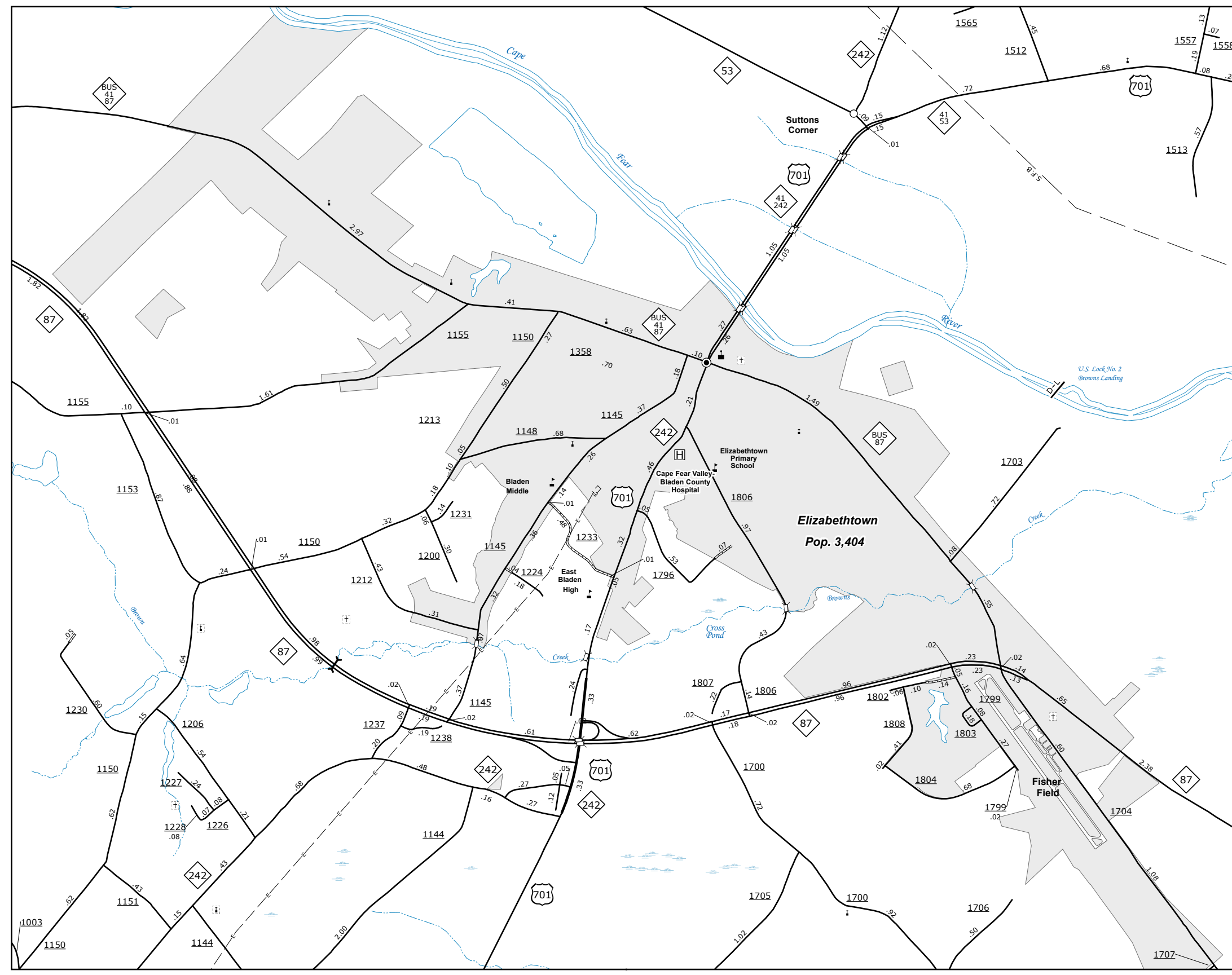
Clarkton  
Pop. 820



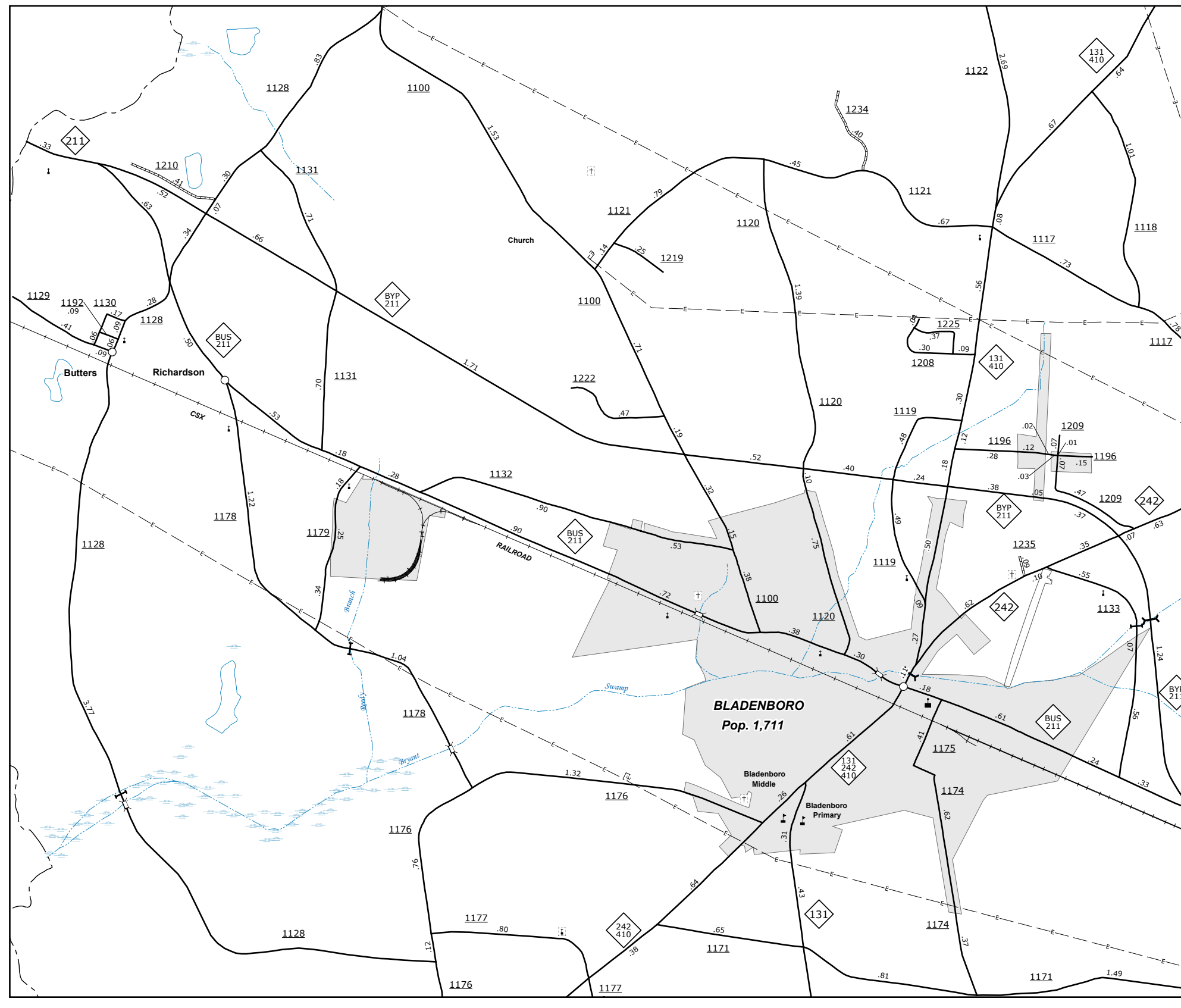
East Arcadia  
Pop. 470



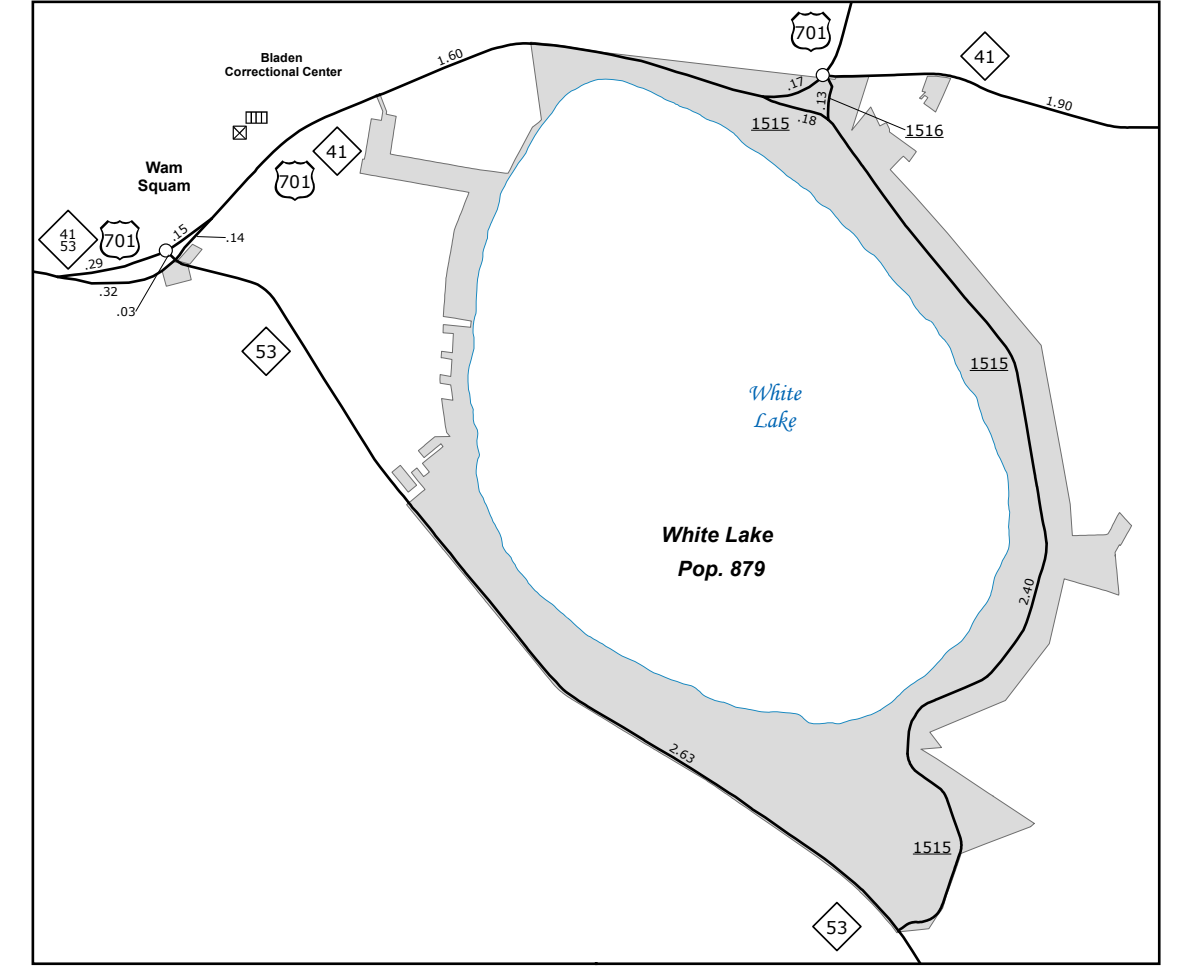
Dublin  
Pop. 351



Elizabethtown  
Pop. 3,404



Bladenboro  
Pop. 1,711



White Lake  
Pop. 879

The Mapping Section's goal is to provide the most accurate and current information possible. Map data is compiled from various sources and is subject to change. The accuracy of the data is not guaranteed. The Mapping Section is not responsible for any errors or omissions. For additional information, visit [www.ncdot.gov/transportation/mapping](http://www.ncdot.gov/transportation/mapping) and click on Data Providers or contact us by phone at (919) 835-8480.

COPIES OF THIS MAP ARE AVAILABLE FROM THE N.C. DEPARTMENT OF TRANSPORTATION, ADDRESS: MAPPING SECTION, 600 BERRY RD., RALEIGH, NC 27605



ENLARGED MUNICIPAL AND SUBURBAN AREAS  
**BLADEN COUNTY**  
**NORTH CAROLINA**  
 PREPARED BY THE  
 NORTH CAROLINA DEPARTMENT OF TRANSPORTATION  
 OPERATIONS PROGRAM MANAGEMENT UNIT - MAPPING SECTION  
 IN COOPERATION WITH THE  
 U.S. DEPARTMENT OF TRANSPORTATION  
 FEDERAL HIGHWAY ADMINISTRATION  
 SCALE  
 10,000 FOOT GRID BASED ON NORTH CAROLINA PLANE COORDINATE SYSTEM  
 LAMBERT CONFORMAL CONIC PROJECTION