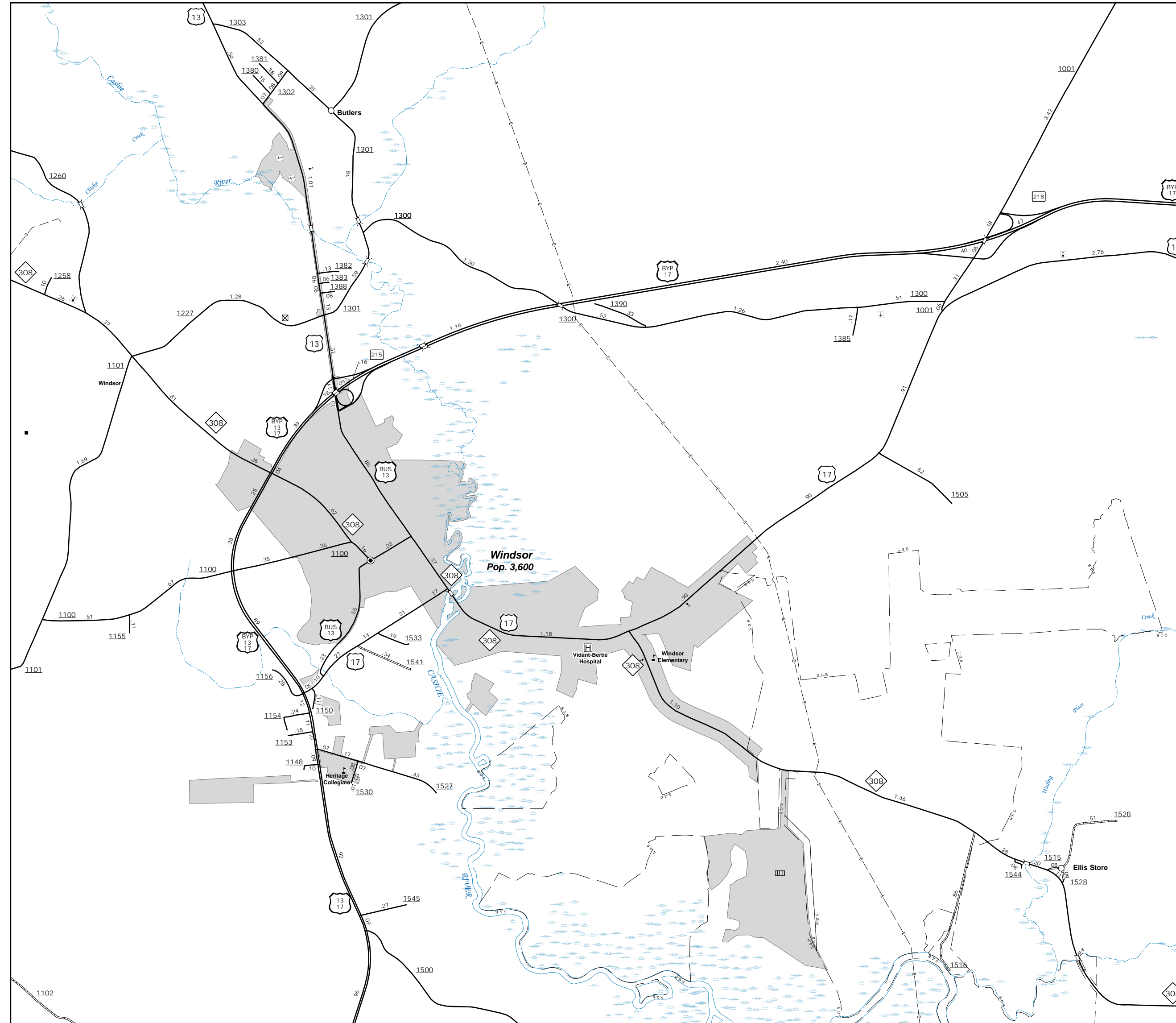
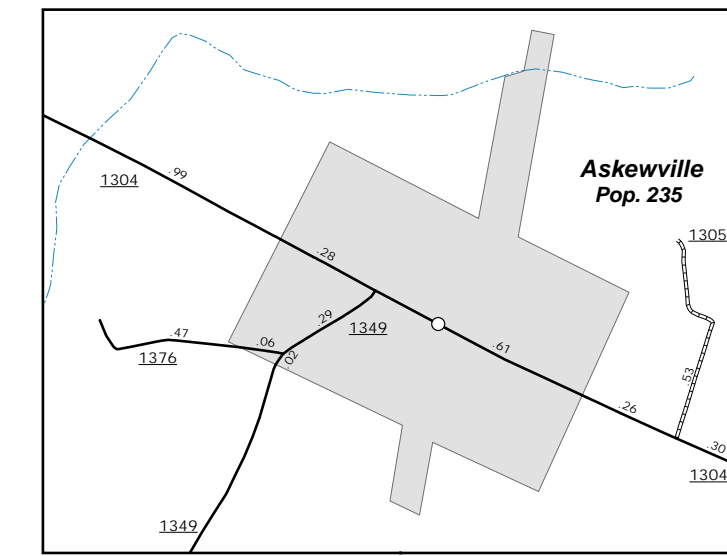


The Mapping Section's goal is to provide the most accurate and current information possible. Map data is compiled from various sources and is not guaranteed to be 100% accurate. The map includes unimproved roads and other important non-system roads.
 The information shown on this map was last updated in December 2021. For additional information, visit <http://www.ncdot.gov/transportation/mapping> and click on Data Providers or contact us by phone at (919) 855-9440.

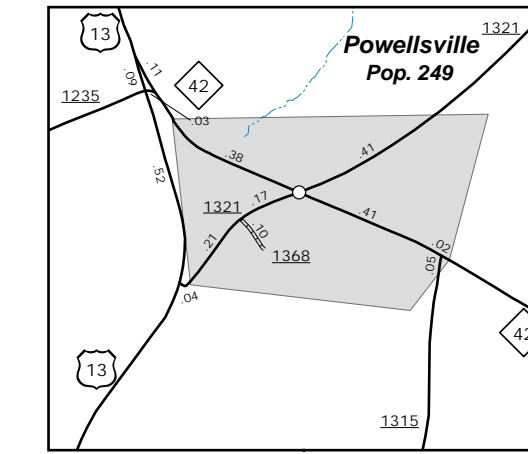
COPIES OF THIS MAP ARE AVAILABLE FOR PURCHASE AT A PUBLIC NOMINAL COST.
 ADDRESS: N.C. DEPARTMENT OF TRANSPORTATION
 MAPPING SECTION
 4809 BERTIE RD.
 WINDSOR, NC 27986



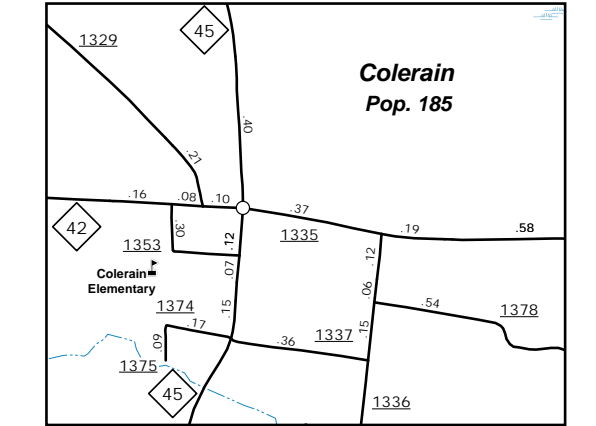
WINDSOR



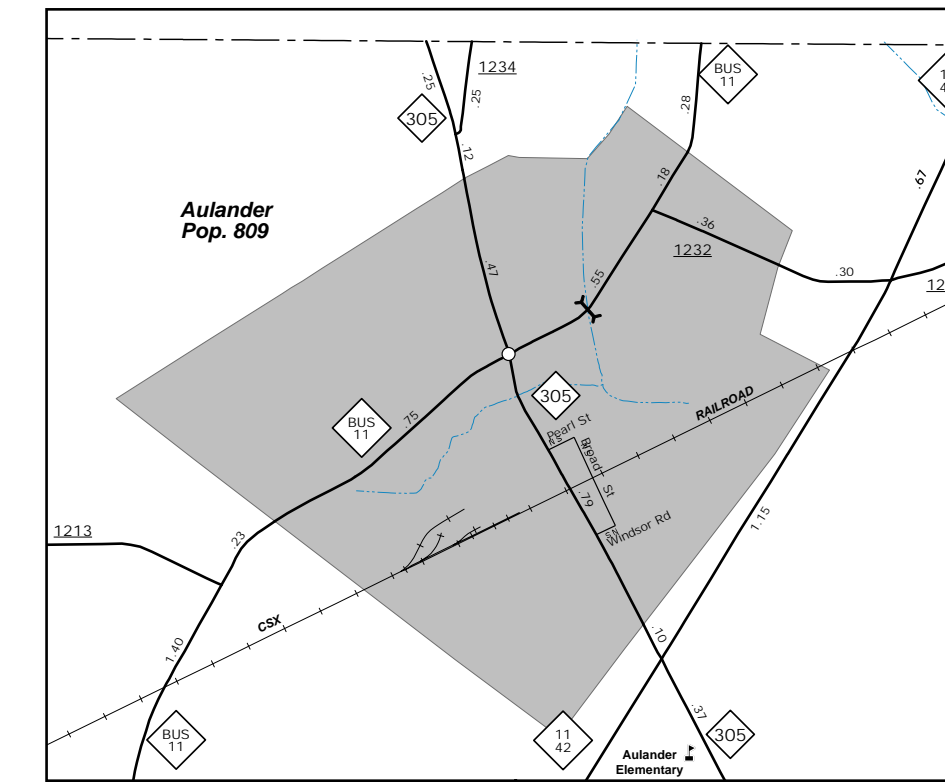
Askewville



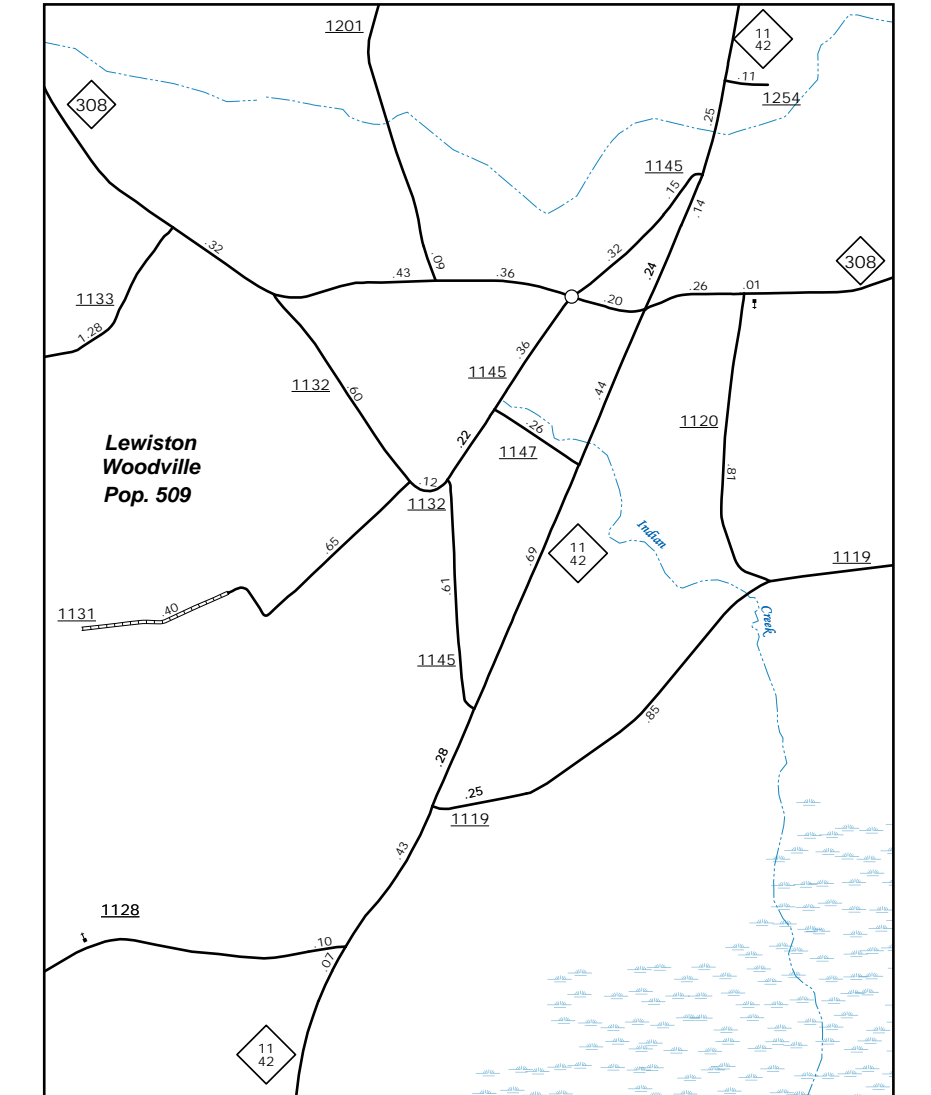
Powellville



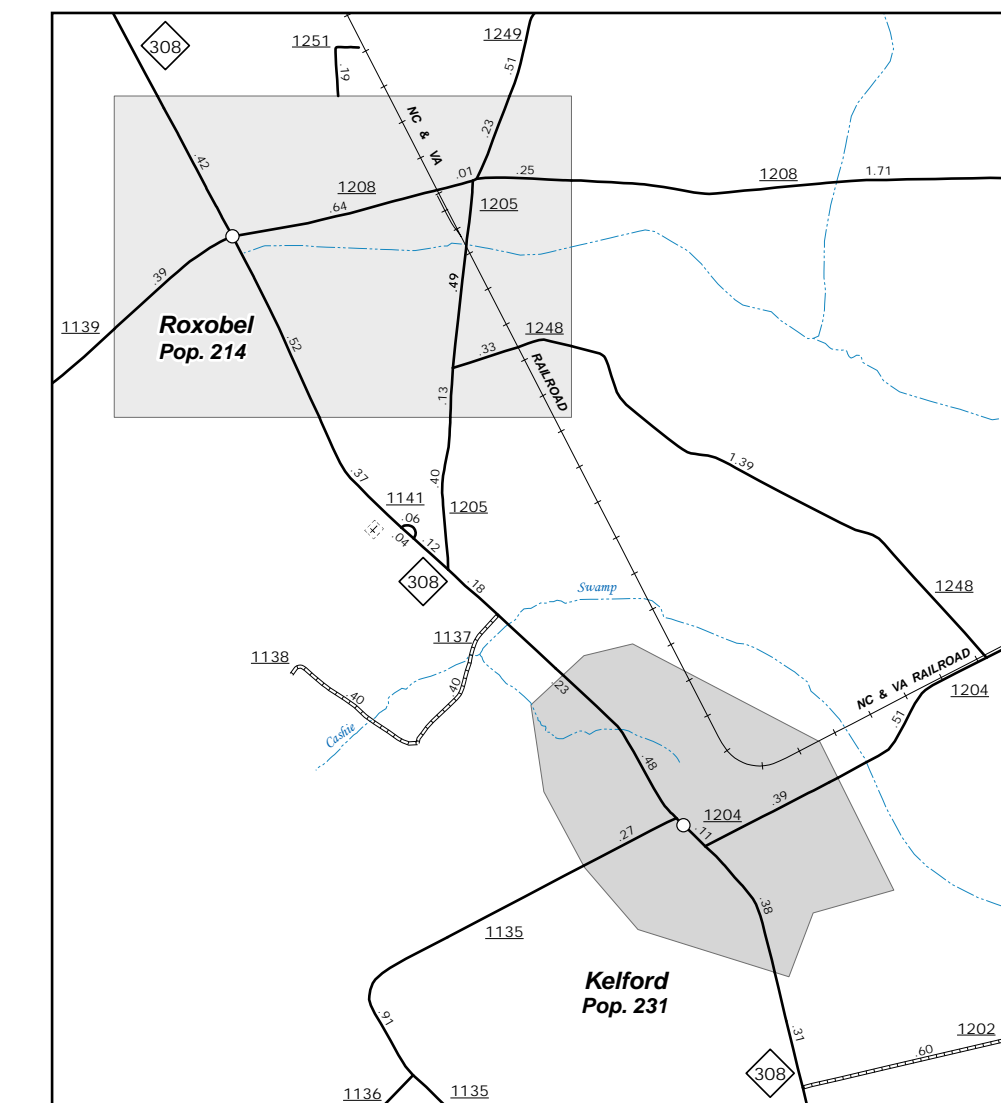
Colrain



Aulander



Lewiston Woodville

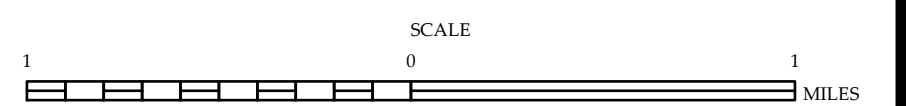


Roxobel and Kelford



**ENLARGED MUNICIPAL AND SUBURBAN AREAS
 BERTIE COUNTY
 NORTH CAROLINA**

PREPARED BY THE
 NORTH CAROLINA DEPARTMENT OF TRANSPORTATION
 OPERATIONS PROGRAM MANAGEMENT UNIT - MAPPING SECTION
 IN COOPERATION WITH THE
 U.S. DEPARTMENT OF TRANSPORTATION
 FEDERAL HIGHWAY ADMINISTRATION



10,000 FOOT GRID BASED ON NORTH CAROLINA PLANE COORDINATE SYSTEM
 LAMBERT CONFORMAL CONIC PROJECTION