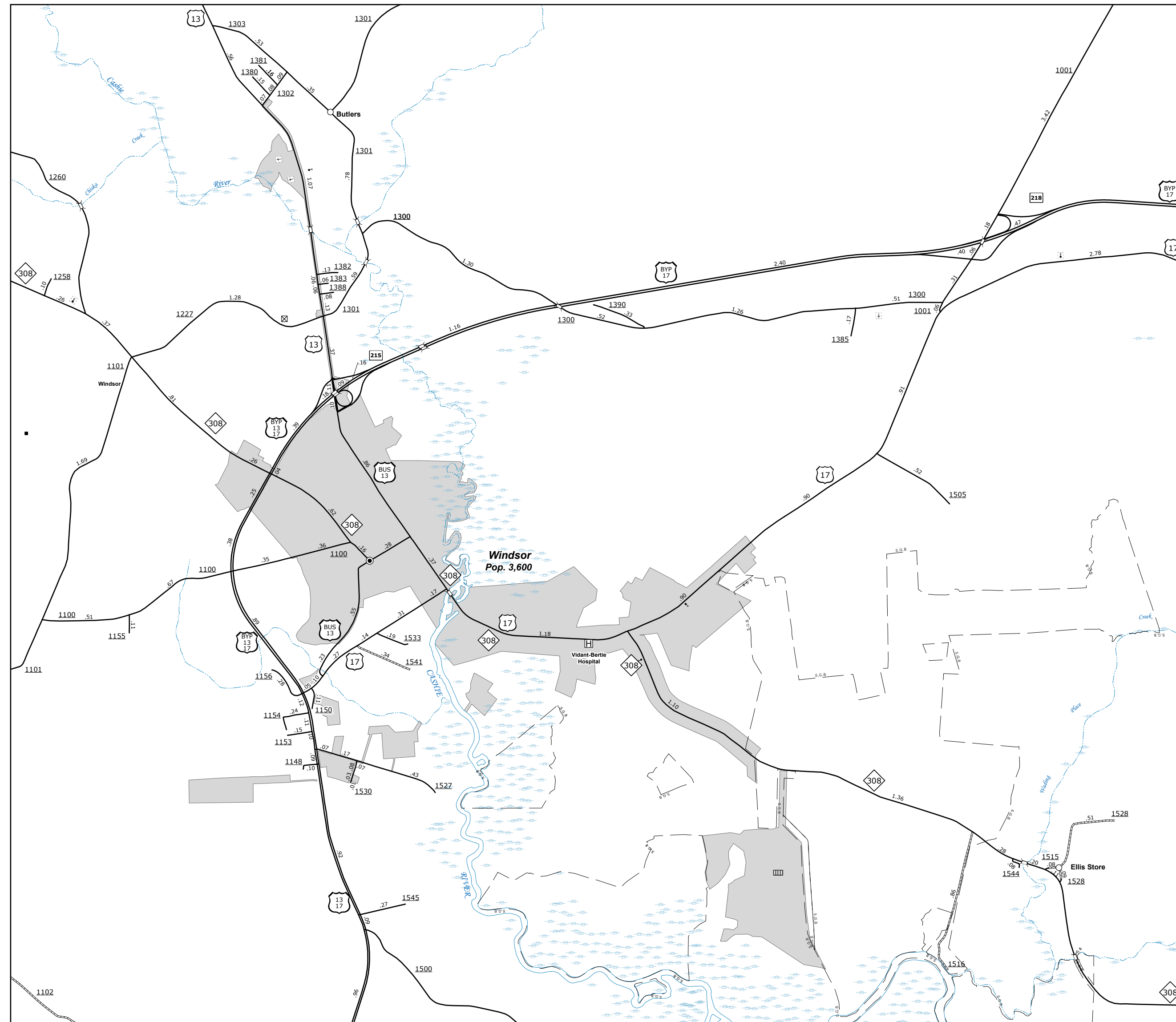
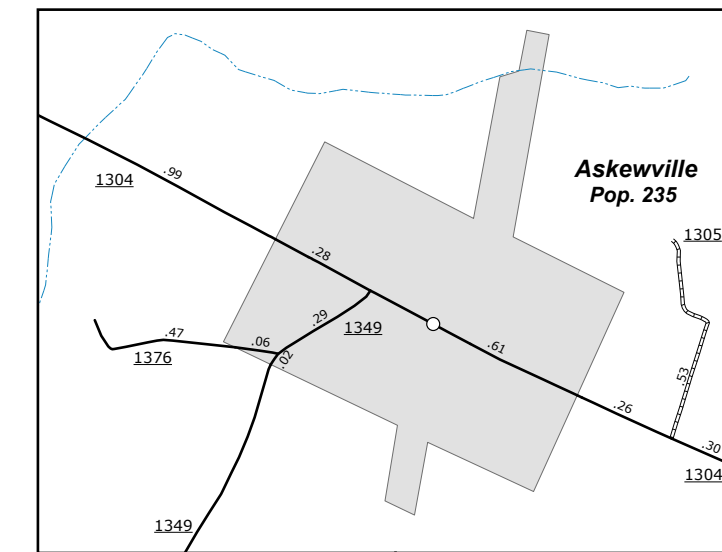


The Mapping Section's goal is to provide the most accurate and current information possible. Map data is compiled from various sources and is not guaranteed to be 100% accurate. The map includes unimproved roads and other important non-system roads.
 The information shown on this map was last updated in September, 2021. For additional information, visit <http://www.ncdot.gov/Travel/Map/MapInfo.aspx> and click on Data Providers or contact us by phone at (919) 855-8480.

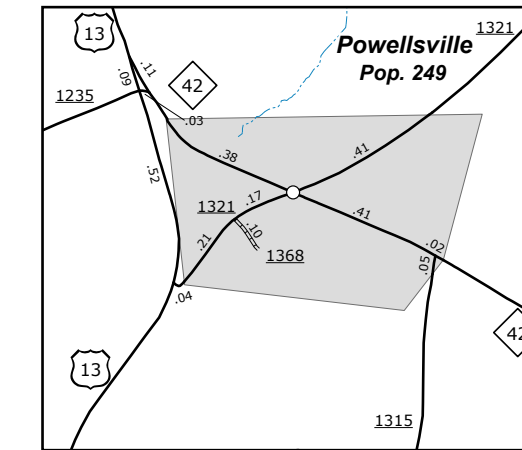
COPIES OF THIS MAP ARE AVAILABLE FOR PURCHASE AT A PUBLIC AT NOMINAL COST.
 ADDRESS: 4809 BERTIE ROAD
 N.C. DEPARTMENT OF TRANSPORTATION
 SPAU - MAPPING SECTION
 RALEIGH, NC 27699



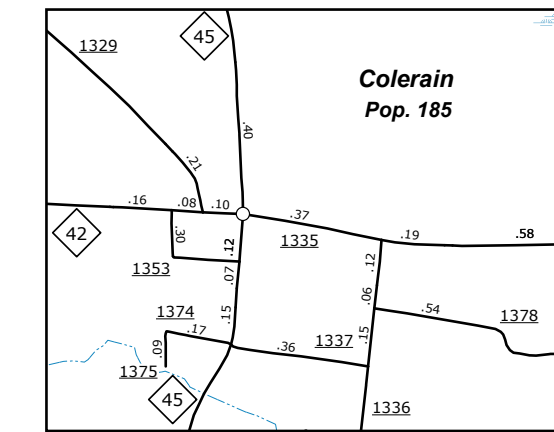
WINDSOR



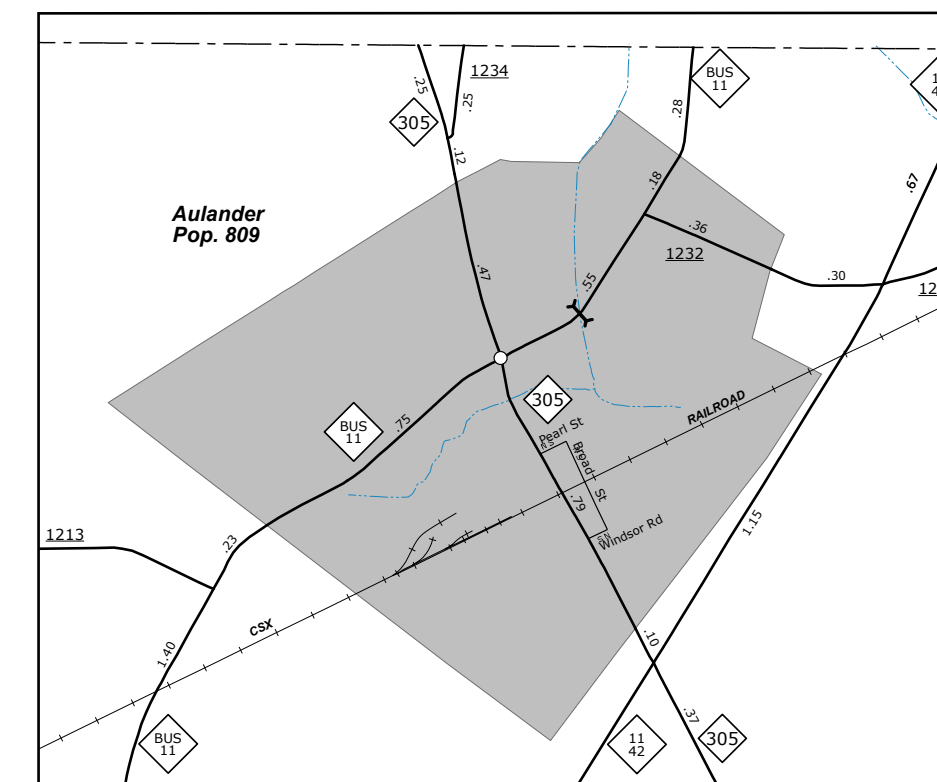
Askeville



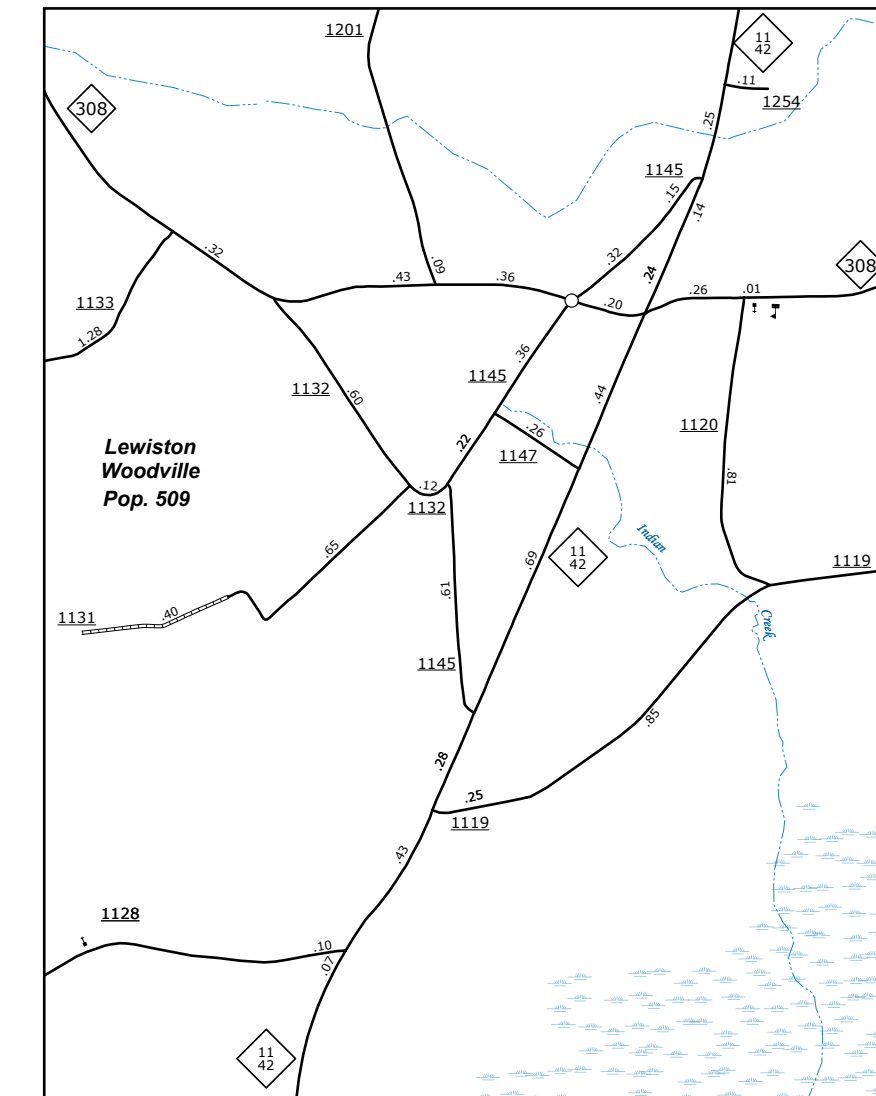
Powellville



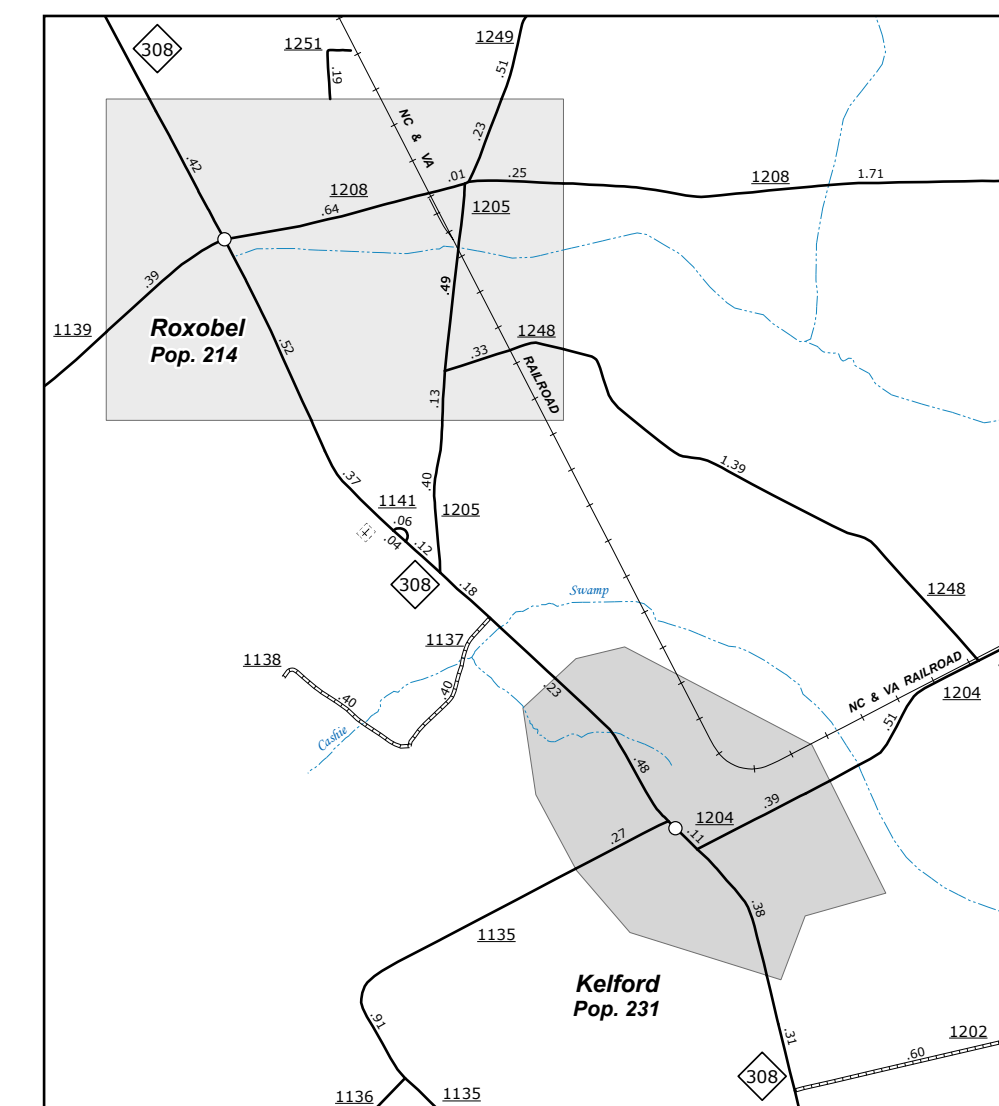
Colrain



Aulander



Lewiston Woodville

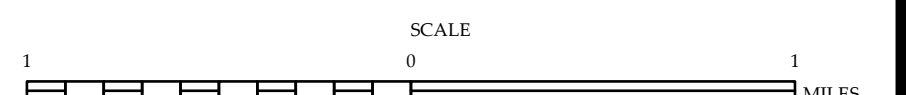


Roxobel and Kelford



ENLARGED MUNICIPAL AND SUBURBAN AREAS
BERTIE COUNTY
NORTH CAROLINA

PREPARED BY THE
 NORTH CAROLINA DEPARTMENT OF TRANSPORTATION
 OPERATIONS PROGRAM MANAGEMENT UNIT - MAPPING SECTION
 IN COOPERATION WITH THE
 U.S. DEPARTMENT OF TRANSPORTATION
 FEDERAL HIGHWAY ADMINISTRATION



10,000 FOOT GRID BASED ON NORTH CAROLINA PLANE COORDINATE SYSTEM
 LAMBERT CONFORMAL CONIC PROJECTION