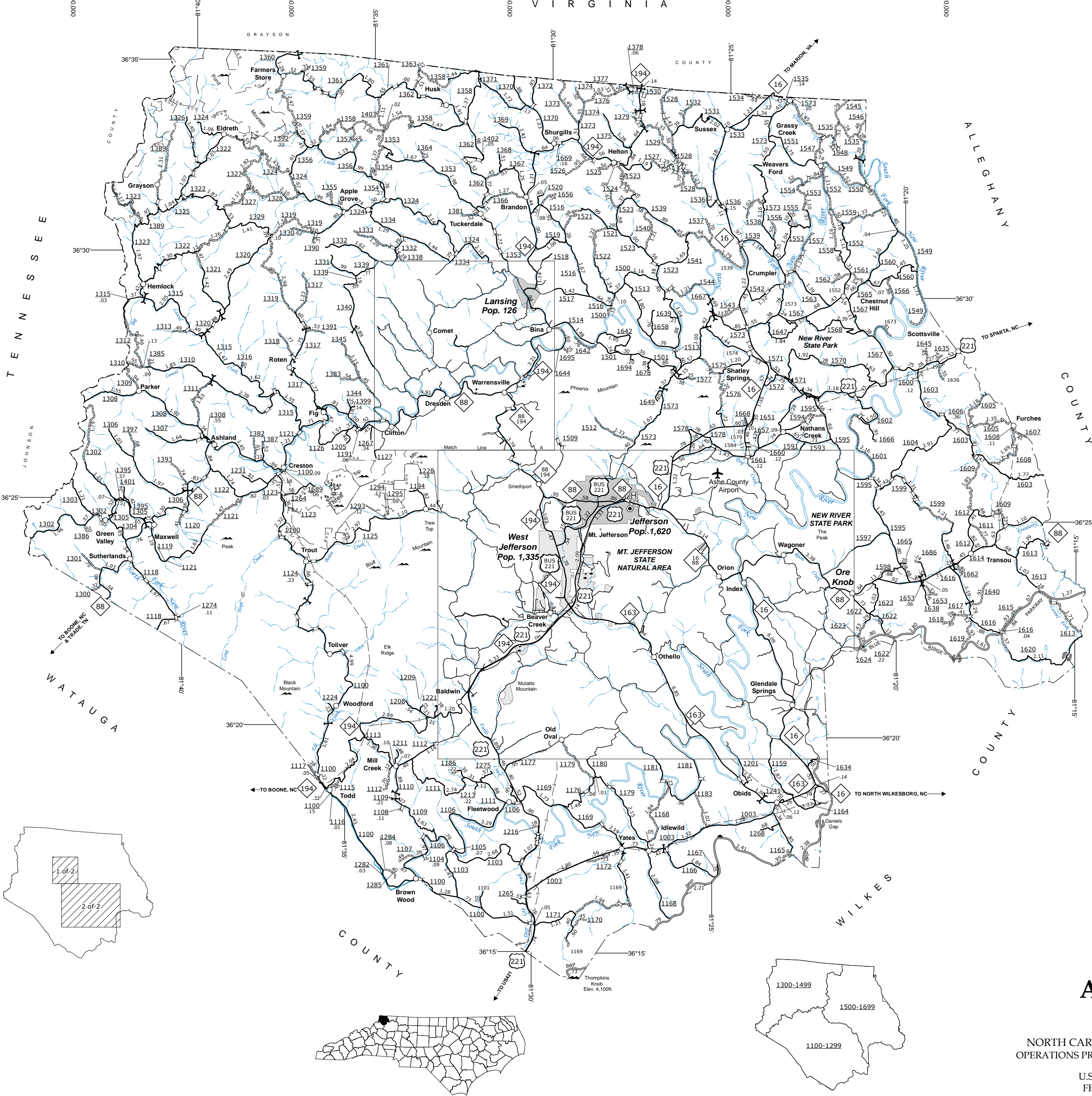


Lansing and Vicinity

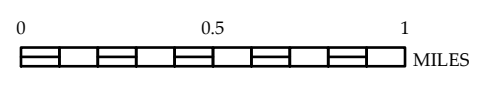
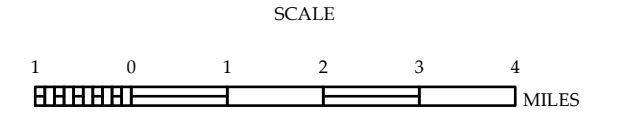


- LEGEND**
- UNPAVED SURFACED ROAD
  - HARD SURFACED ROAD
  - NON-SYSTEM ROADS
  - DIVIDED HIGHWAY W/FRONTAGE ROADS
  - PROJECTED LOCATION
  - BLUE RIDGE PARKWAY
  - INTERSECTION DISTANCE
  - TRAFFIC CIRCLE
  - DETAILED HIGHWAY INTERCHANGE
  - HIGHWAY BRIDGE
  - RAILROAD BRIDGE
  - DRAW SPAN ON BRIDGE
  - PEDESTRIAN BRIDGE
  - PEDESTRIAN WALKWAY
  - PEDESTRIAN UNDERPASS
  - VEHICULAR UNDERPASS
  - FORD
  - TUNNEL
  - CULVERT
  - PIPE
  - INTERSTATE HIGHWAY
  - U.S. NUMBERED HIGHWAY
  - N.C. NUMBERED HIGHWAY
  - U.S. NUMBERED BICYCLE ROUTE
  - N.C. NUMBERED BICYCLE ROUTE
  - INTERSTATE INTERCHANGE NUMBER
  - SECONDARY ROAD NUMBER
  - UTILITY LINES
  - RAILROAD
  - RAILROAD STATION
  - GRADE CROSSING
  - INSET AREA
  - COUNTY LINE
  - FERRY ROUTE
  - CITY LIMIT
  - NATIONAL FOREST BOUNDARY
  - RESERVATION OR PARK BOUNDARY
  - STATE FOREST BOUNDARY
  - STATE GAMELAND BOUNDARY
  - FEDERAL GAMELAND BOUNDARY
  - MILITARY RESERVATION BOUNDARY
  - STATE LINE
  - STATE CAPITAL
  - COMMUNITY, TOWN OR CITY CENTER
  - INSET AREA
  - STATE CAPITAL
  - SCHOOL
  - COLLEGE OR UNIVERSITY
  - HOSPITAL
  - COAST GUARD STATION
  - CHURCH
  - CHURCH WITH CEMETERY
  - CEMETERY
  - PARKING STATION
  - CORRECTION OR PENAL INSTITUTION
  - QUARRY
  - MINE OR PIT
  - HIGHWAY GARAGE OR MAINT. YARD
  - HIGHWAY DIV. OR DIST. OFFICE
  - MILITARY POST
  - WILDLIFE REFUGE
  - WEIGH STATION
  - FAIRGROUNDS
  - HISTORICAL SITE
  - POINTS OF INTEREST
  - STATE FOREST
  - LIGHTHOUSE
  - MOUNTAIN SUMMIT
  - OVERLOOK
  - GEODETIC MARKER
  - REST AREA
  - VISITOR CTR./REST AREA
  - WELCOME CTR./REST AREA
  - AIRPORT
  - MILITARY AIRPORT
  - HELIPORT



**ASHE COUNTY  
NORTH CAROLINA**

PREPARED BY THE  
NORTH CAROLINA DEPARTMENT OF TRANSPORTATION  
OPERATIONS PROGRAM MANAGEMENT UNIT - MAPPING SECTION  
IN COOPERATION WITH THE  
U.S. DEPARTMENT OF TRANSPORTATION  
FEDERAL HIGHWAY ADMINISTRATION



SCALE FOR ENLARGEMENTS

10,000 FOOT GRID BASED ON NORTH CAROLINA PLANE COORDINATE SYSTEM  
LAMBERT CONFORMAL CONIC PROJECTION

The Mapping Section's goal is to provide the most accurate and current information possible. Map data is compiled from various sources, including aerial photography, ground surveys, and other reliable sources. The information is subject to change without notice. For more information, visit our website at [www.ncdot.gov](http://www.ncdot.gov) or call 1-800-368-6888.

COPIES OF THIS MAP ARE AVAILABLE FROM THE NORTH CAROLINA DEPARTMENT OF TRANSPORTATION, MAPPING SECTION, 4609 BERTHLETT ROAD, RALEIGH, NC 27617.