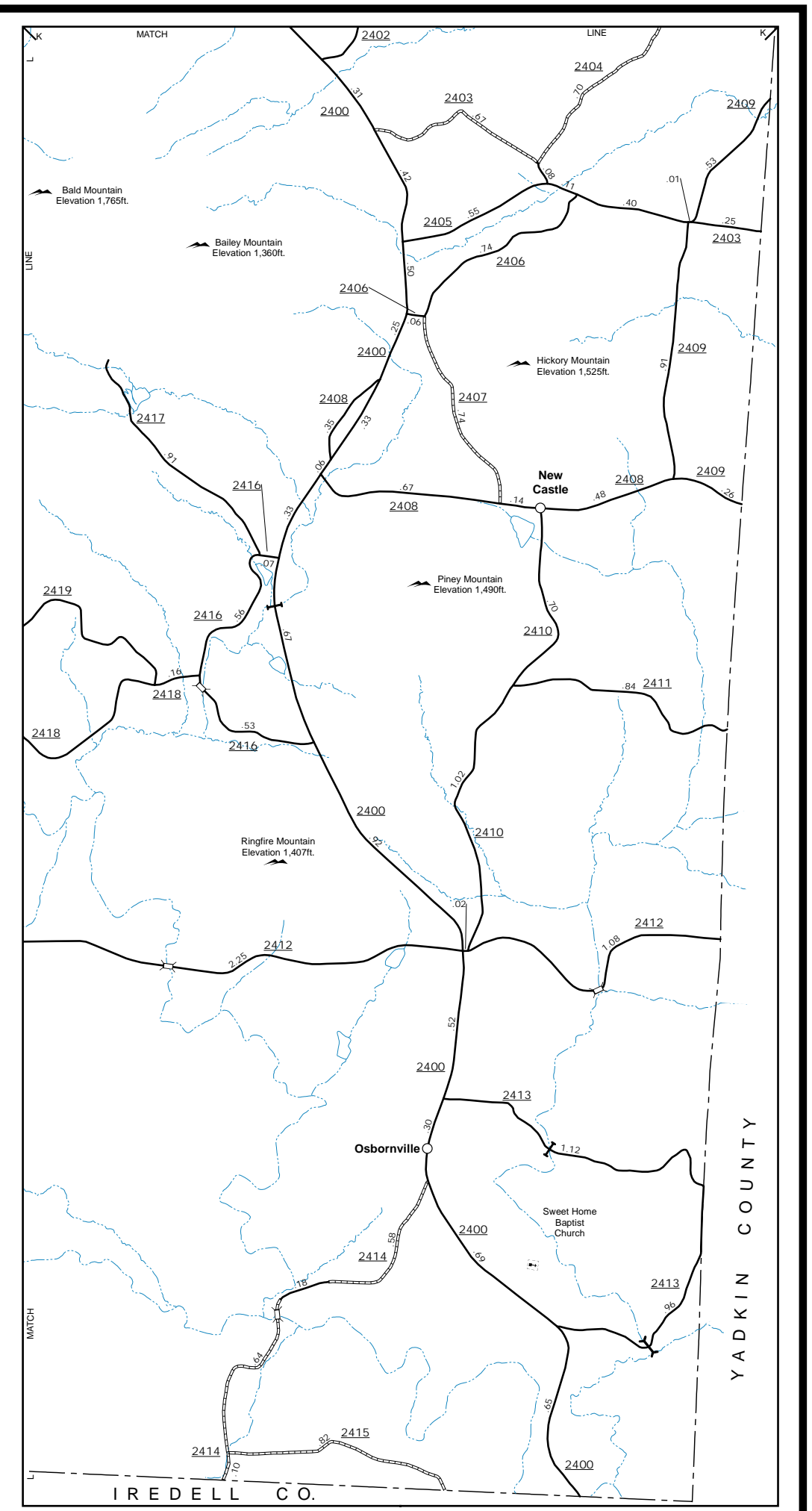
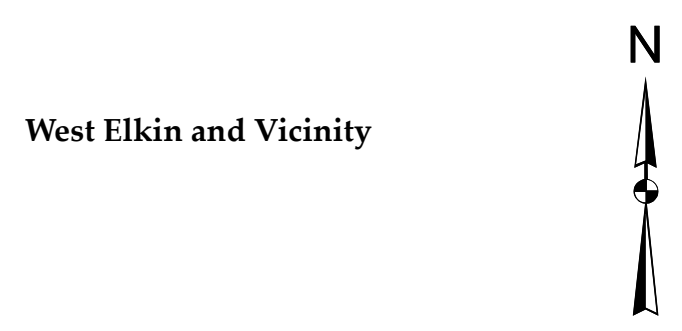


The Mapping Section's goal is to provide the most accurate and current information possible. Map data is compiled from various sources including aerial photography, ground surveys, and other data. While every effort is made to ensure the accuracy of the information, the user should be aware that the map is not a substitute for a field survey. For additional information, visit www.ncdot.gov/MSAU/MSAUMappingSection and click on Data Providers or contact us by phone at (919) 835-8460.

COPIES OF THIS MAP ARE AVAILABLE FROM THE PUBLIC AT NOMINAL COST. ADDRESS: NORTH CAROLINA DEPARTMENT OF TRANSPORTATION, MS-AU - MAPPING SECTION, 4609 BERTHOLD ROAD, RALEIGH, NC 27606

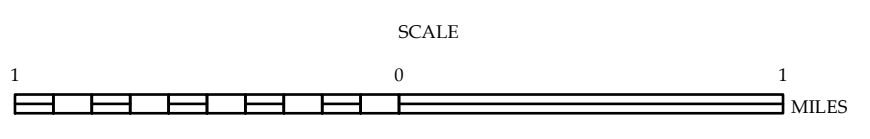


New Castle & Osbornville



ENLARGED MUNICIPAL AND SUBURBAN AREAS
WILKES COUNTY
 NORTH CAROLINA

PREPARED BY THE
 NORTH CAROLINA DEPARTMENT OF TRANSPORTATION
 OPERATIONS PROGRAM MANAGEMENT UNIT - MAPPING SECTION
 IN COOPERATION WITH THE
 U.S. DEPARTMENT OF TRANSPORTATION
 FEDERAL HIGHWAY ADMINISTRATION



10,000 FOOT GRID BASED ON NORTH CAROLINA PLANE COORDINATE SYSTEM
 LAMBERT CONFORMAL CONIC PROJECTION