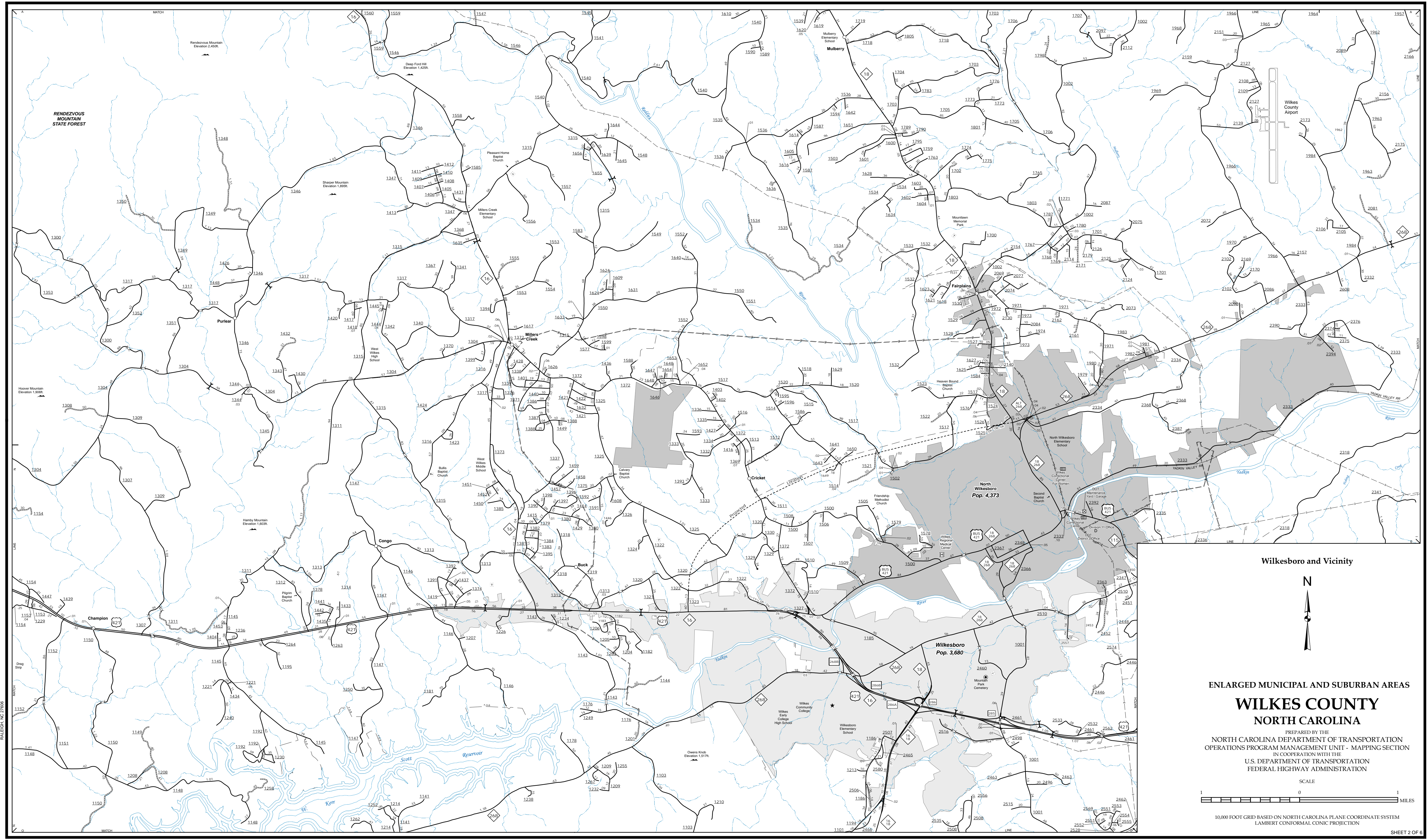


The Mapping Section's goal is to provide the most accurate and current information possible. Map data is compiled from various sources, including aerial photography, ground surveys, and other data. The map includes state and local government boundaries and other information. For more information, visit www.ncdot.gov/infrastructure/mapping and click on Data Providers or contact us by phone at (919) 855-8480.

COPIES OF THIS MAP ARE AVAILABLE FOR PURCHASE AT A PUBLIC NOMINAL COST. ADDRESS: NORTH CAROLINA DEPARTMENT OF TRANSPORTATION, MSAU-MAPPING SECTION, 4809 BERRY LANE, RALEIGH, NC 27606

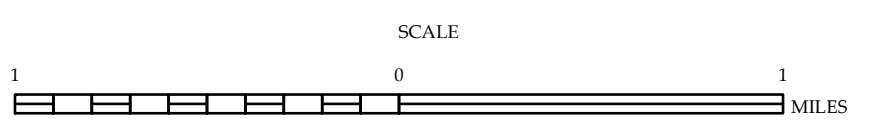


Wilkesboro and Vicinity



ENLARGED MUNICIPAL AND SUBURBAN AREAS WILKES COUNTY NORTH CAROLINA

PREPARED BY THE
NORTH CAROLINA DEPARTMENT OF TRANSPORTATION
OPERATIONS PROGRAM MANAGEMENT UNIT - MAPPING SECTION
IN COOPERATION WITH THE
U.S. DEPARTMENT OF TRANSPORTATION
FEDERAL HIGHWAY ADMINISTRATION



10,000 FOOT GRID BASED ON NORTH CAROLINA PLANE COORDINATE SYSTEM
LAMBERT CONFORMAL CONIC PROJECTION