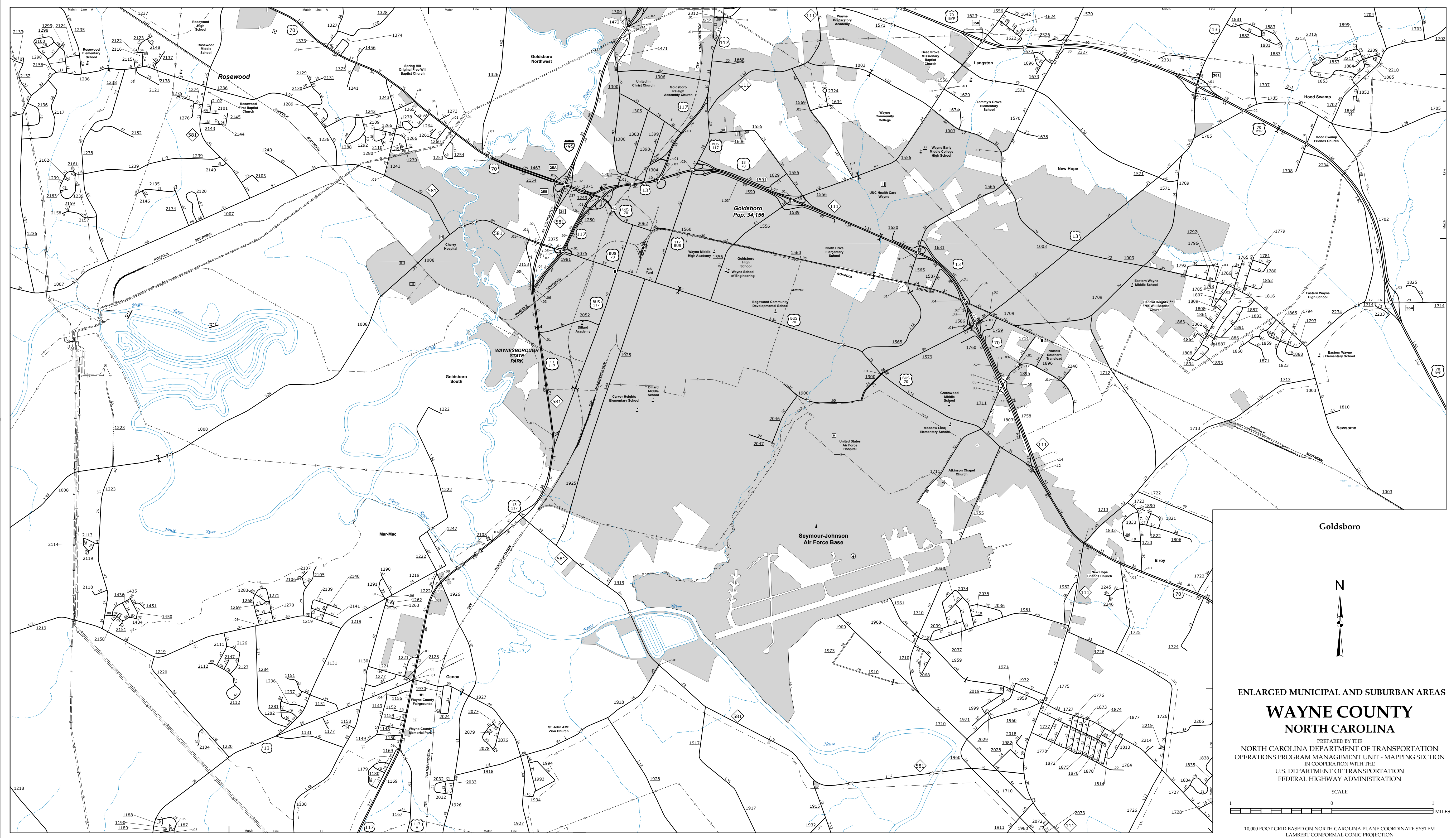


COPIES OF THIS MAP ARE AVAILABLE FROM THE PUBLIC INFORMATION COST ADDRESS: N.C. DEPARTMENT OF TRANSPORTATION, MSAU, MAPPING SECTION, 4809 BERRY, D.D., RALEIGH, NC 27608

The Mapping Section's goal is to provide the most accurate and current information possible. Map data is compiled from various sources and is subject to change. The information on this map is for general information only and is not intended to be used for legal purposes. The information on this map is not a warranty, representation, or agreement by the Department of Transportation. For additional information, visit <http://www.ncdot.gov/infocenter/mapping/> and click on Data Provider or contact us by phone at (919) 835-8480.



Goldsboro

N

ENLARGED MUNICIPAL AND SUBURBAN AREAS
WAYNE COUNTY
NORTH CAROLINA

PREPARED BY THE
NORTH CAROLINA DEPARTMENT OF TRANSPORTATION
OPERATIONS PROGRAM MANAGEMENT UNIT - MAPPING SECTION
IN COOPERATION WITH THE
U.S. DEPARTMENT OF TRANSPORTATION
FEDERAL HIGHWAY ADMINISTRATION

SCALE
0 1 MILES

10,000 FOOT GRID BASED ON NORTH CAROLINA PLANE COORDINATE SYSTEM
LAMBERT CONFORMAL CONIC PROJECTION

SHEET 2 OF 3